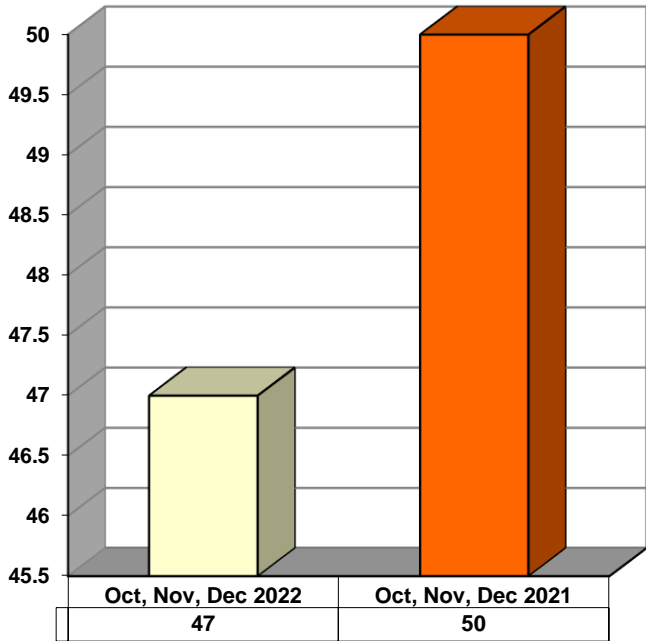
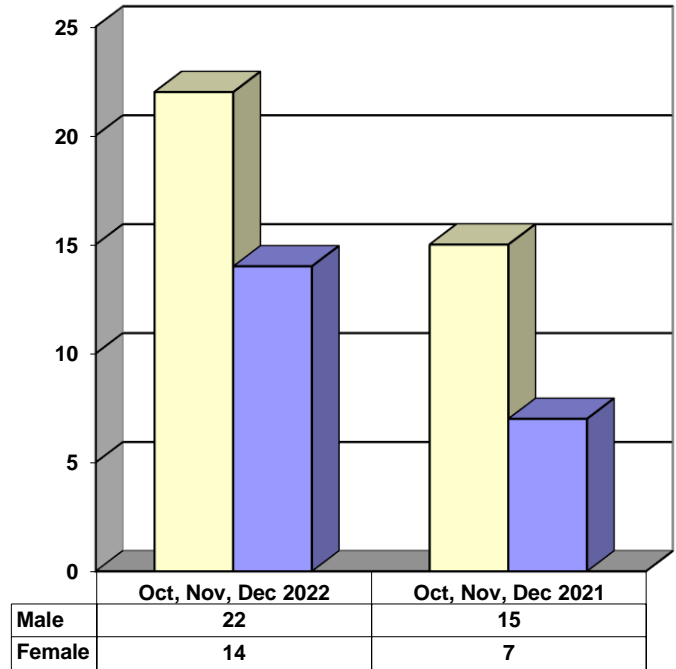


JUVENILE SUPERVISION INFORMATION
MONTHS OF OCTOBER, NOVEMBER, AND DECEMBER 2022
 (Compared to Prior Year)

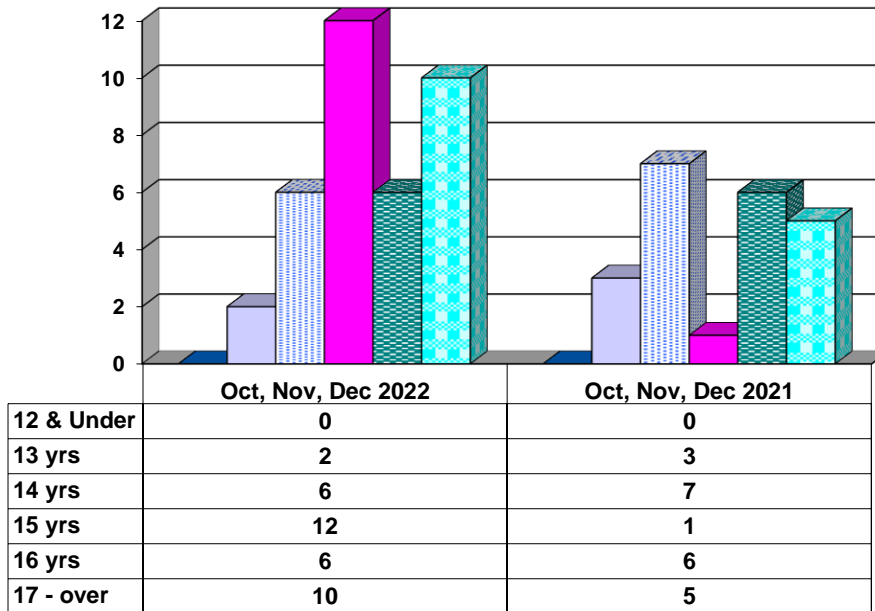
Juvenile Delinquency Petitions Filed



Gender Demographics for Juvenile Admissions

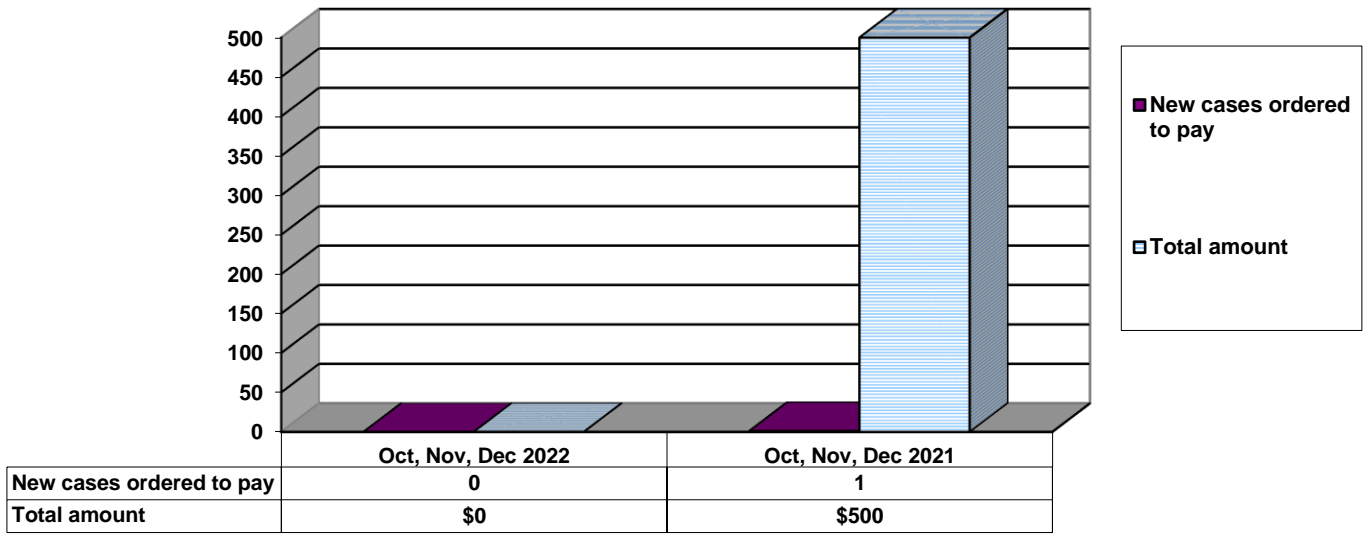


Age Demographics for Juvenile Admissions

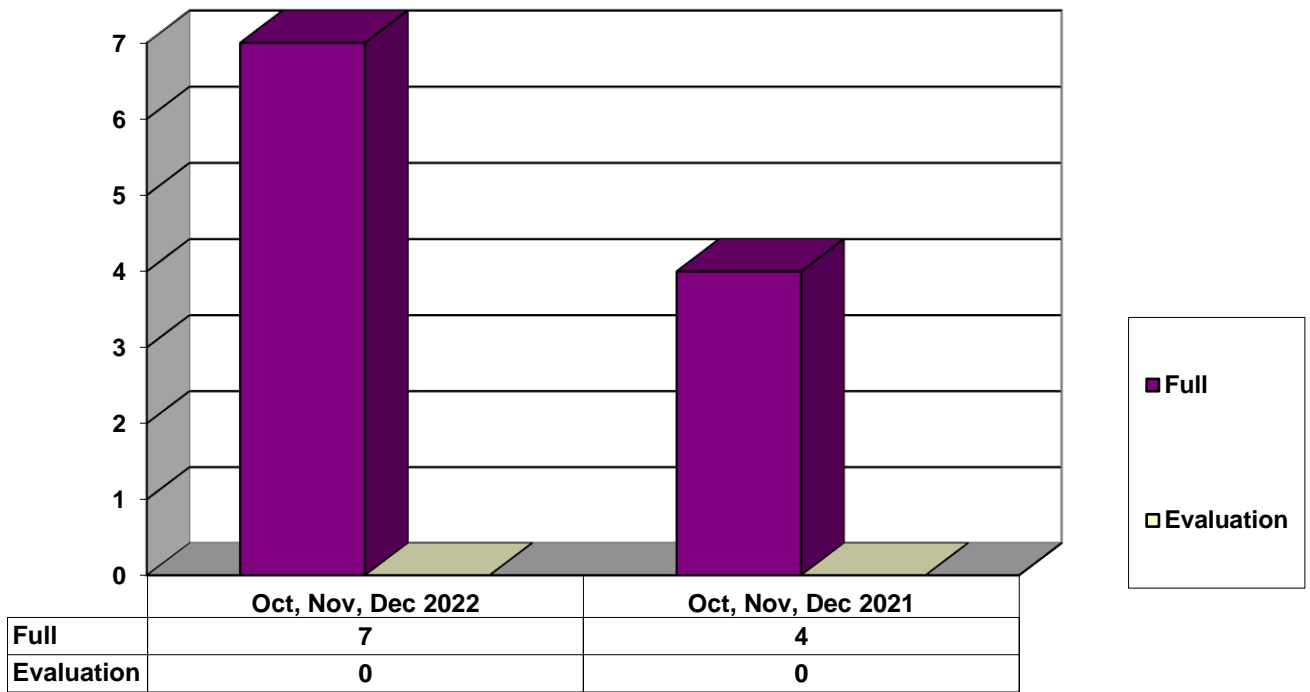


12 & Under
 13 yrs
 14 yrs
 15 yrs
 16 yrs
 17 - over

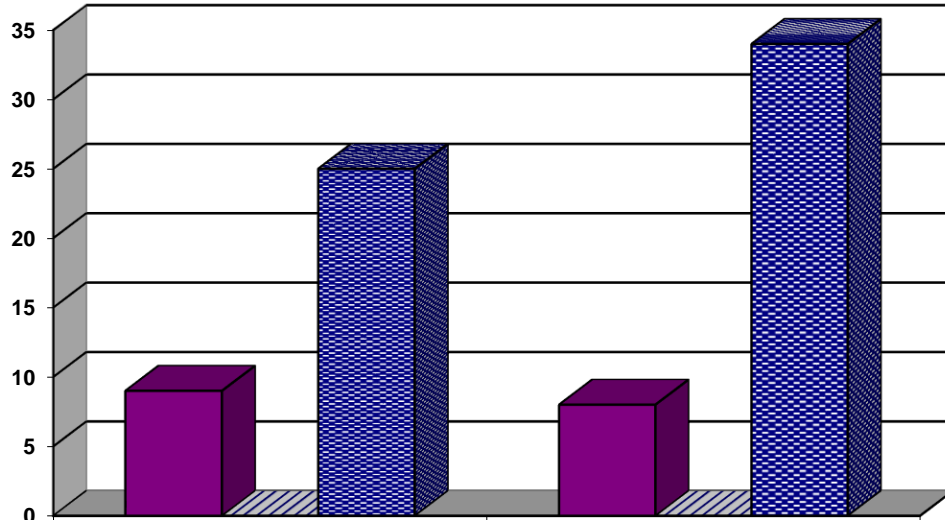
Restitution Ordered in New Juvenile Cases



Commitments to Illinois Department of Juvenile Justice



Investigations Completed by Juvenile Division



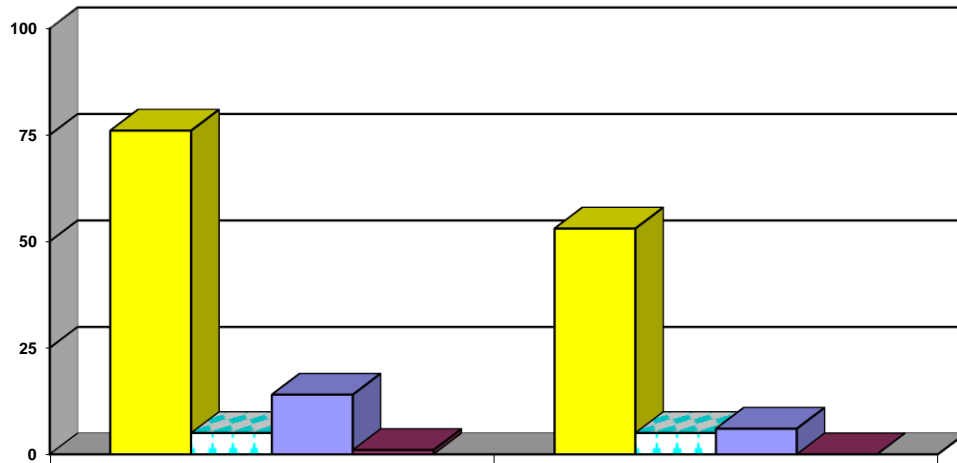
	Oct, Nov, Dec 2022	Oct, Nov, Dec 2021
Social Histories	9	8
Supplemental Social History	0	0
Remission/Review	25	34

■ Social Histories

▨ Supplemental Social History

■ Remission/Review

Juvenile Caseload at End of Reporting Periods



	December 2022	December 2021
Probation	76	53
Continued under Supervision	5	5
Informal	14	6
Other	1	0

■ Probation

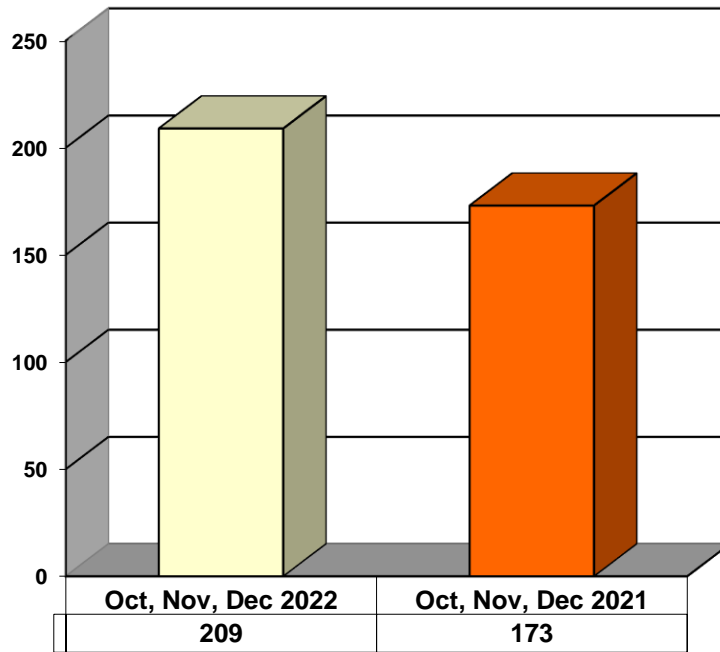
▨ Continued under Supervision

■ Informal

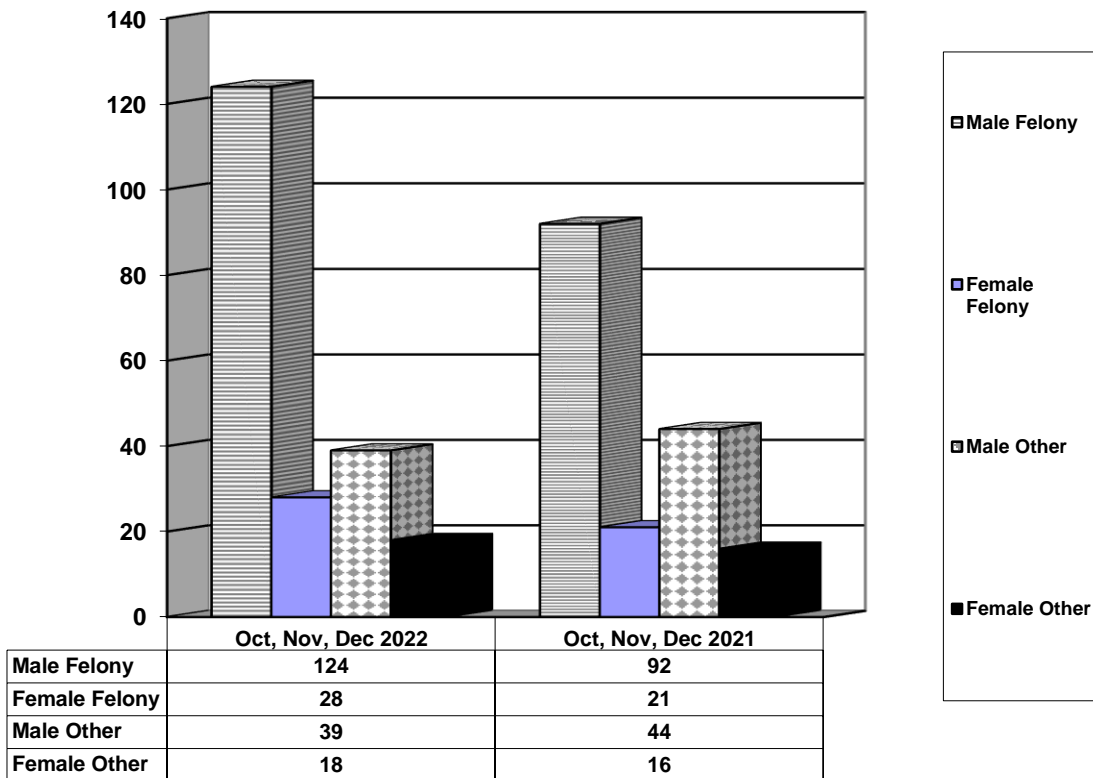
■ Other

**ADULT SUPERVISION INFORMATION
MONTHS OF OCTOBER, NOVEMBER, AND DECEMBER 2022
(Compared to Prior Year)**

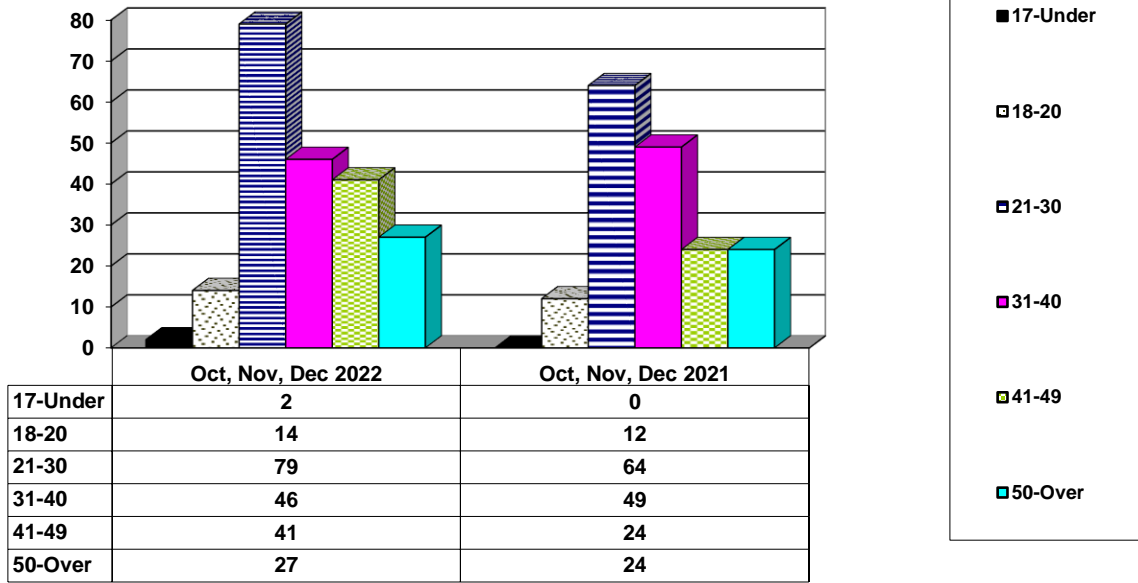
Adult Intakes Completed



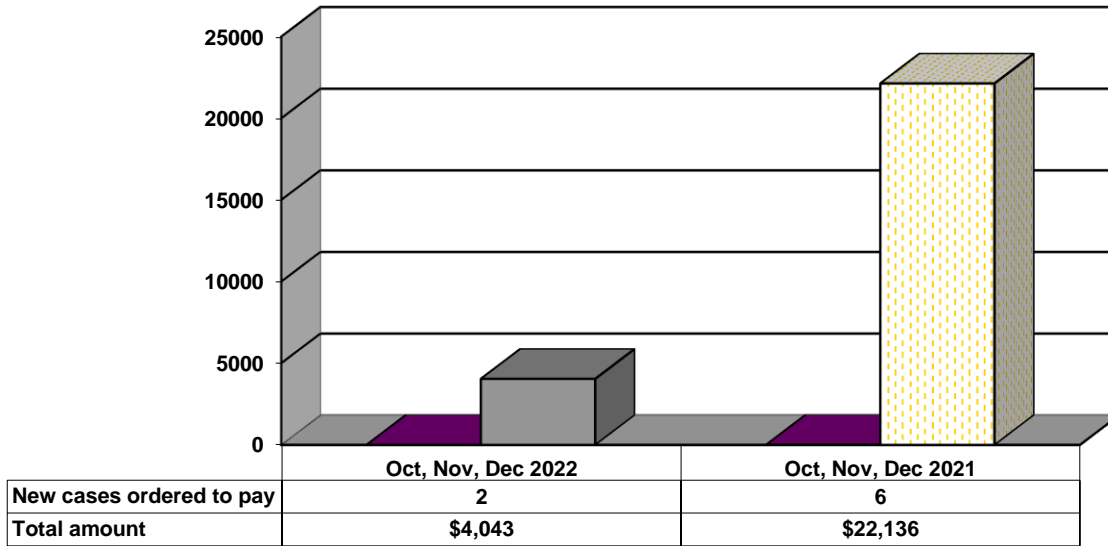
Gender Demographics for Adult Intakes



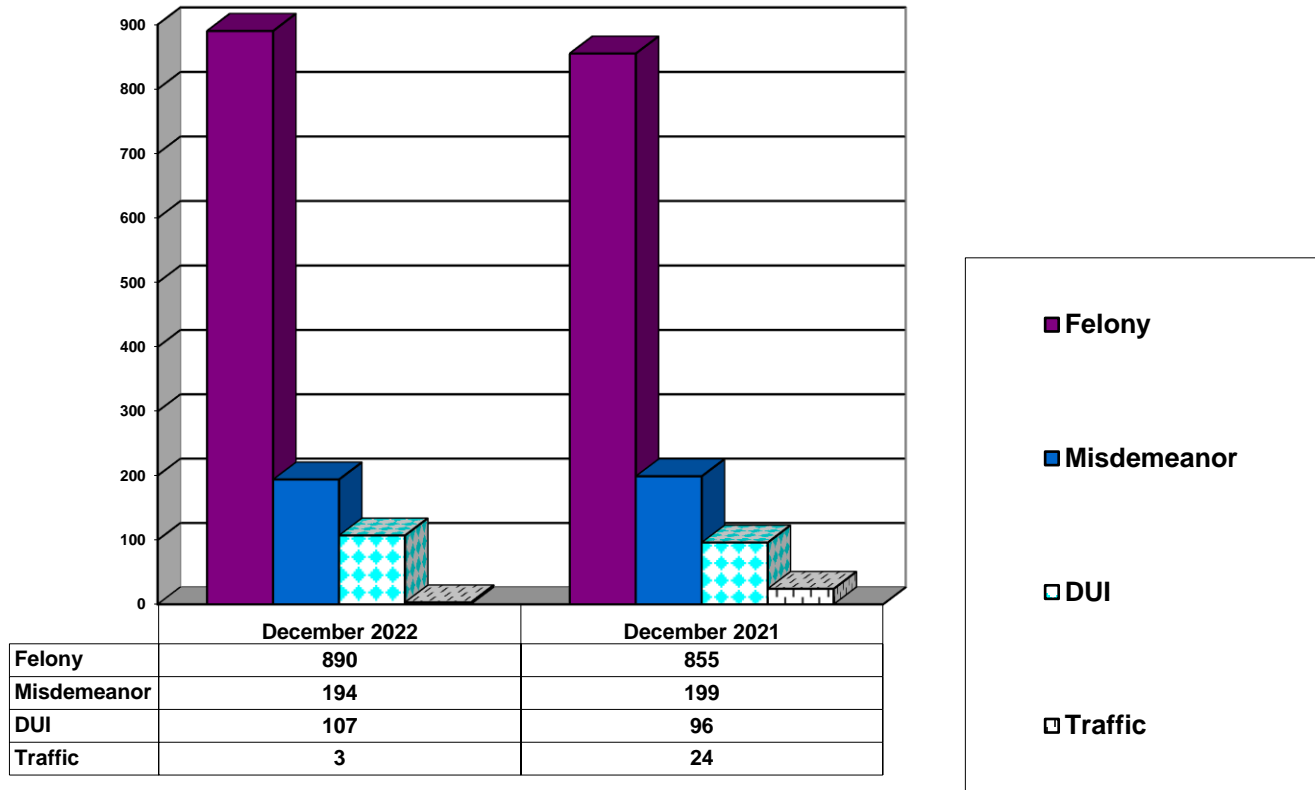
Age Demographics for Adult Intakes



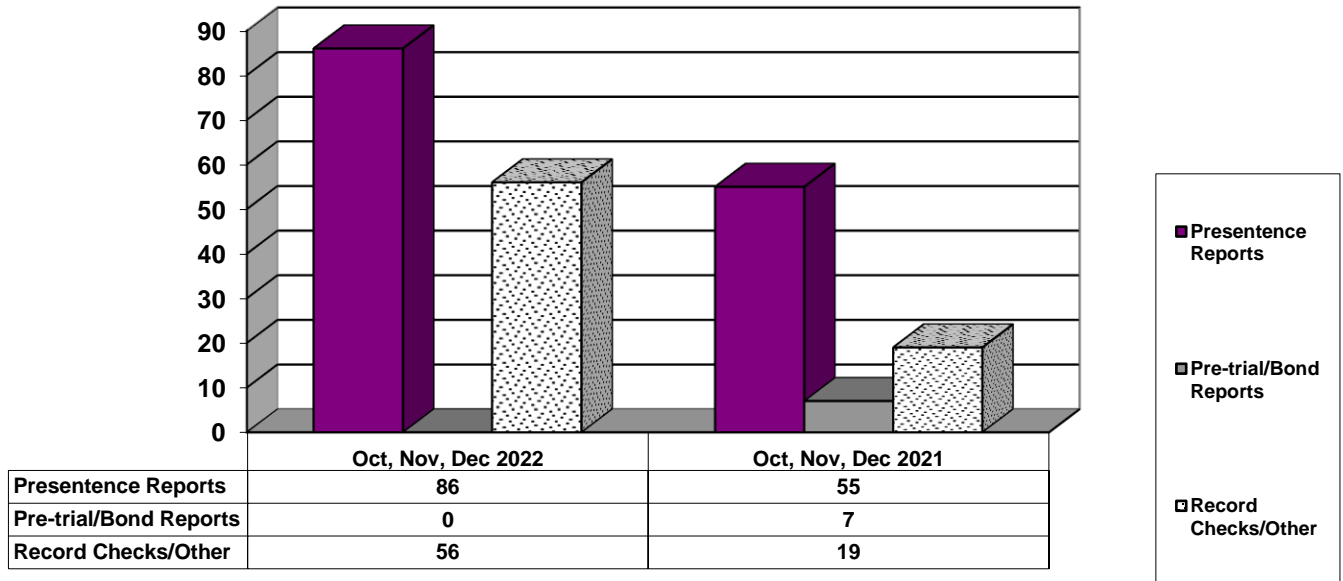
Restitution Ordered in New Adult Cases



Breakdown of Adult Caseload at End of Reporting Periods



Adult Investigations Completed



Commitments to Illinois Department of Corrections

