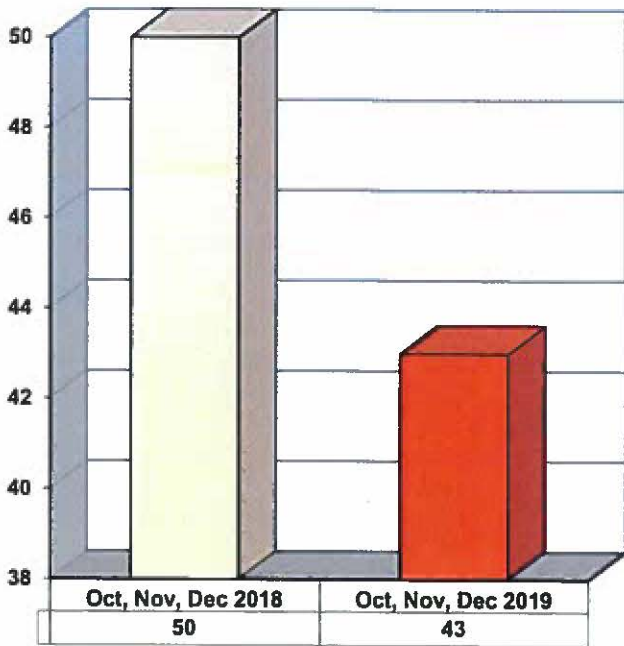
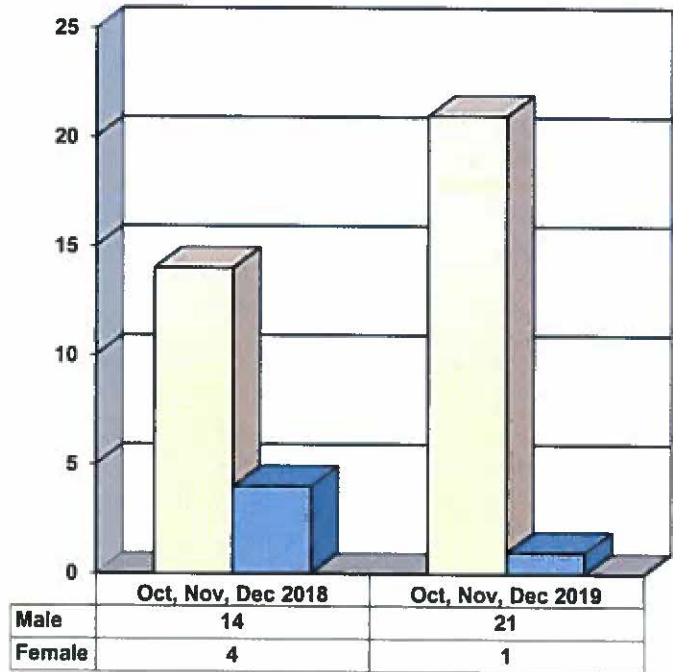


**JUVENILE SUPERVISION INFORMATION  
MONTHS OF OCTOBER, NOVEMBER AND DECEMBER 2019  
(Compared to Prior Year)**

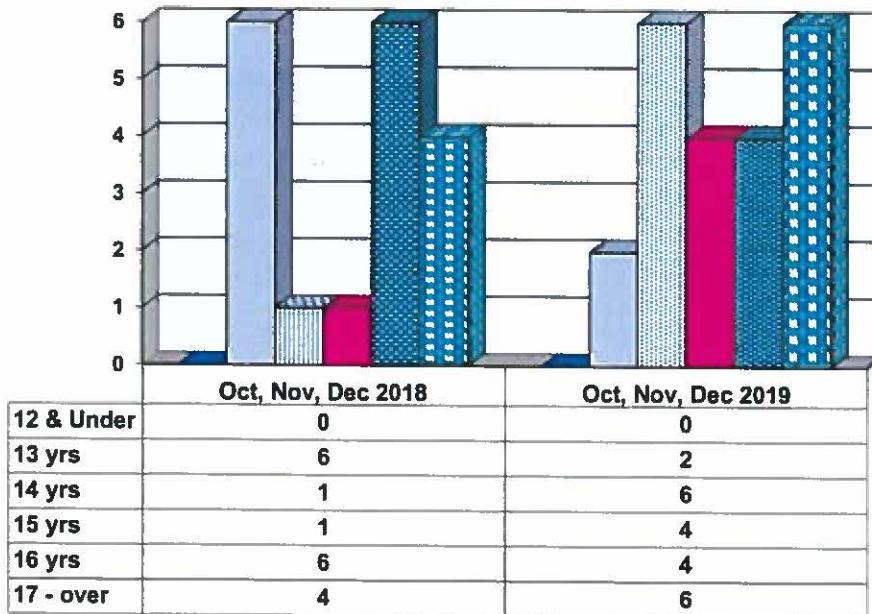
**Juvenile Delinquency Petitions Filed**



**Gender Demographics for Juvenile Admissions**

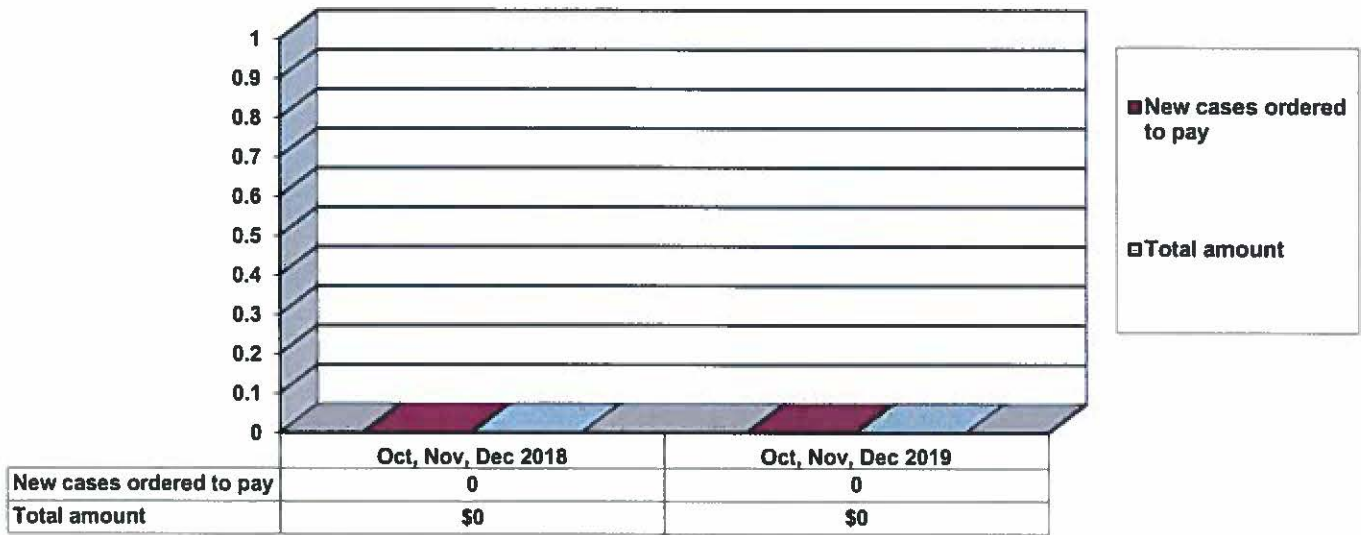


**Age Demographics for Juvenile Admissions**

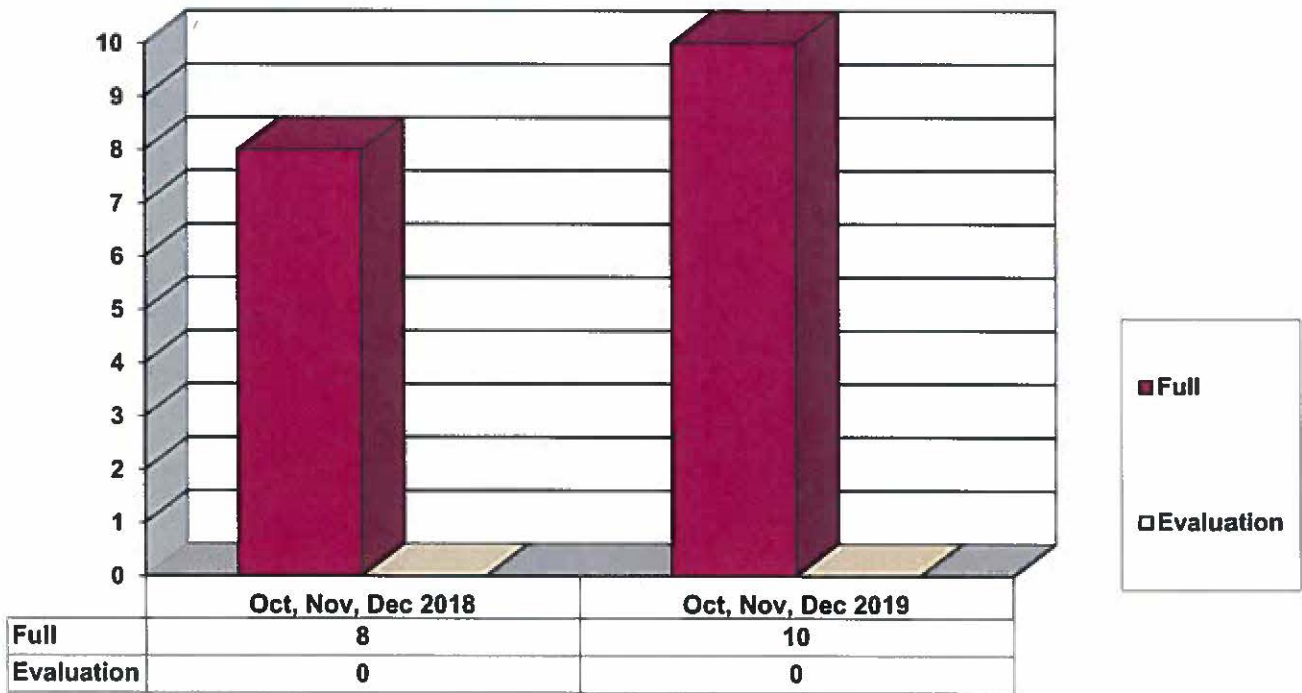


12 & Under
  13 yrs
  14 yrs
  15 yrs
  16 yrs
  17 - over

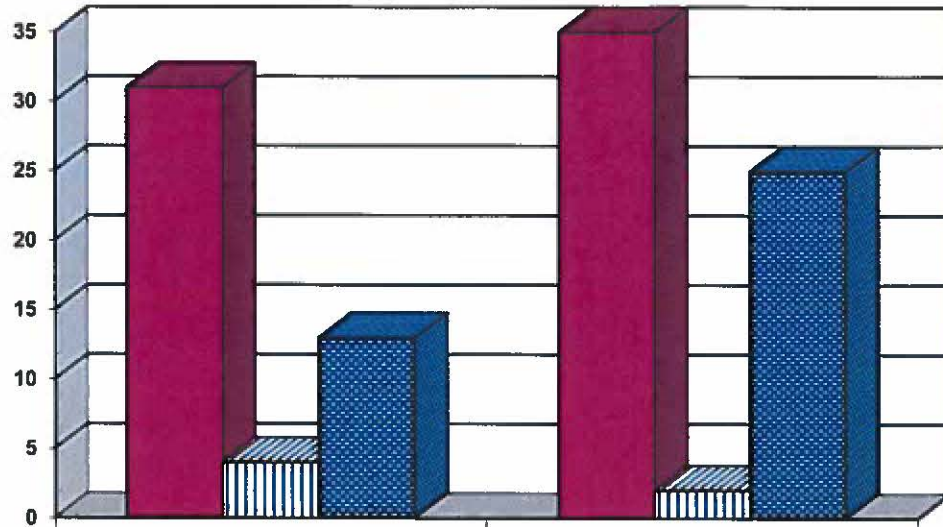
### Restitution Ordered in New Juvenile Cases



### Commitments to Illinois Department of Juvenile Justice



### Investigations Completed by Juvenile Division



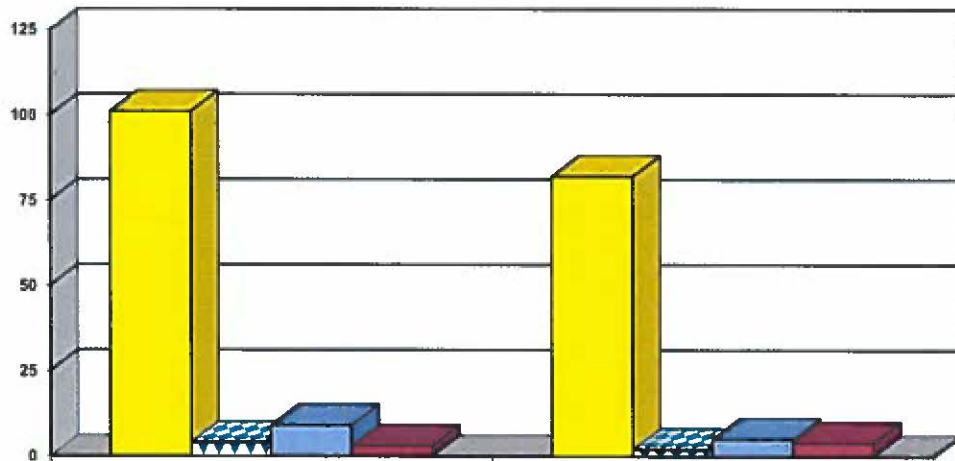
	Oct, Nov, Dec 2018	Oct, Nov, Dec 2019
Social Histories	31	35
Supplemental Social History	4	2
Remission/Review	13	25

■ Social Histories

■ Supplemental Social History

■ Remission/Review

### Juvenile Caseload at End of Reporting Periods



	December 2018	December 2019
Probation	101	82
Continued under Supervision	4	2
Informal	9	5
Other	3	4

■ Probation

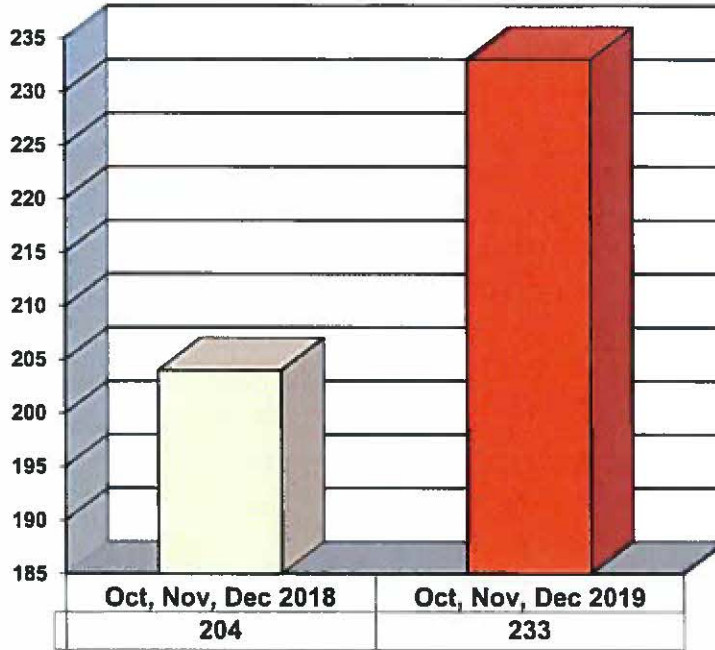
■ Continued under Supervision

■ Informal

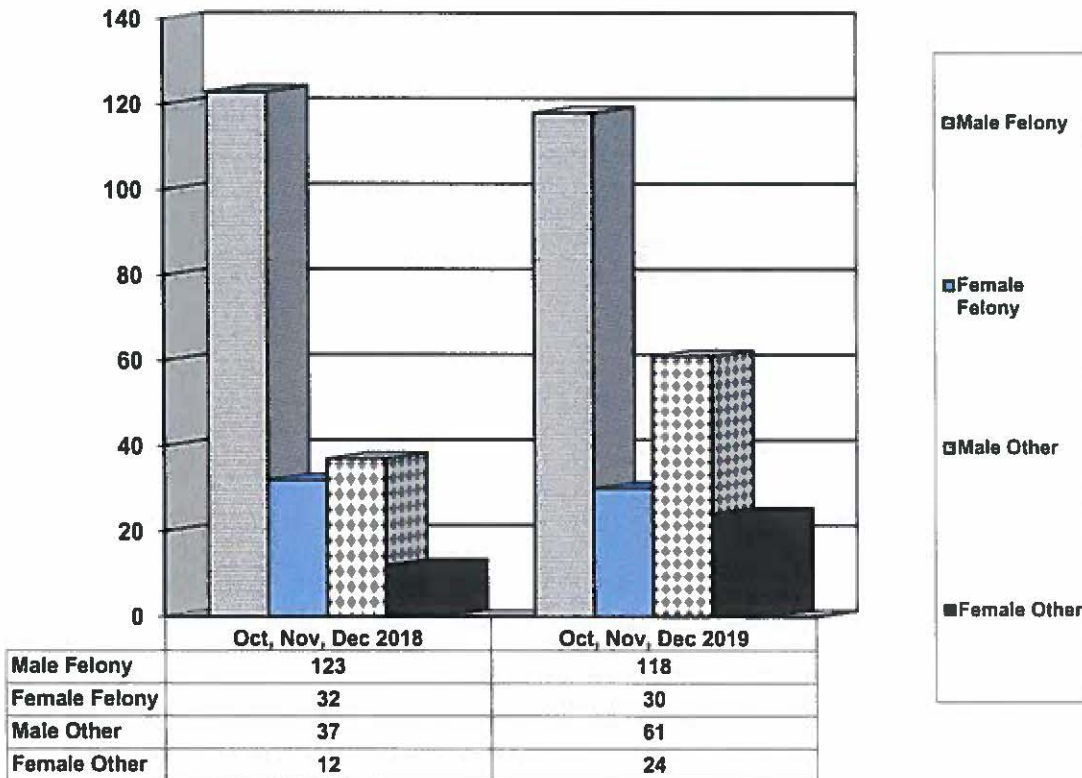
■ Other

**ADULT SUPERVISION INFORMATION  
MONTHS OF OCTOBER, NOVEMBER AND DECEMBER 2019  
(Compared to Prior Year)**

**Adult Intakes Completed**

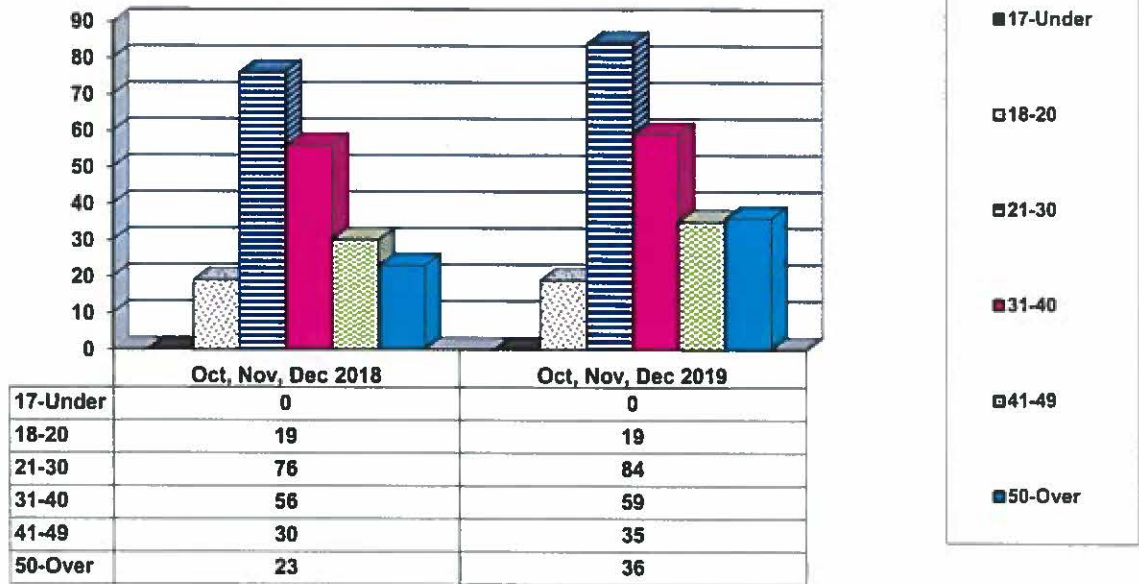


**Gender Demographics for Adult Intakes**

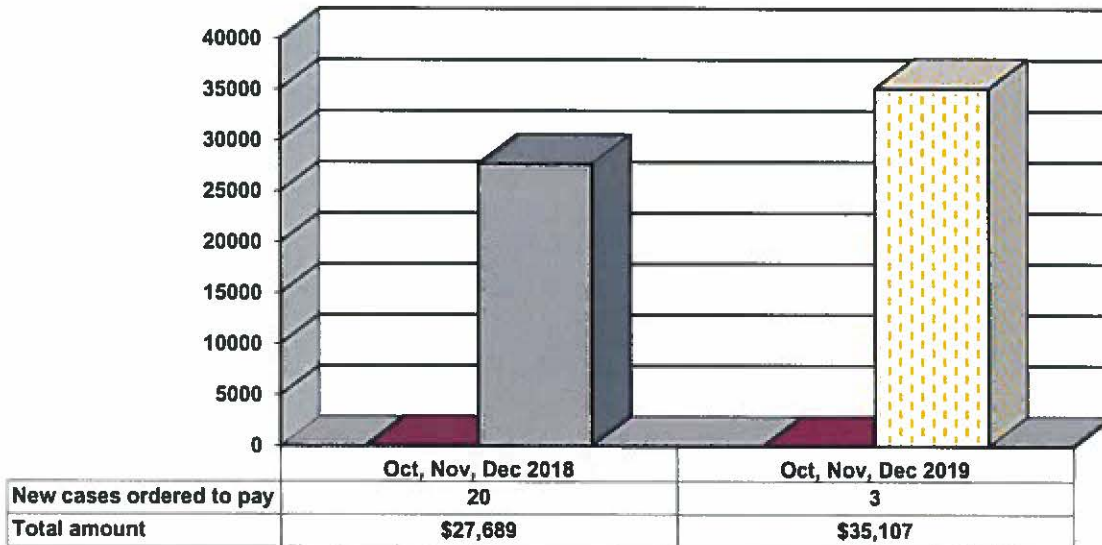




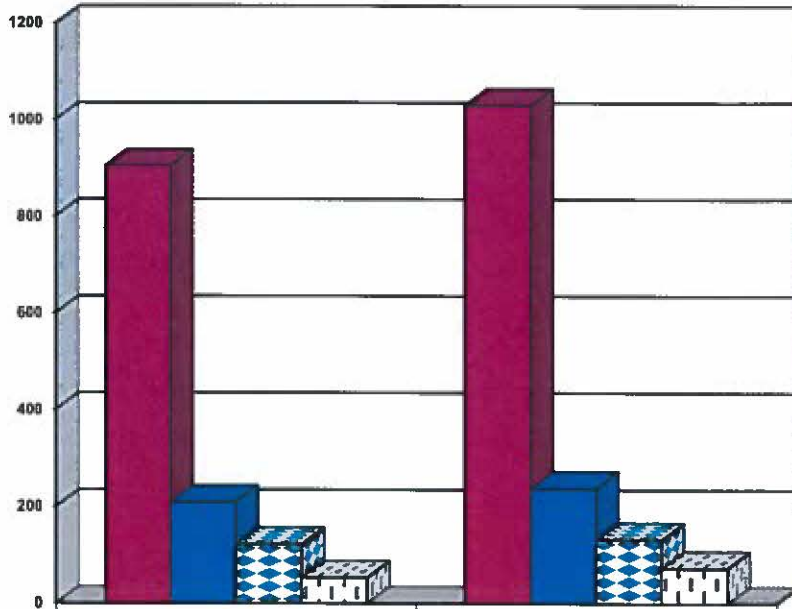
### Age Demographics for Adult Intakes



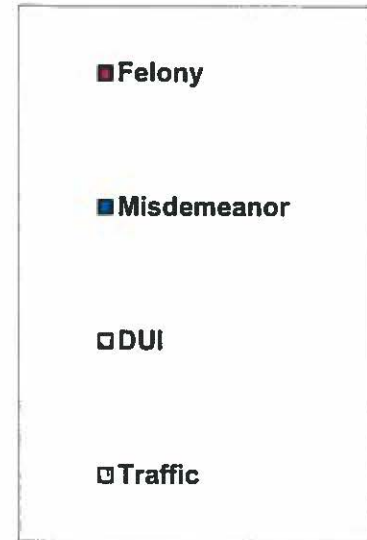
### Restitution Ordered in New Adult Cases



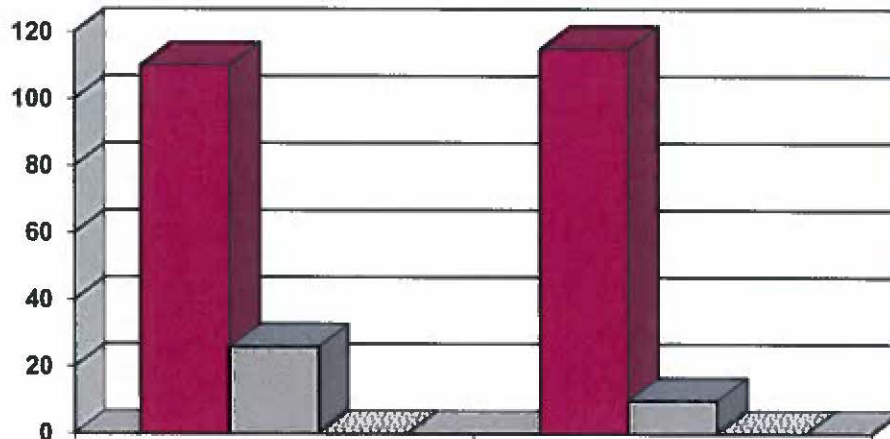
### Breakdown of Adult Caseload at End of Reporting Periods



	December 2018	December 2019
Felony	904	1030
Misdemeanor	209	238
DUI	122	132
Traffic	53	73



### Adult Investigations Completed



	Oct, Nov, Dec 2018	Oct, Nov, Dec 2019
Presentence Reports	110	115
Pre-trial/Bond Reports	26	10
Record Checks	0	0



### Commitments to Illinois Department of Corrections

