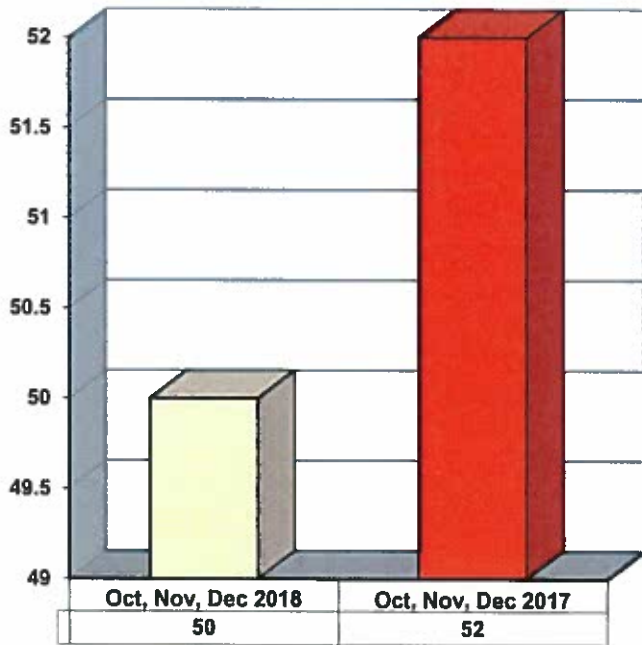
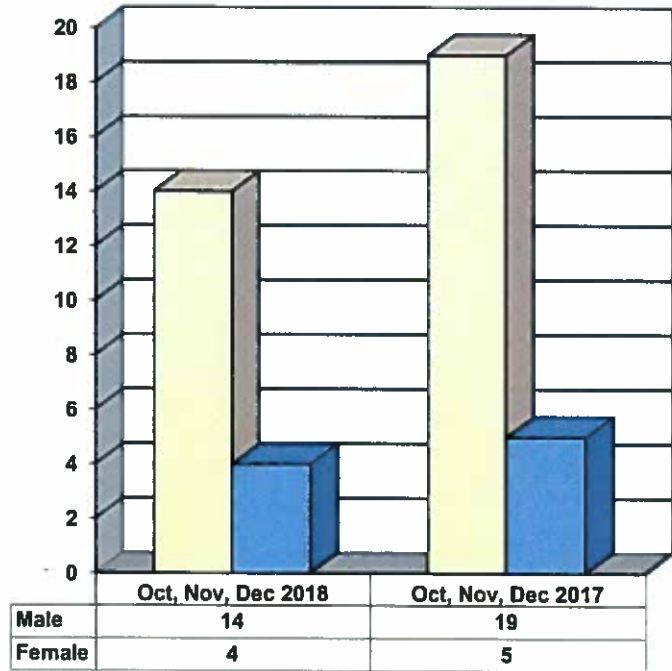


**JUVENILE SUPERVISION INFORMATION
MONTHS OF OCTOBER, NOVEMBER AND DECEMBER 2018
(Compared to Prior Year)**

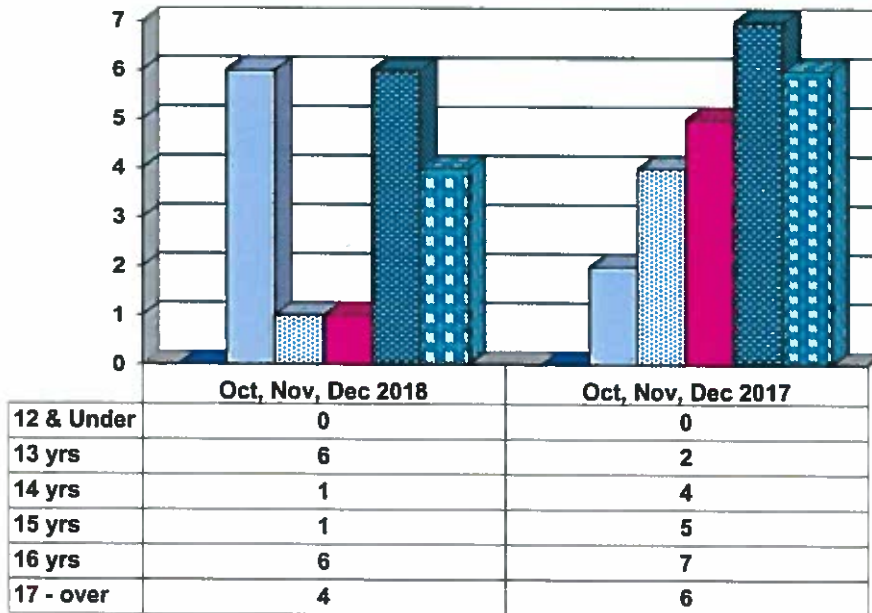
Juvenile Delinquency Petitions Filed



Gender Demographics for Juvenile Admissions

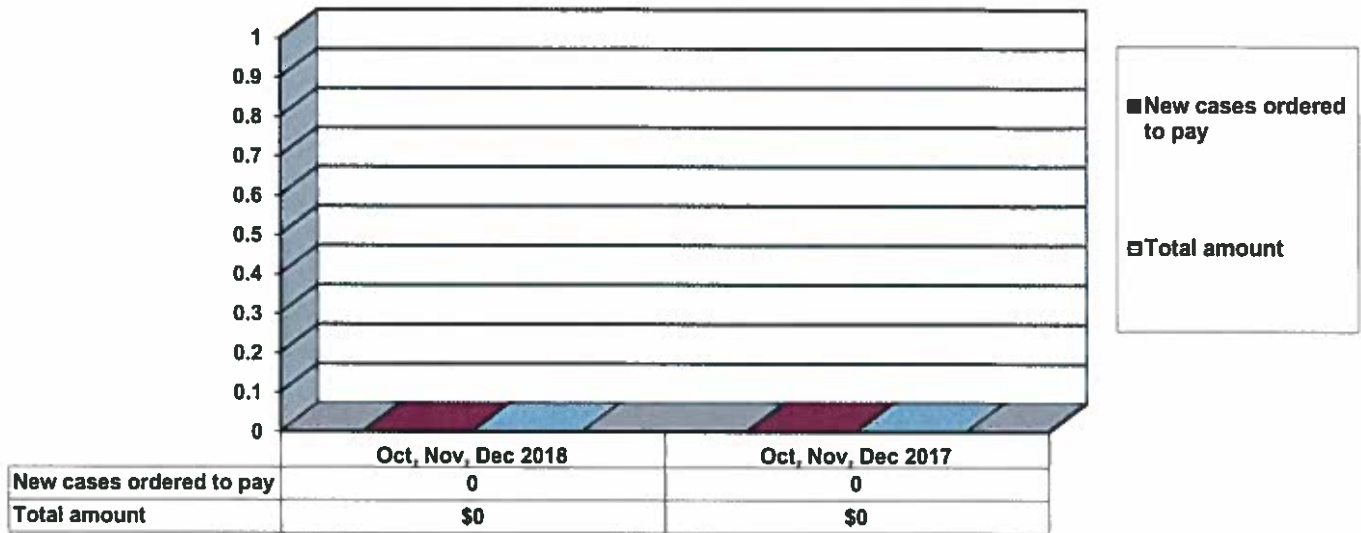


Age Demographics for Juvenile Admissions

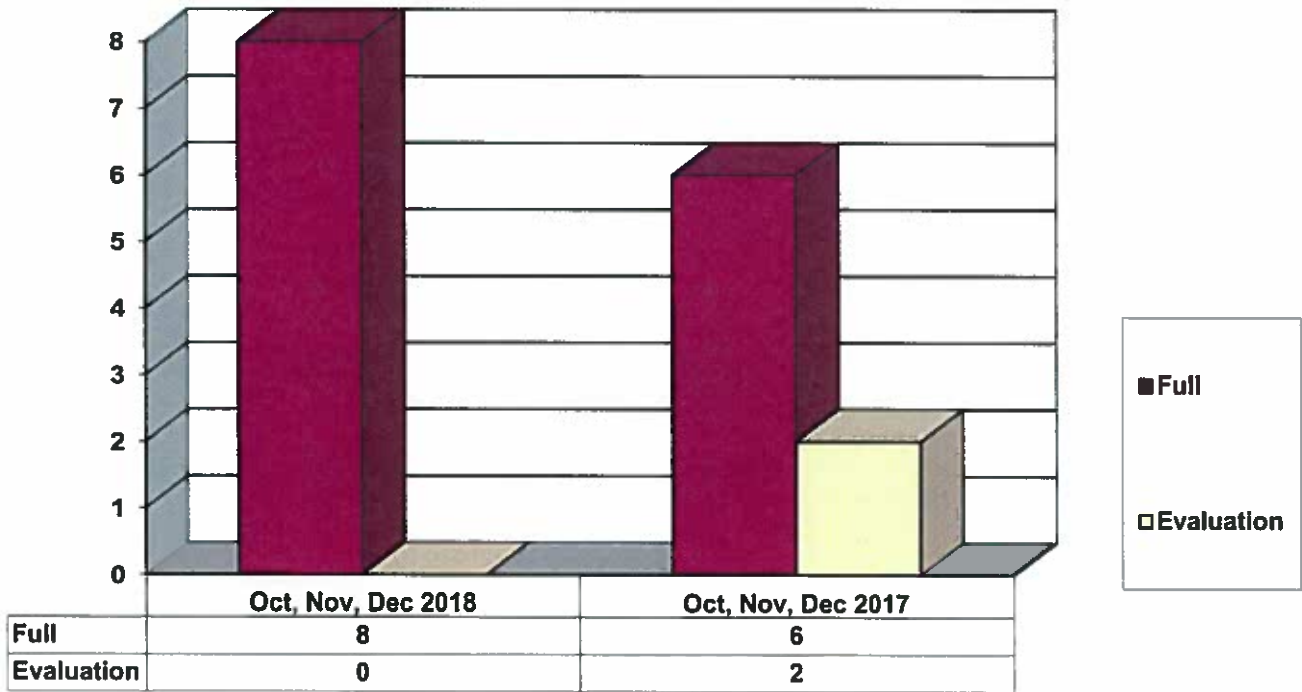


12 & Under
 13 yrs
 14 yrs
 15 yrs
 16 yrs
 17 - over

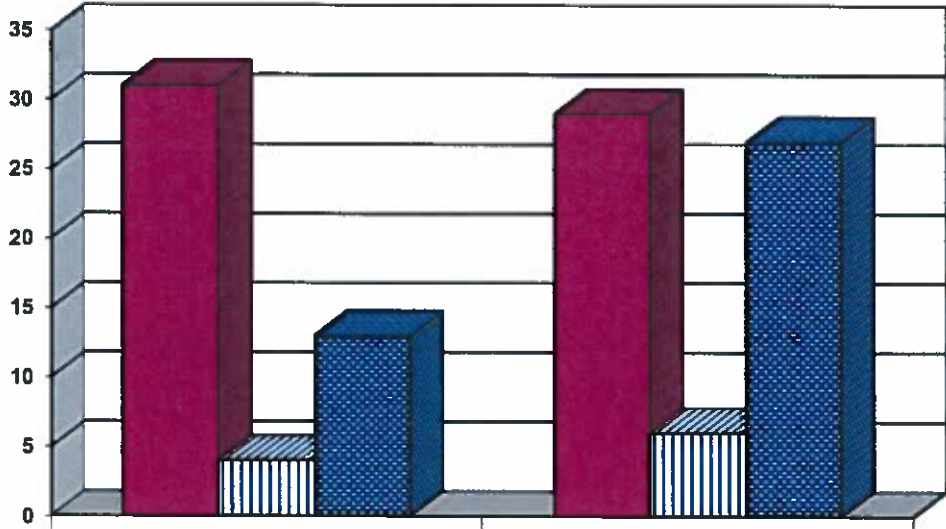
Restitution Ordered in New Juvenile Cases



Commitments to Illinois Department of Juvenile Justice



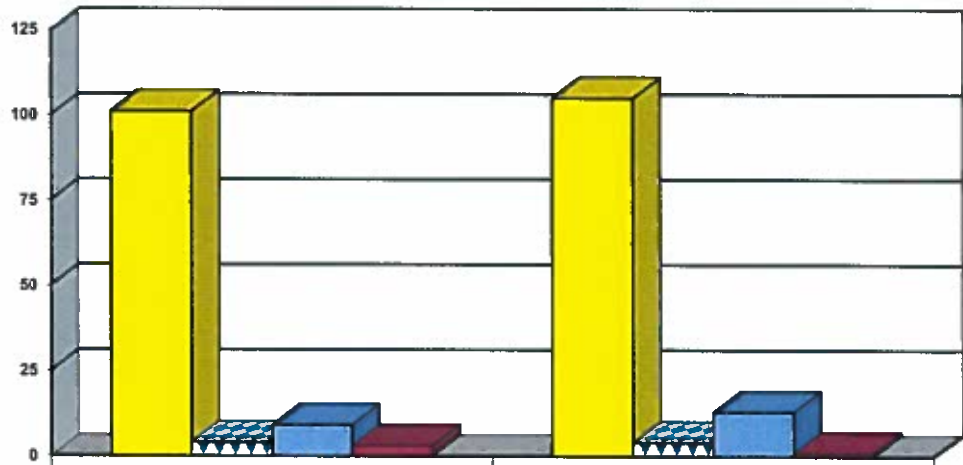
Investigations Completed by Juvenile Division



	Oct, Nov, Dec 2018	Oct, Nov, Dec 2017
Social Histories	31	29
Supplemental Social History	4	6
Remission/Review	13	27

■ Social Histories
 ■ Supplemental Social History
 ■ Remission/Review

Juvenile Caseload at End of Reporting Periods

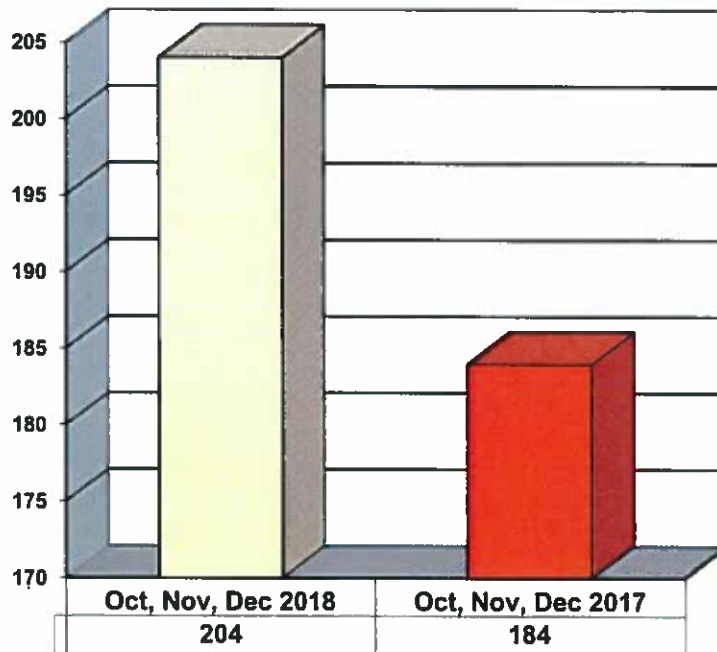


	December 2018	December 2017
Probation	101	105
Continued under Supervision	4	4
Informal	9	13
Other	3	1

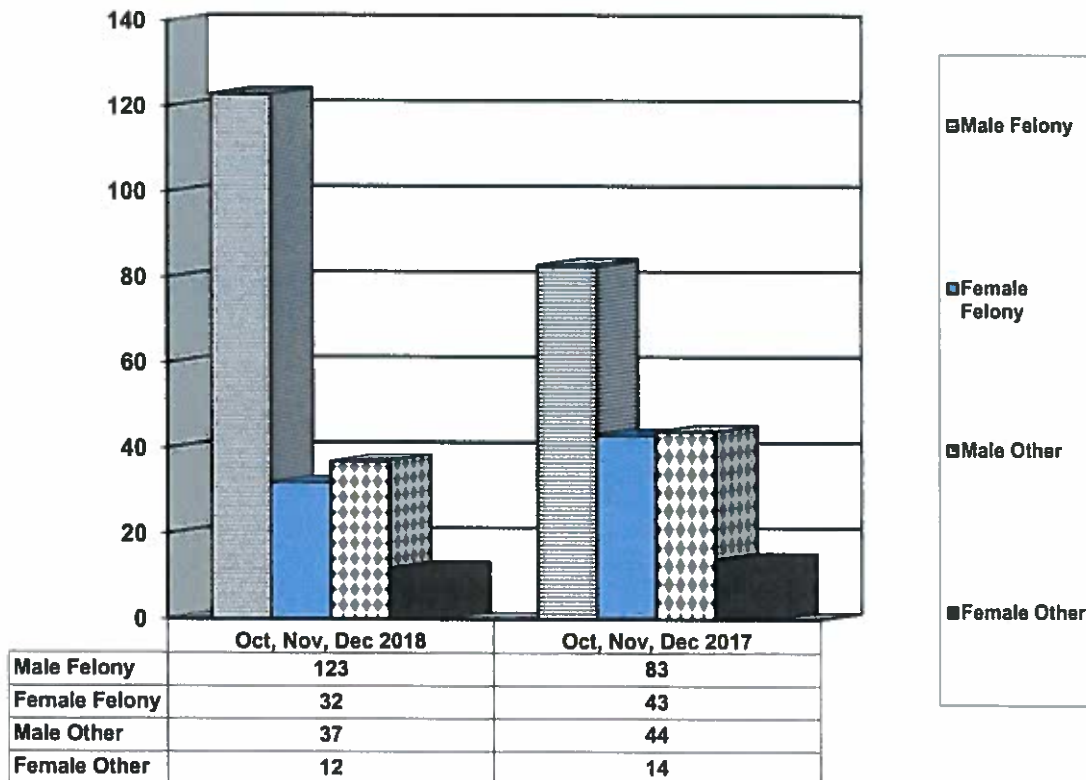
■ Probation
 ■ Continued under Supervision
 ■ Informal
 ■ Other

**ADULT SUPERVISION INFORMATION
MONTHS OF OCTOBER, NOVEMBER AND DECEMBER 2018
(Compared to Prior Year)**

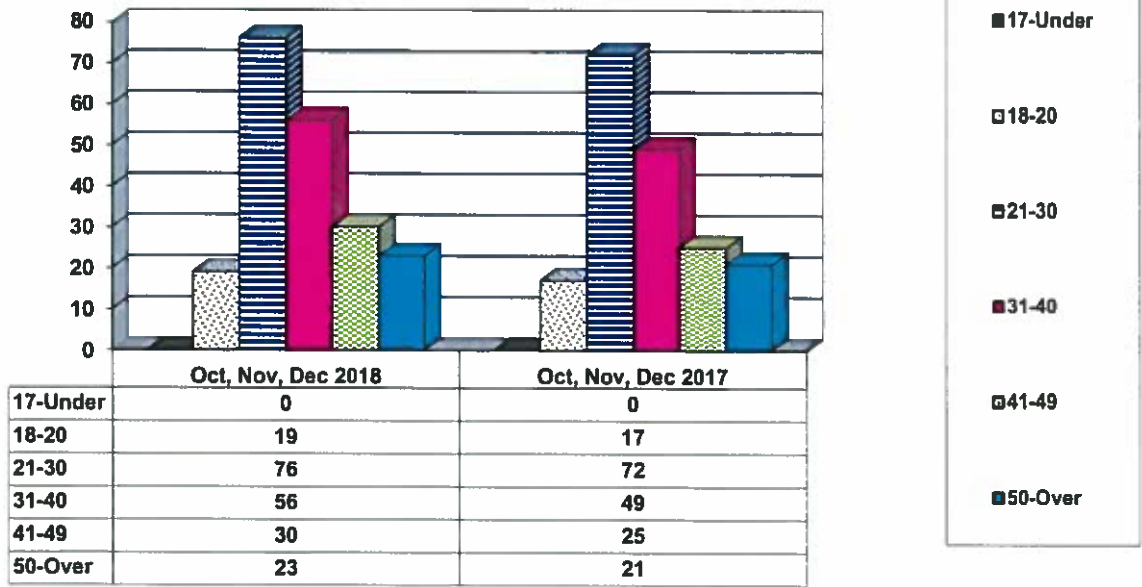
Adult Intakes Completed



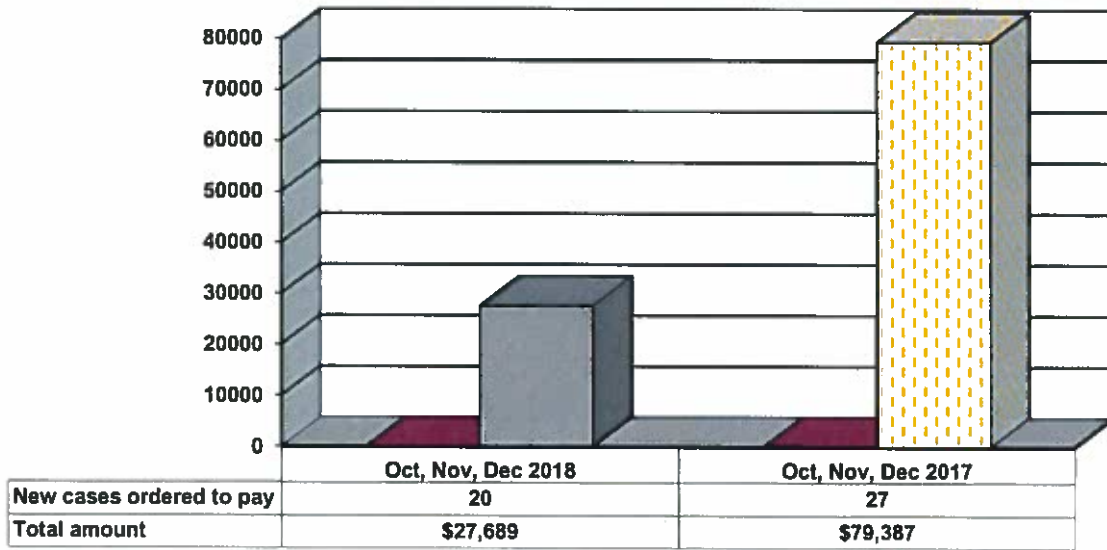
Gender Demographics for Adult Intakes



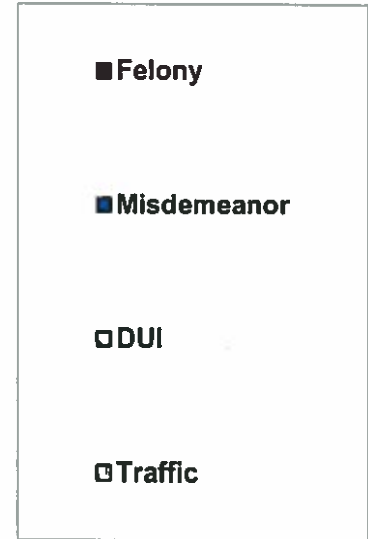
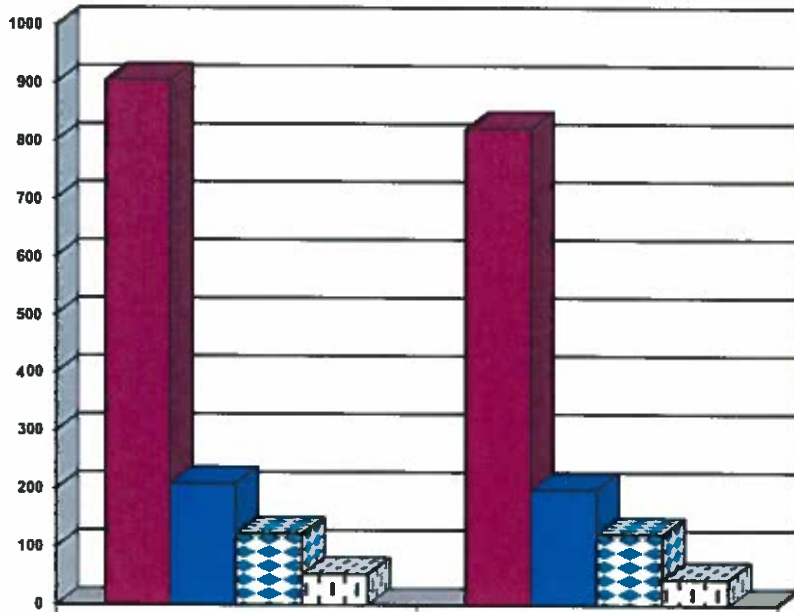
Age Demographics for Adult Intakes



Restitution Ordered in New Adult Cases

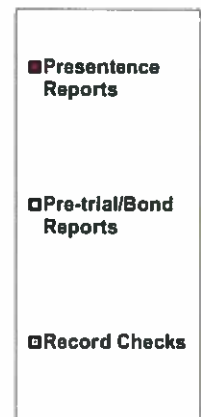
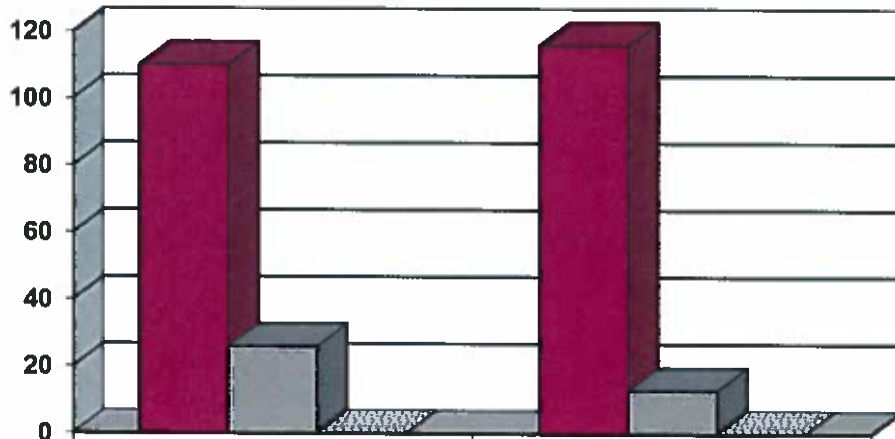


Breakdown of Adult Caseload at End of Reporting Periods



	December 2018	December 2017
Felony	904	821
Misdemeanor	209	199
DUI	122	122
Traffic	53	45

Adult Investigations Completed



	Oct, Nov, Dec 2018	Oct, Nov, Dec 2017
Presentence Reports	110	116
Pre-trial/Bond Reports	26	13
Record Checks	0	0

Commitments to Illinois Department of Corrections

