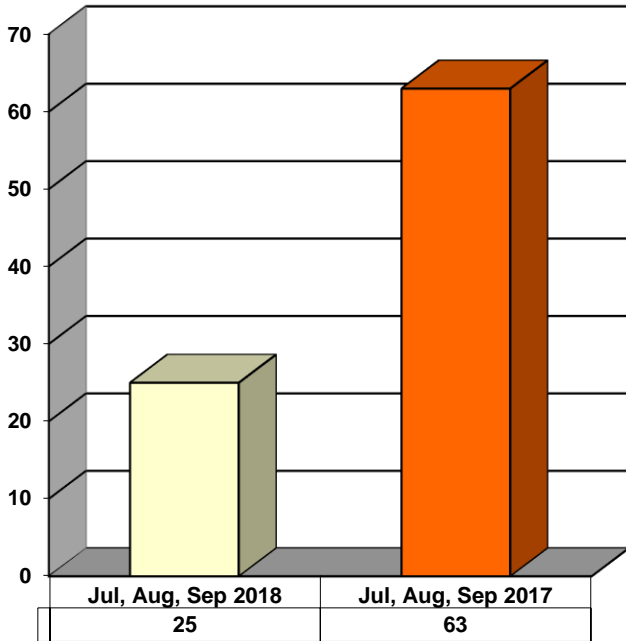
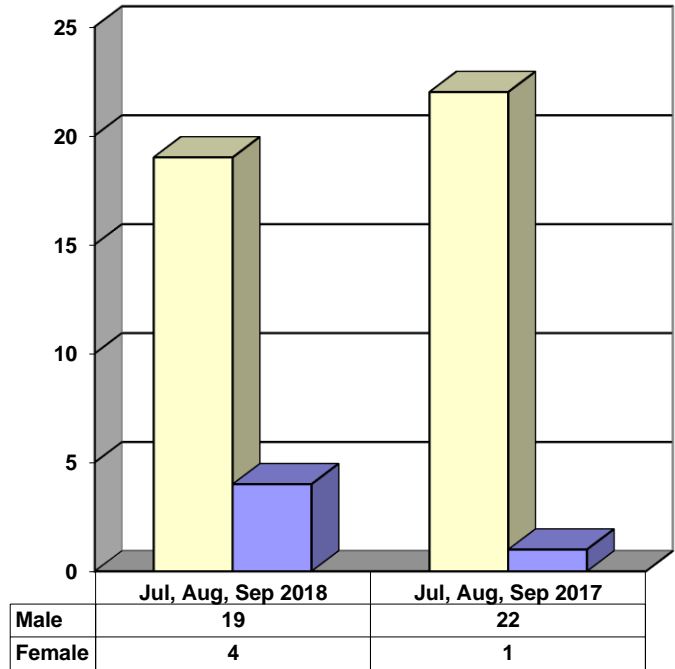


**JUVENILE SUPERVISION INFORMATION
MONTHS OF JULY, AUGUST AND SEPTEMBER 2018
(Compared to Prior Year)**

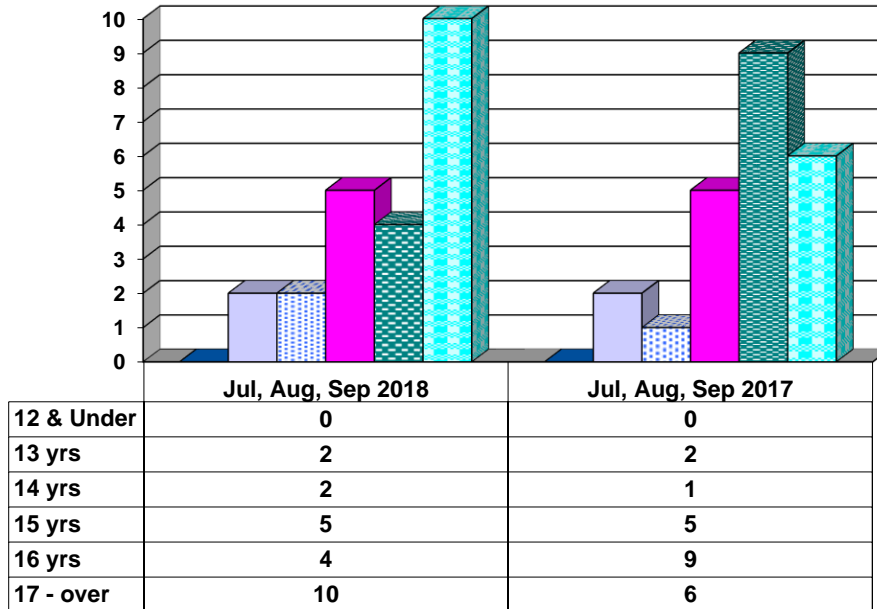
Juvenile Delinquency Petitions Filed



Gender Demographics for Juvenile Admissions

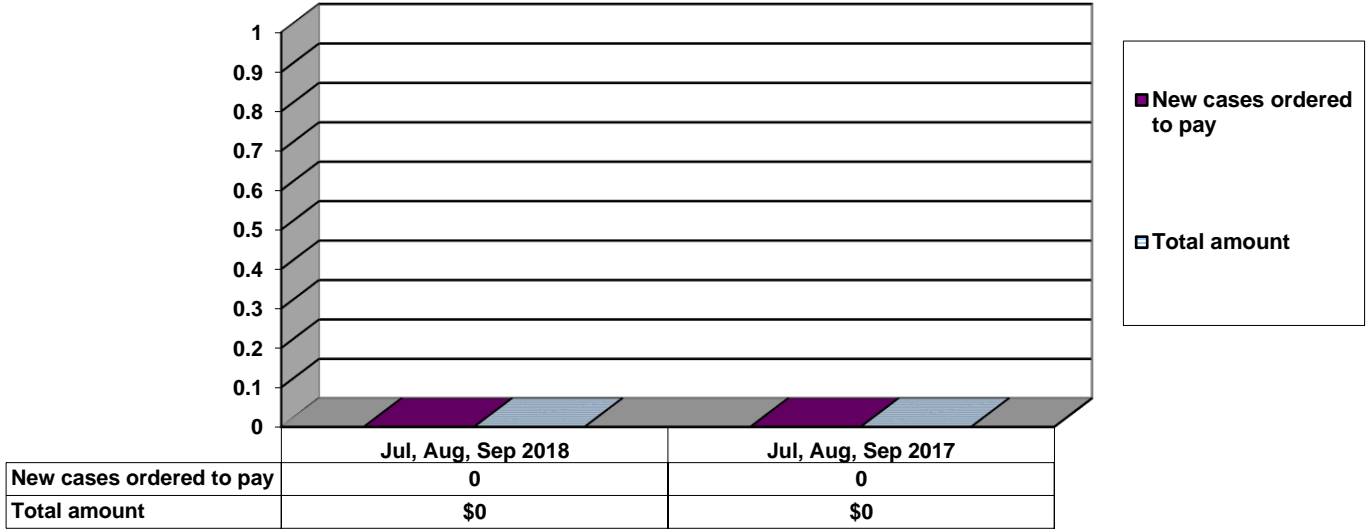


Age Demographics for Juvenile Admissions

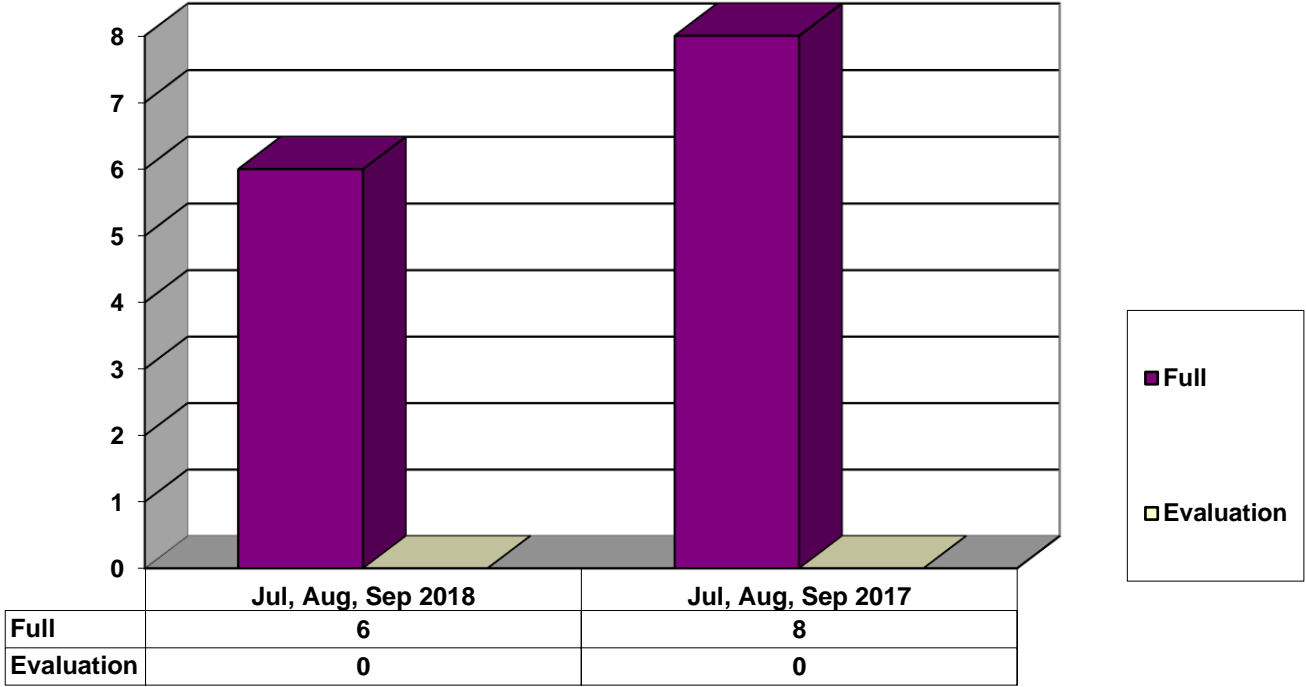


■ 12 & Under
 ■ 13 yrs
 ■ 14 yrs
 ■ 15 yrs
 ■ 16 yrs
 ■ 17 - over

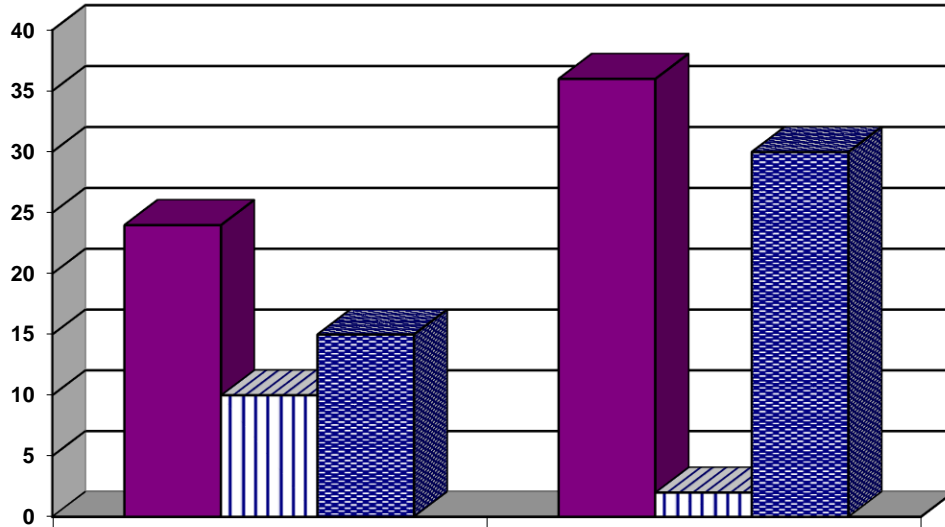
Restitution Ordered in New Juvenile Cases



Commitments to Illinois Department of Juvenile Justice



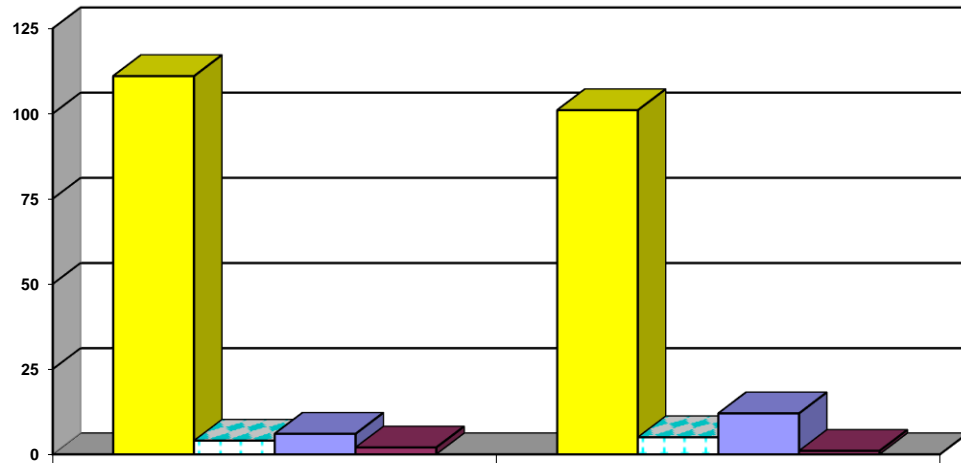
Investigations Completed by Juvenile Division



	Jul, Aug, Sep 2018	Jul, Aug, Sep 2017
Social Histories	24	36
Supplemental Social History	10	2
Remission/Review	15	30



Juvenile Caseload at End of Reporting Periods

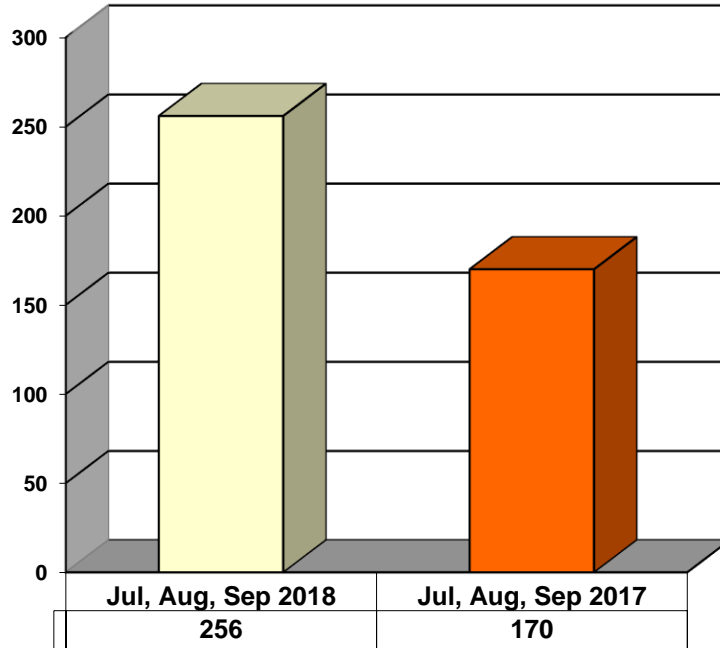


	September 2018	September 2017
Probation	111	101
Continued under Supervision	4	5
Informal	6	12
Other	2	1

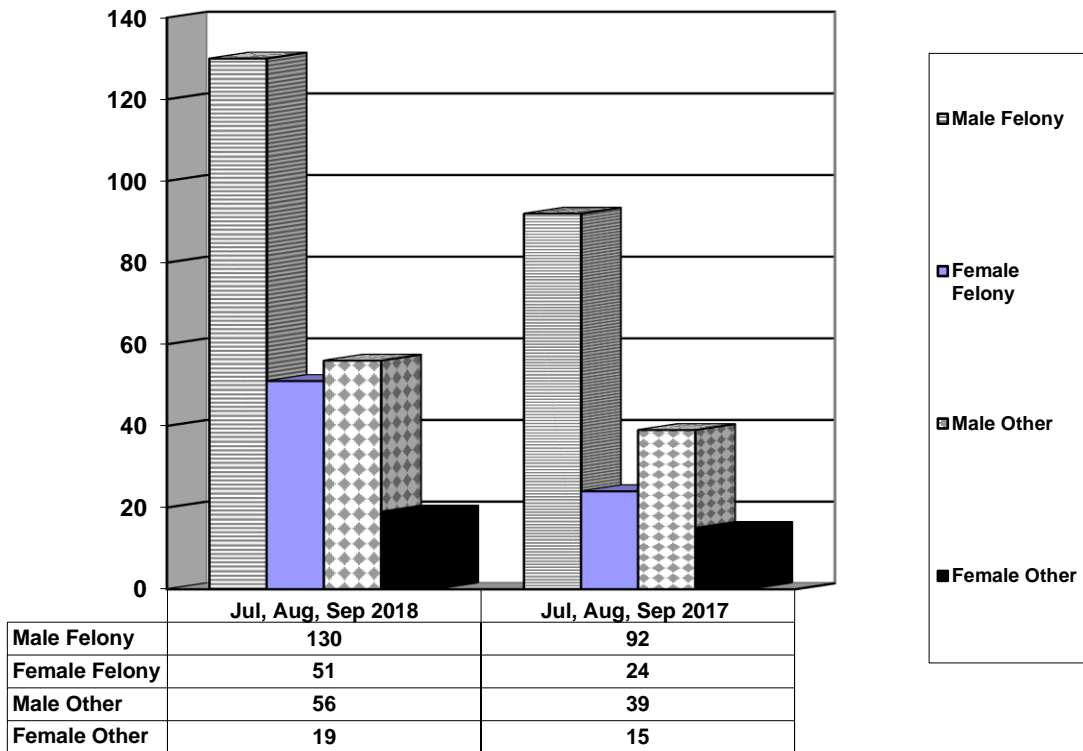


**ADULT SUPERVISION INFORMATION
JULY, AUGUST AND SEPTEMBER 2018
(Compared to Prior Year)**

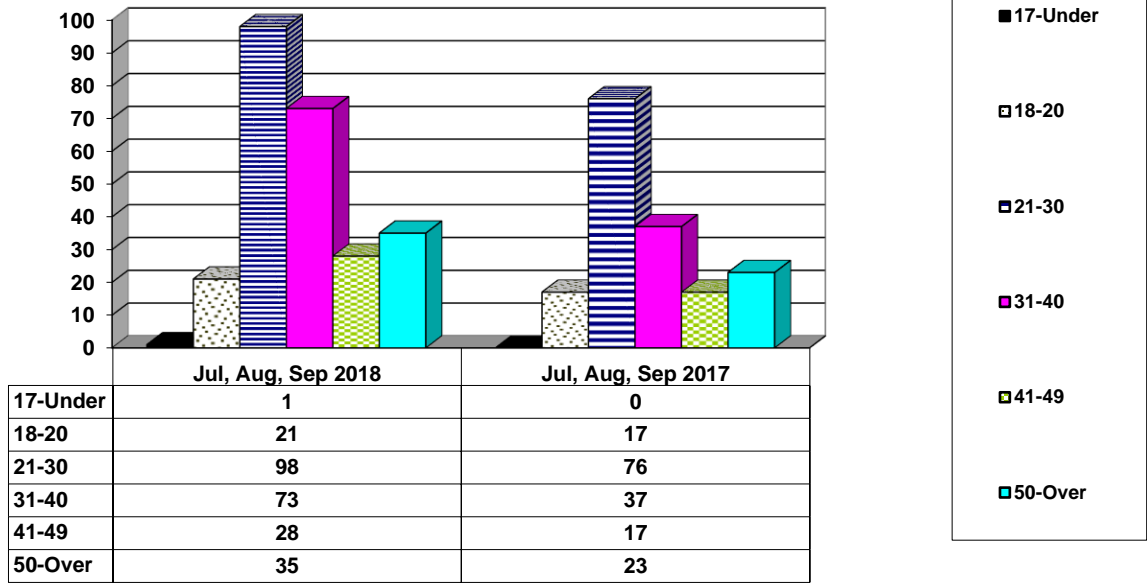
Adult Intakes Completed



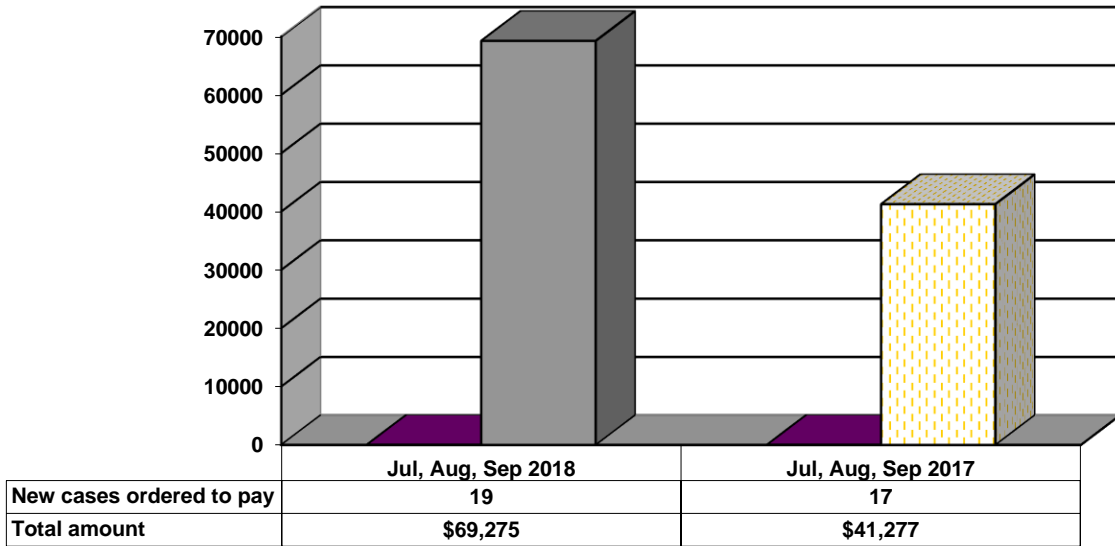
Gender Demographics for Adult Intakes



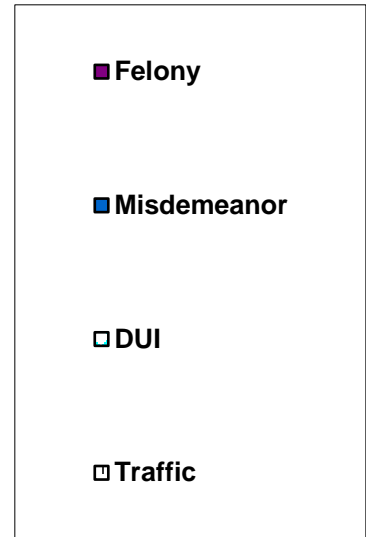
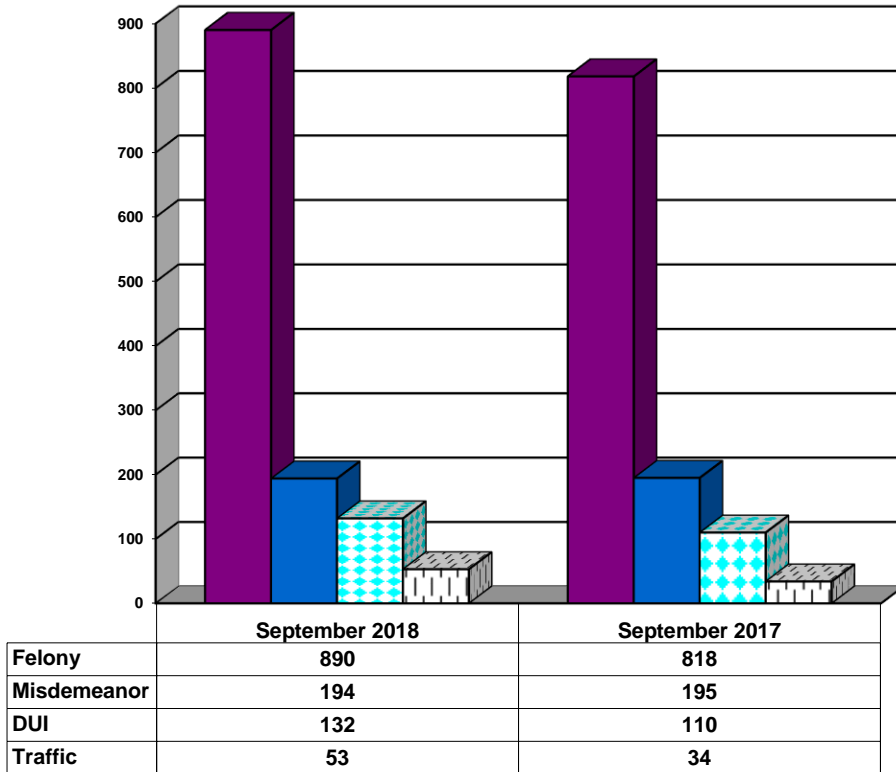
Age Demographics for Adult Intakes



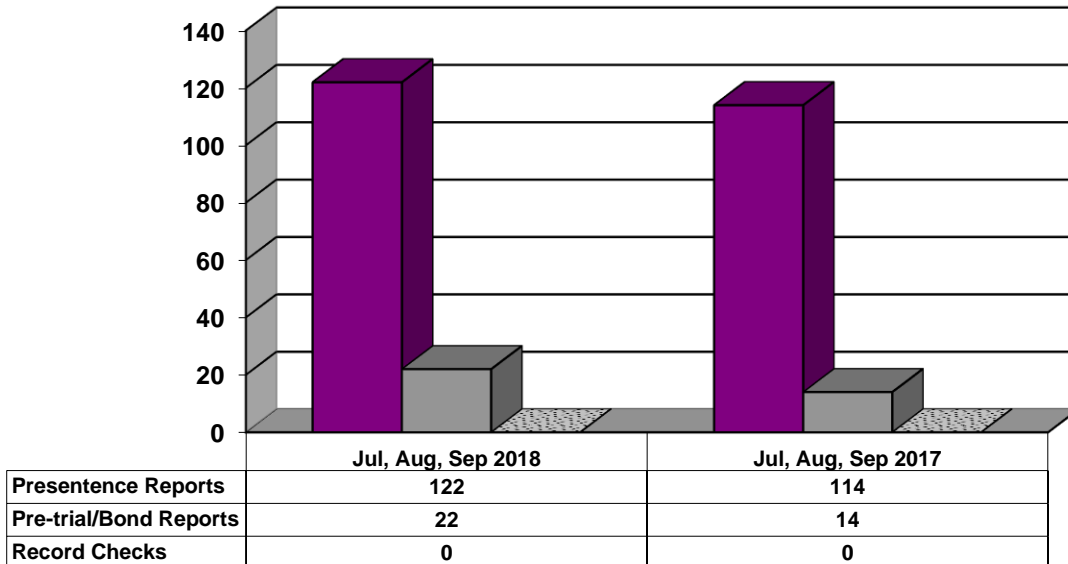
Restitution Ordered in New Adult Cases



Breakdown of Adult Caseload at End of Reporting Periods



Adult Investigations Completed



Commitments to Illinois Department of Corrections

