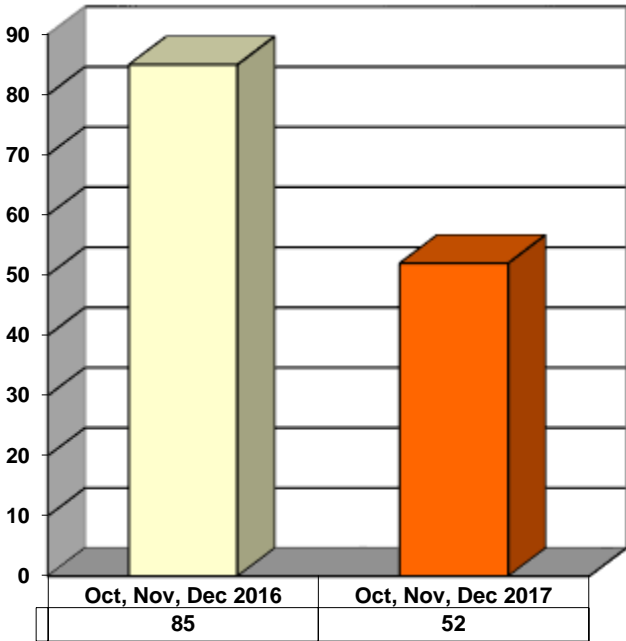
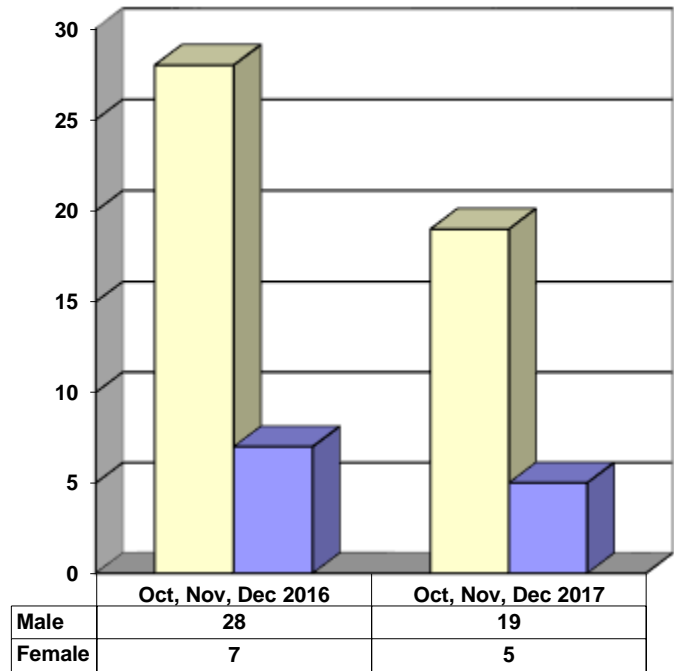


**JUVENILE SUPERVISION INFORMATION  
MONTHS OF OCTOBER, NOVEMBER AND DECEMBER 2017  
(Compared to Prior Year)**

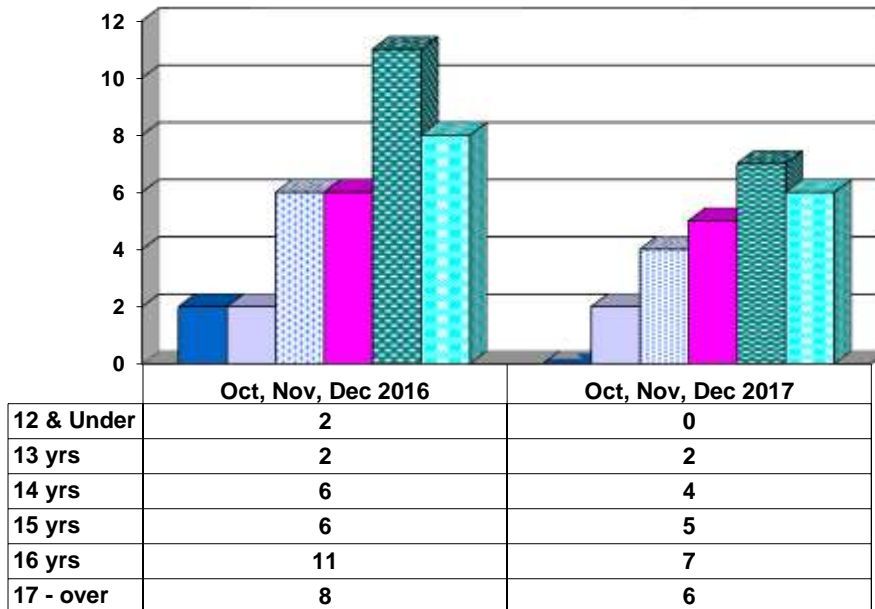
**Juvenile Delinquency Petitions Filed**



**Gender Demographics for Juvenile Admissions**

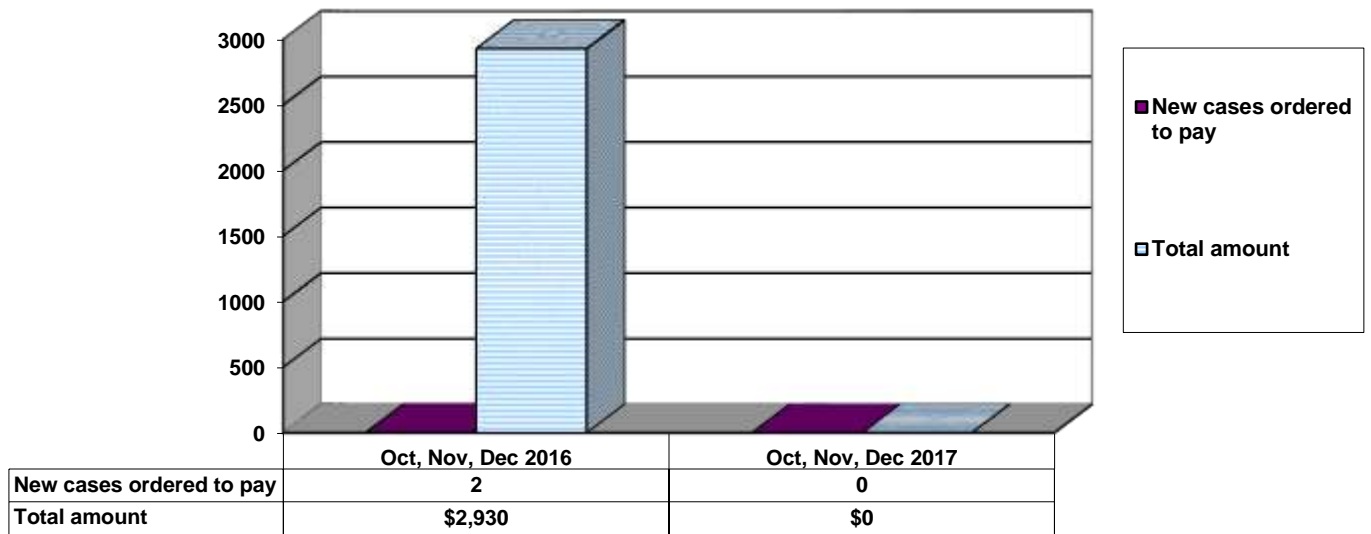


**Age Demographics for Juvenile Admissions**

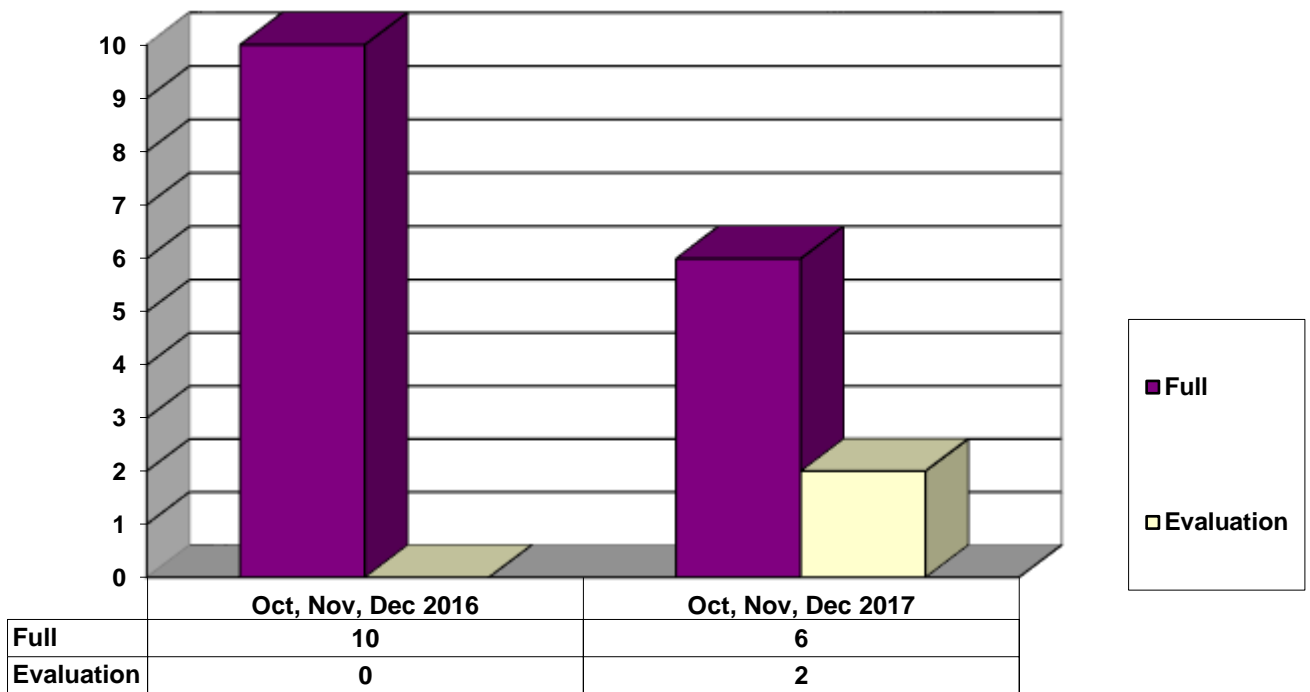


12 & Under
  13 yrs
  14 yrs
  15 yrs
  16 yrs
  17 - over

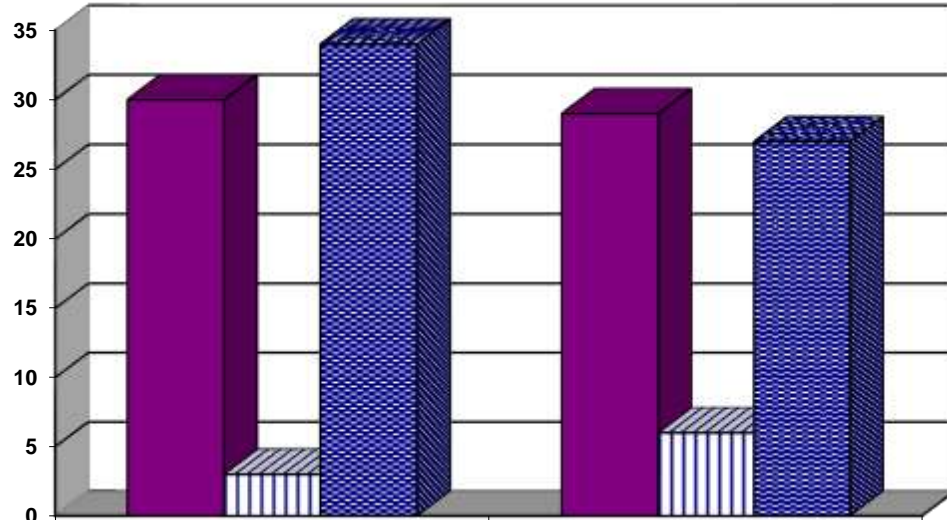
### Restitution Ordered in New Juvenile Cases



### Commitments to Illinois Department of Juvenile Justice



### Investigations Completed by Juvenile Division



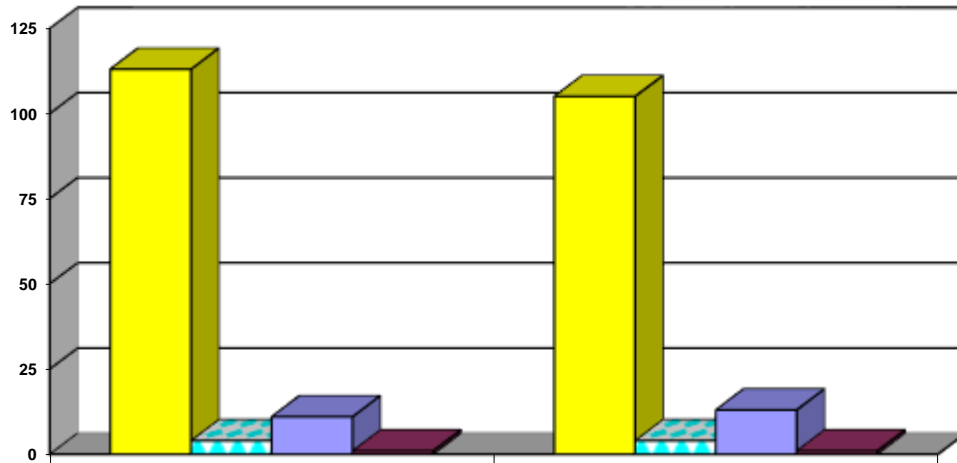
	Oct, Nov, Dec 2016	Oct, Nov, Dec 2017
Social Histories	30	29
Supplemental Social History	3	6
Remission/Review	34	27

■ Social Histories

▨ Supplemental Social History

■ Remission/Review

### Juvenile Caseload at End of Reporting Periods



	December 2016	December 2017
Probation	113	105
Continued under Supervision	4	4
Informal	11	13
Other	1	1

■ Probation

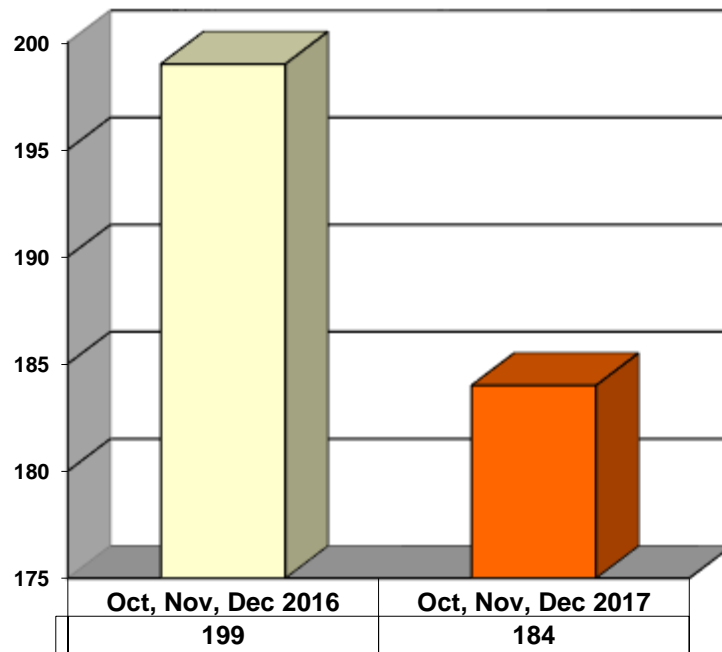
▨ Continued under Supervision

■ Informal

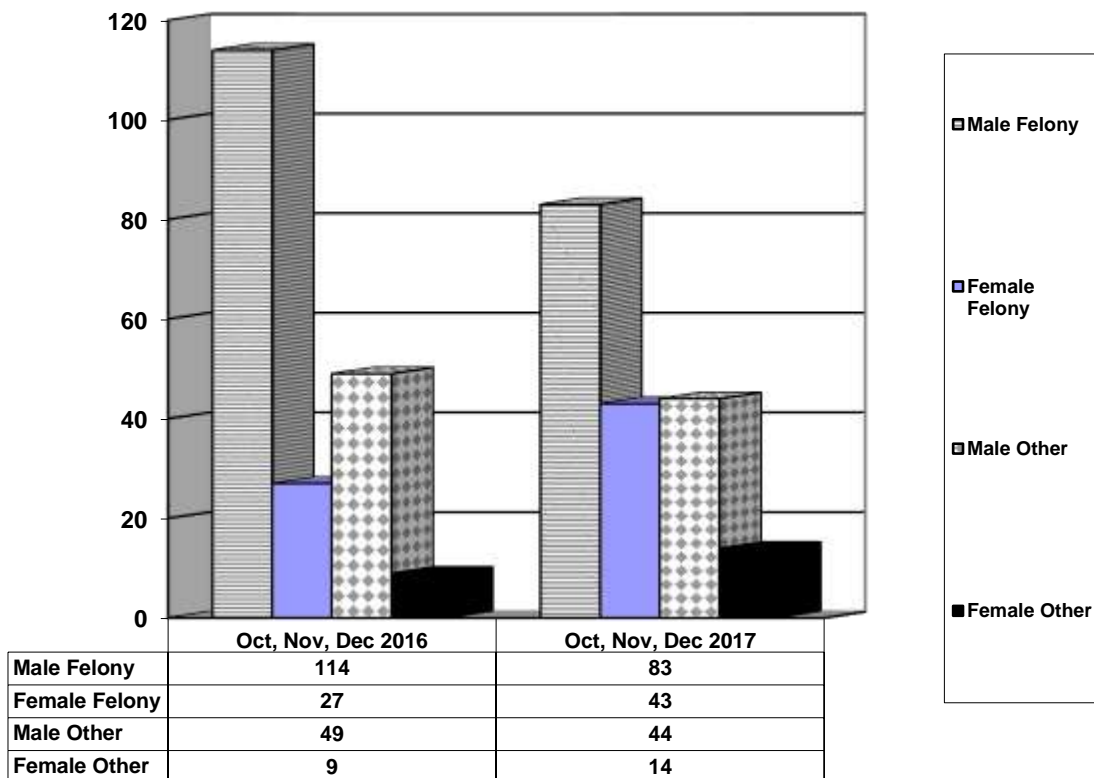
■ Other

**ADULT SUPERVISION INFORMATION  
MONTHS OF OCTOBER, NOVEMBER AND DECEMBER 2017  
(Compared to Prior Year)**

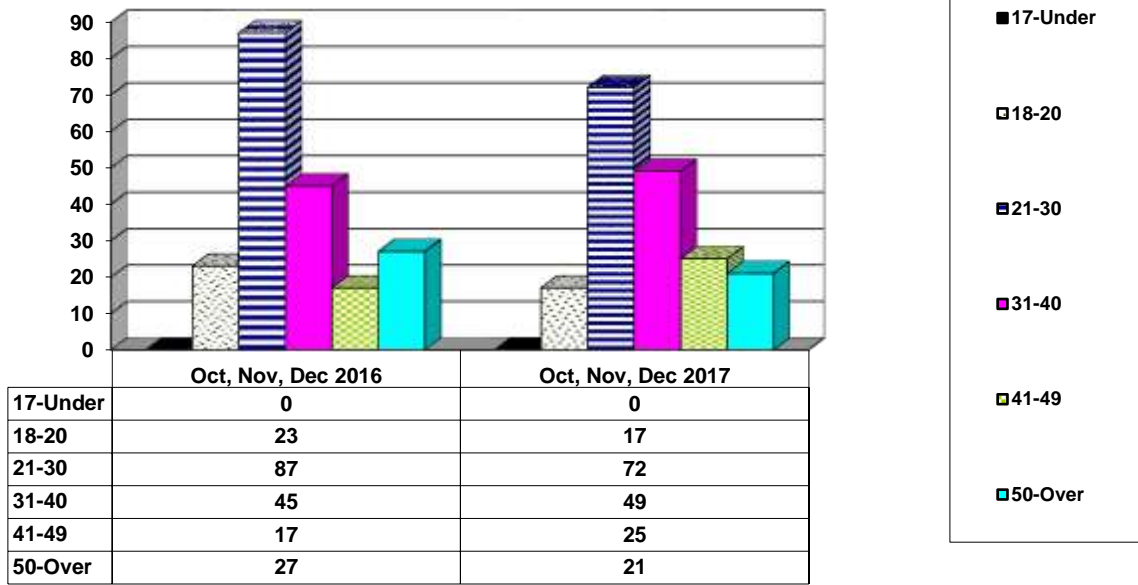
**Adult Intakes Completed**



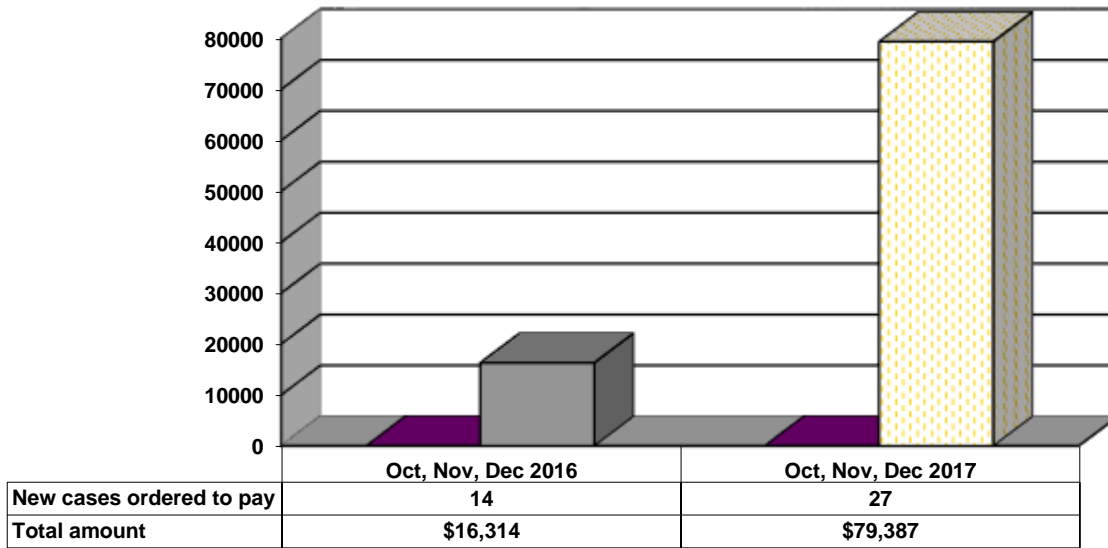
**Gender Demographics for Adult Intakes**



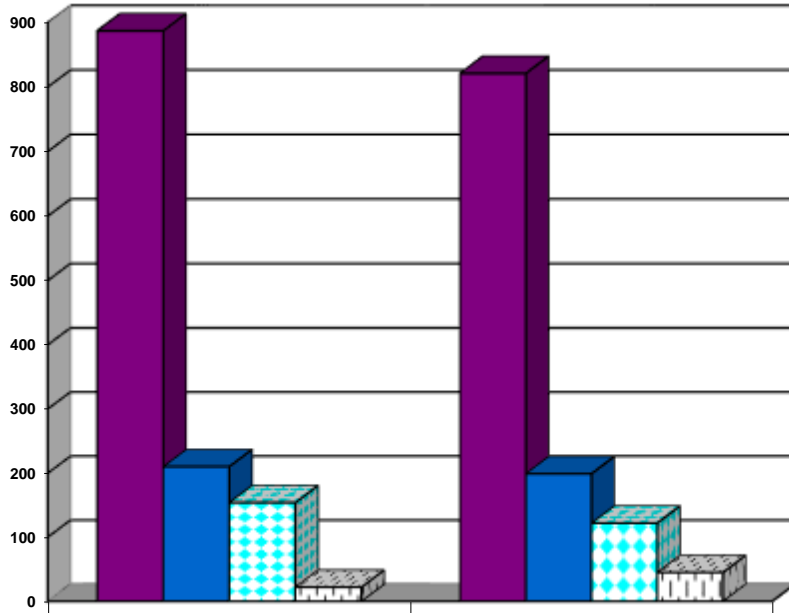
### Age Demographics for Adult Intakes



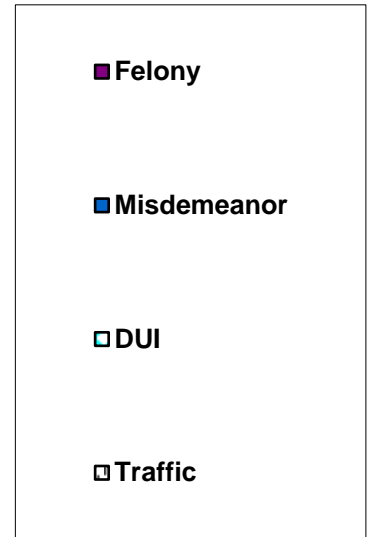
### Restitution Ordered in New Adult Cases



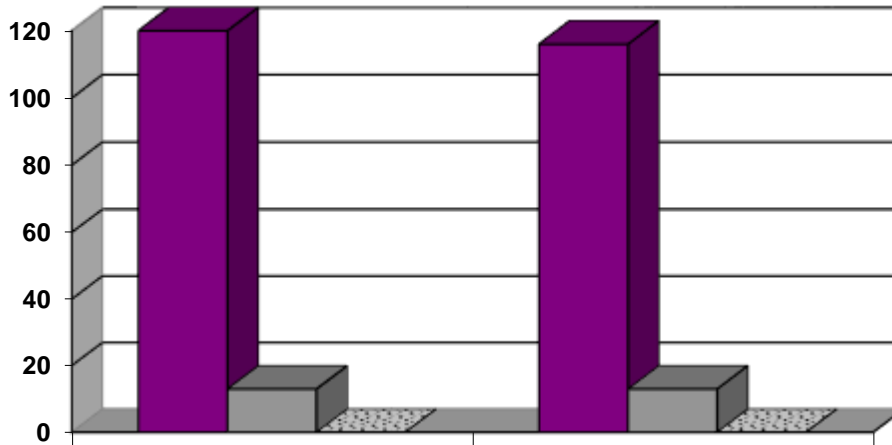
### Breakdown of Adult Caseload at End of Reporting Periods



	December 2016	December 2017
Felony	887	821
Misdemeanor	210	199
DUI	154	122
Traffic	22	45



### Adult Investigations Completed



	Oct, Nov, Dec	Oct, Nov, Dec 2017
Presentence Reports	120	116
Pre-trial/Bond Reports	13	13
Record Checks	0	0



### Commitments to Illinois Department of Corrections

