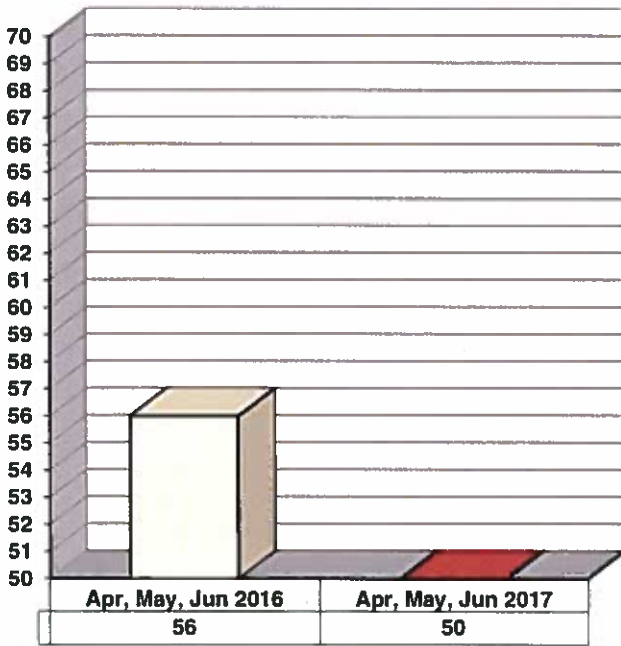
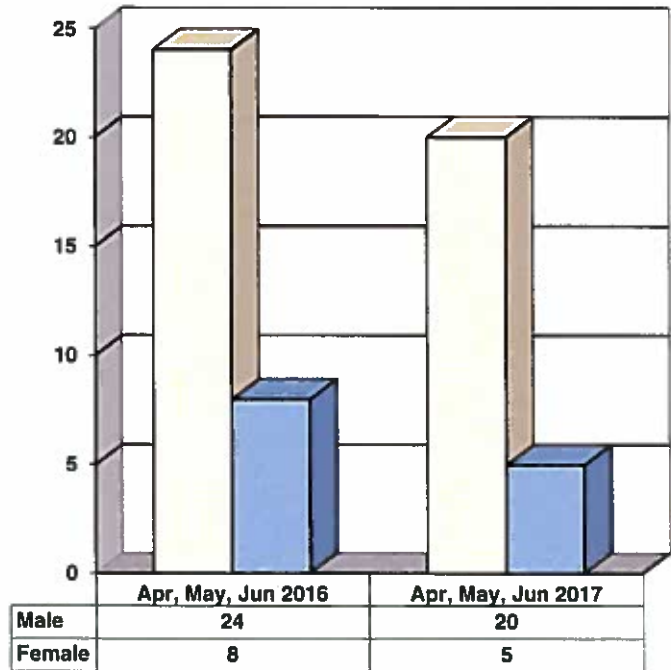


**JUVENILE SUPERVISION INFORMATION  
MONTHS OF APRIL, MAY AND JUNE 2017  
(Compared to Prior Year)**

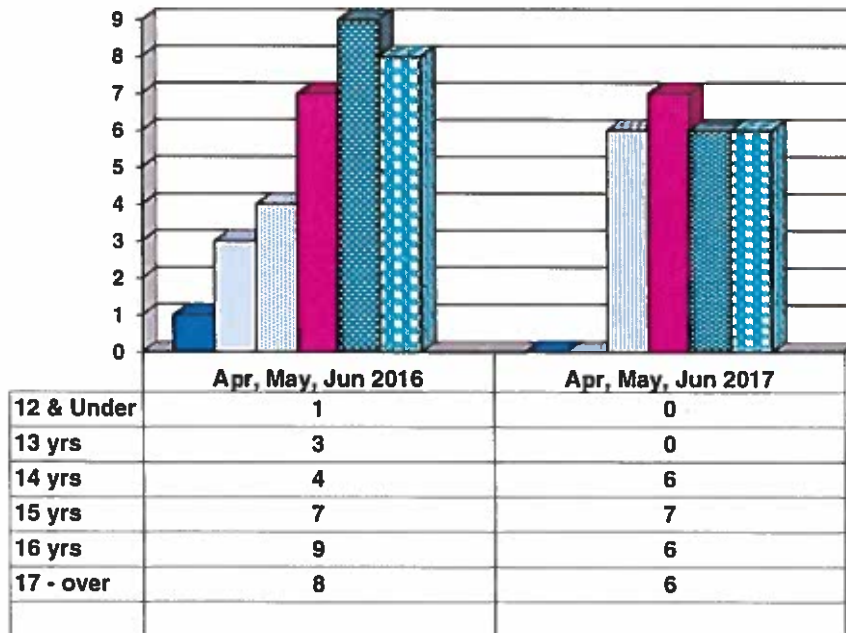
**Juvenile Delinquency Petitions Filed**



**Gender Demographics for Juvenile Admissions**

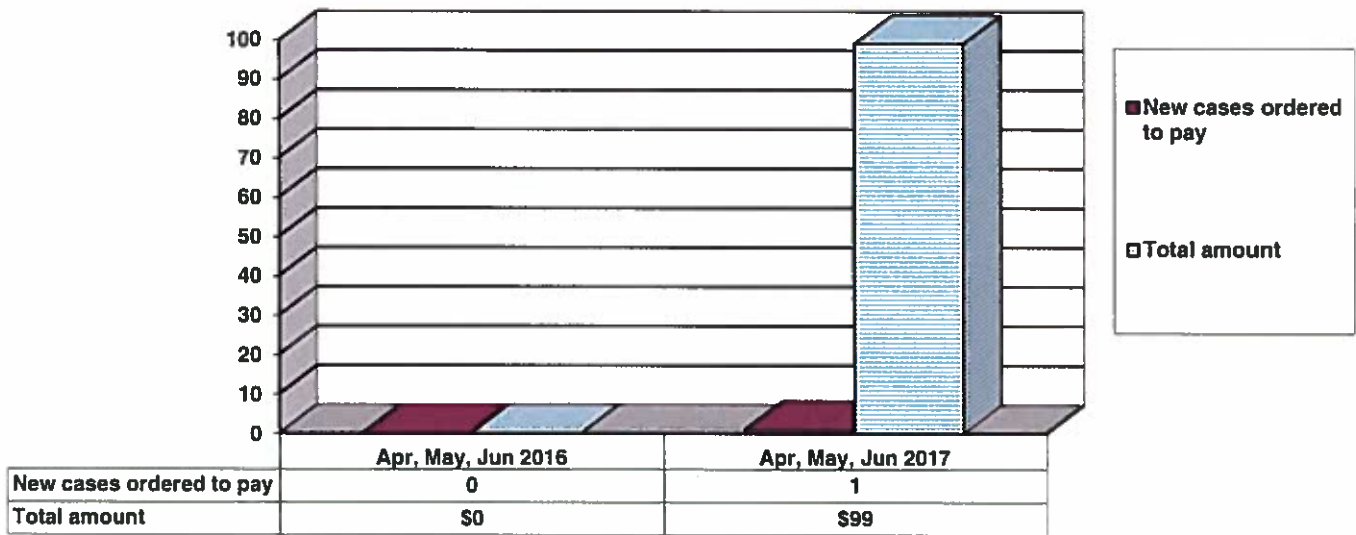


**Age Demographics for Juvenile Admissions**

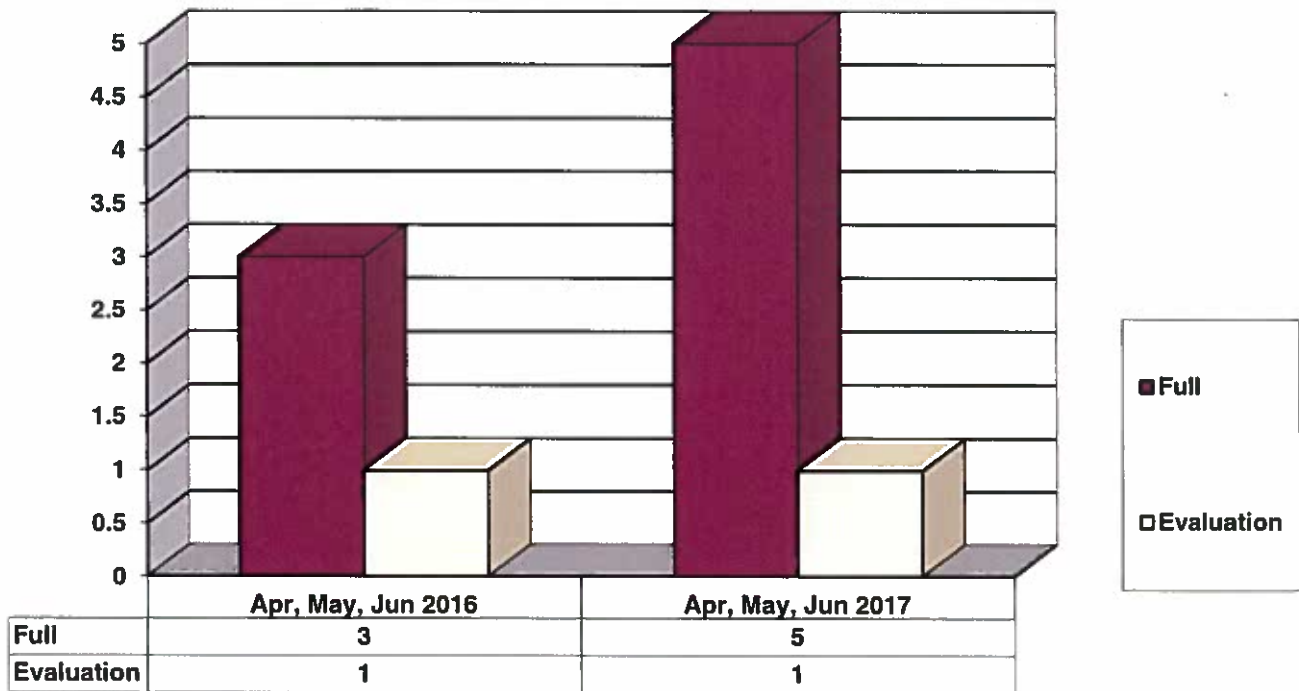


12 & Under
  13 yrs
  14 yrs
  15 yrs
  16 yrs
  17 - over

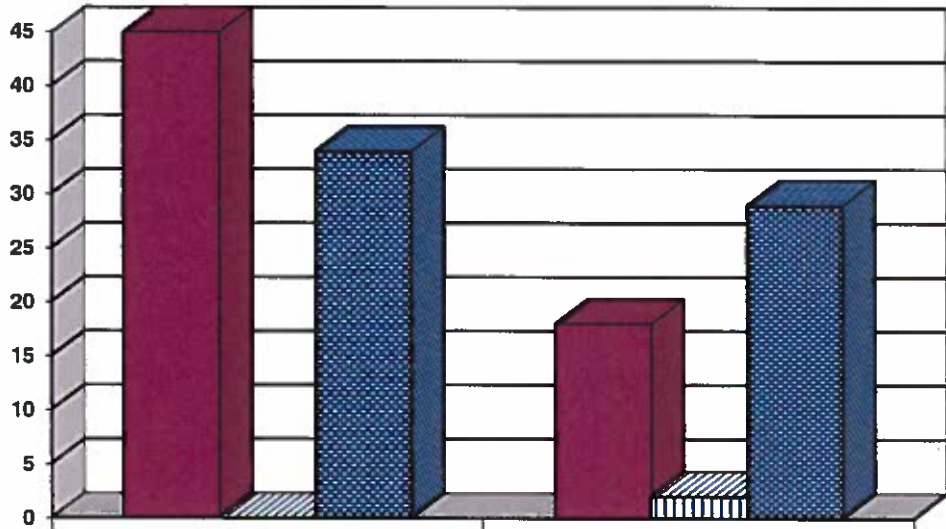
### Restitution Ordered in New Juvenile Cases



### Commitments to Illinois Department of Juvenile Justice



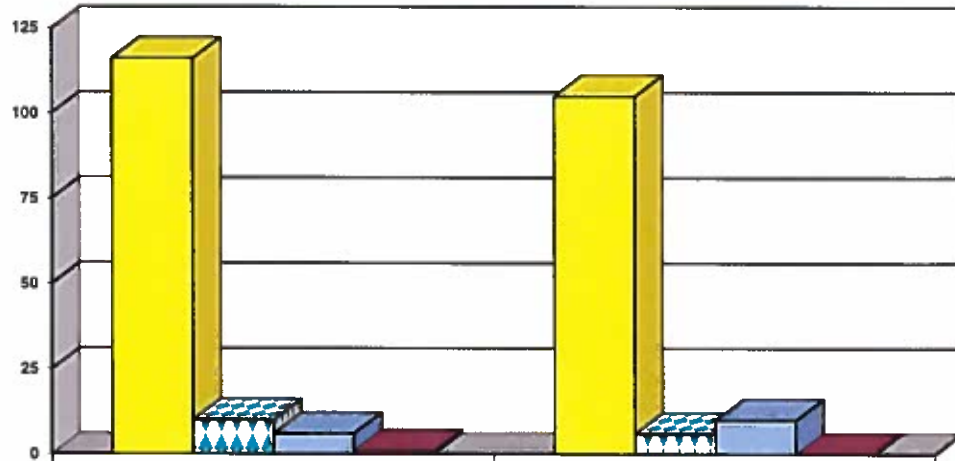
### Investigations Completed by Juvenile Division



	Apr, May, Jun 2016	Apr, May, Jun 2017
Social Histories	45	18
Supplemental Social History	0	2
Remission/Review	34	29

■ Social Histories    ■ Supplemental Social History    ■ Remission/Review

### Juvenile Caseload at End of Reporting Periods

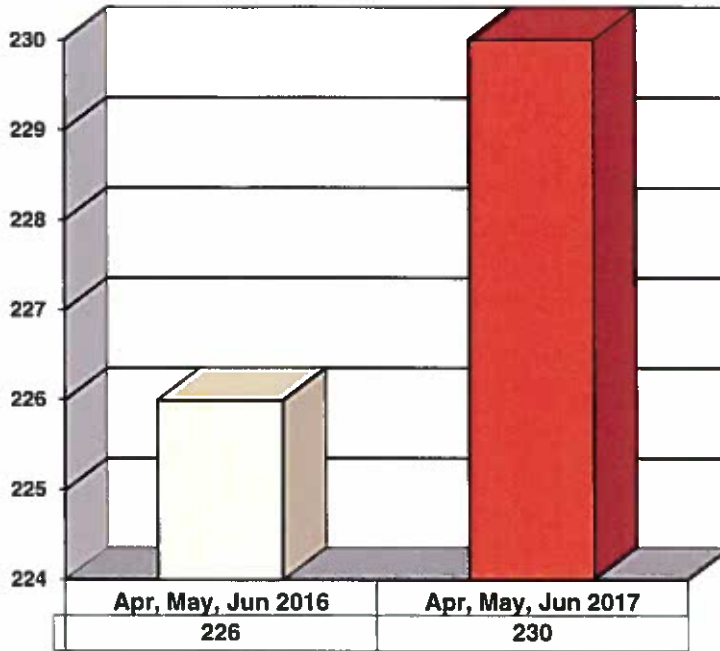


	June 2016	June 2017
Probation	116	105
Continued under Supervision	10	6
Informal	6	10
Other	1	0

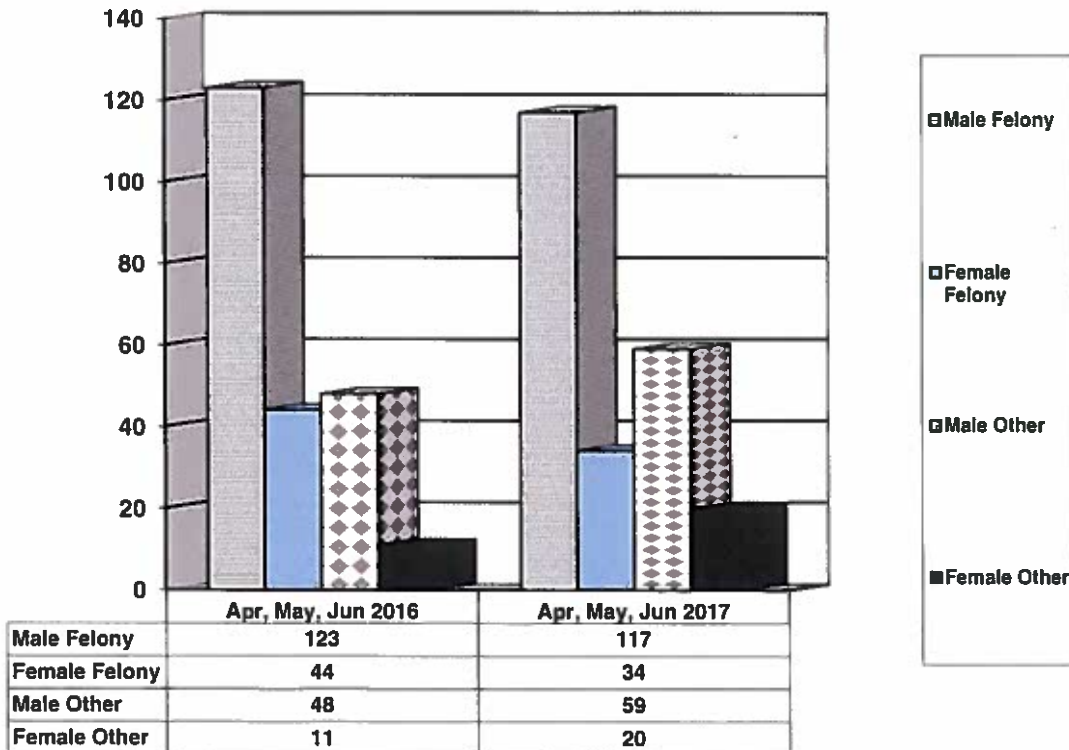
■ Probation    ■ Continued under Supervision    ■ Informal    ■ Other

**ADULT SUPERVISION INFORMATION  
MONTHS OF APRIL, MAY AND JUNE 2017  
(Compared to Prior Year)**

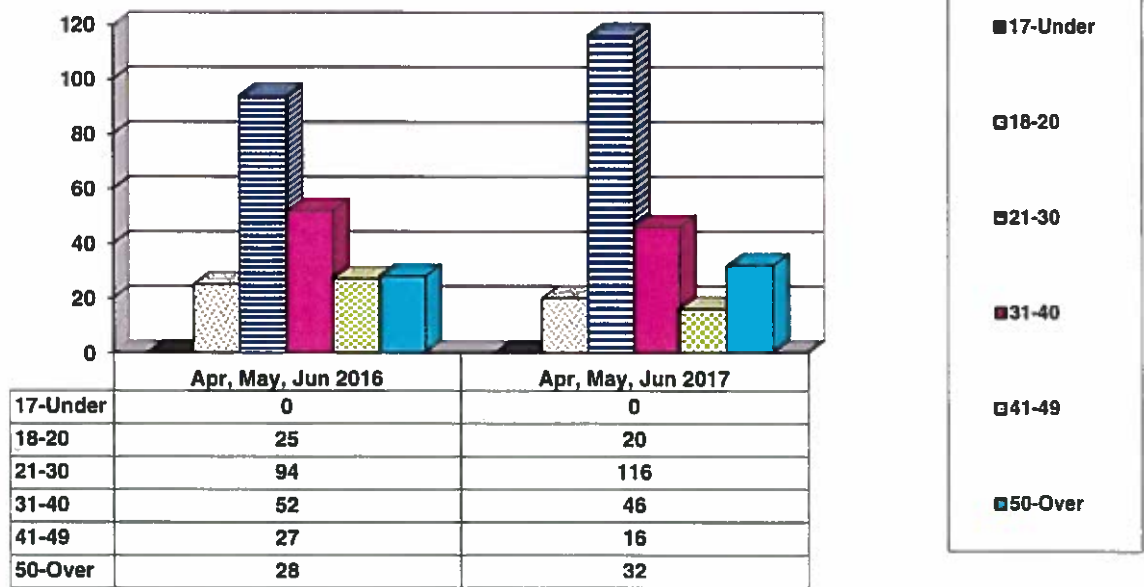
**Adult Intakes Completed**



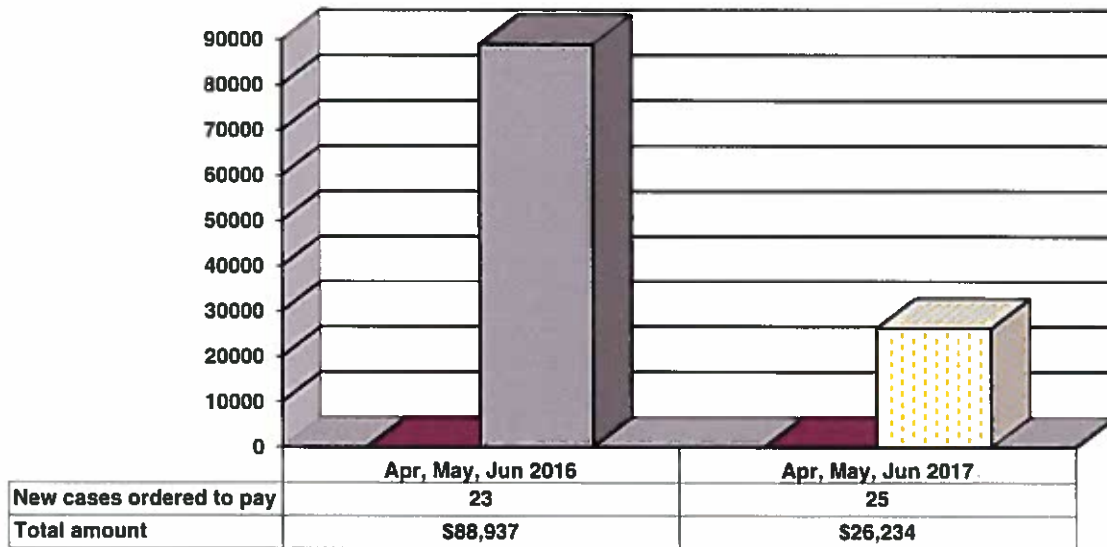
**Gender Demographics for Adult Intakes**



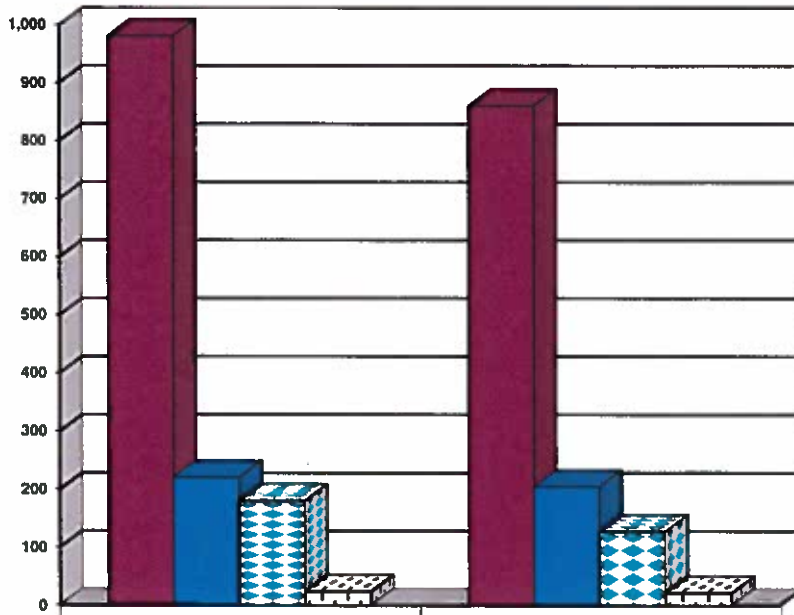
### Age Demographics for Adult Intakes



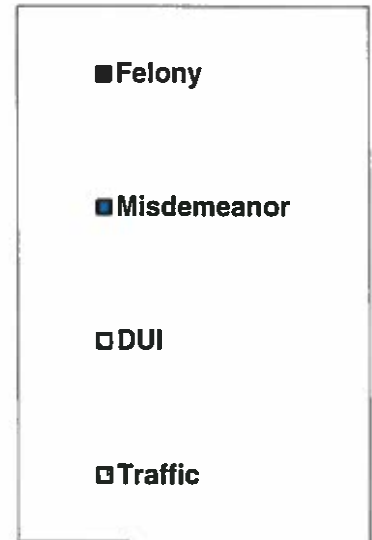
### Restitution Ordered in New Adult Cases



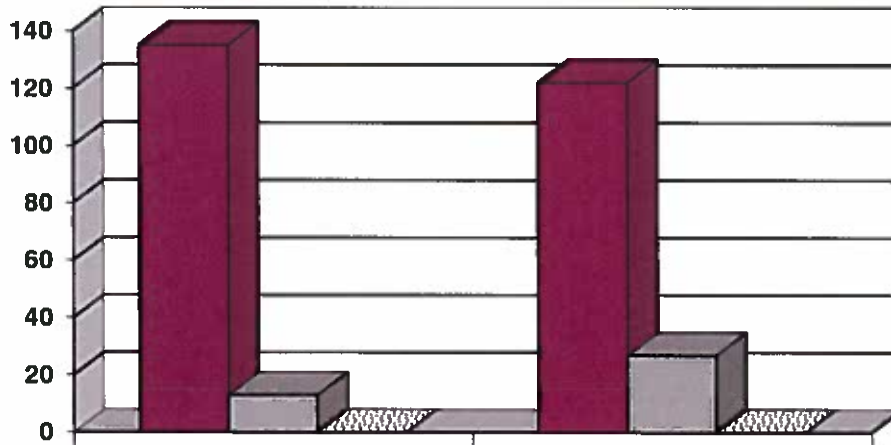
### Breakdown of Adult Caseload at End of Reporting Periods



	June 2016	June 2017
Felony	980	860
Misdemeanor	221	205
DUI	181	128
Traffic	24	22



### Adult Investigations Completed



	Apr, May, Jun 2016	Apr, May, Jun 2017
Presentence Reports	135	122
Pre-trial/Bond Reports	13	27
Record Checks	0	0



### Commitments to Illinois Department of Corrections

