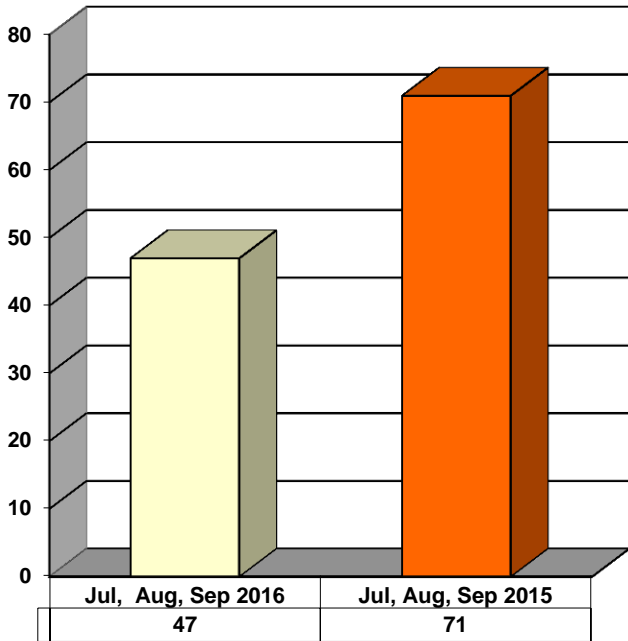
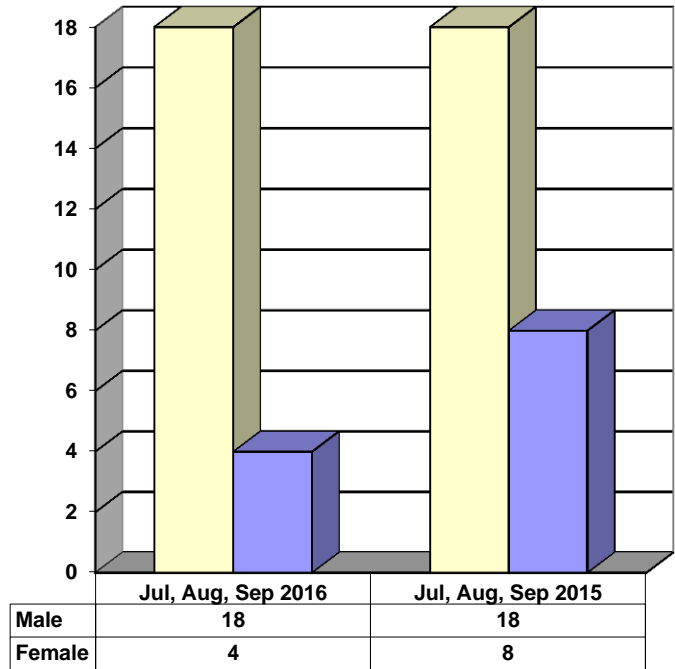


**JUVENILE SUPERVISION INFORMATION
MONTHS OF JULY, AUGUST AND SEPTEMBER 2016
(Compared to Prior Year)**

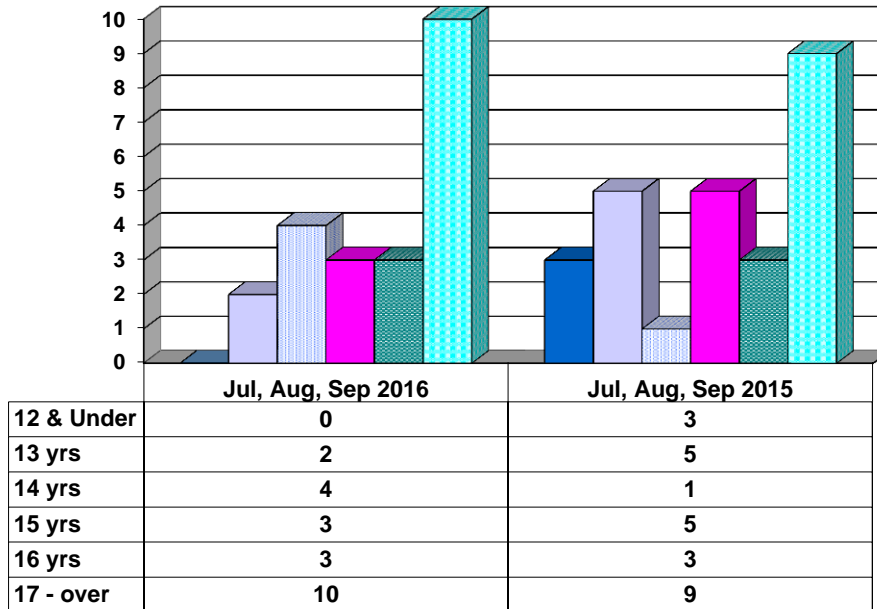
Juvenile Delinquency Petitions Filed



Gender Demographics for Juvenile Admissions

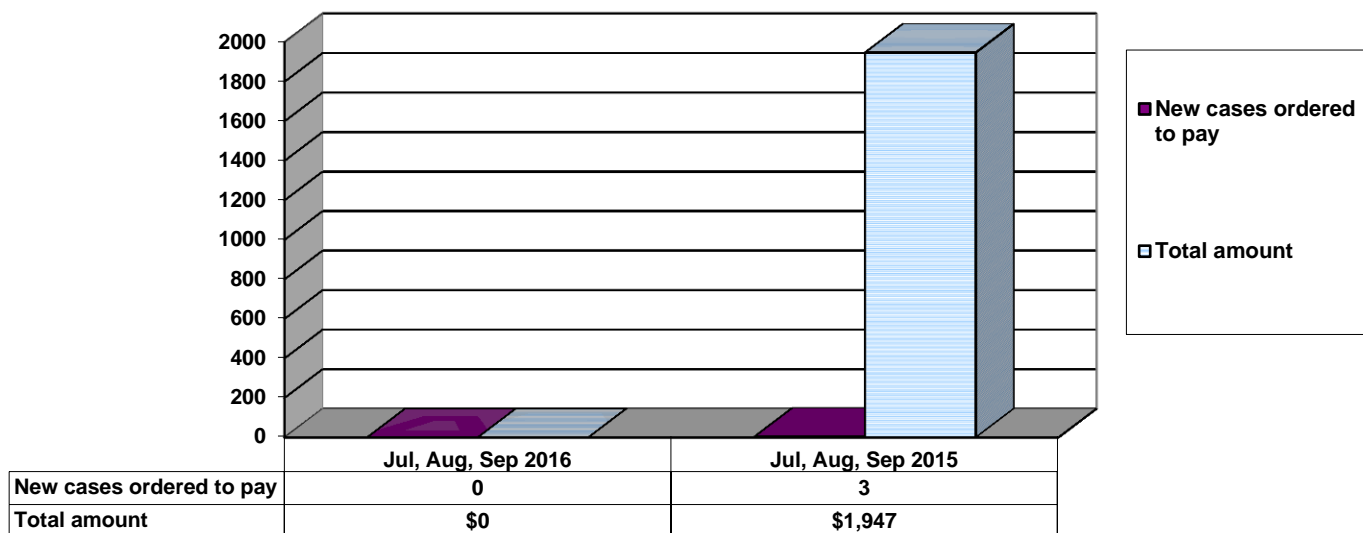


Age Demographics for Juvenile Admissions

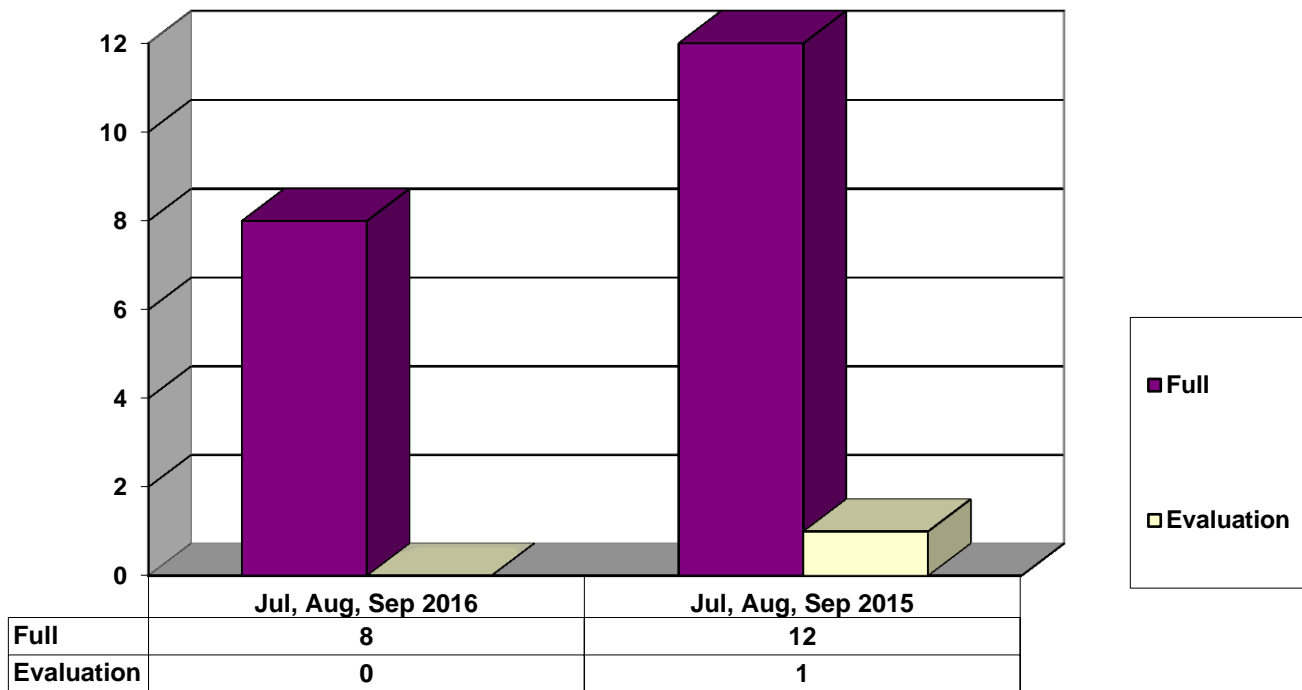


■ 12 & Under
 ■ 13 yrs
 ■ 14 yrs
 ■ 15 yrs
 ■ 16 yrs
 ■ 17 - over

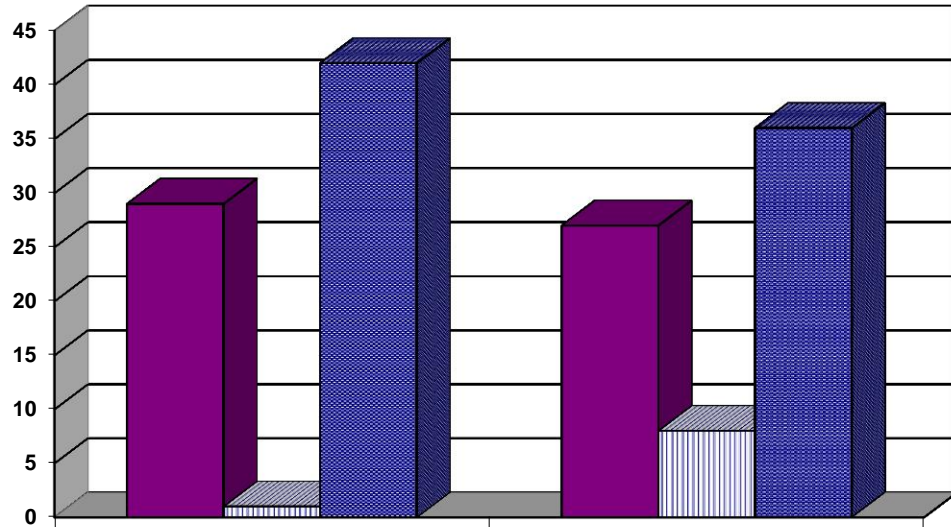
Restitution Ordered in New Juvenile Cases



Commitments to Illinois Department of Juvenile Justice



Investigations Completed by Juvenile Division



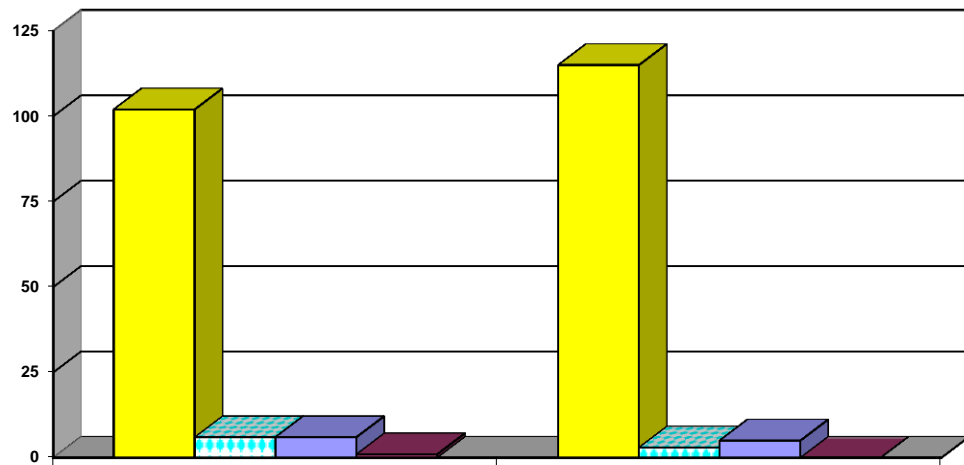
	Jul, Aug, Sep 2016	Jul, Aug, Sep 2015
Social Histories	29	27
Supplemental Social History	1	8
Remission/Review	42	36

■ Social Histories

▨ Supplemental Social History

■ Remission/Review

Juvenile Caseload at End of Reporting Periods



	September 2016	September 2015
Probation	102	115
Continued under Supervision	6	3
Informal	6	5
Other	1	0

■ Probation

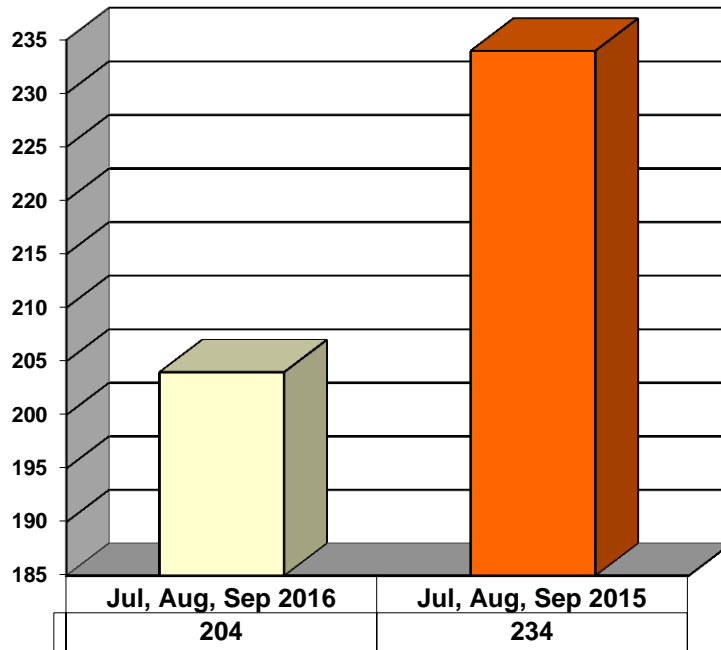
▨ Continued under Supervision

■ Informal

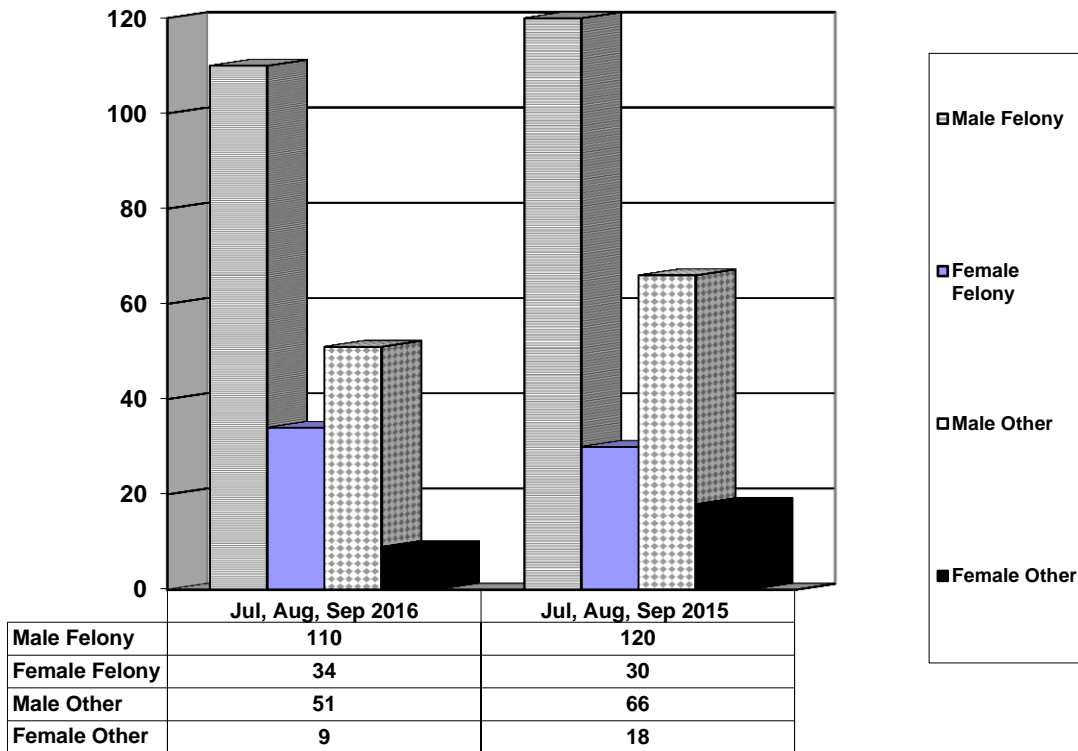
■ Other

**ADULT SUPERVISION INFORMATION
JULY, AUGUST AND SEPTEMBER 2016
(Compared to Prior Year)**

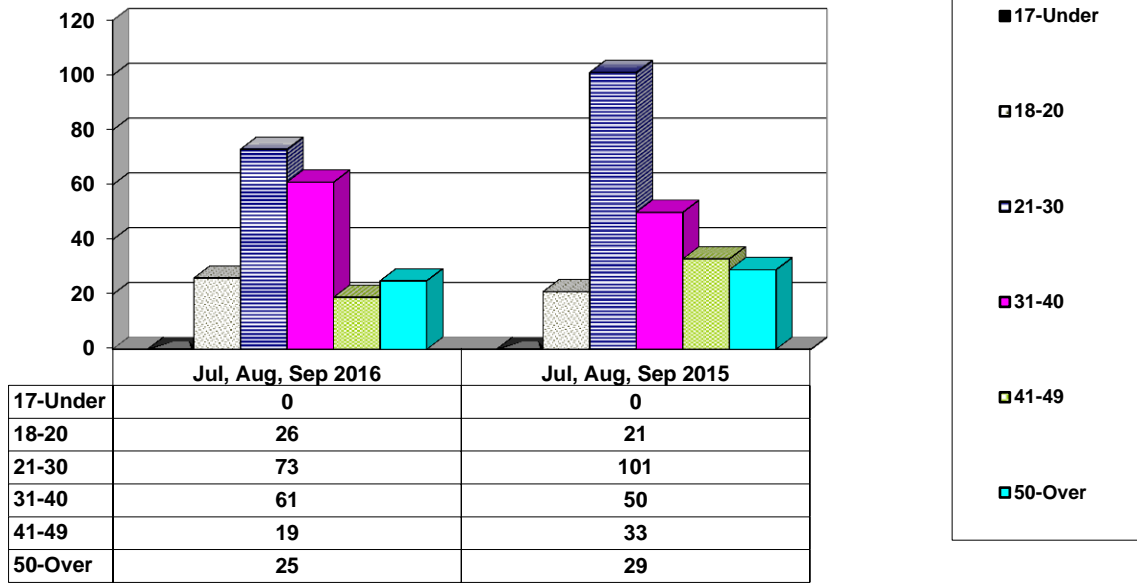
Adult Intakes Completed



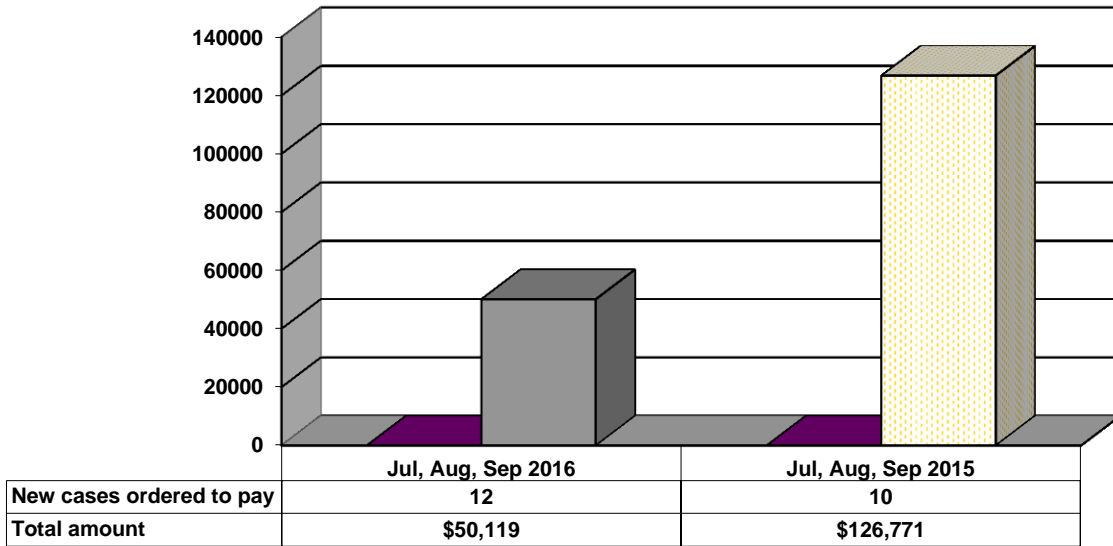
Gender Demographics for Adult Intakes



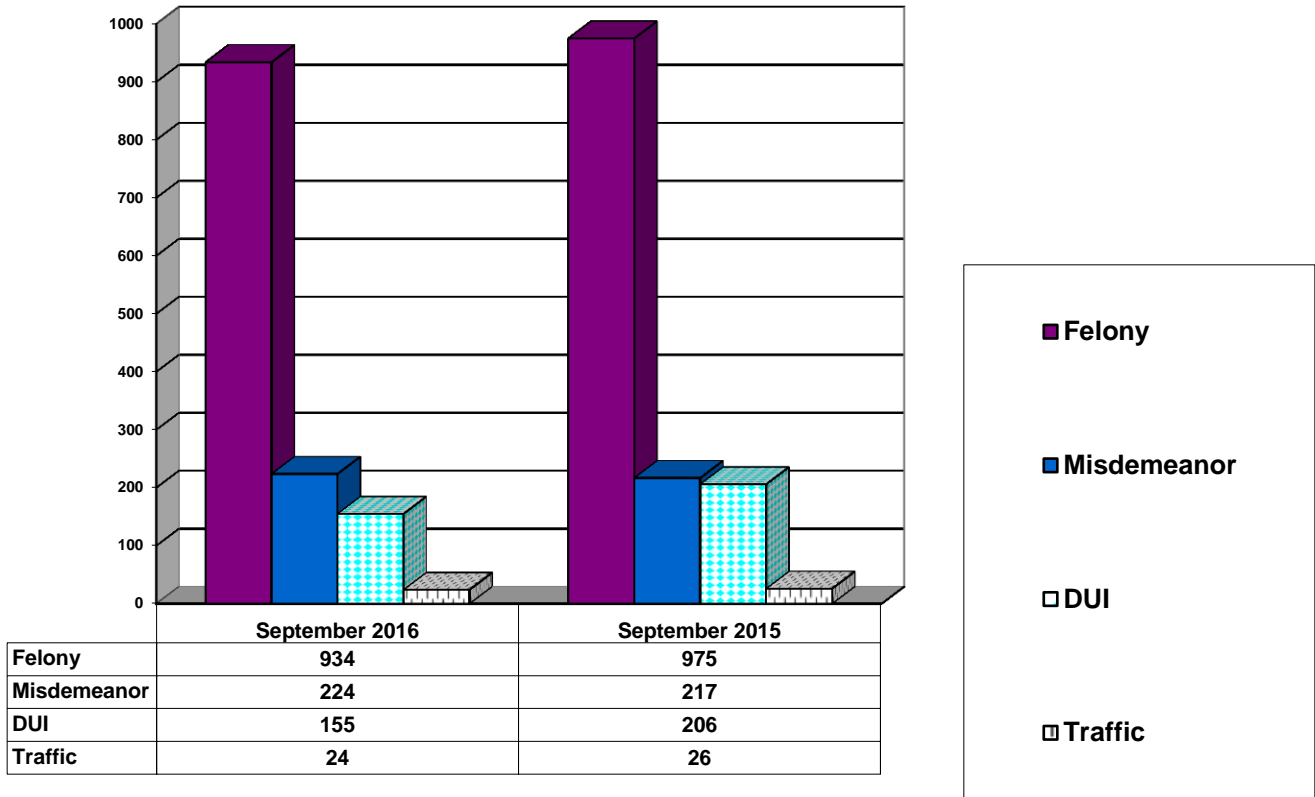
Age Demographics for Adult Intakes



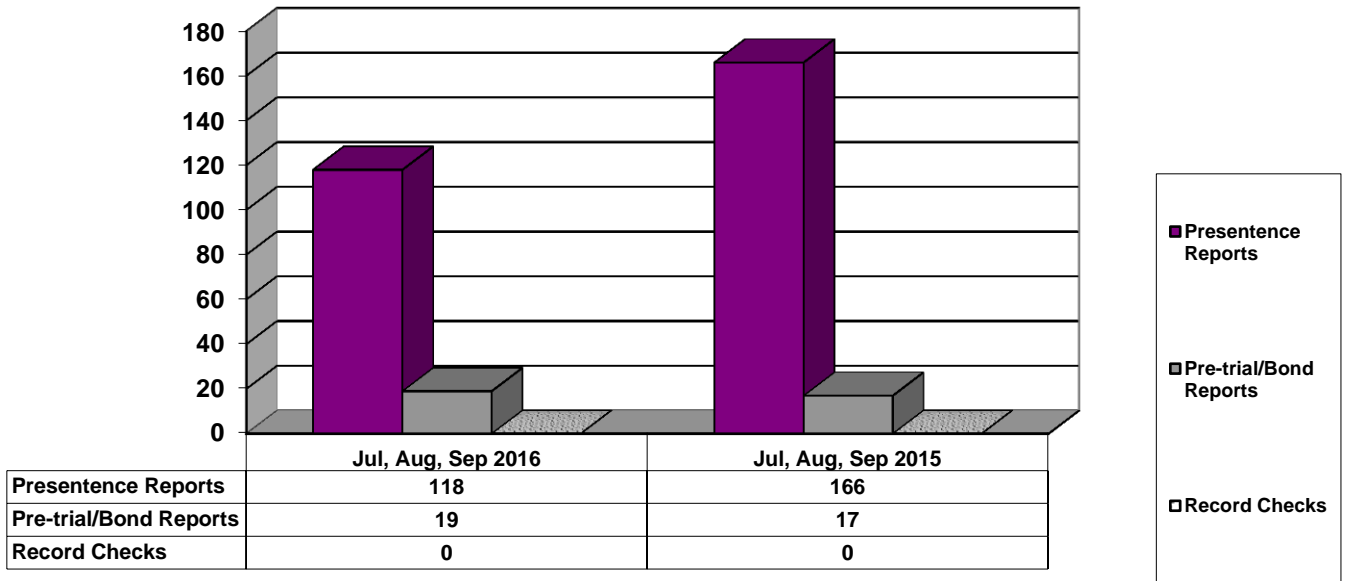
Restitution Ordered in New Adult Cases



Breakdown of Adult Caseload at End of Reporting Periods



Adult Investigations Completed



Commitments to Illinois Department of Corrections

