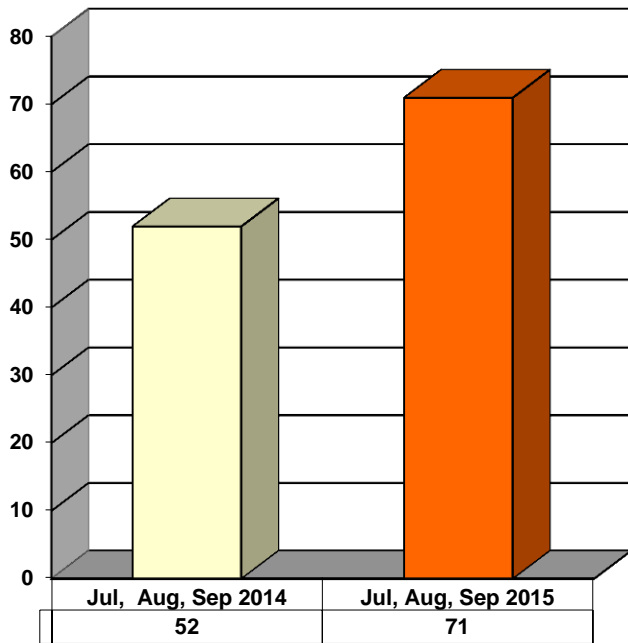
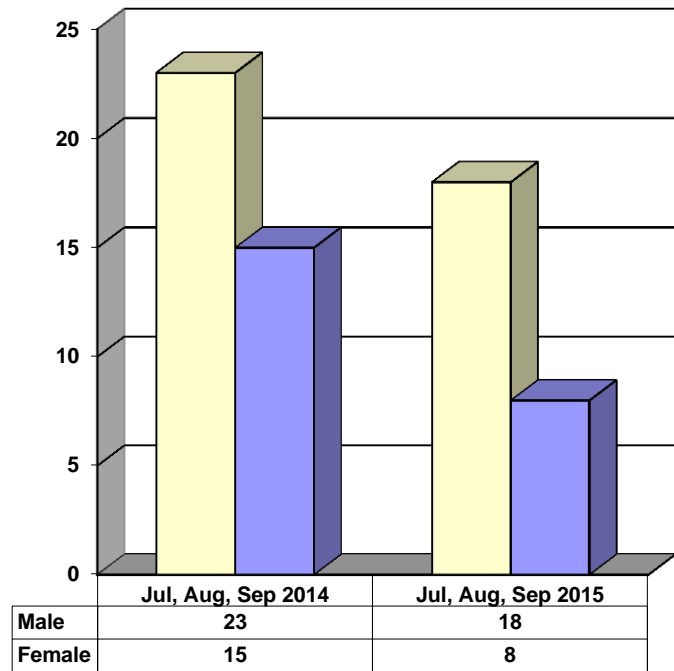


**JUVENILE SUPERVISION INFORMATION
MONTHS OF JULY, AUGUST AND SEPTEMBER 2015
(Compared to Prior Year)**

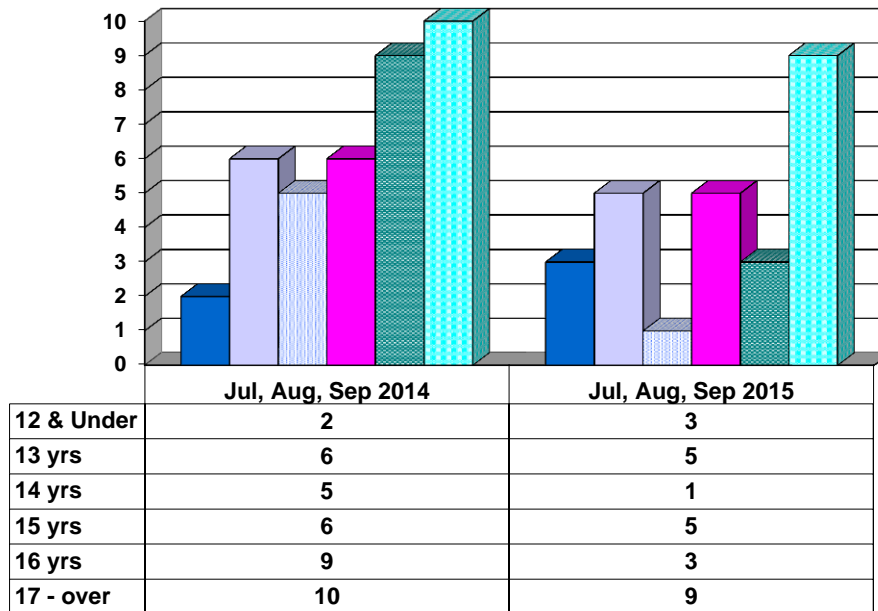
Juvenile Delinquency Petitions Filed



Demographics for Juvenile Admissions

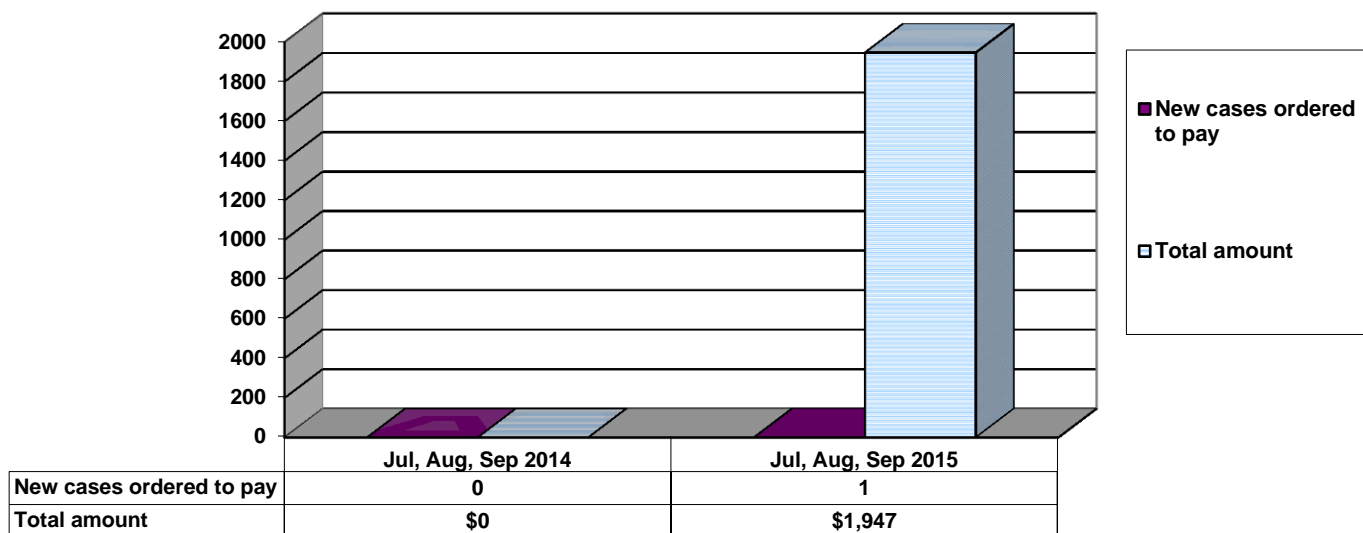


Age Demographics for Juvenile Admissions

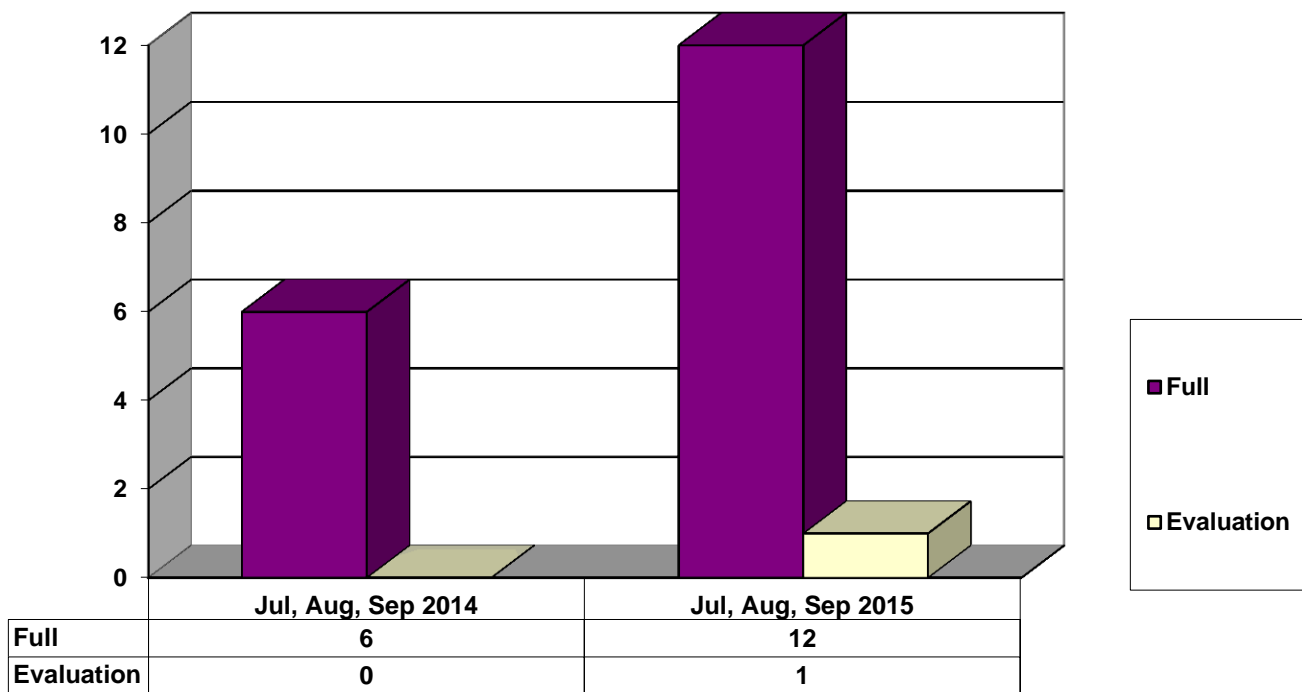


■ 12 & Under
 ■ 13 yrs
 ■ 14 yrs
 ■ 15 yrs
 ■ 16 yrs
 ■ 17 - over

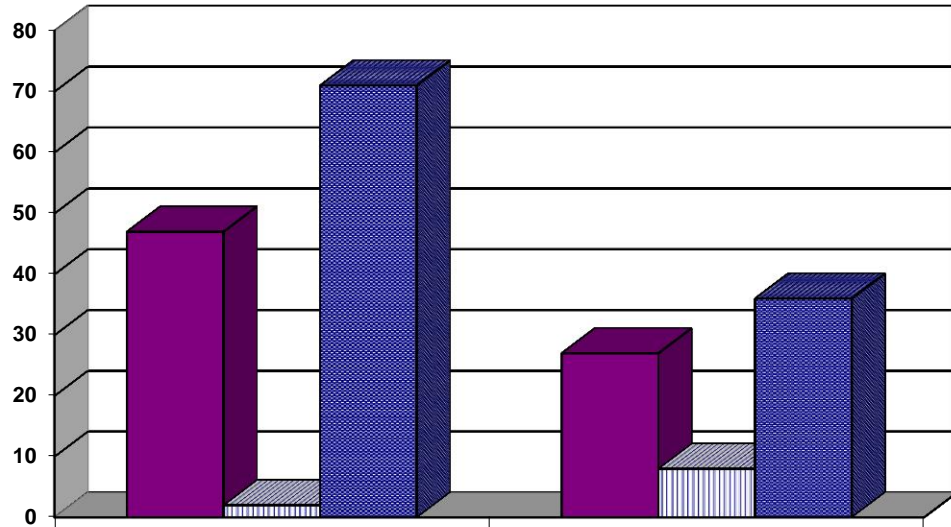
Restitution Ordered in New Juvenile Cases



Commitments to IDOJJ (Illinois Department of Juvenile Justice)



Investigations Completed by Juvenile Unit



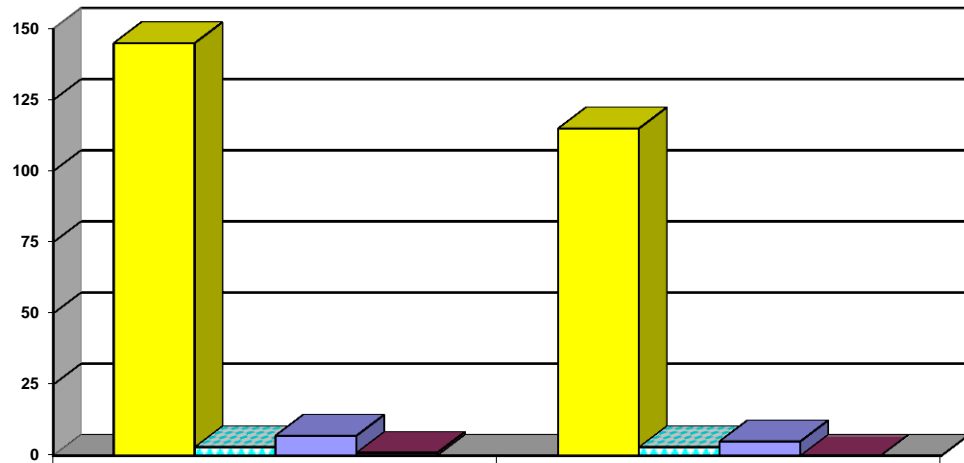
	Jul, Aug, Sep 2014	Jul, Aug, Sep 2015
Social Histories	47	27
Supplemental Social History	2	8
Remission/Review	71	36

■ Social Histories

▨ Supplemental Social History

■ Remission/Review

Juvenile Caseload at End of Reporting Periods



	September 2014	September 2015
Probation	145	115
Continued under Supervision	3	3
Informal	7	5
Other	1	0

■ Probation

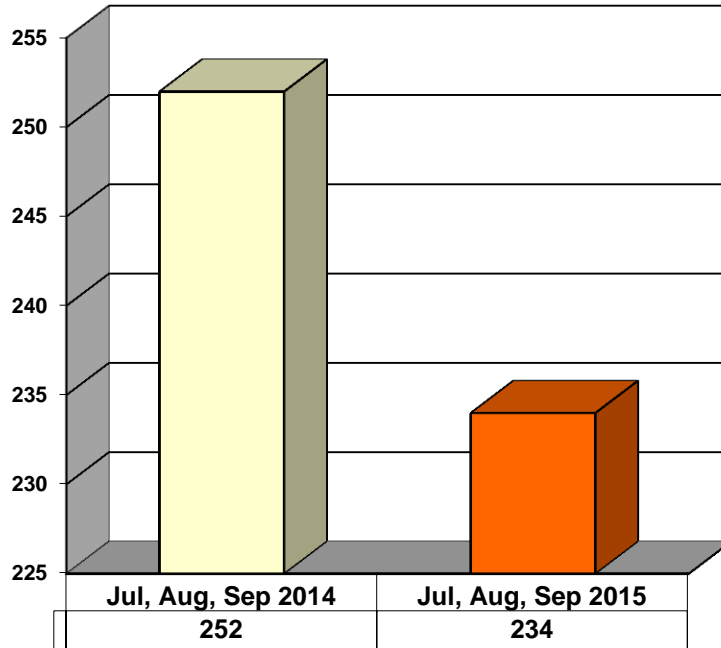
▨ Continued under Supervision

■ Informal

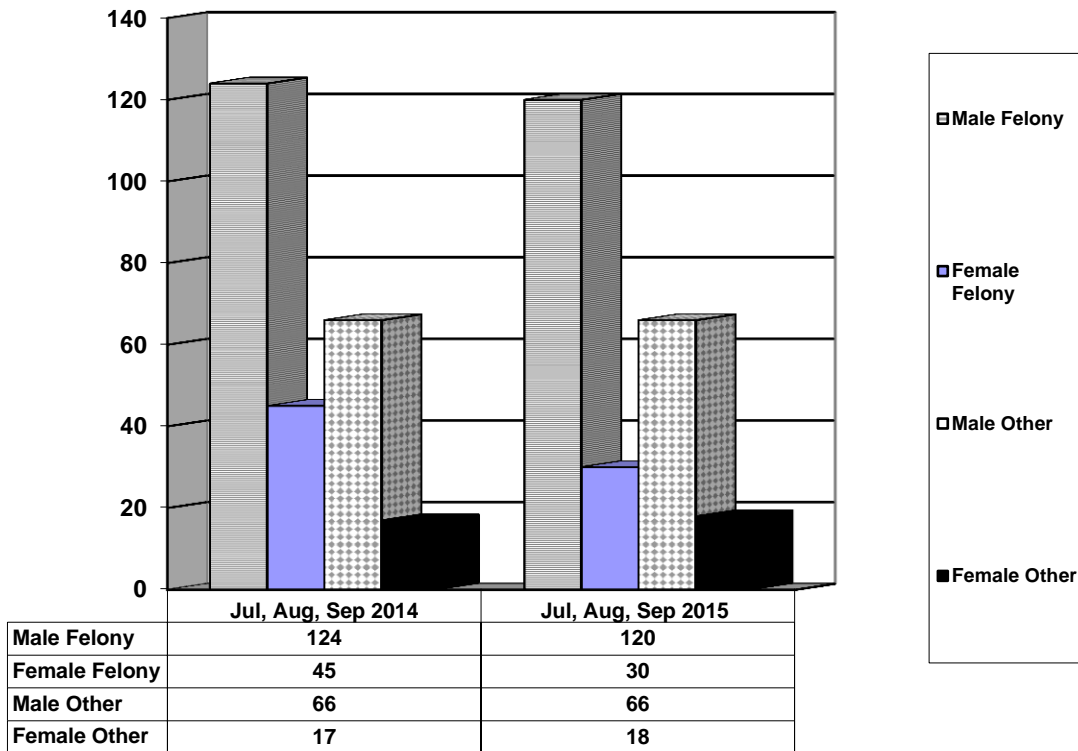
■ Other

**ADULT SUPERVISION INFORMATION
JULY, AUGUST AND SEPTEMBER 2015
(Compared to Prior Year)**

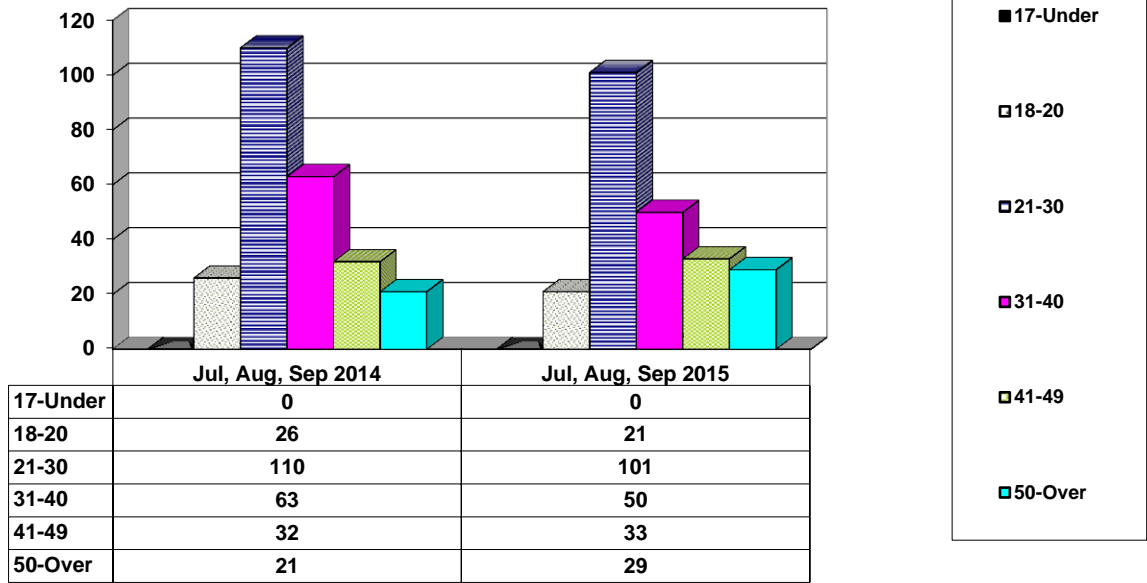
Adult Intakes Completed



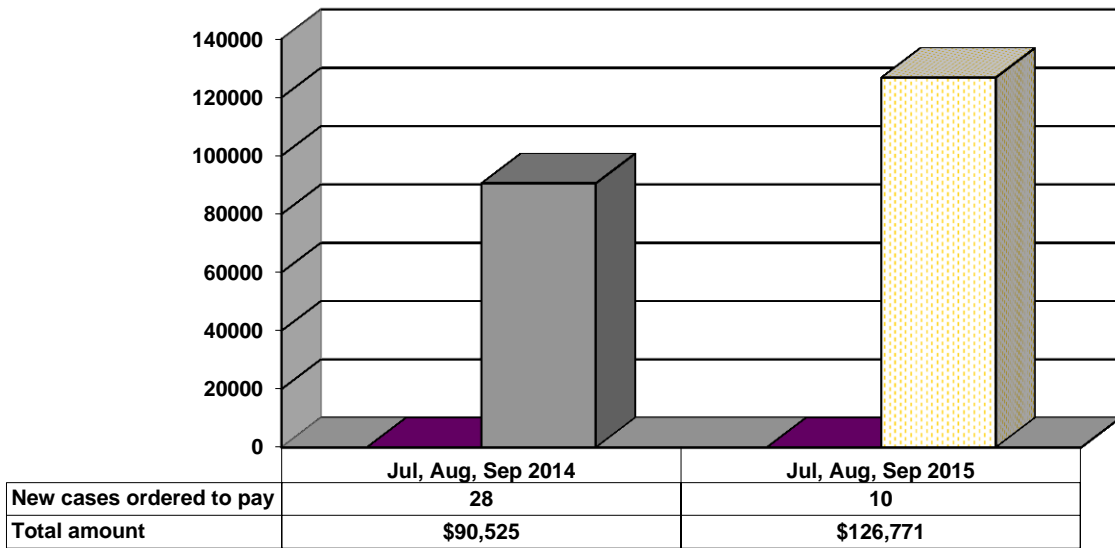
Demographics for Adult Intakes



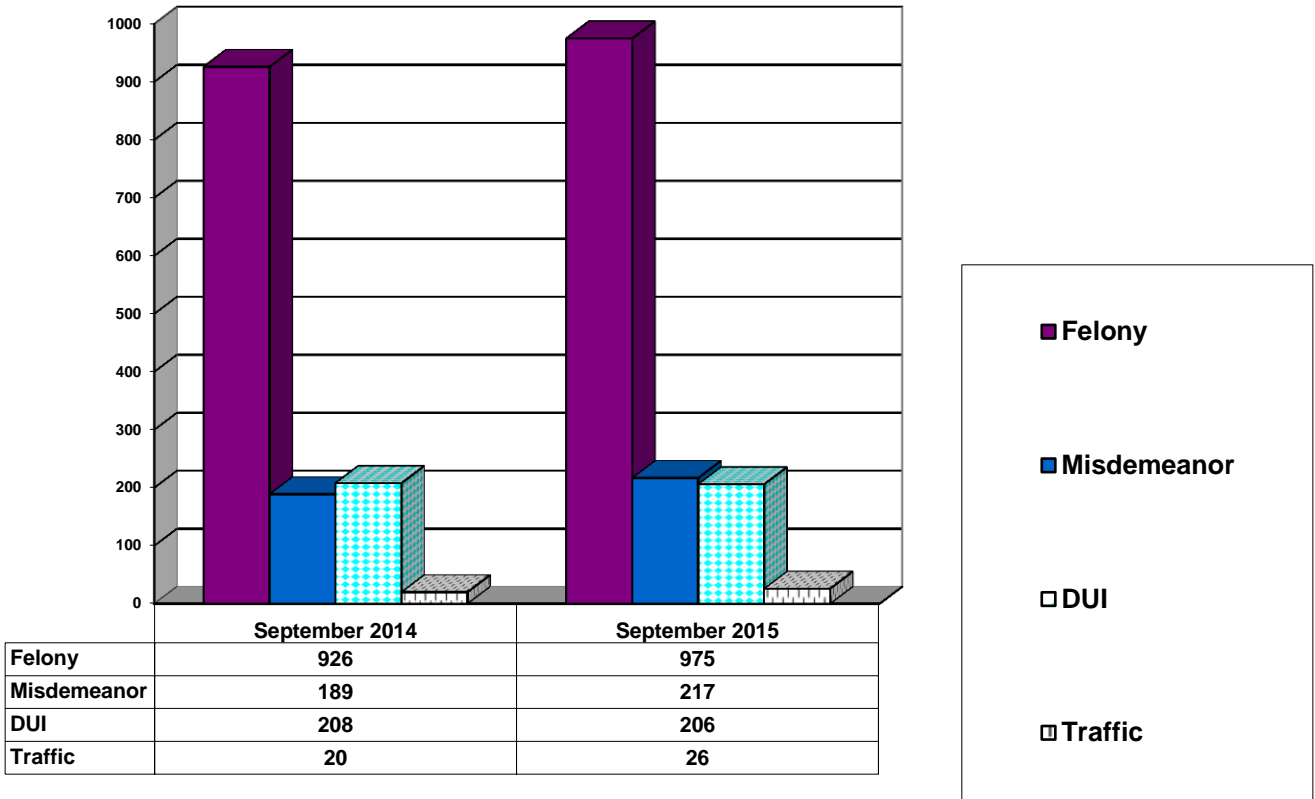
Age Demographics for Adult Intakes



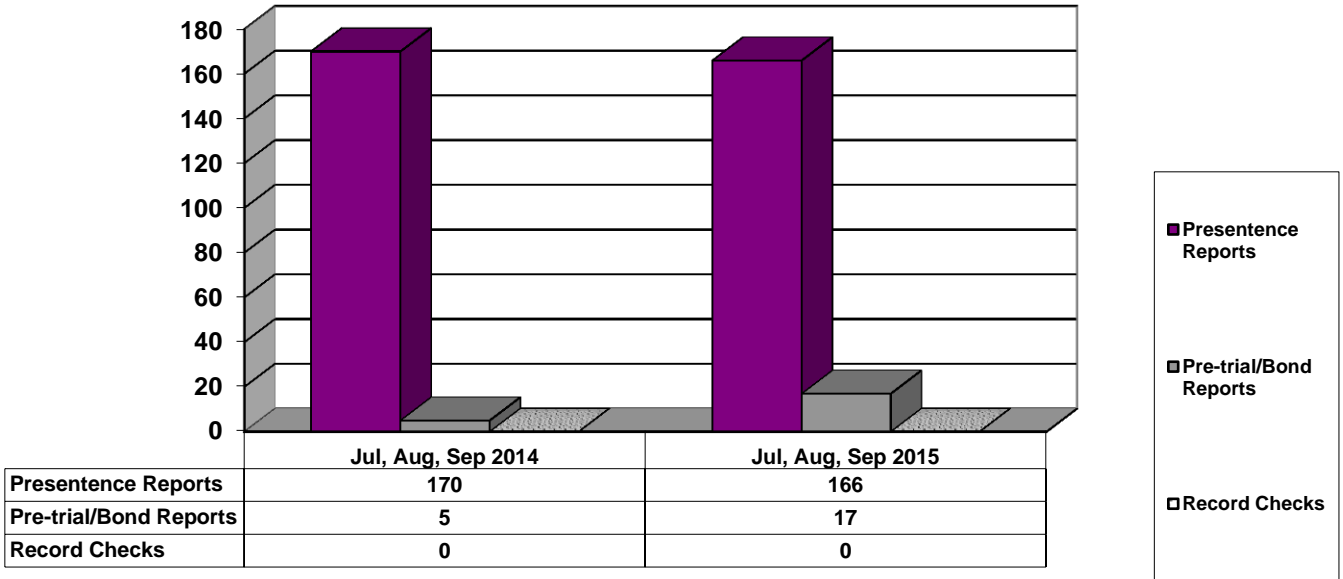
Restitution Ordered in New Adult Cases



Breakdown of Adult Caseload at End of Reporting Periods



Adult Investigations Completed



**Commitments to DOC
(Illinois Department of Corrections)**

