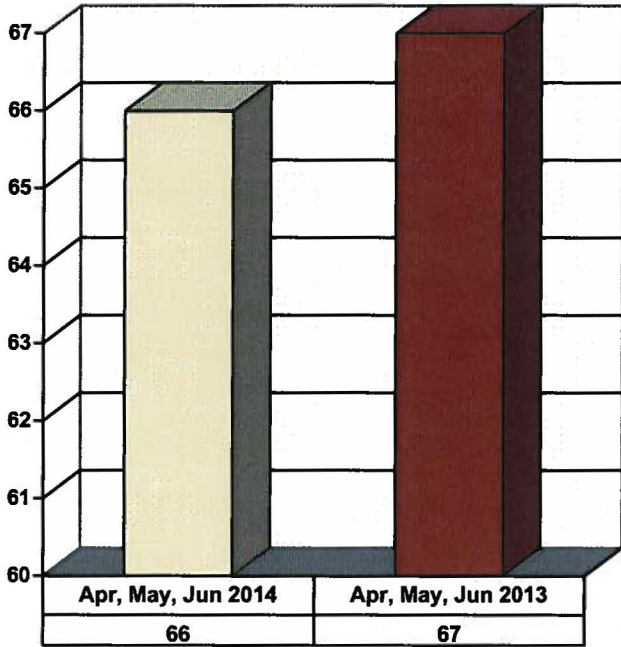
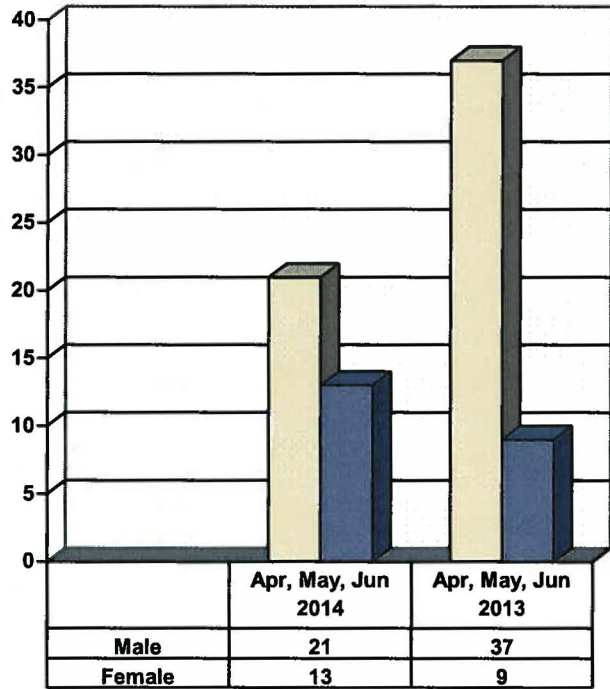


**JUVENILE SUPERVISION INFORMATION
APRIL, MAY AND JUNE 2014
(Compared to Prior Year)**

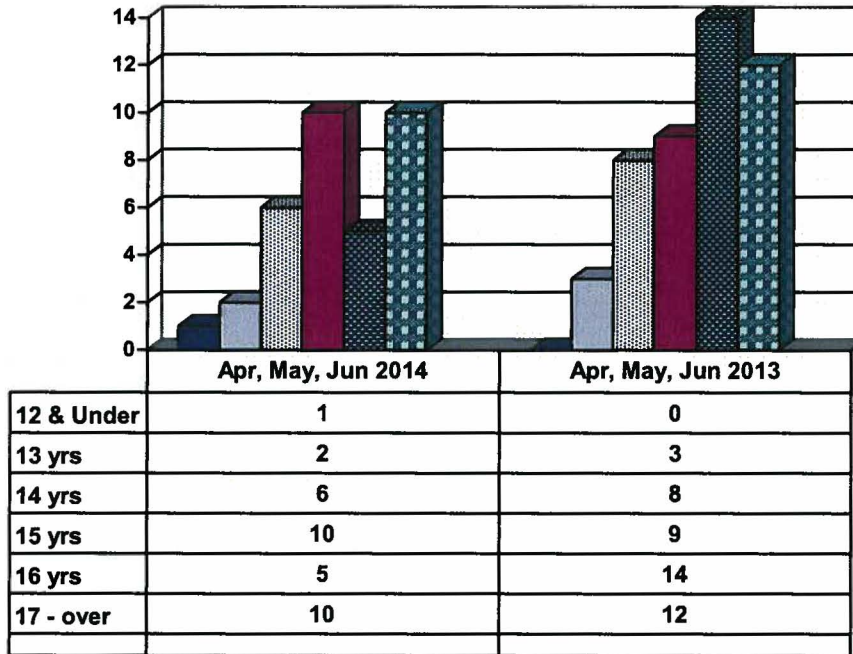
Juvenile Delinquency Petitions Filed



Demographics for Juvenile Admissions

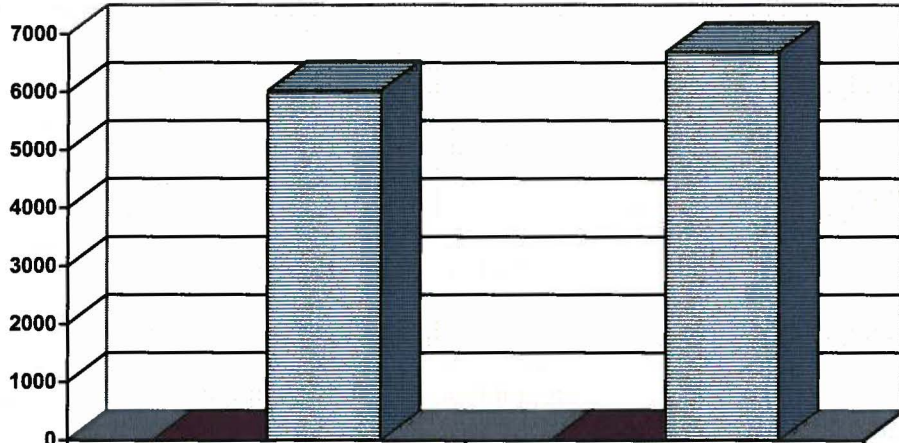


Age Demographics for Juvenile Admissions



12 & Under
 13 yrs
 14 yrs
 15 yrs
 16 yrs
 17 - over

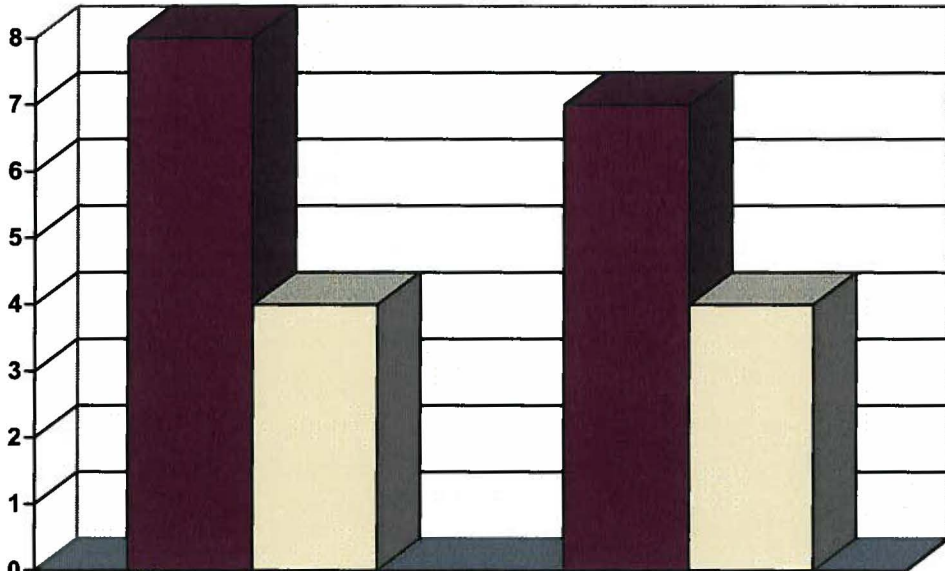
Restitution Ordered in New Juvenile Cases



■ New cases ordered to pay
■ Total amount

	Apr, May, Jun 2014	Apr, May, Jun 2013
New cases ordered to pay	2	7
Total amount	\$6,030	\$6,697

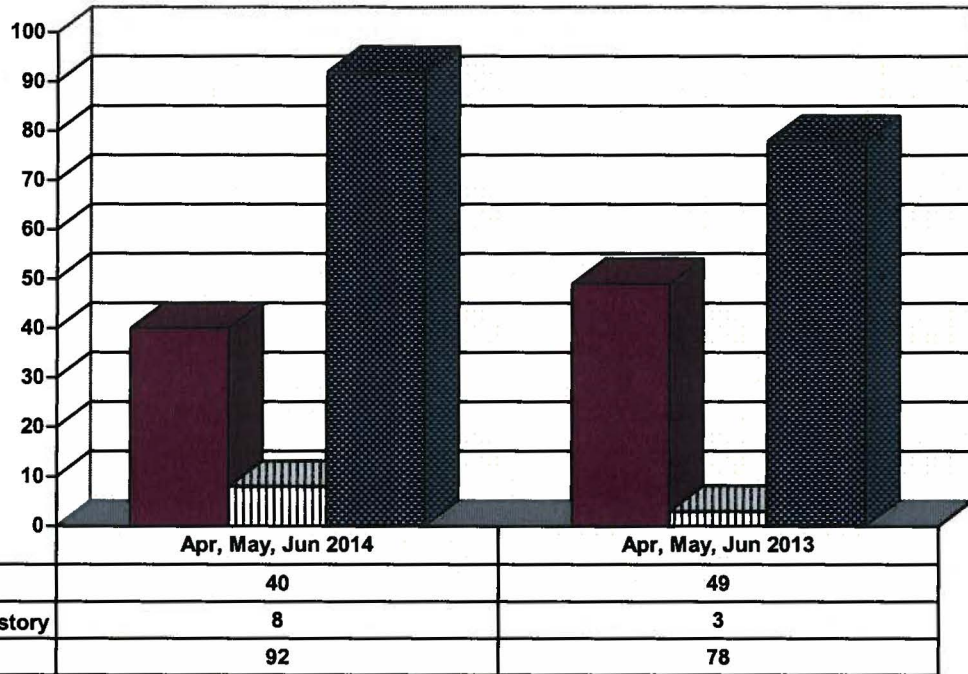
**Commitments to IDOJJ
(Illinois Department of Juvenile Justice)**



■ Full
■ Evaluation

	Apr, May, Jun 2014	Apr, May, Jun 2013
Full	8	7
Evaluation	4	4

Investigations Completed by Juvenile Unit



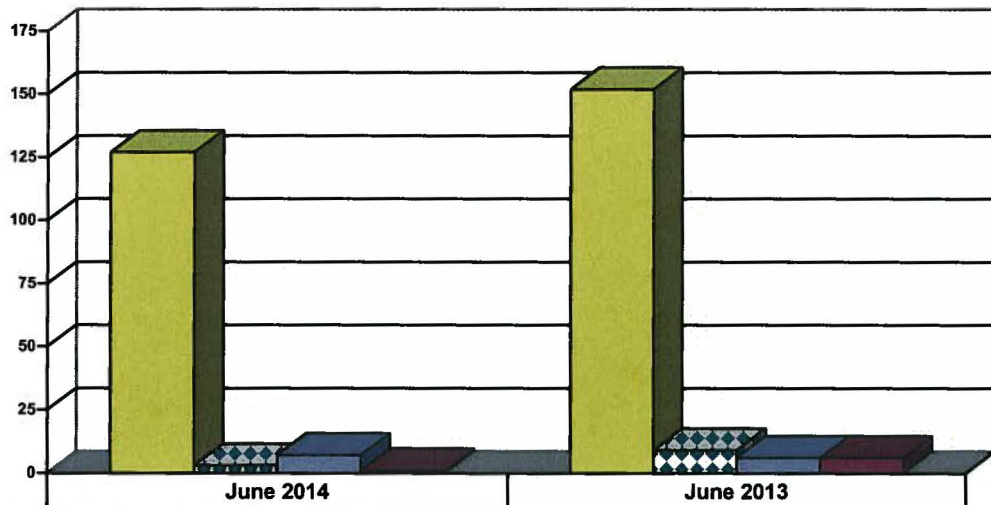
	Apr, May, Jun 2014	Apr, May, Jun 2013
Social Histories	40	49
Supplemental Social History	8	3
Remission/Review	92	78

■ Social Histories

□ Supplemental Social History

■ Remission/Review

Juvenile Caseload at End of Reporting Periods

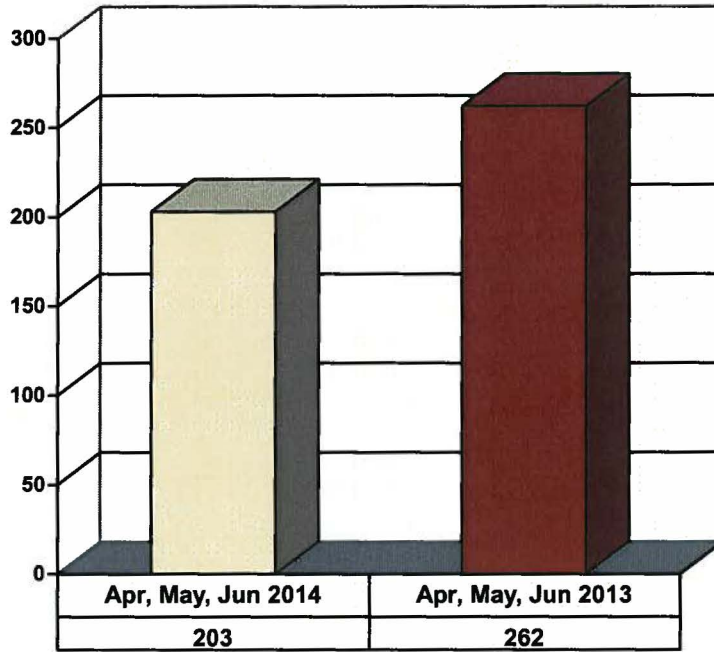


	June 2014	June 2013
Probation	127	152
Continued under Supervision	3	9
Informal	7	6
Other	1	6

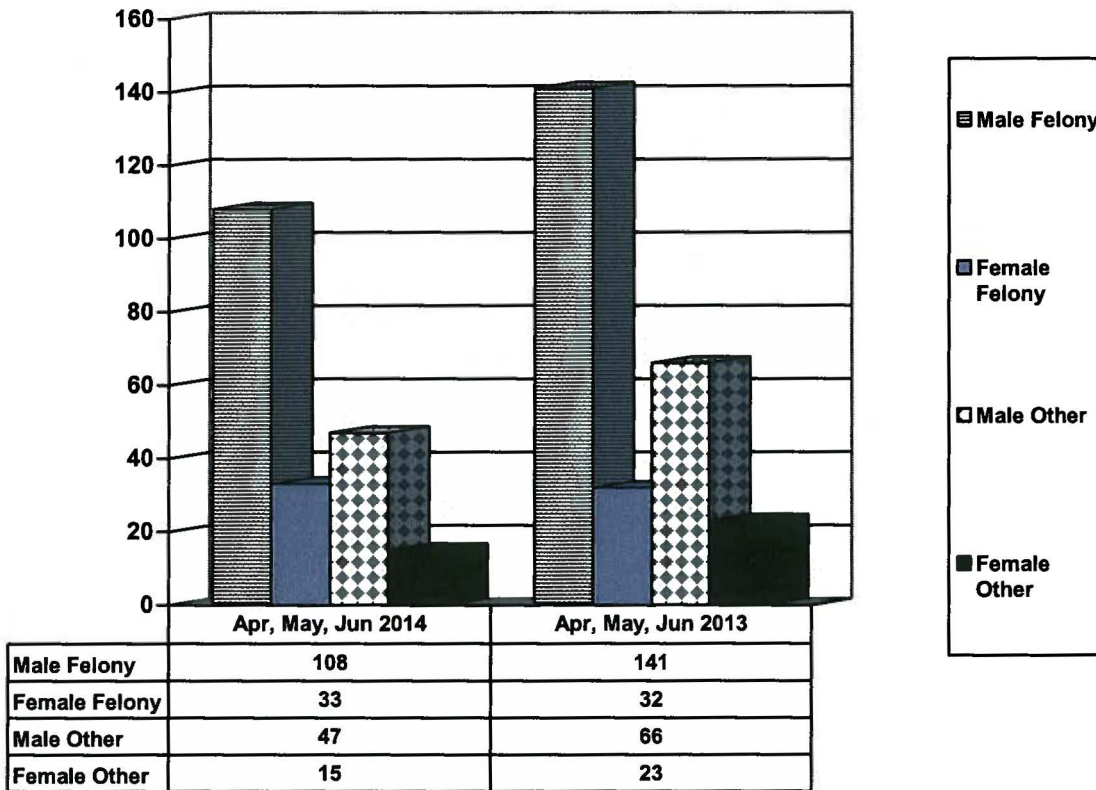
■ Probation ■ Continued under Supervision ■ Informal ■ Other

**ADULT SUPERVISION INFORMATION
APRIL, MAY AND JUNE 2014
(Compared to Prior Year)**

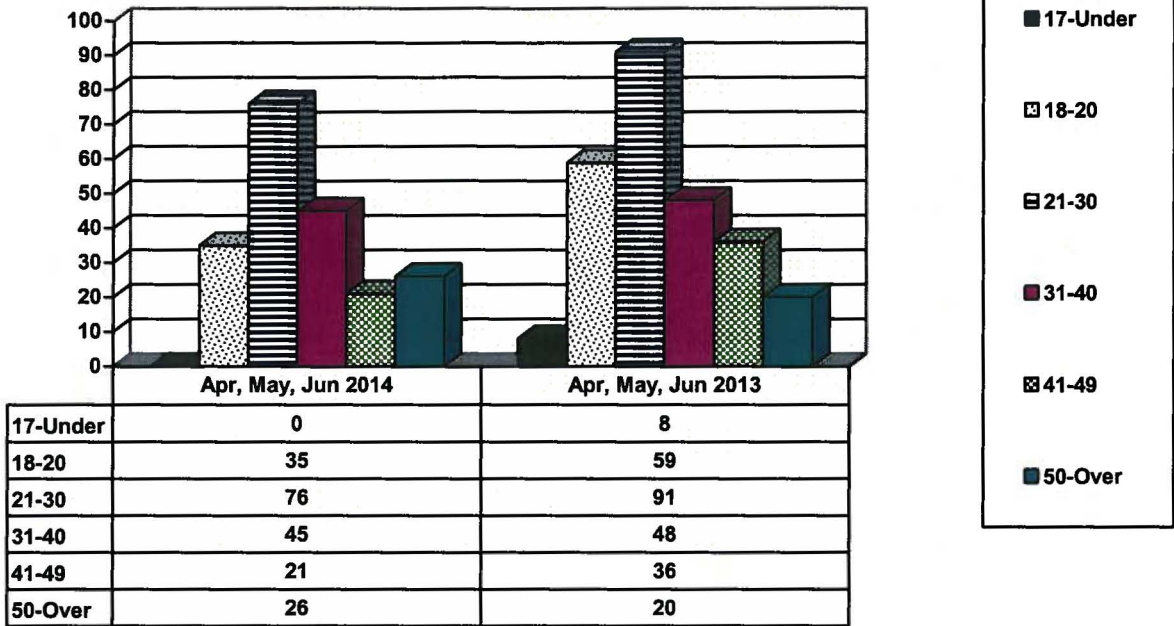
Adult Intakes Completed



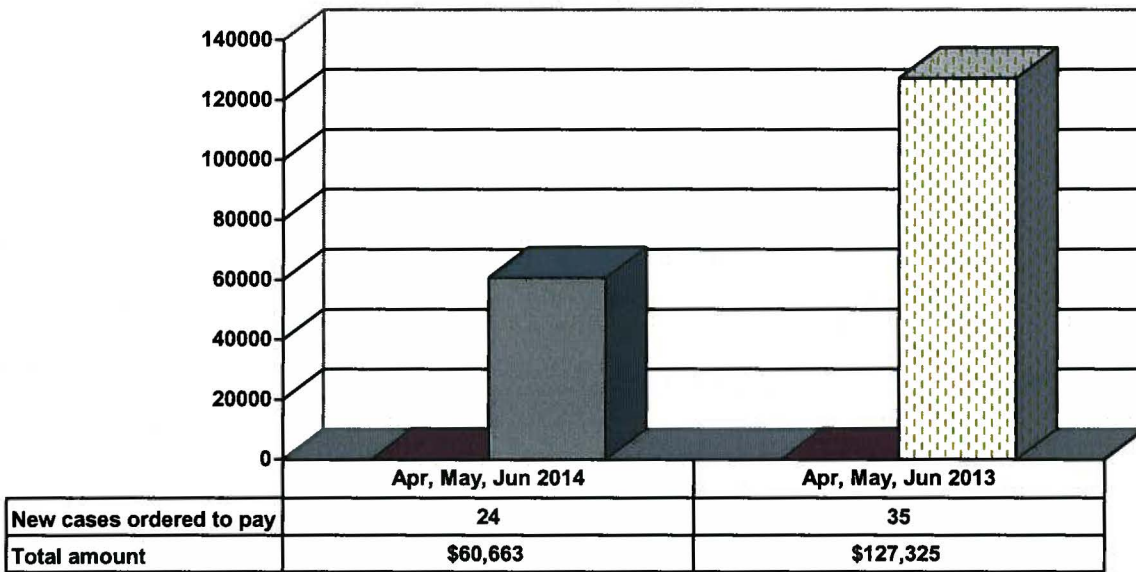
Demographics for Adult Intakes



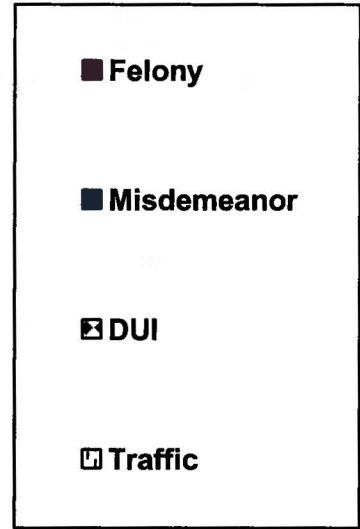
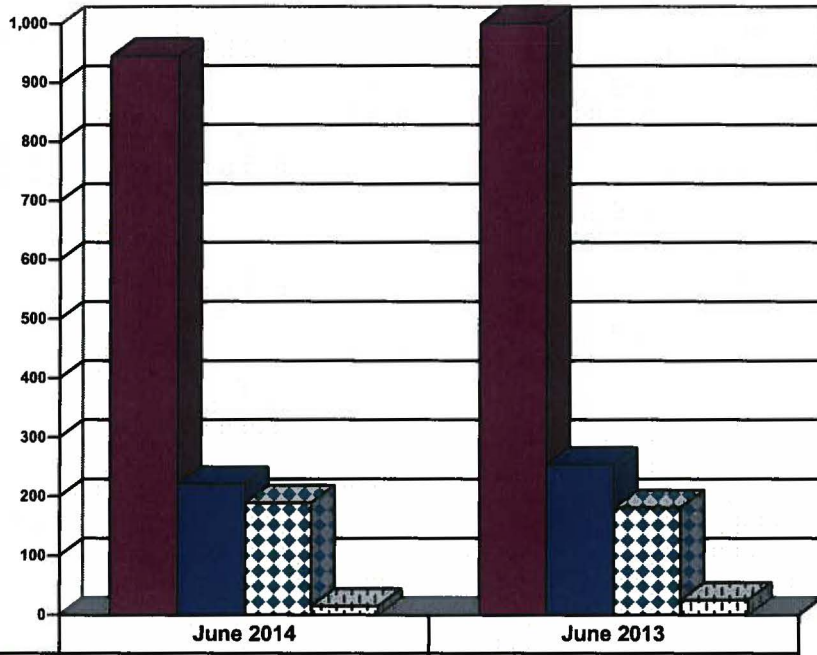
Age Demographics for Adult Intakes



Restitution Ordered in New Adult Cases

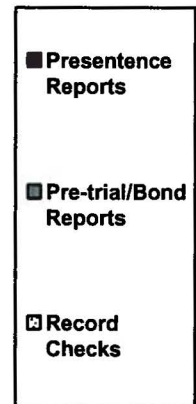
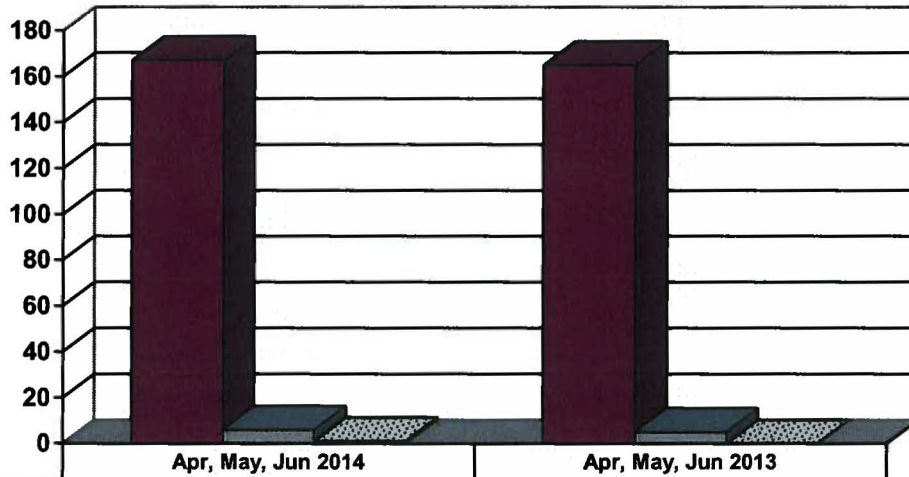


Breakdown of Adult Caseload at End of Reporting Periods



	June 2014	June 2013
Felony	945	1,000
Misdemeanor	220	253
DUI	189	181
Traffic	15	25

Adult Investigations Completed



	Apr, May, Jun 2014	Apr, May, Jun 2013
Presentence Reports	167	165
Pre-trial/Bond Reports	6	5
Record Checks	1	0

**Commitments to DOC
(Illinois Department of Corrections)**

