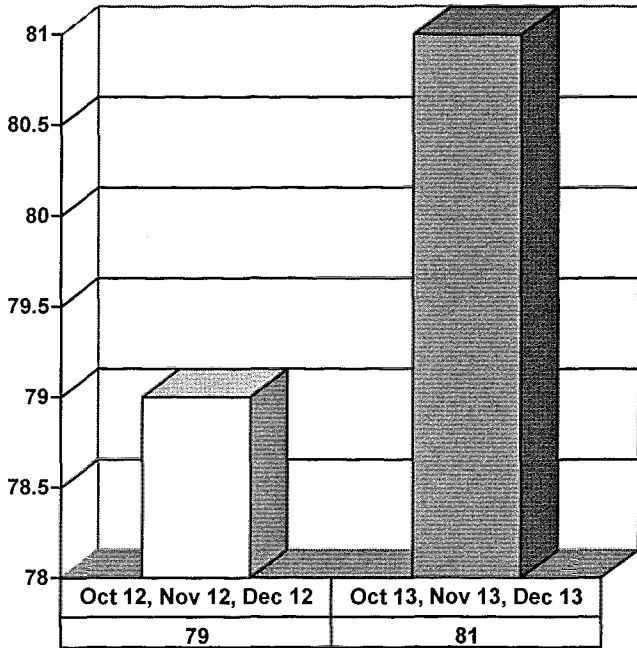
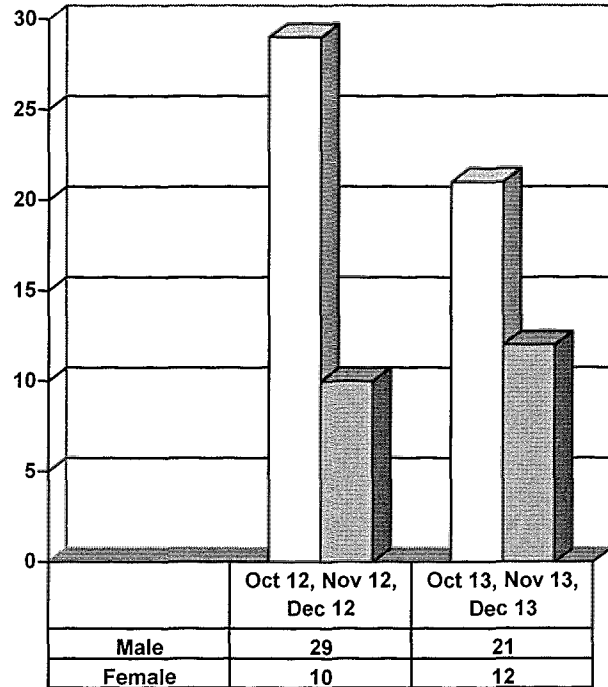


JUVENILE SUPERVISION INFORMATION
MONTHS OF OCTOBER 2013, NOVEMBER 2013 AND DECEMBER 2013
 (Compared against prior year information)

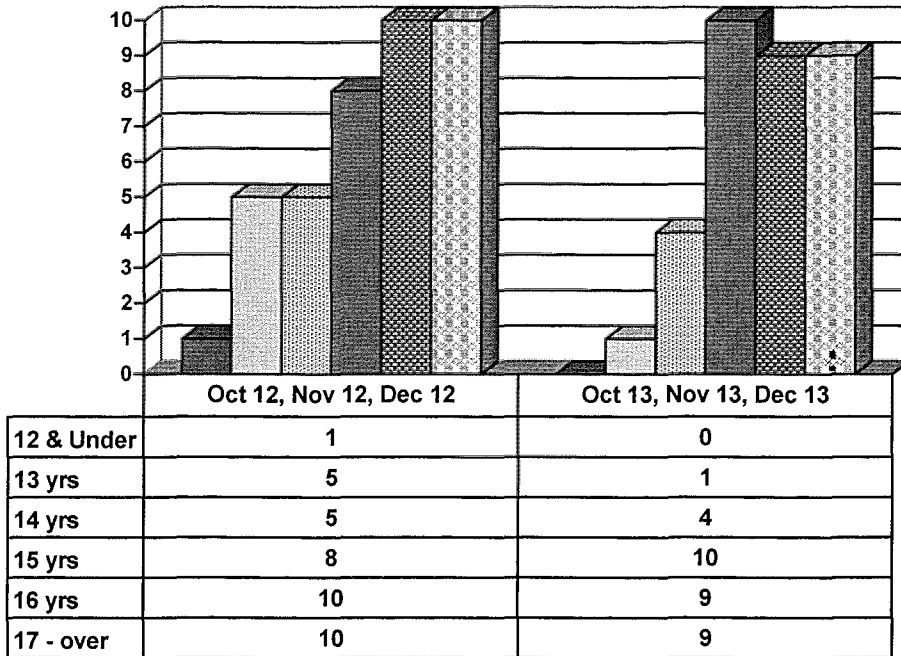
Juvenile Delinquency Petitions Filed



Demographics for Juvenile Admissions

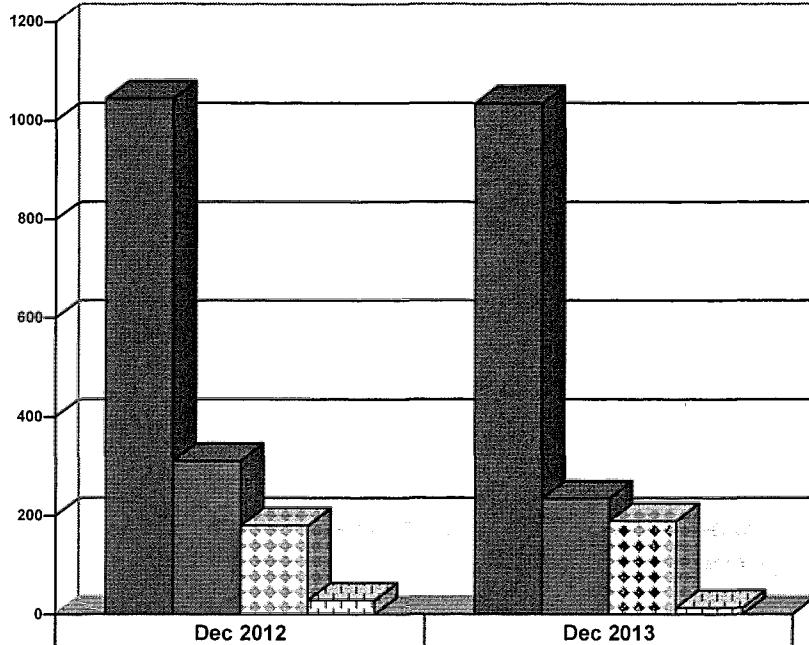


Age Demographics for Juvenile Admissions

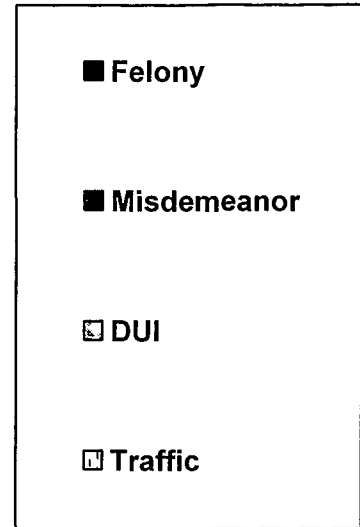


12 & Under
 13 yrs
 14 yrs
 15 yrs
 16 yrs
 17 - over

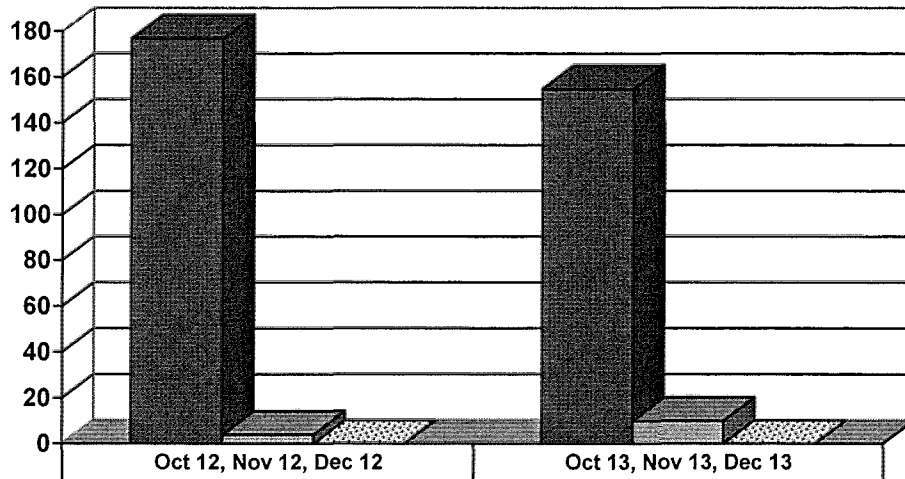
Breakdown of Adult Caseload at end of Reporting Periods



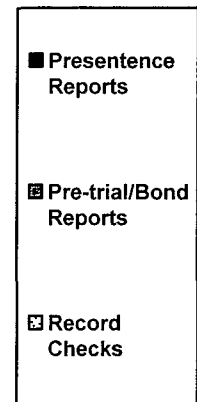
	Dec 2012	Dec 2013
Felony	1045	1035
Misdemeanor	311	235
DUI	180	189
Traffic	28	13



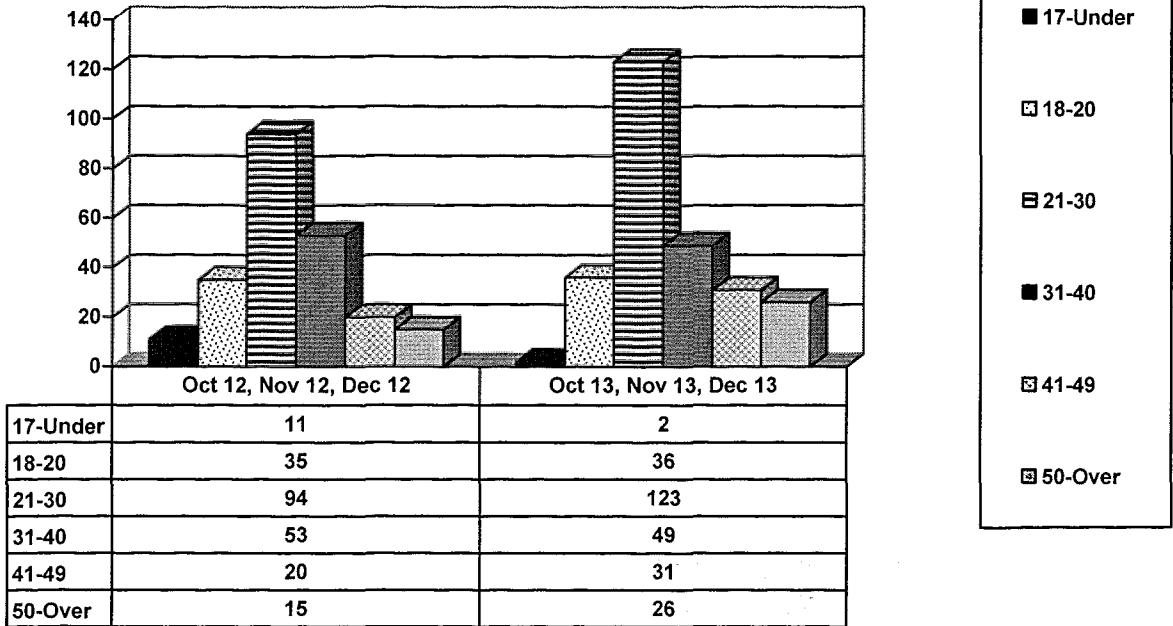
Adult Investigations Completed



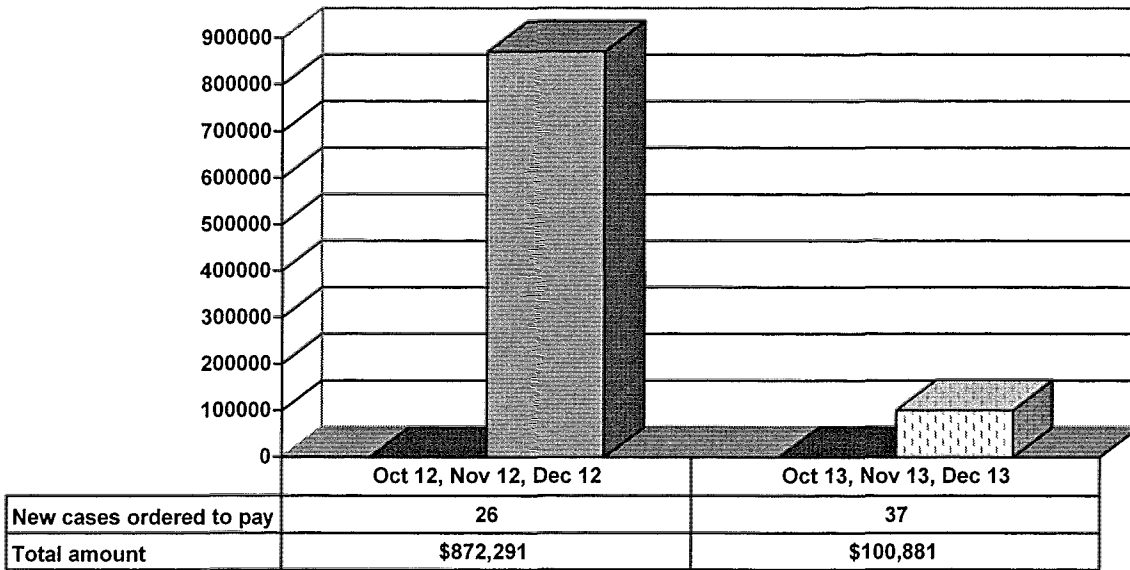
	Oct 12, Nov 12, Dec 12	Oct 13, Nov 13, Dec 13
Presentence Reports	177	155
Pre-trial/Bond Reports	4	10
Record Checks	0	0



Age Demographics for Adult Intakes

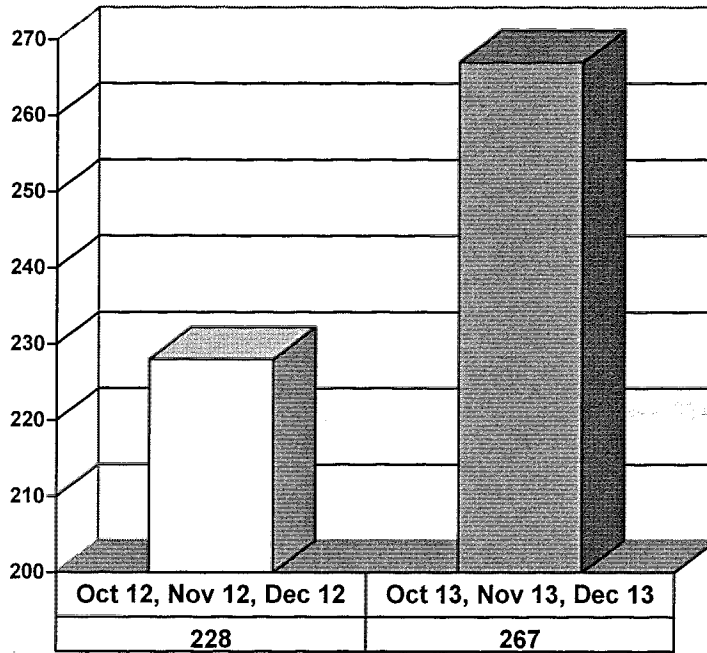


Restitution Ordered in New Adult Cases

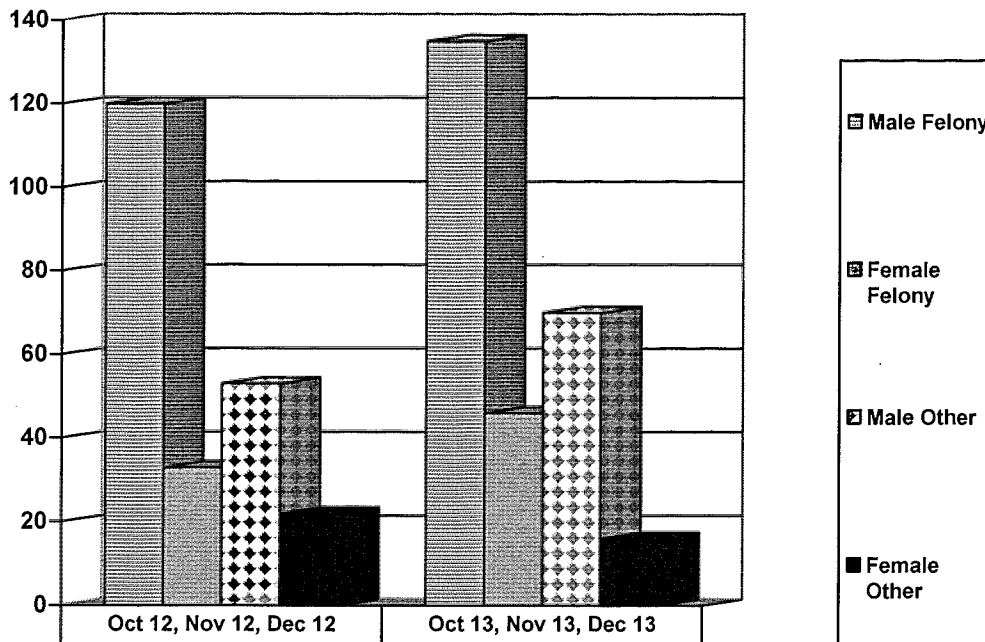


ADULT SUPERVISION INFORMATION
MONTHS OF OCTOBER 2013, NOVEMBER 2013 AND DECEMBER 2013
 (Compared against prior year information)

Adult Intakes Completed

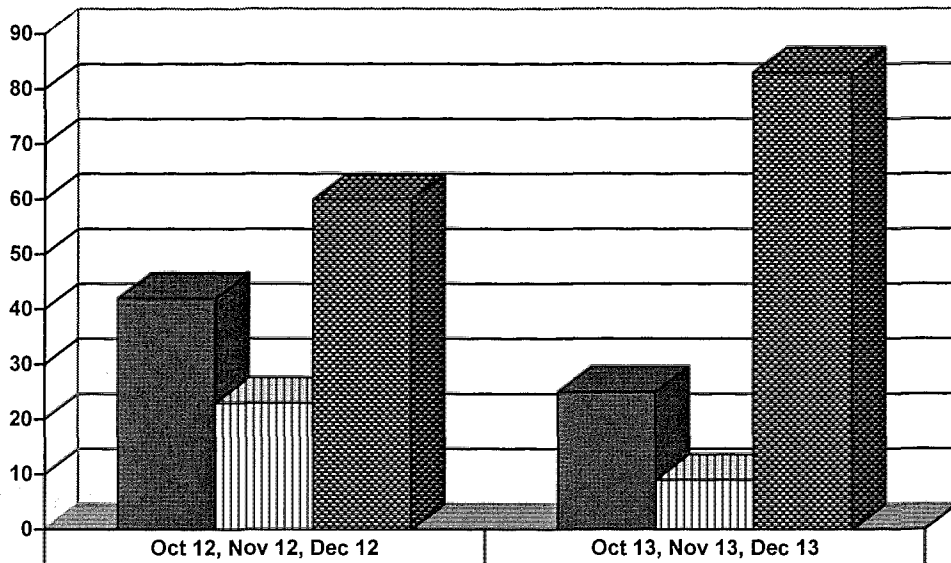


Demographics for Adult Intakes



	Oct 12, Nov 12, Dec 12	Oct 13, Nov 13, Dec 13
Male Felony	120	135
Female Felony	33	46
Male Other	53	70
Female Other	22	16

Investigations Completed by Juvenile Unit



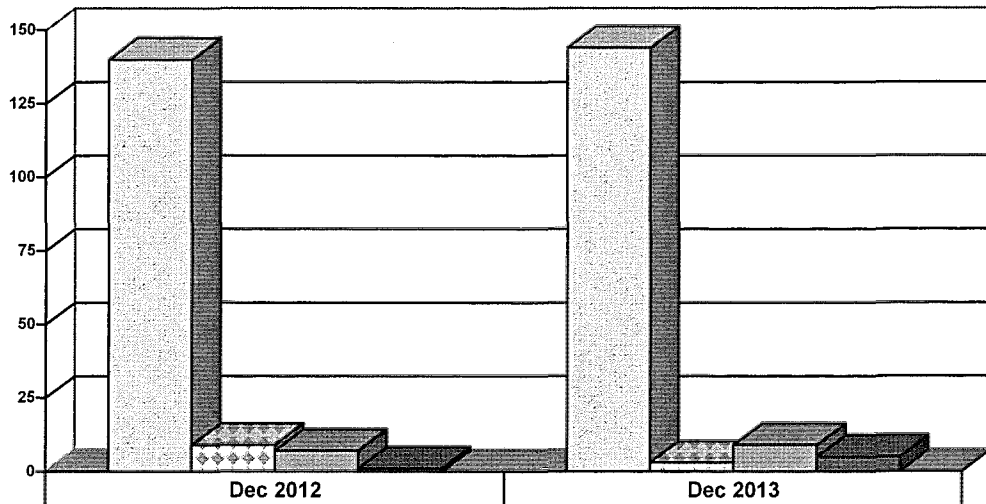
	Oct 12, Nov 12, Dec 12	Oct 13, Nov 13, Dec 13
Social Histories	42	25
Supplemental Social History	23	9
Remission/Review	60	83

■ Social Histories

▨ Supplemental Social History

▩ Remission/Review

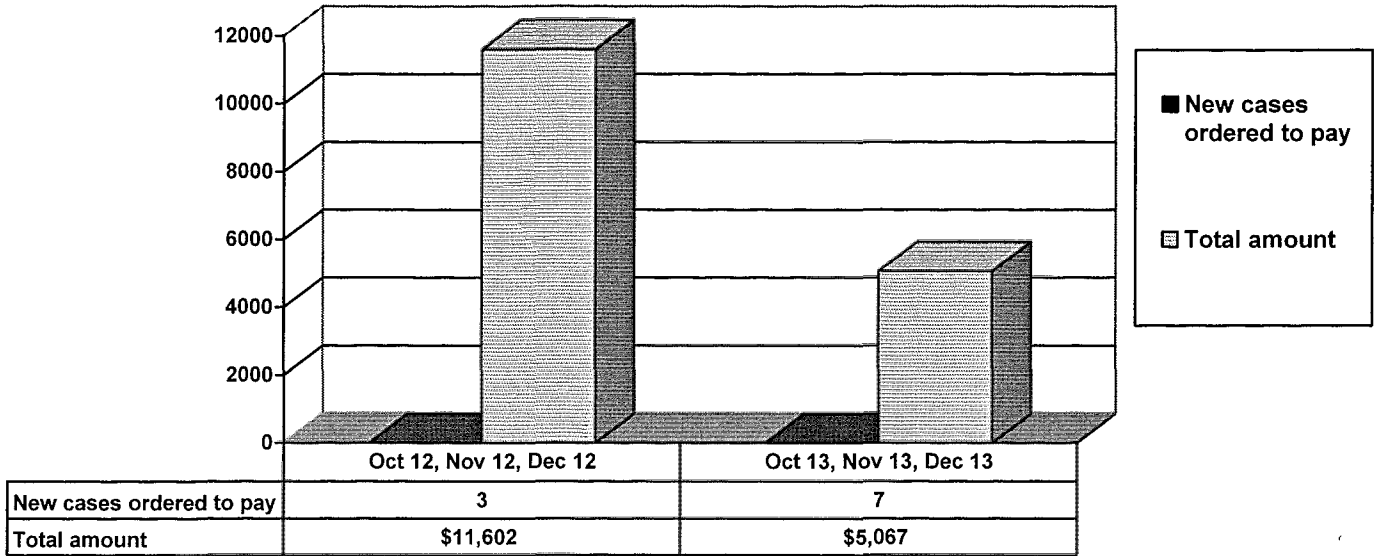
Juvenile Caseload at end of Dec 2013 compared to Dec 2012



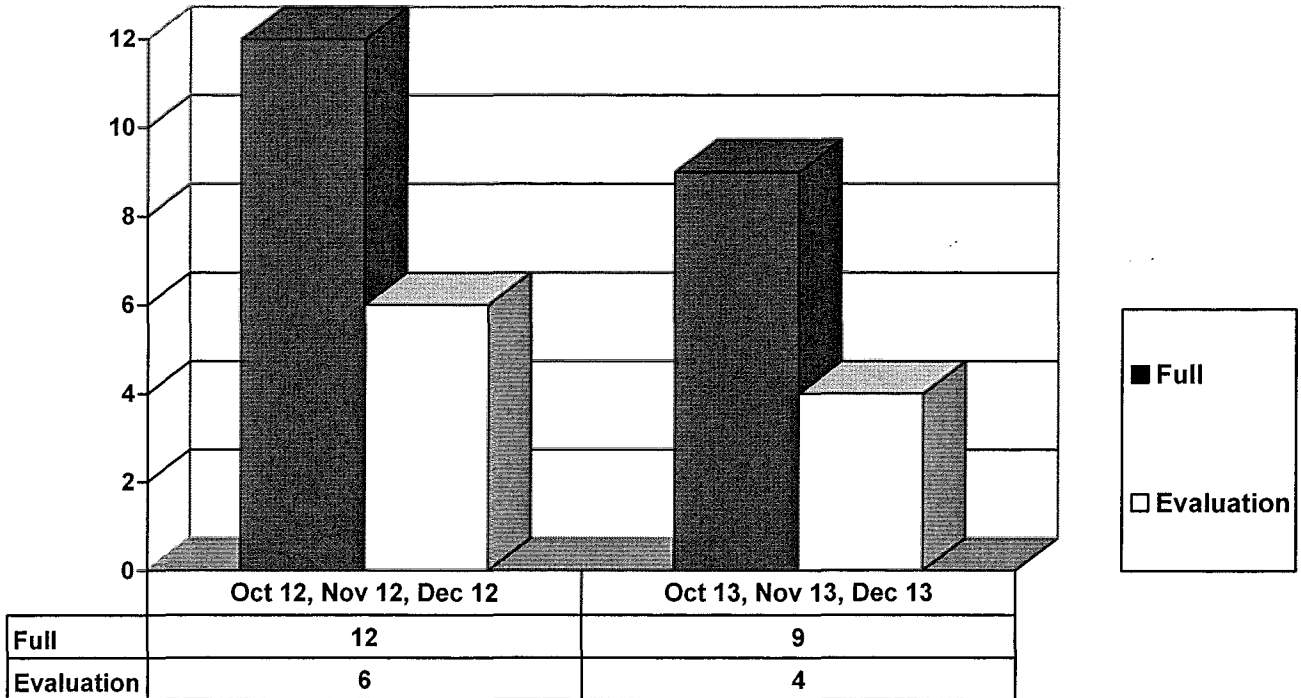
	Dec 2012	Dec 2013
Probation	140	144
Continued under Supervision	9	3
Informal	7	9
Other	1	5

□ Probation ▩ Continued under Supervision ▨ Informal ■ Other

Restitution Ordered in New Juvenile Cases



Commitments to IDOJJ (Illinois Dept. of Juvenile Justice)



**Commitments to DOC
(Illinois Dept. of Corrections)**

