



## CHAMPAIGN COUNTY MENTAL HEALTH BOARD

---

### CHAMPAIGN COUNTY BOARD FOR CARE AND TREATMENT OF PERSONS WITH A DEVELOPMENTAL DISABILITY

#### Champaign County Mental Health Board (CCMHB)

WEDNESDAY, MAY 18, 2011

Brookens Administrative Building  
Lyle Shields Meeting Room  
1776 E. Washington St., Urbana, IL

4:30 p.m.

---

1. Call to Order - Deborah Townsend, President
2. Roll Call
3. Citizen Input
4. CCDDDB Information
5. Approval of CCMHB Minutes
  - A. 4/20/11 Board meeting\*  
*Minutes are included in the packet. Action is requested.*
6. President's Comments
7. Executive Director's Comments
8. Staff Reports  
*Staff Reports from Mark Driscoll and Lynn Canfield are included in the Board packet.*
9. Board to Board Reports
10. Agency Information
11. Financial Information
  - A. Acceptance of Claims Reports\*  
*Included in the Board packet. Action is requested.*

12. New Business
  - A. FY 2012 Allocation Decisions\*  
*A Decision Memorandum is included in the packet. Action is requested.*
  
13. Old Business
  - A. Anti-Stigma Alliance Event Wrap-Up
  - B. Developmental Disabilities Expo Update  
*A report from Barb Bressner is included in the packet.*
  
14. Board Announcements
  
15. Adjournment

*\*Board action*

5.A.

---

**CHAMPAIGN COUNTY MENTAL HEALTH BOARD  
MONTHLY BOARD MEETING**

*Minutes—April 20, 2011*

*Brookens Administrative Building  
Lyle Shields Room  
1776 E. Washington St.  
Urbana, IL*

*4:30 p.m.*

---

**MEMBERS PRESENT:** Jan Anderson, Aillinn Dannave, Bill Gleason, Ernie Gullerud, Deloris Henry, Mike McClellan, Mary Ann Midden, Thom Moore, Deborah Townsend

**STAFF PRESENT:** Peter Tracy, Executive Director; Lynn Canfield, Nancy Crawford, Mark Driscoll, Shawn Lampkins, Tracy Parsons, Jonte Rollins, Karen Simms, Shandra Summerville

**STAFF EXCUSED:** Stephanie Howard-Gallo, Adrienne Spires, Julia Thomas

**OTHERS PRESENT:** Andre Arrington, Deborah McFarland, Don Moyer Boys & Girls Club (DMBGC); Sheila Ferguson, Juli Kartel, Community Elements; Mary Vita Rosmarino, Mahomet Area Youth Club (MAYC); Dale Morrissey, Laura Bennett, Felecia Gooler, Vicki Tolf, Developmental Services Center (DSC); Bruce Suardini, Lona Noonan, Lisa Snider, Ruth Newman, Prairie Center Health Systems (PCHS); Hope Malik, Melissa Neely, ACCESS Initiative; Ann Russell, NAMI; Walt Blumenshine, GROW; Patricia Avery, C-U Area Project; Reverend Harold Davis, TALKS; Mary Kay Pleck, League of Women Voters (LWV); Mike Williams, Children's Advocacy Center (CAC); Deborah Hlavna, ECIRMAC; Stephanie Record, Crisis Nursery (CN); Leon Bryson, Parenting with Love and Limits (PLL); Kim Fairley, Best Interest of Children (BIOC); Vicki Niswander, Jennifer Knapp, Community Choices; Janice Mitchell, Urbana Neighborhood Connections Center; Laurie Haber, Urbana School District

---

**CALL TO ORDER:**

Dr. Townsend, Board President, called the meeting to order at 4:35 p.m.

**ROLL CALL:**

Roll call was taken, and a quorum was present.

**ADDITIONS TO AGENDA:**

None.

**CITIZEN INPUT:**

Ms. Laurie Haber, a school district social worker in Urbana, expressed her gratitude and support for school-based services.

**CCDDB INFORMATION:**

The CCDDB met earlier in the day and reviewed program summaries.

**APPROVAL OF MINUTES:**

Minutes from the March 23, 2011 Board meeting were included in the packet for review.

**MOTION: Mr. Gleason moved to approve the minutes from the March 23, 2011 Board meeting. Ms. Anderson seconded the motion. A vote was taken and the motion passed unanimously.**

**PRESIDENT'S COMMENTS:**

Dr. Townsend announced there was much material to review and she plans on keeping the meeting moving along.

**EXECUTIVE DIRECTOR'S COMMENTS:**

Mr. Tracy distributed a report from the Association of Community Mental Health Authorities of Illinois (ACMHAI) that provided an FY 2012 economic forecast and review estimate and an FY 2011 revenue update.

**STAFF REPORTS:**

None.

## **BOARD TO BOARD:**

Dr. Deloris Henry recognized Mr. Bob Kirchner's passing and his dedicated service to the community.

## **AGENCY INFORMATION:**

None.

## **FINANCIAL INFORMATION:**

### **Approval of Claims:**

A copy of the expenditure approval list was included in the Board packet for review.

**MOTION: Dr. Henry moved to accept the claims report as presented in the Board packet. Ms. Dannave seconded the motion. The motion passed unanimously.**

## **NEW BUSINESS:**

### **Program Summaries:**

Draft CCMHB program summaries were included in the Board packet. A Briefing Memorandum, a list of CCMHB, Quarter Cent and ACCESS Initiative applications received and a glossary of terms was included in the packet as well. Mr. Tracy briefly reviewed each agencies application requests. Agencies were given an opportunity to respond to their program summaries in writing or in person at the meeting. Letters received from Prairie Center Health Systems (PCHS) and SOAR and were distributed at the meeting.

Board members were given an opportunity to ask agency representatives questions or clarification regarding their applications. Board members expressed a positive response to the ACCESS Initiative's ratings system used to rate the ACCESS funding applications. Mr. Tracy announced that funding decisions will be made at the May 18th Board meeting.

### **Cultural and Linguistic Competence Plans Review:**

A Briefing Memorandum and a rating scale of applicant's cultural competency plans was included in the Board packet for review.

## **OLD BUSINESS:**

### **Anti-Stigma Alliance Event Update:**

A report from Ms. Barb Bressner was included in the Board packet.

**Developmental Disabilities Expo Update:**

A report from Ms. Barb Bressner was included in the Board packet.

**BOARD ANNOUNCEMENTS:**

None.

**ADJOURNMENT:**

The business meeting adjourned at 6:00 p.m.

Respectfully

Submitted by: \_\_\_\_\_ Approved by: \_\_\_\_\_  
Stephanie Howard-Gallo Deborah Townsend  
CCMHB/CCDDB Staff CCMHB President

Date: \_\_\_\_\_ Date: \_\_\_\_\_

*\*Minutes are in draft form and are subject to CCMHB approval.*

**Mark Driscoll**

**Associate Director for Mental Health & Substance Abuse Services**

**Staff Report – May 18, 2011 Board Meeting**

**Summary of Activity**

2012 Contracts: In anticipation of the Board's funding decisions at the May meeting, the current contract boilerplate has been reviewed and updated. The paragraph on obligations of the Board highlighted in the Decision Memorandum has been inserted into the payment section. Modification to the audit section has been made to reflect changes resulting from the Audit & Financial Accountability Addendum to the CCMHB Funding Guidelines. And in the report section the due date for fourth quarter program and financial reports was adjusted to give agencies additional time to close out their records and report results.

During the preparation of the program summaries, points requiring clarification and potential special provisions were identified. The notes have been written up and will be used during the contracting phase of the allocation process. An informational sheet distributed with the contracts has been updated too. The sheet describes steps for executing the contract and is a supplement to the award letters sent to agencies.

Quarterly Reports: Following the close of each quarter each program is required to report activity specific to the quarter. For third quarter reports the deadline was Friday, April 29<sup>th</sup>. The program report, zip code form and demographic form comprise the quarterly report. Data submitted on the program reports includes number of community service events, service contacts, treatment plan clients and non-treatment plan clients. Some programs may also use "Other" to provide additional data in support of the four primary service classifications. Narrative may also be included in the comment section to highlight aspects of services not captured by the raw data.

Of greatest interest is data on clients served, reported as either treatment plan clients or non-treatment plan clients. Any program with client data must also complete the zip code form and the demographic form. The exception is where a programs' primary activity is delivery of community service events where client data is not collected.

Reports submitted have been reviewed and activity reported posted to the database. Follow-up contact was made as necessary to clarify discrepancies or omissions of data. Typically this is related to the zip code or demographic forms where those numbers do not match number of clients reported on the quarterly program report. In some cases contacts are made because an agency has not completed the reports by the deadline. For those agencies, a short grace period is granted to complete the forms. If an agency has not submitted forms after the grace period, notice is sent to the agency executive director that the program is out of compliance and subject to suspension of funding until the documents have been submitted.

Program Monitoring: With the start of the fourth quarter, monitoring of the 2011 programs becomes a priority. Each contract, grant and fee for service, is subject to an annual review to verify reported service activity. Grant based contracts receive a site visit. Fee for Service contracts are subject to a record review. The visits are being scheduled and will extend into the first quarter of 2012.

Quarter Cent Administrative Team: Most quarterly team meetings focus on program performance and coordination of services. At the meeting on April 20<sup>th</sup>, a brief overview and discussion of the programs was held but the primary purpose was to review the Quarter Cent funding and Parenting with Love and Limits applications with our criminal justice system partners. Dr. Sells and Ellen Souder from Savannah Family Institute participated by conference call in the PLL applications discussion. The partners' input was considered in making final funding recommendations.

Specialty Courts Steering Committee: The Steering Committee had reports on a variety of topics associated with the Drug Court and Mental Health Court. In March, a special graduation was held for three Drug Court participants. The next graduation is scheduled for 2:15 p.m. on June 13<sup>th</sup> at the Urbana Civic Center. As was the case with the start up of Drug Court, Mental Health Court is moving slowly with implementation. The Mental Health Court has two clients with one assessment pending. Other potential participants have been considered but in reviewing the cases it was determined they did not meet the criteria.

Other Activity: The Illinois Association for Infant Mental Health - Central Illinois Chapter met in Champaign in early May. The meeting included a demonstration of "reflective supervision" and small group discussions. The next meeting will focus on provider collaboration and coordination of services as that was a topic raised in several of the group discussions. At the Senior Wellness Coalition meeting plans were announced for a central Illinois Mental Health and Aging conference to be held in October, the Diabetes Prevention Coalition has been formed led by Provena-Covenant Medical Center and CUPHD, and the Chronic Disease Self-Management Program at Family Service received a small grant to extend the program through February 2012. The Urbana School Based Health Center Advisory Committee met to review plans for summer services and fall registration. The clinic has reduced hours over the summer month but mental health services will be available five days per week with medical and dental services offered on alternating days. Utilization of services, staffing, and funding were also on the agenda.



# Lynn Canfield, Associate Director for Developmental Disabilities Staff Report – May 18, 2011

Agency Monitoring Visits and Quarterly Reports: Stephanie Howard-Gallo and I completed program monitoring visits for one CCMHB- and five CCDDDB-funded programs at three agencies. Each of Developmental Services Center’s Apartment Services and Client/Family Support Services programs, Charleston Transitional Facilities’ Nursing and Residential programs, and Community Choices’ Customized Employment and Self-Determination Support programs is new to us this year. We enjoyed longer than usual visits with directors and staff servicing these contracts and learned about program activities; we clarified expectations regarding eligibility, documentation, and reporting. Data reported for second quarter for each program were verified. The remaining FY11 site visits are being scheduled. Third Quarter Reports were due on Friday, April 29, and it appears that all CCDDDB-funded agencies submitted them on time, some supplying additional information as requested or as they choose. While entering data into our tables, I will ask for any clarification or corrections needed.

Anti-Stigma Alliance and ACCESS Initiative: The sponsored film, Louder than a Bomb, closed Roger Ebert’s film festival with plenty of media coverage and served as our free post-festival community film that afternoon. Directly afterward, performances by local youth and stars of the film, along with a youth art and poetry exhibit, kicked off Children’s Mental Health Awareness Week. To commemorate the week, ACCESS Initiative distributed bright green bracelets community-wide and made them available at their many events. One of these was a well-attended Community Leader Luncheon which featured an update from Tracy Parsons and a brief presentation by MEE (Motivational Educational Entertainment) Productions on their research in promoting mental wellness and resiliency in urban communities. Green bracelets were visible that evening on the wrists of Champaign’s mayor and City Manager throughout the council meeting and swearing in ceremonies. Later in the week, a two-hour ACCESS sponsored Teen SPEAK poetry event featured powerful readings by many young poets and tied back to the film while emphasizing mental health, resiliency, trauma, and stigma.

Board to Board: At the April 27 meeting of the Champaign County Senior Services Advisory Board, I learned that 40% of those aged 55 and older are still in the work force, which is beginning to have an impact on volunteers, the engine of many social service efforts. The June 22 meeting promises updates on SHIP (State Health Insurance Assistance Program) and national health care. I was unable to attend the most recent TALKS board meeting due to a prior commitment.

Other Activity: CCDDDB and CCMHB contract boilerplates have been updated to incorporate the audit accountability policies approved in January. I continued the conversation with George Ordal of UI School of Medicine in preparation for a June 22 study session on the topic of nutrition and health/mental health. I attended March and April Mental Health Agencies Council meetings, a Metropolitan Intergovernmental Council meeting, Champaign County Transition Planning Committee meeting, and meetings of the Community Response Group. During the April meeting of the Quarter Cent Administrative Team, we teleconferenced with Scott Sells and Ellen Souder of Savannah Family Institute for discussion of funding requests.

Unmet Need for DD Services in Champaign County: Due to changes in intake and waiting list procedures, as well as the high likelihood of duplication across waiting lists, agencies may have difficulty assessing unmet need of county residents. I spoke with Babette Leek, PAS/ISSA, about using

PUNS for this purpose. Given that the proposed Ligas Consent Decree calls for placement from PUNS of 3,000 Illinois residents, this database is likely to remain current and comprehensive, possibly serving as a more stable source of information on the services being sought in our community.

From the PUNS update published on February 7, 2011:

- **194** individuals in Champaign County were identified with “emergency need.” The earlier point system is no longer in place; now individuals are automatically eligible if emergency need can be demonstrated, but no award is guaranteed (e.g., placement or HBSS, both now vulnerable to rate cuts).
- **269** Champaign County residents identified as in need of service within a year; **116** of these are recent or coming graduates. This is reflected in the description of existing services, with Education first, then Speech, then OT, and then Behavioral.

An update from April 5, 2011 is attached. For comparison with February data:

- **198** individuals in Champaign County are now identified in "emergency need."
- **274** in crisis (need service within a year), of whom **120** are recent or coming grads.

Supports sought are (in order of demand) Transportation, Personal Support, Support to work in community, Support for in-center work/activities, Occupational Therapy, Speech Therapy, Behavioral Supports, 24 hour Residential, Respite, Physical Therapy, Intermittent Residential Support, and Assistive Technology.

Champaign County data are referenced on pages 23-25 of the full document, which can be viewed at: <http://www.dhs.state.il.us/OneNetLibrary/27897/documents/DD%20Reports/PUNS/CountyandSelectionDetail040511.pdf>



**PUNS Data By County and Selection Detail**

**County: Champaign**

**April 05, 2011**

**Reason for PUNS or PUNS Update**

New	175
Annual Update	91
Change of category (Emergency, Planning, or Critical)	17
Change of service needs (more or less) - unchanged category (Emergency, Planning, or Critical)	3
Person is fully served or is not requesting any supports within the next five (5) years	121
Moved to another state, close PUNS	4
Deceased	2
Other, supports still needed	5
Other, close PUNS	20

**EMERGENCY NEED(Person needs in-home or day supports immediately)**

1. Individual needs immediate support to stay in their own home/family home (short term - 90 days or less); e.g., hospitalization of care giver or temporary illness of an individual living in their own home.	9
2. Individual needs immediate support to stay in their own home/family home or maintain their employment situation (long term); e.g., due to the person's serious health or behavioral issues.	15
3. Care giver needs immediate support to keep their family member at home (short term - 90 days or less); e.g., family member recuperating from illness and needs short term enhanced supports.	4
4. Care giver needs immediate support to keep their family member at home (long term); e.g., care giver is permanently disabled or is terminally ill and needs long term enhanced supports immediately to keep their family member at home.	6

**EMERGENCY NEED(Person needs out-of-home supports immediately)**

1. Care giver is unable or unwilling to continue providing care (e.g., person has been abandoned).	28
2. Death of the care giver with no other supports available.	4
3. Person has been committed by the court or is at risk of incarceration.	3
4. Person is living in a setting where there is suspicion of abuse or neglect.	3
5. Person is in an exceedingly expensive or inappropriate placement and immediately needs a new place to live (for example, an acute care hospital, a mental health placement, a homeless shelter, etc.).	7
6. Other crisis, Specify:	119

**CRITICAL NEED(Person needs supports within one year)**

1. Individual or care giver will need support within the next year in order for the individual to continue living in their current situation.	26
2. Person has a care giver (age 60+) and will need supports within the next year.	6
3. Person has an ill care giver who will be unable to continue providing care within the next year.	3
4. Person has behavior(s) that warrant additional supports to live in their own home or family home.	24
5. Individual personal care needs cannot be met by current care givers or the person's health has deteriorated.	7
6. There has been a death or other family crisis, requiring additional supports.	3
7. Person has a care giver who would be unable to work if services are not provided.	16
8. Person or care giver needs an alternative living arrangement.	11
9. Person has graduated or left school in the past 10 years, or will be graduating in the next 3 years.	120
10. Person is living in an inappropriate place, awaiting a proper place (can manage for the short term; e.g., persons aging out of children's residential services).	2
11. Person moved from another state where they were receiving residential, day and/or in-home supports.	8
12. The state has plans to assist the person in moving within the next year (from a state-operated or private Intermediate Care Facility for People with Developmental Disabilities, nursing home or state hospital).	1



**PUNS Data By County and Selection Detail**

April 05, 2011

13. Person is losing eligibility for Department of Children and Family Services supports in the next year.	5
14. Person is losing eligibility for Early Periodic Screening, Diagnosis and Treatment supports in the next year.	3
15. Person is losing eligibility for Intermediate Care Facility for People with Developmental Disabilities supports in the next year.	1
16. Person is losing eligibility for Medically Fragile/Technology Dependant Children's Waiver supports in the next year.	1
17. Person is residing in an out-of-home residential setting and is losing funding from the public school system.	1
20. Person wants to leave current setting within the next year.	5
21. Person needs services within the next year for some other reason, specify:	31

**PLANNING FOR NEED(Person's needs for service is more than a year away but less than 5 years away, or the care giver is older than 60 years)**

1. Person is not currently in need of services, but will need service if something happens to the care giver.	73
2. Person lives in a large setting, and person/family has expressed a desire to move (or the state plans to move the person).	1
3. Person is dissatisfied with current residential services and wishes to move to a different residential setting.	1
4. Person wishes to move to a different geographic location in Illinois.	3
5. Person currently lives in out-of-home residential setting and wishes to live in own home.	1
6. Person currently lives in out-of-home residential setting and wishes to return to parents' home and parents concur.	2
7. Person is receiving supports for vocational or other structured activities and wants and needs increased supports to retire.	1
8. Person or care giver needs increased supports.	45
9. Person is losing eligibility for Department of Children and Family Services supports within 1-5 years.	2
14. Other, Explain:	18

**EXISTING SUPPORTS AND SERVICES**

Respite Supports (24 Hour)	20
Respite Supports (<24 hour)	21
Behavioral Supports (includes behavioral intervention, therapy and counseling)	87
Physical Therapy	61
Occupational Therapy	111
Speech Therapy	140
Education	179
Assistive Technology	31
Homemaker/Chore Services	3
Adaptions to Home or Vehicle	5
Personal Support under a Home-Based Program, Which Could Be Funded By Developmental Disabilities, Division of Rehabilitation Services or Department on Aging (can include habilitation, personal care, respite, retirement supports, budgeting, etc.)	5
Medical Equipment/Supplies	10
Nursing Services in the Home, Provided Intermittently	1
Other Individual Supports	18

**TRANSPORTATION**

Transportation (include trip/mileage reimbursement)	116
Other Transportation Service	47
Senior Adult Day Services	2
Developmental Training	65
"Regular Work"/Sheltered Employment	77
Supported Employment	40
Vocational and Educational Programs Funded By the Division of Rehabilitation Services	13



**PUNS Data By County and Selection Detail**

Other Day Supports (e.g. volunteering, community experience)

April 05, 2011

6

**RESIDENTIAL SUPPORTS**

Community Integrated Living Arrangement (CILA)/Family	6
Community Integrated Living Arrangement (CILA)/Intermittent	7
Community Integrated Living Arrangement (CILA)/Host Family	1
Community Integrated Living Arrangement (CILA)/24 Hour	31
Intermediate Care Facilities for People with Developmental Disabilities (ICF/DD) 16 or Fewer People	2
Intermediate Care Facilities for People with Developmental Disabilities (ICF/DD) 17 or More People	1
Skilled Nursing Facility/Pediatrics (SNF/PED)	2
Supported Living Arrangement	1
Shelter Care/Board Home	1
Children's Residential Services	7
Child Care Institutions (Including Residential Schools)	4
Other Residential Support (including homeless shelters)	8

**SUPPORTS NEEDED**

Personal Support (includes habilitation, personal care and intermittent respite services)	226
Respite Supports (24 hours or greater)	89
Behavioral Supports (includes behavioral intervention, therapy and counseling)	133
Physical Therapy	81
Occupational Therapy	169
Speech Therapy	141
Assistive Technology	67
Adaptations to Home or Vehicle	29
Nursing Services in the Home, Provided Intermittently	5
Other Individual Supports	36

**TRANSPORTATION NEEDED**

Transportation (include trip/mileage reimbursement)	231
Other Transportation Service	78

**VOCATIONAL OR OTHER STRUCTURED ACTIVITIES**

Support to work at home (e.g., self employment or earning at home)	6
Support to work in the community	154
Support to engage in work/activities in a disability setting	151

**RESIDENTIAL SUPPORTS NEEDED**

Out-of-home residential services with less than 24-hour supports	71
Out-of-home residential services with 24-hour supports	112

CHAMPAIGN COUNTY

EXPENDITURE APPROVAL LIST

5/05/11

PAGE 1

VENDOR NO	VENDOR NAME	TRN DTE	B N	TR CD	TRANS NO	PO NO	CHECK NUMBER	CHECK DATE	ACCOUNT NUMBER	ACCOUNT DESCRIPTION	ITEM DESCRIPTION	EXPENDITURE AMOUNT
*** FUND NO. 090 MENTAL HEALTH												
*** DEPT NO. 053 MENTAL HEALTH BOARD												
41	CHAMPAIGN COUNTY TREASURER								HEALTH INSUR FND 620			
		4/25/11	01	VR	620-	89	452471	4/29/11	090-053-513.06-00	EMPLOYEE HEALTH/LIFE INS APR HI & LI		2,728.00
										VENDOR TOTAL		2,728.00 *
88	CHAMPAIGN COUNTY TREASURER								I.M.R.F. FUND 088			
		4/13/11	02	VR	88-	26	451324	4/14/11	090-053-513.02-00	IMRF - EMPLOYER COST	IMRF 3/25 P/R	1,285.39
		4/19/11	08	VR	88-	29	451622	4/21/11	090-053-513.02-00	IMRF - EMPLOYER COST	IMRF 4/8 P/R	1,286.15
		5/02/11	01	VR	88-	33	452871	5/05/11	090-053-513.02-00	IMRF - EMPLOYER COST	IMRF 4/21 P/R	1,288.20
										VENDOR TOTAL		3,859.74 *
176	CHAMPAIGN COUNTY TREASURER								SELF-FUND INS FND476			
		4/27/11	04	VR	119-	34	452483	4/29/11	090-053-513.04-00	WORKERS' COMPENSATION INSWORK COMP 3/11,25 P		115.58
										VENDOR TOTAL		115.58 *
188	CHAMPAIGN COUNTY TREASURER								SOCIAL SECUR FUND188			
		4/13/11	02	VR	188-	37	451330	4/14/11	090-053-513.01-00	SOCIAL SECURITY-EMPLOYER FICA 3/25 P/R		944.59
		4/19/11	08	VR	188-	42	451628	4/21/11	090-053-513.01-00	SOCIAL SECURITY-EMPLOYER FICA 4/8 P/R		945.14
		5/02/11	01	VR	188-	46	452877	5/05/11	090-053-513.01-00	SOCIAL SECURITY-EMPLOYER FICA 4/21 P/R		946.65
										VENDOR TOTAL		2,836.38 *
572	ABSOPURE WATER											
		4/19/11	04	VR	53-	163	451629	4/21/11	090-053-533.51-00	EQUIPMENT RENTALS	805308-52779793 3/3	9.00
		4/19/11	04	VR	53-	163	451629	4/21/11	090-053-522.02-00	OFFICE SUPPLIES	805308-81904329 3/2	6.50
										VENDOR TOTAL		15.50 *
5780	BP COMPUTER SERVICES											
		5/03/11	04	VR	53-	168	452886	5/05/11	090-053-533.07-00	PROFESSIONAL SERVICES	DEC-FEB CNSLT#11-04	625.00
		5/03/11	04	VR	53-	168	452886	5/05/11	090-053-533.07-00	PROFESSIONAL SERVICES	MAR-MAY CNSLT#11-04	625.00
										VENDOR TOTAL		1,250.00 *

11.4.

CHAMPAIGN COUNTY

EXPENDITURE APPROVAL LIST

5/05/11

PAGE 2

VENDOR NO	VENDOR NAME	TRN DTE	B N CD	TRANS NO	PO NO	CHECK NUMBER	CHECK DATE	ACCOUNT NUMBER	ACCOUNT DESCRIPTION	ITEM DESCRIPTION	EXPENDITURE AMOUNT
*** FUND NO. 090 MENTAL HEALTH											
10000	BUNDY BUSINESS MACHINES										
		4/26/11	03 VR	53- 167		452518	4/29/11	090-053-533.42-00	EQUIPMENT MAINTENANCE	INV 88334 4/14	87.50
		4/26/11	03 VR	53- 167		452518	4/29/11	090-053-533.42-00	EQUIPMENT MAINTENANCE	INV 88334 4/14	68.40
										VENDOR TOTAL	155.90 *
12986	CATHOLIC CHARITIES								SPALDING PASTORAL CR		
		5/03/11	04 VR	53- 173		452894	5/05/11	090-053-533.92-00	CONTRIBUTIONS & GRANTS	MAR COUNSELING	667.00
										VENDOR TOTAL	667.00 *
18046	COMCAST CABLE										
		4/19/11	04 VR	53- 162		451663	4/21/11	090-053-533.29-00	COMPUTER SERVICES	8771403010088314 4/	84.90
										VENDOR TOTAL	84.90 *
26000	FAMILY SERVICE OF CHAMPAIGN COUNTY								GRANTS		
		5/03/11	04 VR	53- 174		452915	5/05/11	090-053-533.92-00	CONTRIBUTIONS & GRANTS	MAR FAM COUNSELING	3,842.62
										VENDOR TOTAL	3,842.62 *
35960	ILLINOIS DEPT OF EMPLOYMENT SECURITY								#0801969-1		
		4/19/11	02 VR	76- 2		451712	4/21/11	090-053-513.05-00	UNEMPLOYMENT INSURANCE	UNEMPLOY TAX Q1 201	2,308.08
										VENDOR TOTAL	2,308.08 *
47262	MENTAL HEALTH CENTER OF CHAMPAIGN COUNTY								GRANTS		
		4/19/11	04 VR	53- 164		451742	4/21/11	090-053-533.92-00	CONTRIBUTIONS & GRANTS	MAR TIMES CENTER	4,000.00
										VENDOR TOTAL	4,000.00 *
56750	PRAIRIE CENTER HEALTH SYSTEMS								GRANTS		
		5/03/11	04 VR	53- 175		452961	5/05/11	090-053-533.92-00	CONTRIBUTIONS & GRANTS	MAR FAM THERAPY	4,406.00
		5/03/11	04 VR	53- 175		452961	5/05/11	090-053-533.92-00	CONTRIBUTIONS & GRANTS	MAR RESIDENTIAL	5,158.80
										VENDOR TOTAL	9,564.80 *
61500	ROGARDS										
		5/03/11	04 VR	53- 170		452965	5/05/11	090-053-522.02-00	OFFICE SUPPLIES	INV 1247407 4/22	63.57
										VENDOR TOTAL	63.57 *

CHAMPAIGN COUNTY

EXPENDITURE APPROVAL LIST

5/05/11

PAGE 3

VENDOR NO	VENDOR NAME	TRN DTE	B N CD	TRANS NO	PO NO	CHECK NUMBER	CHECK DATE	ACCOUNT NUMBER	ACCOUNT DESCRIPTION	ITEM DESCRIPTION	EXPENDITURE AMOUNT
*** FUND NO. 090 MENTAL HEALTH											
67867	SPOC LLC	4/25/11	02 VR	16-	110	452660	4/29/11	090-053-533.33-00	D/B/A CHAMPAIGN TEL TELEPHONE SERVICE	INV 1075812 4/14 VENDOR TOTAL	38.13 38.13 *
69248	STAPLES CREDIT PLAN	4/26/11	03 VR	53-	166	452662	4/29/11	090-053-522.02-00	DEPT 82-0002638781 OFFICE SUPPLIES	8781-9215060758 4/8 VENDOR TOTAL	356.68 356.68 *
78550	VERIZON WIRELESS-MENTAL HEALTH BOARD	4/12/11	01 VR	53-	161	451437	4/14/11	090-053-533.29-00	AC 386356887-00001 COMPUTER SERVICES	AC38635688701 3/20	120.14
		4/12/11	01 VR	53-	161	451437	4/14/11	090-053-533.33-00	TELEPHONE SERVICE	AC38635688701 3/20	99.38
		5/03/11	04 VR	53-	172	452982	5/05/11	090-053-533.33-00	TELEPHONE SERVICE	AC 386356887-01 4/2	99.28
		5/03/11	04 VR	53-	172	452982	5/05/11	090-053-533.29-00	COMPUTER SERVICES	AC 386356887-01 4/2	120.14
										VENDOR TOTAL	438.94 *
78873	VISA CARDMEMBER SERVICES	5/03/11	04 VR	53-	176	452992	5/05/11	090-053-522.02-00	OFFICE SUPPLIES	7790 STAPLES 12/9	22.18-
		5/03/11	04 VR	53-	176	452992	5/05/11	090-053-533.95-00	CONFERENCES & TRAINING	7790 SCHNUCK URB3/2	29.11
		5/03/11	04 VR	53-	176	452992	5/05/11	090-053-533.95-00	CONFERENCES & TRAINING	7790 MEIJER URBA3/2	34.31
		5/03/11	04 VR	53-	176	452992	5/05/11	090-053-533.84-00	BUSINESS MEALS/EXPENSES	7790 ORIGPANCAKE4/1	62.04
										VENDOR TOTAL	103.28 *
81610	XEROX CORPORATION	4/26/11	03 VR	53-	165	452706	4/29/11	090-053-533.85-00	PHOTOCOPY SERVICES	INV 114107730 4/5 VENDOR TOTAL	264.63 264.63 *
602880	BRESSNER, BARBARA J.	5/03/11	04 VR	53-	169	453003	5/05/11	090-053-533.07-00	PROFESSIONAL SERVICES	MAY CONSULTING FEE VENDOR TOTAL	2,625.00 2,625.00 *
604568	CANFIELD, LYNN	4/12/11	01 VR	53-	159	451450	4/14/11	090-053-533.12-00	MENTAL HEALTH BOARD JOB-REQUIRED TRAVEL EXP	96 MILE 2/7-3/29	48.96



CHAMPAIGN COUNTY

EXPENDITURE APPROVAL LIST

5/05/11

PAGE 4

VENDOR NO	VENDOR NAME	TRN DTE	B N CD	TR	TRANS NO	PO NO	CHECK NUMBER	CHECK DATE	ACCOUNT NUMBER	ACCOUNT DESCRIPTION	ITEM DESCRIPTION	EXPENDITURE AMOUNT
*** FUND NO. 090 MENTAL HEALTH												
		4/12/11	01 VR	53-	159		451450	4/14/11	090-053-533.12-00	JOB-REQUIRED TRAVEL EXP	PARKING 2/28-3/22	2.00
		4/12/11	01 VR	53-	159		451450	4/14/11	090-053-533.84-00	BUSINESS MEALS/EXPENSES	LUNCH 3/1 W DANNAVE	30.13
											VENDOR TOTAL	81.09 *
609500	CRAWFORD, NANCY K									MENTAL HEALTH BOARD		
		5/03/11	04 VR	53-	171		453010	5/05/11	090-053-533.12-00	JOB-REQUIRED TRAVEL EXP	148 MILE 3/3-4/26	75.48
		5/03/11	04 VR	53-	171		453010	5/05/11	090-053-533.12-00	JOB-REQUIRED TRAVEL EXP	PARKING 4/13	.25
											VENDOR TOTAL	75.73 *
611802	DRISCOLL, MARK									MENTAL HEALTH		
		4/12/11	01 VR	53-	158		451454	4/14/11	090-053-533.12-00	JOB-REQUIRED TRAVEL EXP	86 MILE 2/3-3/14	43.86
											VENDOR TOTAL	43.86 *
619548	HOWARD-GALLO, STEPHANIE									MENTAL HEALTH BD		
		4/12/11	01 VR	53-	160		451464	4/14/11	090-053-533.12-00	JOB-REQUIRED TRAVEL EXP	57 MILE 2/10-3/29	29.07
		4/12/11	01 VR	53-	160		451464	4/14/11	090-053-533.95-00	CONFERENCES & TRAINING	186ML 2/29-31 SPRNG	94.86
		4/12/11	01 VR	53-	160		451464	4/14/11	090-053-533.95-00	CONFERENCES & TRAINING	BRKST 3/30 SPRINGFL	11.00
		4/12/11	01 VR	53-	160		451464	4/14/11	090-053-533.95-00	CONFERENCES & TRAINING	PARKNG 3/29-31 SPRN	14.00
		4/12/11	01 VR	53-	160		451464	4/14/11	090-053-533.95-00	CONFERENCES & TRAINING	LODGE TIP3/31 SPRNG	10.00
											VENDOR TOTAL	158.93 *
644010	TRACY, PETER									MENTAL HEALTH BOARD		
		4/12/11	01 VR	53-	157		451495	4/14/11	090-053-533.95-00	CONFERENCES & TRAINING	180MI 3/29-31 SPRNG	91.80
		4/12/11	01 VR	53-	157		451495	4/14/11	090-053-533.95-00	CONFERENCES & TRAINING	BRKST 3/30 SPRINGFL	22.00
		4/12/11	01 VR	53-	157		451495	4/14/11	090-053-533.95-00	CONFERENCES & TRAINING	LODGE 3/29-30SPRING	1,209.52
		4/12/11	01 VR	53-	157		451495	4/14/11	090-053-533.95-00	CONFERENCES & TRAINING	PARKING 3/29 SPRING	14.00
											VENDOR TOTAL	1,337.32 *
										MENTAL HEALTH BOARD	DEPARTMENT TOTAL	37,015.66 *
										MENTAL HEALTH	FUND TOTAL	37,015.66 *

CHAMPAIGN COUNTY

EXPENDITURE APPROVAL LIST

5/05/11

PAGE 6

VENDOR NO	VENDOR NAME	TRN DTE	B N CD	TRANS NO	PO NO	CHECK NUMBER	CHECK DATE	ACCOUNT NUMBER	ACCOUNT DESCRIPTION	ITEM DESCRIPTION	EXPENDITURE AMOUNT
*** FUND NO. 641 ACCESS INITIATIVE GRANT											
*** DEPT NO. 053 MENTAL HEALTH BOARD											
25	CHAMPAIGN COUNTY TREASURER							RENT-GENERAL CORP			
		5/03/11	04 VR 641-	99		452867	5/05/11	641-053-533.50-00	FACILITY/OFFICE RENTALS	MAY OFFICE RENTAL	1,574.08
										VENDOR TOTAL	1,574.08 *
41	CHAMPAIGN COUNTY TREASURER							HEALTH INSUR FND 620			
		4/25/11	01 VR 620-	89		452471	4/29/11	641-053-513.06-00	EMPLOYEE HEALTH/LIFE INS	APR HI & LI	3,819.20
										VENDOR TOTAL	3,819.20 *
88	CHAMPAIGN COUNTY TREASURER							I.M.R.F. FUND 088			
		4/13/11	02 VR 88-	26		451324	4/14/11	641-053-513.02-00	IMRF - EMPLOYER COST	IMRF 3/25 P/R	1,370.62
		4/19/11	08 VR 88-	29		451622	4/21/11	641-053-513.02-00	IMRF - EMPLOYER COST	IMRF 4/8 P/R	1,362.30
		5/02/11	01 VR 88-	33		452871	5/05/11	641-053-513.02-00	IMRF - EMPLOYER COST	IMRF 4/21 P/R	1,425.70
										VENDOR TOTAL	4,158.62 *
96	CHAMPAIGN COUNTY TREASURER							T & A ADVANCES			
		4/12/11	01 VR 641-	68		451325	4/14/11	641-053-533.95-00	CONFERENCES & TRAINING	TD1373 ROLLINS, JONT	190.00
		4/19/11	04 VR 641-	65		451623	4/21/11	641-053-533.95-00	CONFERENCES & TRAINING	TD1370 PARSONS, TRAC	123.94
		4/19/11	04 VR 641-	66		451623	4/21/11	641-053-533.95-00	CONFERENCES & TRAINING	TD1371 SIMMS, KAREN	190.00
		4/26/11	03 VR 641-	59		452479	4/29/11	641-053-533.18-00	NON-EMPLOYEE TRAINING, SEMTD1368	GRADY, LINDA	290.00
		4/26/11	03 VR 641-	60		452479	4/29/11	641-053-533.18-00	NON-EMPLOYEE TRAINING, SEMTD1369	WILLIAMS, ABG	290.00
		4/26/11	03 VR 641-	67		452479	4/29/11	641-053-533.95-00	CONFERENCES & TRAINING	TD1372 SPIRES, ADRIE	190.00
		5/03/11	04 VR 641-	101		452873	5/05/11	641-053-533.07-00	PROFESSIONAL SERVICES	TD1424 MEE PRODUCTN	4,000.00
										VENDOR TOTAL	5,273.94 *
176	CHAMPAIGN COUNTY TREASURER							SELF-FUND INS FND476			
		4/27/11	04 VR 119-	34		452483	4/29/11	641-053-513.04-00	WORKERS' COMPENSATION	INSWORK COMP 3/11, 25 P	119.13
										VENDOR TOTAL	119.13 *
188	CHAMPAIGN COUNTY TREASURER							SOCIAL SECUR FUND188			
		4/13/11	02 VR 188-	37		451330	4/14/11	641-053-513.01-00	SOCIAL SECURITY-EMPLOYER FICA	3/25 P/R	1,007.23

CHAMPAIGN COUNTY

EXPENDITURE APPROVAL LIST

5/05/11

PAGE 7

VENDOR NO	VENDOR NAME	TRN DTE	B N CD	TRANS NO	PO NO	CHECK NUMBER	CHECK DATE	ACCOUNT NUMBER	ACCOUNT DESCRIPTION	ITEM DESCRIPTION	EXPENDITURE AMOUNT
*** FUND NO. 641 ACCESS INITIATIVE GRANT											
		4/19/11	08 VR	188- 42		451628	4/21/11	641-053-513.01-00	SOCIAL SECURITY-EMPLOYER	FICA 4/8 P/R	1,001.11
		5/02/11	01 VR	188- 46		452877	5/05/11	641-053-513.01-00	SOCIAL SECURITY-EMPLOYER	FICA 4/21 P/R	1,047.71
										VENDOR TOTAL	3,056.05 *
572	ABSOPURE WATER										
		4/19/11	04 VR	641- 86		451629	4/21/11	641-053-533.51-00	EQUIPMENT RENTALS	927471-52785903 3/3	9.00
		4/19/11	04 VR	641- 86		451629	4/21/11	641-053-522.02-00	OFFICE SUPPLIES	927471-81904342 3/2	13.40
										VENDOR TOTAL	22.40 *
910	ACTION INFLATABLES MEGA EVENTS, INC.										
		5/03/11	04 VR	641- 104		452879	5/05/11	641-053-533.89-00	PUBLIC RELATIONS	CMH INFLATABLE 5/7	395.00
										VENDOR TOTAL	395.00 *
5070	ATLANTA BREAD										
		4/19/11	04 VR	641- 91		451634	4/21/11	641-053-533.84-00	BUSINESS MEALS/EXPENSES	P3 WORKGROUP 3/2	130.90
		4/19/11	04 VR	641- 91		451634	4/21/11	641-053-533.84-00	BUSINESS MEALS/EXPENSES	COORD COUNCIL 3/16	313.60
		4/19/11	04 VR	641- 91		451634	4/21/11	641-053-533.84-00	BUSINESS MEALS/EXPENSES	YAB EX COMMTT 3/11	51.38
		4/19/11	04 VR	641- 91		451634	4/21/11	641-053-533.84-00	BUSINESS MEALS/EXPENSES	YAB EX COMMTT 3/11	6.79
		4/28/11	01 VR	641- 98		452506	4/29/11	641-053-533.84-00	BUSINESS MEALS/EXPENSES	YAB MTG MEALS 3/23	56.50
										VENDOR TOTAL	559.17 *
15108	CHAMPAIGN COUNTY BLACK CHAMBER COMMERCE										
		5/03/11	04 VR	641- 103		452896	5/05/11	641-053-533.89-00	PUBLIC RELATIONS	#100 4/21 CCBCC SPN	500.00
										VENDOR TOTAL	500.00 *
16930	CHRISP MEDIA, LLC										
		5/03/11	04 VR	641- 100		452902	5/05/11	641-053-533.07-00	PROFESSIONAL SERVICES	FLYER DESIGN 4/14	85.00
		5/03/11	04 VR	641- 100		452902	5/05/11	641-053-533.07-00	PROFESSIONAL SERVICES	BROCHUR DESIGN 4/20	150.00
		5/03/11	04 VR	641- 100		452902	5/05/11	641-053-533.07-00	PROFESSIONAL SERVICES	WEBSITE DESIGN 4/21	1,400.00
										VENDOR TOTAL	1,635.00 *
18047	COMCAST CABLE										
		4/19/11	04 VR	641- 89		451664	4/21/11	641-053-533.29-00	COMPUTER SERVICES	8771403010217756 AP	74.90
										VENDOR TOTAL	74.90 *

CHAMPAIGN COUNTY

EXPENDITURE APPROVAL LIST

5/05/11

PAGE 8

VENDOR NO	VENDOR NAME	TRN DTE	B N CD	TR TRANS NO	PO NO	CHECK NUMBER	CHECK DATE	ACCOUNT NUMBER	ACCOUNT DESCRIPTION	ITEM DESCRIPTION	EXPENDITURE AMOUNT
*** FUND NO. 641 ACCESS INITIATIVE GRANT											
20925	D & D CAB SERVICE								ATTN WILLIE DAVIS		
		4/12/11	01 VR 641-	82		451359	4/14/11	641-053-533.07-00	PROFESSIONAL SERVICES	TRNSPRT 3/3-29 YAB	184.00
		4/12/11	01 VR 641-	82		451359	4/14/11	641-053-533.18-00	NON-EMPLOYEE TRAINING, SEMWILLIAMS	3/19 BLMGT	85.00
		4/12/11	01 VR 641-	82		451359	4/14/11	641-053-533.95-00	CONFERENCES & TRAINING	SPIRE 3/23 INDY AIR	225.00
										VENDOR TOTAL	494.00 *
35960	ILLINOIS DEPT OF EMPLOYMENT SECURITY								#0801969-1		
		4/19/11	02 VR 76-	2		451712	4/21/11	641-053-513.05-00	UNEMPLOYMENT INSURANCE	UNEMPLOY TAX Q1 201	3,112.39
										VENDOR TOTAL	3,112.39 *
40488	KATHY DENNIS, KARL DENNIS & ASSOCIATES										
		5/03/11	04 VR 641-	106		452937	5/05/11	641-053-533.07-00	PROFESSIONAL SERVICES	#11-1004 5/1 WRPARN	1,500.00
										VENDOR TOTAL	1,500.00 *
51600	NEWS GAZETTE										
		4/12/11	01 VR 641-	83		451403	4/14/11	641-053-533.89-00	PUBLIC RELATIONS	AC 78329 2/13	550.00
										VENDOR TOTAL	550.00 *
56297	PORTLAND STATE UNIVERSITY										
		4/28/11	01 VR 641-	97		452634	4/29/11	641-053-533.93-00	DUES AND LICENSES	MEMBERSHIP-NWI 4/11	1,000.00
										VENDOR TOTAL	1,000.00 *
61780	ROSATI'S PIZZA AND CATERING								SUITE H		
		4/12/11	01 VR 641-	81		451421	4/14/11	641-053-533.84-00	BUSINESS MEALS/EXPENSES	ACCESS 2/8 FAB MTG	117.80
		4/12/11	01 VR 641-	81		451421	4/14/11	641-053-533.84-00	BUSINESS MEALS/EXPENSES	ACCESS 2/10 ACC ALL	153.75
		4/12/11	01 VR 641-	81		451421	4/14/11	641-053-533.84-00	BUSINESS MEALS/EXPENSES	ACCESS 2/21 NTRWK M	167.00
		4/12/11	01 VR 641-	81		451421	4/14/11	641-053-533.84-00	BUSINESS MEALS/EXPENSES	ACCESS 2/28 O&P PRC	21.47
		4/12/11	01 VR 641-	81		451421	4/14/11	641-053-533.84-00	BUSINESS MEALS/EXPENSES	ACCESS 3/3 MRKTG CO	82.99
		4/12/11	01 VR 641-	81		451421	4/14/11	641-053-533.84-00	BUSINESS MEALS/EXPENSES	ACCESS 3/15 YAB MTG	107.55
										VENDOR TOTAL	650.56 *
63561	SEABOAT INC										
		5/03/11	04 VR 641-	102		452967	5/05/11	641-053-533.84-00	BUSINESS MEALS/EXPENSES	COORD COUNCIL 3/10	215.76

CHAMPAIGN COUNTY

EXPENDITURE APPROVAL LIST

5/05/11

PAGE 9

VENDOR NO	VENDOR NAME	TRN DTE	B N CD	TRANS NO	PO NO	CHECK NUMBER	CHECK DATE	ACCOUNT NUMBER	ACCOUNT DESCRIPTION	ITEM DESCRIPTION	EXPENDITURE AMOUNT
*** FUND NO. 641 ACCESS INITIATIVE GRANT											
		5/03/11	04 VR	641-102		452967	5/05/11	641-053-533.95-00	CONFERENCES & TRAINING	STAFF MEETING 3/17	74.04
										VENDOR TOTAL	289.80 *
66296	SILVER MINE SUBS										
		4/19/11	04 VR	641-90		451777	4/21/11	641-053-533.84-00	BUSINESS MEALS/EXPENSES	448777 4/1 TA CMMIT	57.36
		4/28/11	01 VR	641-95		452658	4/29/11	641-053-533.84-00	BUSINESS MEALS/EXPENSES	447461 4/1 YAB MTG	80.61
										VENDOR TOTAL	137.97 *
67867	SPOC LLC								D/B/A CHAMPAIGN TEL		
		4/25/11	02 VR	16-110		452660	4/29/11	641-053-533.33-00	TELEPHONE SERVICE	INV 1075812 4/14	34.33
										VENDOR TOTAL	34.33 *
78552	VERIZON WIRELESS-MNTL HLTH BD/ACCESS								INT AC 286369166-00001		
		4/28/11	01 VR	641-94		452684	4/29/11	641-053-533.33-00	TELEPHONE SERVICE	AC28636916601 4/2	750.56
										VENDOR TOTAL	750.56 *
78873	VISA CARDMEMBER SERVICES										
		4/19/11	04 VR	641-85		451825	4/21/11	641-053-533.95-00	CONFERENCES & TRAINING	1939 HAMPTN INN 3/3	356.00
		4/19/11	04 VR	641-85		451825	4/21/11	641-053-533.95-00	CONFERENCES & TRAINING	1939 HAMPTN INN 3/4	105.09
		4/19/11	04 VR	641-85		451825	4/21/11	641-053-533.95-00	CONFERENCES & TRAINING	1939 HAMPTN INN 3/5	483.30
		4/19/11	04 VR	641-85		451825	4/21/11	641-053-533.95-00	CONFERENCES & TRAINING	1939 RENT A CAR 3/5	170.00
		4/19/11	04 VR	641-85		451825	4/21/11	641-053-533.95-00	CONFERENCES & TRAINING	1939 ACTEVA 3/8	138.48
		4/19/11	04 VR	641-85		451825	4/21/11	641-053-533.95-00	CONFERENCES & TRAINING	1939 UNITED CAB 3/1	26.00
		4/19/11	04 VR	641-85		451825	4/21/11	641-053-533.95-00	CONFERENCES & TRAINING	1939 DELTA 3/19	25.00
		4/19/11	04 VR	641-85		451825	4/21/11	641-053-533.95-00	CONFERENCES & TRAINING	1939 ACTEVA 3/18	85.00
		4/19/11	04 VR	641-85		451825	4/21/11	641-053-533.95-00	CONFERENCES & TRAINING	1939 DELTA BAGGE3/1	25.00
		4/19/11	04 VR	641-85		451825	4/21/11	641-053-533.95-00	CONFERENCES & TRAINING	1939 HYATT TAMPA3/2	477.03
		4/19/11	04 VR	641-85		451825	4/21/11	641-053-533.95-00	CONFERENCES & TRAINING	1939 HYATT TAMPA3/2	1,882.86
		4/19/11	04 VR	641-85		451825	4/21/11	641-053-533.84-00	BUSINESS MEALS/EXPENSES	1939 SCHNUCKS 3/8	21.43
		4/19/11	04 VR	641-85		451825	4/21/11	641-053-533.84-00	BUSINESS MEALS/EXPENSES	1939 SCHNUCKS 3/9	40.78
		4/19/11	04 VR	641-85		451825	4/21/11	641-053-533.84-00	BUSINESS MEALS/EXPENSES	1939 SCHNUCKS 3/17	8.34
		4/19/11	04 VR	641-85		451825	4/21/11	641-053-533.84-00	BUSINESS MEALS/EXPENSES	1939 THECLARKBAR 4/	53.00

CHAMPAIGN COUNTY

EXPENDITURE APPROVAL LIST

5/05/11

PAGE 10

VENDOR NO	VENDOR NAME	TRN DTE	B N CD	TR TRANS NO	PO NO	CHECK NUMBER	CHECK DATE	ACCOUNT NUMBER	ACCOUNT DESCRIPTION	ITEM DESCRIPTION	EXPENDITURE AMOUNT
*** FUND NO. 641 ACCESS INITIATIVE GRANT											
		4/19/11	04 VR	641-85		451825	4/21/11	641-053-533.29-00	COMPUTER SERVICES	1939 DREAMHOST 3/6	10.95
		4/19/11	04 VR	641-85		451825	4/21/11	641-053-533.18-00	NON-EMPLOYEE TRAINING, SEM1939	ACTEVA 3/8	170.00
		4/19/11	04 VR	641-85		451825	4/21/11	641-053-533.18-00	NON-EMPLOYEE TRAINING, SEM1939	HILTON CHCG3/1	333.52
		4/19/11	04 VR	641-85		451825	4/21/11	641-053-533.18-00	NON-EMPLOYEE TRAINING, SEM1939	HYATT TAMPA3/2	1,245.44
		4/19/11	04 VR	641-85		451825	4/21/11	641-053-533.95-00	CONFERENCES & TRAINING	1939 LEX EXP 3/16	100.10
										VENDOR TOTAL	5,757.32 *
81610	XEROX CORPORATION										
		4/19/11	04 VR	641-92		451832	4/21/11	641-053-533.85-00	PHOTOCOPY SERVICES	INV 054094907 4/1	727.23
										VENDOR TOTAL	727.23 *
600420	AMMONS, AARON										
		5/03/11	04 VR	641-105		453000	5/05/11	641-053-533.07-00	PROFESSIONAL SERVICES	#11-1003 5/1 WORKSH	2,500.00
										VENDOR TOTAL	2,500.00 *
627418	LAMPKINS, SHAWN										
		4/19/11	04 VR	641-88		451863	4/21/11	641-053-533.12-00	JOB-REQUIRED TRAVEL EXP	185 MILE 3/1-30	94.35
		4/19/11	04 VR	641-88		451863	4/21/11	641-053-533.95-00	CONFERENCES & TRAINING	322 MILE 3/11-12	164.22
		4/19/11	04 VR	641-88		451863	4/21/11	641-053-533.95-00	CONFERENCES & TRAINING	PARKING 3/12 CHICAG	24.00
		4/19/11	04 VR	641-88		451863	4/21/11	641-053-533.95-00	CONFERENCES & TRAINING	DINNER 3/11 CHICAGO	36.00
		4/19/11	04 VR	641-88		451863	4/21/11	641-053-533.18-00	NON-EMPLOYEE TRAINING, SEM5	DINNER YOUTH 3/11	180.00
		4/19/11	04 VR	641-88		451863	4/21/11	641-053-533.84-00	BUSINESS MEALS/EXPENSES	DRINKS 3/5 MEETING	7.44
										VENDOR TOTAL	506.01 *
635152	PARSONS, TRACY										
		4/19/11	04 VR	641-87		451871	4/21/11	641-053-533.12-00	JOB-REQUIRED TRAVEL EXP	421 MILE 2/1-3/31	214.71
		4/19/11	04 VR	641-87		451871	4/21/11	641-053-533.95-00	CONFERENCES & TRAINING	TAXI 3/21-22 TAMPA	44.00
		4/19/11	04 VR	641-87		451871	4/21/11	641-053-533.95-00	CONFERENCES & TRAINING	112 MILE BLMNGN	57.12
										VENDOR TOTAL	315.83 *
637820	ROLLINS, JONTE										
		4/12/11	01 VR	641-84		451485	4/14/11	641-053-533.95-00	CONFERENCES & TRAINING	240ML 3/19-23 INDY	122.40

CHAMPAIGN COUNTY

EXPENDITURE APPROVAL LIST

5/05/11

PAGE 11

VENDOR NO	VENDOR NAME	TRN DTE	B N CD	TRANS NO	PO NO	CHECK NUMBER	CHECK DATE	ACCOUNT NUMBER	ACCOUNT DESCRIPTION	ITEM DESCRIPTION	EXPENDITURE AMOUNT
*** FUND NO. 641 ACCESS INITIATIVE GRANT											
		4/12/11	01 VR	641-84		451485	4/14/11	641-053-533.95-00	CONFERENCES & TRAINING	BAGGAGE AA 3/19,23	40.00
		4/12/11	01 VR	641-84		451485	4/14/11	641-053-533.12-00	JOB-REQUIRED TRAVEL EXP	84.5 MILE 3/1-29	43.10
		4/12/11	01 VR	641-84		451485	4/14/11	641-053-533.12-00	JOB-REQUIRED TRAVEL EXP	PARKING 3/4-16	.50
		4/12/11	01 VR	641-84		451485	4/14/11	641-053-533.95-00	CONFERENCES & TRAINING	MTG RFRSHMNT 3/16	16.54
										VENDOR TOTAL	222.54 *
640975	SPIRES, ADRIENNE								ACCESS INITIATIVE		
		4/28/11	01 VR	641-96		452760	4/29/11	641-053-533.95-00	CONFERENCES & TRAINING	AA BAGGAGE 3/10,23	40.00
		4/28/11	01 VR	641-96		452760	4/29/11	641-053-533.95-00	CONFERENCES & TRAINING	SHUTTLE 3/18,23TAMP	23.00
										VENDOR TOTAL	63.00 *
641761	SUMMERVILLE, SHANDRA								ACCESS INITIATIVE		
		4/19/11	04 VR	641-93		451883	4/21/11	641-053-533.12-00	JOB-REQUIRED TRAVEL EXP	61 MILE 1/31-3/15	31.11
		4/19/11	04 VR	641-93		451883	4/21/11	641-053-533.12-00	JOB-REQUIRED TRAVEL EXP	PARKING 2/14 CRT HS	1.00
		4/19/11	04 VR	641-93		451883	4/21/11	641-053-533.95-00	CONFERENCES & TRAINING	GAS 2/26-3/5 ARKANS	139.81
										VENDOR TOTAL	171.92 *
643960	TOMLINSON, JOE										
		4/19/11	04 VR	641-80		451887	4/21/11	641-053-533.07-00	PROFESSIONAL SERVICES	#1002 3/30 HR CNSLT	775.00
										VENDOR TOTAL	775.00 *
									MENTAL HEALTH BOARD	DEPARTMENT TOTAL	40,745.95 *
									ACCESS INITIATIVE GRANT	FUND TOTAL	40,745.95 *
										REPORT TOTAL *****	109,262.72 *



CHAMPAIGN COUNTY BOARD FOR CARE AND TREATMENT  
OF PERSONS WITH A DEVELOPMENTAL DISABILITY

DECISION MEMORANDUM

DATE: May 18, 2011  
TO: Members, Champaign County Mental Health Board  
FROM: Peter Tracy  
SUBJECT: STAFF RECOMMENDATIONS FOR FY12 FUNDING

*“Wide diversification is only required when investors do not understand what they are doing.”  
Warren Buffett*

Intent:

This memorandum is to offer staff recommendations for FY12 (July 1, 2011 through June 30, 2012) funding allocations for the consideration of the Champaign County Mental Health Board (CCMHB). These recommendations are predicated on a thorough evaluation of applications using decision support criteria approved by the CCMHB in November 2010. Final funding decision authority rests with the CCMHB and their sole discretion and judgment concerning the most appropriate and efficacious use of available dollars based on assessment of community needs, best value, alignment with decision support criteria, pricing and affordability and reasonable distribution of funds across disability areas.

Background and Policy Considerations:

Surviving in an Era of Severe Fiscal Austerity: The State of Illinois fiscal situation and outlook for funding of disabilities services remains bleak despite the tax increases passed by the General Assembly. To the extent possible, the CCMHB and CCDDDB have positioned to address the most pressing needs of our community, albeit with a full recognition of serious gaps and deficiencies in our three primary areas of interest caused by State budget cuts and fiscal policies. As a local funding authority, the CCMHB has committed to work with our providers and community stakeholders to identify and support the most critical mission-syntonic programs and services.

Our Commitment to Children’s Mental Health: We have also reaffirmed our intent to sustain the programs which have been identified as our highest priorities. Our cooperative agreement (i.e., the ACCESS Initiative) with the Illinois Department of Human Services (IDHS) and the Substance Abuse and Mental Health Services Administration (SAMHSA) is the salient part of this commitment. We have also continued to partner with mental health, juvenile justice, and education stakeholders to support continuation of the Parenting with Love and Limits, an evidence based practice which is also a major clinical component of the ACCESS Initiative.

Meeting our Obligations for Federal Match: There is also a very strong commitment to allocate FY12 funding to meet our federal match requirements associated with the Substance Abuse and Mental Health Services Administration (SAMHSA) children’s initiative cooperative agreement. In collaboration with the Illinois Department of Human Services (IDHS) Division of Mental



Health, this agreement will require an ongoing commitment to fund programs and services associated with the ACCESS Initiative. In addition, allocation recommendations continue to be influenced by substantive changes in CCMHB policy associated with a commitment to fully implement an evidence based practice in Champaign County. In collaboration with the State's Attorney and the Director of Court Services, the evidence based approach known as Parenting with Love and Limits (PLL) was identified, vetted and implemented. In addition to CCMHB revenue, PLL has been supported by integrated funding from Court Services and the Quarter Cent for Public Safety Fund. All Federal match, including funding for PLL, is identified in the decision section of this memorandum (i.e., Tier Two – Federal Match)

Vigorous Support of our Intergovernmental Memoranda of Understanding: The CCMHB has forged strong partnerships as defined by memoranda with the States' Attorney, Court Services, the Juvenile Detention Center and the Judiciary. We are strongly committed to supporting and enhancing the development of Specialty Courts in Champaign County. In addition, we are working toward coordination of the Quarter Cent for Public Safety fund with CCMHB contracts supporting mental health and substance abuse services for youth and families involved in the juvenile justice system. Our overarching objective will be to ensure full program and service integration through the alignment of a variety of fund sources including Court Services, Quarter Cent for Public Safety, CCMHB, and federal SAMHSA dollars. These dollars are also a component of the Federal Match requirement for the ACCESS Initiative.

Partnership and Collaboration with the Champaign County Developmental Disabilities Board: Our commitment to planning, funding, monitoring, and evaluating developmental disabilities programs and services is cemented in statute and is unwavering. The Memorandum of Understanding with the Champaign County Developmental Disabilities Board (CCDDDB) defines how our mandate is to be implemented. This agreement defines the FY12 allocation for developmental disabilities programs and services, as well as the expectation for integrated planning by the Boards.

**Statutory Authority:**

The Champaign County Mental Health Board (CCMHB) policies on funding are predicated on the requirements of the Illinois Community Mental Health Act (405 ILCS 20 / Section 0.1 et.seq.). All funds shall be allocated within the intent of the controlling act as codified in the laws of the State of Illinois. The recommendations included in this memorandum, opinions and comments are based on our assessment of how closely applications align with statutory mandates, CCMHB funding policies, approved decision support criteria and priorities. Best and Final Offers may be sought as part of the negotiation process for authorized FY12 contracts. The CCMHB reserves the right to refrain from making an award when it is deemed to be in the best interest of the county.

Upon approval by the Board, this memorandum shall become an addendum to the CCMHB funding guidelines incorporated in standard operating procedures.

**Decision Factors and Considerations:**

The approved criteria delineated in this memorandum are to be used as guidance by the Board in assessing applications for CCMHB and ACCESS Initiative funding; however, they are not the sole consideration taken into account in finalizing funding decisions. Other considerations which are included in the decision process are:

1. Opinions about the applicant's ability to implement the program and services proposed.
2. Opinions about the soundness of the proposed methodology(ies).
3. The administrative and fiscal capacity of the agency.
4. Alignment with the CCMHB Three Year Plan, operating principles and public policy positions taken by the Board.
5. Alignment with the ACCESS Initiative funding priorities and Logic Model.
6. Reasonableness of pricing and affordability of applications within the context of available dollars.
7. Best value for the community based on cost and non-cost factors.

The final funding decisions rest solely with the CCMHB and their judgment concerning the most appropriate and efficacious use of available dollars based on assessment of community needs, equitable distribution across disability areas, ACCESS Initiative team recommendations, and decision-support match up. The CCMHB allocation of funding is a complex task predicated on multiple variables. It is important to remember that our allocation process is not a request for proposals (RFP). Applicants for funding are not responding to a common set of specifications, but rather are applying for funding to address a wide variety of mental health, developmental disability and substance abuse treatment needs in our community. In many respects our job is significantly more difficult than simply conducting a RFP. Based on past experience we can anticipate the nature and scope of applications will vary significantly and will include treatment intervention, early intervention and prevention proposals. For these reasons, a numerical rating/selection methodology is not entirely relevant to our particular circumstances. Our focus is on what constitutes a best value to our community based on a combination of cost and non-cost factors, and will reflect an integrated assessment of the relative merits of applications using criteria and priorities approved by the CCMHB and the ACCESS Initiative.

#### Application Caveats:

- The CCMHB reserves the right to vary the provisions set forth herein at any time prior to the execution of a contract where the CCMHB deems such variances to be in the best interest of Champaign County.
- Submission of an application does not commit the CCMHB to award a contract or to pay any costs incurred in the preparation of an application or to pay for any other costs incurred prior to the execution of a formal contract.
- Technical assistance available to applicants will be limited to process questions concerning the application forms, budget forms, application instructions and CCMHB Funding Guidelines.
- Applications which include excessive information beyond the scope of the application format will not be reviewed and at the discretion of staff may be disqualified from consideration. Letters of support for applications are discouraged and if submitted will not be considered as part of the allocation and selection process.

- The CCMHB retains the right to accept or reject any or all applications and reserves the right to refrain from making an award when it is deemed to be in the best interests of the county.
- Applications and submissions become the property of the CCMHB and as such, are public documents that may be copied and made available upon request after allocation decisions have been made, or as deemed appropriate by the CCMHB. Materials submitted will not be returned.
- The CCMHB reserves the right, but is under no obligation, to negotiate an extension of any contract funded under this allocation process for up to a period not to exceed two years with or without additional procurement.
- If selected for contract negotiations, the applicant may be required to prepare and submit additional information prior to final contract execution, in order to reach terms for the provision of services that are agreeable to both parties. Failure to submit required information may result in cancellation of the award of a contract.
- The execution of financial contracts resultant of this application process is dependent upon the availability of adequate funds and the needs of Champaign County.
- The CCMHB reserves the right to further define and add application components as needed. Applicants selected as responsive to the intent of this application process will be given equal opportunity to update proposals for the newly identified components.
- All proposals considered must be received on time at the address indicated and must be responsive to the application instructions. The CCMHB is not responsible for lateness or non-delivery of mail or messenger. Late applications shall be rejected.
- The contents of a successful application will be developed into a formal contract, if selected for funding. Failure of the applicant to accept these obligations can result in cancellation of the award for contract. The CCMHB reserves the right to withdraw or reduce the amount of an award if there is misrepresentation of the applicant's ability to perform as stated in the application.
- The CCMHB reserves the right to negotiate the final terms of any or all contracts with the applicant selected, and any such terms negotiated as a result of this application process may be renegotiated and/or amended in order to meet the needs of Champaign County. The CCMHB also reserves the right to require the submission of any revision to the application, which results from negotiations conducted.
- The CCMHB reserves the right to contact any individual, agency or employer listed in the application or to contact others who may have experience and/or knowledge of the applicant's relevant performance and/or qualifications.
- Final Decision Authority – The CCMHB will make the final decision concerning all applications for funding, taking into consideration staff recommendations, defined decision support criteria, best value, availability of funds and equitable distribution of funds between disability areas.

**The FY12 ACCESS Initiative Process:**

With the inception of the cooperative agreement between the Champaign County Mental Health Board (CCMHB), the Illinois Department of Human Services (IDHS), and the Federal Substance Abuse and Mental Health Services Administration (SAMHSA), we have entered a new chapter in the organization of mental health services for youth and families in our community. The ACCESS Initiative, our community's name for the cooperative agreement, has embarked on the

difficult tasks related to real (i.e., authentic) system change in Champaign County. At the risk of over simplifying, we are working to build a system-of-care for families and youth with serious histories of trauma, emotional disturbance/mental health issues, and multi-system involvement with a focus on the juvenile justice system. The system-of-care is required to be family-driven, youth-guided, strength-based, and culturally competent.

The tasks, activities, goals and objectives assumed by the ACCESS Initiative are inherently and fundamentally different from programs and services historically funded and supported by the CCMHB. The most obvious difference between traditional CCMHB funding and ACCESS Initiative funding is moving from program/service oriented awards to system-oriented awards. The following is a listing of how moving to a system oriented award structure is contrasted from traditional CCMHB allocation targets.

1. System-of-care exceeds the capacities and capabilities of any single provider/agency and is dependent on a shared community vision.
2. Each component of the system-of-care must fit together and be fully integrated with all other components. This means each award decision must be judged on how the application interacts with other separate applications from system partners. Traditionally, CCMHB applications have been evaluated with minimal consideration of other community based programs and services. Collaboration and interagency cooperation have always been encouraged, but for the most part each application was judged in a vacuum as a stand-alone project. System-of-care and “stand-alone” are mutually exclusive terms.
3. Assessing applications within a system-of-care context is exceedingly complex and as a result requires additional steps. For this reason it has been necessary to hold pre-award meetings to accomplish the following objectives and thereby create a level playing field for all potential applicants:
  - Provide a cogent description of the system-of-care philosophy, vision, goals and objectives to assure all applicants have heard and understand the same information.
  - Provide a description of how system-of-care is translated into an ACCESS Initiative logic model which is consistent with SAMHSA system-of-care requirements and also customized and relevant to the idiosyncrasies and characteristics of Champaign County.
  - Provide information about how local match funds from the CCMHB will be integrated with SAMHSA system-of-care dollars to support the ACCESS Initiative Logic Model.
  - Provide an opportunity for all potential applicants to ask questions and receive the same information about system-of-care, the logic model and funding processes.
  - Seek input from applicants and identify legitimate concerns, potential problems and remedies to advance system-of-care implementation.
  - Facilitate opportunities for team building and partnerships between applicants.
  - Provide individual applicant technical assistance regarding how their ideas and creativity can best fit the system-of-care design in Champaign County.

In light of these significant differences, the decision support process for all applications to the ACCESS Initiative system-of-care project which are to be included as a portion of the Federal match requirement shall be subject to the following evaluation principles and steps/components:

1. The Logic Model for the ACCESS Initiative was developed with full family and youth participation and is in essence the road map for the project. This process is a reflection of our commitment to System of Care principles and values including family-driven, youth-guided, culturally competent, trauma informed, evidence based, and strength based.
2. Criteria used for assessing applications and making award recommendations shall be directly tied to the Logic Model and specific ACCESS Initiative Funding Priorities which were provided to all applicants during a required meeting held on January 24, 2011.
3. All applications were rated using the same elements gleaned from the CCMHB funding guidelines, the decision criteria memorandum and the mandatory ACCESS Initiative funding priorities agency meeting held on January 24, 2011.
4. The applications were thoroughly reviewed and discussed by the ACCESS Initiative review team and the composite ratings represent the collective judgment and opinion of this group. The application's alignment with core review criteria and additional review criteria as applicable for the application, along with other factors described in the Decision Memorandum, were used to formulate the funding recommendations contained herein.

### **Basic CCMHB Decision Support and Priorities**

The items included in this section will be heavily weighted in the decision of which applications should receive funding during the FY12 contract year (July 1, 2011 through June 30, 2012). These items are closely aligned with CCMHB planning and needs assessment processes, intergovernmental agreements, memoranda of understandings, and the recommendations of consultants hired by the board. *In addition, Item #1 below is also the primary decision support prioritization for Quarter Cent for Public Safety Juvenile Justice funding for FY12.*

1. **Mental Health and Substance Abuse Services for Youth with Serious Emotional Disturbance (SED) Involved in Juvenile Justice and other child serving systems** – Alignment between Quarter Cent for Public Safety funding, CCMHB funding, and other federal, state and/or local funding streams to accomplish the following objectives:
  - (a) **Parenting with Love and Limits (PLL)** - Continued implementation and expansion of Parenting with Love and Limits (PLL) as a means of assuring clinical efficacy and attainment of desired outcomes for ACCESS Initiative youth and families.
  - (b) **ACCESS Initiative** - In partnership with the Illinois Department of Human Services (IDHS), implementation of the Substance Abuse and Mental Health Services Administration (SAMHSA) Children's Initiative (by subcontract from the IDHS) which includes foci on youth with serious emotional disturbance in the juvenile justice system and implementation of evidence based practice (e.g., Parenting with Love and Limits).

2. **Developmental Disabilities Programs and Services** - Full compliance with the terms and conditions of the Memorandum of Understanding between the CCMHB and the Champaign County Developmental Disabilities Board (CCDDDB). This agreement defines the FY12 allocation for developmental disabilities programs and services, as well as the expectation for integrated planning by the Boards.
  
3. **Specialty Courts** – Full compliance with the terms and conditions of the Memorandum of Understanding between the CCMHB and the Champaign County Board pertaining to the Champaign County Drug Court. Access to substance abuse programs, services, supports and incentives for Champaign County Drug Court clients shall be prioritized as an area of emphasis. Planning and implementation of Champaign County Mental Health Court and access to appropriate programs and services for participants.
  
4. **Integration of Physical and Behavioral Health Programs and Services** – Alignment with programs and services focusing on the integration of physical and behavioral health, as well as collaborations between the CCMHB, CCDDDB, the Champaign County Public Health Department, and the Champaign Urbana Public Health District. Currently we are co-funding a perinatal depression program (i.e., Beyond Blue), and to the extent possible, this program should continue to receive our support as a tangible demonstration of our commitment to the concept of physical and behavioral health integration.
  
5. **Gaps in Core Services Related to State of Illinois Budget Cuts:** Applications which specifically address state-funded core services which have sustained major funding reductions shall continue to be considered as high priority of CCMHB FY12 funding. As mentioned in the overview section of this memorandum, the full extent of IDHS budget cuts may not be known until after the application deadline. This means all applications will likely be subject to significant contract negotiation (e.g., budget and program plan).

### **Overarching Decision Support Considerations**

The FY12 CCMHB allocation process will require all applications to address the overarching criteria listed below. Assessment of all FY12 applications will focus on alignment with these overarching criteria.

1. **Underserved Populations** - Programs and services that promote access for underserved populations identified in the Surgeon General’s Report on Mental Health: Culture, Race, and Ethnicity and the consultation with Carl Bell, M.D.
2. **Countywide Access** - Programs and services that promote county-wide access for all people in Champaign County. Zip code data is mandated.
3. **Medicaid Reimbursement** - Programs and services eligible for participation in the Medicaid Community Mental Health Services Program (i.e., Part 132) and Medicaid services for people with substance abuse treatment needs and developmental disabilities.
4. **Budget and Program Connectedness** - Applications that clearly explain the relationship between budgeted costs and program components receive additional

consideration. “What is the Board buying?” is the salient question that must be answered in the proposal, and clarity is required.

### **Secondary Decision Support and Priority Criteria**

The process items included in this section will be used as important discriminating factors which influence final allocation decision recommendations. The CCMHB uses an on line system for agencies interested in applying for funding. An agency must complete the one-time registration process including the Organization Eligibility Questionnaire before receiving access to the on line application forms.

Minimal responsiveness: Applications that do not meet these thresholds are “non-responsive” and were to be returned to the applicant. All agencies must be registered using the on line system. The application(s) must be completed using the on line system.

1. Eligible applicant – based on the Organization Eligibility Questionnaire.
2. Compliance with the application deadline. Late applications will not be accepted.
3. Application must relate directly to mental health, substance abuse or developmental disabilities programs and services.
4. Application must be appropriate to this funding source and shall provide evidence that other funding sources are not available to support this program/service.

Approach/Methods/Innovation: Applications proposing evidence based or research based approaches, and in addition address fidelity to the specific model cited. Applications demonstrating creative and/or innovative approaches to meet defined community need will receive additional consideration.

Staff Credentials: Applications that address and highlight staff credentials and specialized training will receive additional consideration.

Application Quality: Applications will be evaluated based on the criteria listed below. It is recognized that a rating system of this type allows for a level of subjectivity. In addition, comparison of applications from different organizations also influences individual ratings (i.e., “grading on a curve”). If the quality of an organization’s applications is exceptionally high, this tends to “raise the bar” to a higher level of expectation for all applications.

- High compliance applications were judged to have fully addressed all of the requirements of the application process.
- Moderate compliance applications covered all requirements but were conceptually lacking in detail.
- Needs improvement applications attempted to address all requirements but fell short in some areas.
- Unresponsive applications either did not address requirements or were inappropriately priced.

### Contract Negotiation Considerations For All FY12 Awards

All recommendations included in the decision section of this memorandum are provisional with funding contingent on the completion of successful contract negotiation. This can include significant modification of the budget, program plan, and personnel matrix in order to align the contract more closely with CCMHB planning, ACCESS Initiative planning and logic model alignment, and budget and policy specifications. The applicant may be required to prepare and submit additional information prior to final contract execution, in order to reach terms for the provision of services that are agreeable to both parties. Failure to submit required information shall result in cancellation of the award of a contract. As a component of the contract development process, all applications approved for funding may be subject to reductions for the conferences/conventions/meetings, associated travel budget lines.

### Special Notification Concerning All FY12 Awards

**The recommendations in this decision memorandum are based on revenue estimates which will not be finalized until the CCMHB budget is approved by the Champaign County Board in November 2011. For this reason all FY12 CCMHB and ACCESS Initiative contracts shall respectively be subject to possible reductions in contract maximums necessary to compensate for any CCMHB revenue shortfall. These reductions shall be documented by contract amendment at the discretion of the CCMHB executive director with every effort made to maintain the viability and integrity of contracts listed in Tiers 1, 2, and 3. The FY12 contract boilerplate shall also include the following provision:**

*Obligations of the Board will cease immediately without penalty or further payment being required if in any fiscal year the tax that is levied, collected and paid into the "Community Mental Health Fund" or grant/cooperative agreement revenue and cash flow from the Illinois Department of Human Services is judged by the CCMHB executive director not to be sufficient for payment as delineated in the terms and conditions under this Contract.*

### Decision Section

The staff recommendations are organized into five "Tiers" in order to delineate the connection between our recommendations and decision support criteria and source of funding (i.e. revenue). Federal match associated with the SAMHSA/IDHS Cooperative Agreement is broken out. The tiers are also used to organize applications in order of priority based on decision support criteria match up and a variety of other factors outlined in this memorandum. For additional information concerning specific applications, please refer to the Application Summaries presented at the April 2011 CCMHB Meeting.

### **TIER ONE: Core Programs and Services – Fund Source CCMHB**

The groups below are highly prioritized by the CCMHB and include developmental disabilities, mental health, and substance use disorders associated with memoranda of understanding (MOU) and strong alignment with decision support criteria.



Group One: Developmental Disabilities (includes the MOU required 2.5% increase)

Community Choices – Self-Determination Support

\$ 22,500

Developmental Services Center – Family Development Center

\$211,795

Developmental Services Center – Developmental Training / Employment Services

\$295,557

Group Two: Other Memoranda of Understanding

Community Elements, Inc. - Adult Recovery: CJ & Specialty Courts

\$150,930

Crisis Nursery - Beyond Blue Champaign County

\$70,000

Prairie Center Health Systems, Inc. - Drug Court

\$165,000

Group Three: Core Mental Health and Substance Use Disorder Programs and Services

Community Elements, Inc. - Crisis, Access, Benefits, & Engagement

\$188,985

Community Elements, Inc. - Early Childhood Mental Health & Dev.

\$114,500

Community Elements, Inc. - Non-Medicaid Mental Health Initiative

\$30,132

Community Elements, Inc. - Psychiatric Services

\$41,200

Community Health Improvement Center, Frances Nelson Health Center Satellite –  
Mental Health Services at Frances Nelson

\$148,774

Prairie Center Health Systems, Inc. - Youth Services

\$100,000

**TIER TWO: Federal Match – Fund Source CCMHB and Quarter Cent for Public Safety**

The Cooperative Agreement between the CCMHB, the University of Illinois, SAMHSA, and IDHS has a substantial Federal match requirement. The Illinois Department of Human Services (IDHS) is the recipient of the cooperative agreement funding and subcontracts with the Champaign County Mental Health Board (CCMHB) for implementation of the program components of the agreement and the University of Illinois for the local and national evaluation. The entire match requirement is the responsibility of the CCMHB with assistance from our community partners, and is based on investments (revenue originating from property tax and

sales tax) which are used to fund diversion and treatment services for the ACCESS Initiative population of interest.

Group One: Quarter Cent for Public Safety and CCMHB Revenue

The recommendations identified in Group One include our jointly funded evidence based practice and juvenile justice diversion projects. These applications were thoroughly reviewed by the Quarter Cent Administrative Team. This team is comprised of ACCESS Initiative and CCMHB staff, the States' Attorney, and other juvenile justice stakeholders and the recommendations below represent their collective judgment.

Champaign County Regional Planning Commission – ACCESS Initiative Court Diversion

\$141,302 (Quarter Cent Sales Tax Revenue)

Don Moyer Boys and Girls Club – ACCESS Initiative JUMP

\$70,000 (Quarter Cent Sales Tax Revenue)

Savannah Institute – Parenting with Love and Limits

\$128,000 (CCMHB Contractual Line)

Community Elements – ACCESS Initiative Parenting with Love and Limits – Front End

\$272,000 (CCMHB Revenue)

Don Moyer Boys and Girls Club – ACCESS Initiative Parenting with Love and Limits – Extended Care

\$272,000 (CCMHB Revenue)

Group Two: ACCESS Initiative Programs and Services funded with CCMHB Revenue

The applications identified in Group Two include ACCESS Initiative Universal Prevention programs and were thoroughly reviewed and discussed by the ACCESS Initiative review team. The composite recommendations represent the collective judgment and opinion of the team.

Don Moyer Boys and Girls Club – ACCESS Initiative Smart Moves (Champaign)

\$40,000

Mahomet Area Youth Club – ACCESS Initiative Teen Succeed (Mahomet)

\$17,800

SOAR Youth Programs – ACCESS Initiative SOAR (Rantoul)

\$17,800

Urbana Neighborhood Connections Center – ACCESS Initiative Community Study Center (Urbana)

\$17,800

Group Three: ACCESS Initiative Programs and Services to be funded with CCMHB Revenue

The applications identified in Group Three were thoroughly reviewed and discussed by the ACCESS Initiative review team and the following represents the collective judgment and opinion of this group. **These applications were determined not to have sufficient alignment with core review criteria to merit funding as written.**

The following applications (i.e., applicants) will be given an equal opportunity to prepare and submit updated proposals which reflect and align with system of care development, Wraparound processes, and the ACCESS Initiative Logic Model. Failure to participate in required pre-award

activities and failure to submit required information will eliminate the applicant from further consideration. Local revenue (CCMHB) totaling up to \$420,474 will be set aside to fund new proposals.

Best Interest of Children – ACCESS Initiative Family Conference of Champaign County  
Best Interest of Children – ACCESS Initiative Family Link and Support  
Best Interest of Children – ACCESS Initiative Youth Move  
Champaign Urbana Area Project – ACCESS Initiative Time Bank  
Champaign Urbana Area Project – ACCESS Initiative Restorative Justice Network  
Don Moyer Boys and Girls Club – ACCESS Initiative Infrastructure  
Family Advocacy of Champaign County – The ACCESS Point  
Prairie Center Health Systems – ACCESS Initiative Youth Case Management  
Talks Mentoring – ACCESS Initiative Men of Force  
Talks Mentoring – ACCESS Initiative Women of Wisdom  
University of Illinois Psychological Services Center – ACCESS Initiative Advocacy Program  
University of Illinois Psychological Services Center – ACCESS Initiative Restorative Circles  
University of Illinois Psychological Services Center - Parole/Probation Assess and Treat (PAT)  
Urbana Neighborhood Connections Center – ACCESS Initiative UNCC-HUB/Community Home

**TIER THREE: ACCESS Initiative System of Care Implementation – Fund Source SAMHSA/IDHS**

Tier Three includes recommendations pertaining to the allocation of SAMHSA/IDHS funding designated for system of care development and implementation.

Group One

The applications identified in Group One were thoroughly reviewed and discussed by the ACCESS Initiative review team, and the composite recommendations represent the collective judgment and opinion of this group.

Community Elements – ACCESS Initiative School Based  
\$106,000

Group Two

The applications identified in Group Two were thoroughly reviewed and discussed by the ACCESS Initiative review team and the following represents the collective judgment and opinion of this group. **These applications were determined not to have sufficient alignment with core review criteria to merit funding as written.**

The following applications (i.e., applicants) will be given an equal opportunity to prepare and submit updated proposals which reflect and align with system of care development, Wraparound processes, and the ACCESS Initiative Logic Model. Failure to participate in required pre-award activities and failure to submit required information will eliminate the applicant from further consideration. Federal revenue of up to \$494,000 will be set aside to fund new proposals.

Best Interest of Children – ACCESS Initiative Family Conference of Champaign County  
Best Interest of Children – ACCESS Initiative Family Link and Support

Best Interest of Children – ACCESS Initiative Youth Move  
Champaign Urbana Area Project – ACCESS Initiative Time Bank  
Champaign Urbana Area Project – ACCESS Initiative Restorative Justice Network  
Don Moyer Boys and Girls Club – ACCESS Initiative Infrastructure  
Family Advocacy of Champaign County – The ACCESS Point  
Prairie Center Health Systems – ACCESS Initiative Youth Case Management  
Talks Mentoring – ACCESS Initiative Men of Force  
Talks Mentoring – ACCESS Initiative Women of Wisdom  
University of Illinois Psychological Services Center – ACCESS Initiative Advocacy Program  
University of Illinois Psychological Services Center – ACCESS Initiative Restorative Circles  
University of Illinois Psychological Services Center - Parole/Probation Assess and Treat (PAT)  
Urbana Neighborhood Connections Center – ACCESS Initiative UNCC-HUB/Community Home

**TIER FOUR: Other Mental Health and Substance Use Disorder Programs – Fund Source CCMHB**

The applications and corresponding recommendations listed below were thoroughly reviewed and discussed by CCMHB staff. These applications are partially aligned or marginally aligned with decision support criteria, but are being recommended for funding.

Group One: Mental Health and Substance Use Disorders Programs and Services

Catholic Charities of the Diocese of Peoria - Family Counseling Program  
\$8,000  
The Center for Women in Transition - A Woman's Place  
\$66,948  
Family Service of Champaign County – Counseling  
\$50,000  
Family Service of Champaign County - Self-Help Center  
\$28,428  
Prairie Center Health Systems, Inc. - Prevention Program  
\$56,550  
Rape Advocacy, Counseling, & Education Services - Counseling & Crisis Services  
\$15,152

Group Two: Ancillary Program and Services

Champaign County Children's Advocacy Center - Children's Advocacy Center  
\$37,080  
Champaign County Regional Planning Commission-Social Services - Senior Services  
\$ 26,026  
Community Elements, Inc. - TIMES Center (Screening MI/SA)  
\$48,000  
Community Service Center of Northern Champaign County - First Call for Help  
\$82,474  
East Central Illinois Refugee Mutual Assistance Center -  
Family Support & Strengthening  
\$12,000

Family Service of Champaign County - Senior Counseling & Advocacy  
\$142,337  
Family Service of Champaign County - First Call for Help  
\$60,540

**TIER FIVE: APPLICATIONS NOT RECOMMENDED FOR FUNDING**

These applications were judged to be of significant value to the community, however did not align well with CCMHB, Quarter Cent and ACCESS Initiative FY12 decision support criteria. In addition, this group includes applications which are not affordable due to the limitations of anticipated CCMHB revenue parameters.

- Best Interest of Children – ACCESS Initiative Effective Black Parenting
- Champaign County Regional Planning Commission – ACCESS Initiative Parenting with Love and Limits – Front End
- Champaign Urbana Area Project – Emotional Fitness Quotient System
- Community Elements – To Good for Drugs And Violence
- Community Elements – ACCESS Initiative Parenting with Love and Limits – Extended Care
- Don Moyer Boys and Girls Club – ACCESS Initiative Clinical Coordinator
- Family Advocacy of Champaign County – ACCESS Initiative Why We Can’t Wait
- Prairie Center Health Systems, Inc. - Operation Snowball
- Talks Mentoring - TALKS Mentoring
- University of Illinois – Psychological Services Center – ACCESS Initiative Effective Black Parenting
- Urbana Neighborhood Connections Center – ACCESS Initiative POWER

**DECISION SECTION**

Motion to approve CCMHB funding as recommended for Tier One as presented in this memorandum:

- \_\_\_\_\_ Approved
- \_\_\_\_\_ Denied
- \_\_\_\_\_ Modified
- \_\_\_\_\_ Additional Information Needed

Motion to approve CCMHB funding and Quarter Cent for Public Safety funding designated as Federal match as recommended in Tier Two as presented in this memorandum:

- \_\_\_\_\_ Approved
- \_\_\_\_\_ Denied
- \_\_\_\_\_ Modified
- \_\_\_\_\_ Additional Information needed

Motion to approve SAMHSA/IDHS funding as recommended for ACCESS Initiative System of Care implementation as recommended in **Tier Three** as presented in this memorandum:

- Approved
- Denied
- Modified
- Additional Information needed

Motion to approve CCMHB funding as recommended for **Tier Four** as presented in this memorandum:

- Approved
- Denied
- Modified
- Additional Information needed

Motion to deny CCMHB, SAMHSA/IDHS and Quarter Cent funding for all items delineated in **Tier Five** as presented in this memorandum:

- Approved
- Denied
- Modified
- Additional Information needed

Motion to authorize the executive director to conduct and complete contract negotiation as specified in this memorandum:

- Approved
- Denied
- Modified
- Additional Information needed

Motion to authorize the executive director to implement contract maximum reductions as described in the “Special Notification Concerning FY12 Awards” section of this memorandum (see below):

- Approved
- Denied
- Modified
- Additional Information needed

**Special Notification Concerning All FY12 Awards**

**The recommendations in this decision memorandum are based on revenue estimates which will not be finalized until the CCMHB budget is approved by the Champaign County Board in November 2011. For this reason all FY12 CCMHB and ACCESS Initiative contracts shall respectively be subject to possible reductions in contract maximums necessary to compensate for any CCMHB revenue shortfall. These reductions shall be documented by contract amendment at the discretion of the CCMHB executive director**

with every effort made to maintain the viability and integrity of contracts listed in Tiers 1, 2, and 3. The FY12 contract boilerplate shall also include the following provision:

*Obligations of the Board will cease immediately without penalty or further payment being required if in any fiscal year the tax that is levied, collected and paid into the "Community Mental Health Fund" or grant/cooperative agreement revenue and cash flow from the Illinois Department of Human Services is judged by the CCMHB executive director not to be sufficient for payment as delineated in the terms and conditions under this Contract.*

# Louder Than a Bomb

Film screening sponsored by: Champaign County Anti-Sigma Alliance

## From heartbreak to hope in the art of a poem

By Roger Ebert

Poetry slams began in Chicago in 1984 and have become an international phenomenon without most people probably having heard of them. They're poetry readings as a spectator sport. Individuals and teams are scored by judges on the Olympic 10-point scale, but while Olympic diving judges claim to be looking at specific elements in a dive, slam judges are responding to emotion, charisma and--well, poetry. Some slammers are also rap artists, but slam and rap and different art forms, and slammers rely only on their voices.

"Louder Than a Bomb" is about the 2008 Chicago-area slam of the same name, the nation's largest. Teams and soloists from 60 high schools compete, and the finalists face off in a city-wide slam that fills a theater usually used for rock concerts. The suspense that year initially centered on Steinmetz, a troubled inner city school that had never entered before it won the 2007 Bomb in a thrilling upset. Can Steinmetz and its coach, James Sloan, repeat?

The film was directed by Greg Jacobs and Jon Siskel (Gene's nephew), who followed several competitors for months and guessed well in choosing those they focused on. The 2008 Steinmetz team had some gifted repeaters, and we also meet three outstanding solo talents:

- Nova Venerable from Oak Park/River Forest High School, who helps her mom with the complex needs of a disabled kid brother and then writes about that and her absent father.
- Nate Marshall from Whitney Young Magnet High School, whose parents were addicts but who, when asked to choose between basketball and poetry, chose words and masters them with almost bewildering fluency.
- Adam Gottlieb, from Northside College Prep, whose poems are so joyous and whose performances so charismatic that he makes it possible to think of a slammer as a rock star.
- The Steinmetz team, calling themselves the Steinmenauts, are Lamar Jordan, Kevin Harris, Jesús Lark, Charles Smith, and She'Kira McKnight. They develop artistic



Greg Jacobs and Jon Siskel, directors of "Louder Than a Bomb."

and personal differences that Coach Sloan helps them work out during tense scenes. When they triumphantly appear on stage, their very presence is a tribute to their poetry.

Siskel and Jacobs focus on the performances, which are inspiring and electrifying. Their film left me wondering why American television must be so gutless and shallow. If these kids and others like them were programmed against America Idol or Dancing With the Stars, the shabbiness of those shows would be placed in dramatic contrast. Here are real performers with real feelings and important things to say.

I hesitate to hint about the outcome of the contest, nor to



The Steinmetz team in a scene from "Louder Than a Bomb."





Louder Than a Bomb

steal some of the thunder and surprises from the performers. I'll end on this. After "Louder Than a Bomb" plays theatrically, it will air on the Oprah Winfrey Network. Why doesn't Oprah consider it a pilot for a series? America's Got Talent, all right, but maybe we've been looking for it in the wrong places. *minireview*

"Louder Than a Bomb" (Unrated, 100 minutes). Chicago's annual city-wide poetry slam competition involves teams or performers from 60 high schools, and the finals, called Louder Than a Bomb, are like a rock concert crossed with a basketball tournament. We meet the team from Steinmetz, hoping to repeat as city champions, and poets from Whitney Young, Oak Park/River Forest, and Northside College Prep. Inspiring and electrifying. Directed by Greg Jacobs and Jon Siskel (Gene's nephew).

*Here are real performers with real feelings and important things to say.*



*Nova Venerable in a scene from "Louder Than a Bomb."*

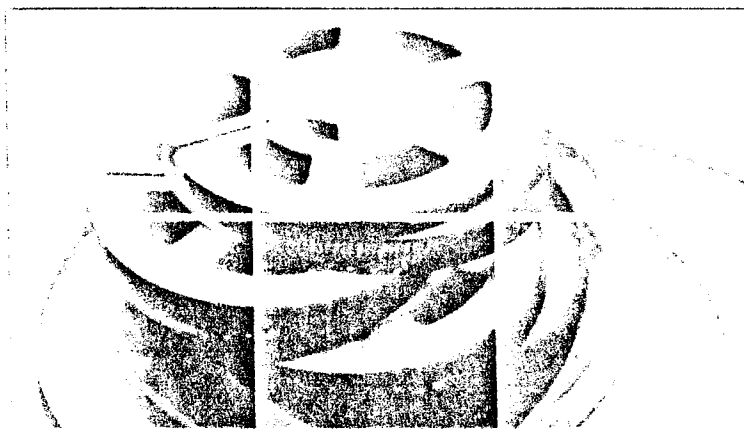
## BEHIND THE SCENES

**LOUDER THAN A BOMB**  
(2010) No MPAA rating

Directed by  
Greg Jacobs and Jon Siskel

Featuring:  
Kevin Coval, Adam Gottlieb,  
Elizabeth Graf, Kevin Harris,  
John Hood, Lamar Jorden, Peter  
Kahn, Jesús Lark, Nate Marshall,  
She'Kira McKnight, Preye Porri,  
James Sloan, Charles Smith,  
Robbie Q. Telfer and Nova  
Venerable

Running time: 100 minutes  
Print Courtesy: Siskel/Jacob  
Productions

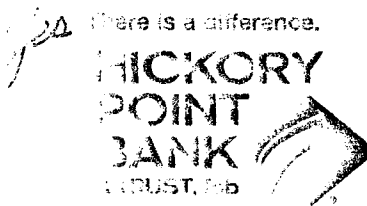


### Investing more than money

At Hickory Point Bank & Trust, we believe it takes more than money to make the world go around. That's why we're proud to support Ebertfest.



Equal Housing Lender



www.hickorypointbank.com  
11 Covington Drive • Channahon • 815-551-7100

LOGIN Create new account Login problems?

Search:

Our Sites

## BROWSE THE BUSINESS DIRECTORY

Find a business:

**The News-Gazette**  
SERVING EAST CENTRAL ILLINOIS

News | Sports | Entertainment | Multimedia | Community  
Opinions | Classified | Shop | Subscribe  
Help



**READ ALL ABOUT IT!**  
*on your home computer.*

**Every page. Every story. Click here to start your online subscription now.**

Home

## Documentary started with 'strange diversity'

Wed, 04/27/2011 - 8:00am | Melissa Merli

CHAMPAIGN -- Chicago filmmaker Greg Jacobs and his wife were driving by the Metro concert hall one Saturday night in 2005 when something caught his attention: the line of people waiting to get into the Louder Than a Bomb poetry slam finals.

It was made up of teens of all shapes, sizes and colors.

"It was just a very strange diversity for the North Side of Chicago for high school kids and on a Saturday night there to see poetry," Jacobs later said in a Media Impact video interview.

"It also meant there were kids on stage doing their poetry, performing and reading their own work in front of their peers, which is something I would never have been caught dead doing in high school."

That "strange combination" led Jacobs to mention to his filmmaking partner Jon Siskel that the poetry slam might be a good subject for a documentary. Siskel agreed.

Now, six years later and one year after "Louder Than a Bomb" was released, the two will bring the 99-minute documentary to Roger Ebert's Film Festival, which begins today (Wednesday) and ends Sunday at the Virginia Theatre in Champaign.

The documentary, which will close the festival on Sunday, tells the story of four Chicago high school poetry teams as they prepare for the Louder Than a Bomb poetry slam.

After the screening, which starts at noon, Siskel, Jacobs and Kevin Coval, founder and artistic director of the Louder Than a Bomb poetry slam, will go on stage to talk about the documentary. Five Steinmetz High School poets from Chicago will perform as well.

"Louder Than a Bomb" was something of a departure for Siskel and Jacobs. They founded Siskel/Jacobs Productions in 2005 with the focus on making TV documentaries.

Before starting on "Louder," they had begun producing for the History Channel "102 Minutes That Changed America," which reconstructed in real time the events of Sept. 11, 2001, in New York. It won several awards, among them three prime-time Emmys.

Other made-for-TV documentaries produced by Siskel/Jacobs include one about the 9/11 attack on the Pentagon, another about Hurricane Katrina, and a recent one on the earthquake/tsunami in Japan.

TV documentaries, Siskel and Jacobs said in a telephone interview from Chicago, have shorter production calendars than the five years they spent on "Louder Than a Bomb."

Once they decided to make it, they reached out to Coval, who introduced them to many of the 40 Louder Than a Bomb poetry teams in the Chicago area. The filmmakers narrowed the list to a dozen.

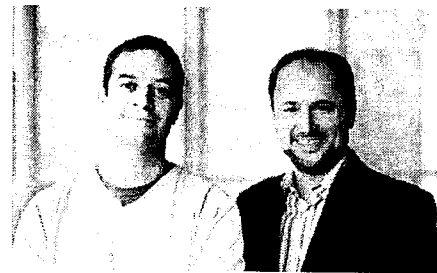


Photo by: Provided

Jon Siskel, left, and Greg Jacobs.

### Other Related Content

- [Alliance will repeat film after fest ends](#)

For over a year, they visited those schools and hung with the students and poetry-slam coaches. They then narrowed the teams to four and spent eight months shooting them and two years editing the footage.

The two finished the documentary on March 25, 2010, and premiered it before 250 teenagers two days later.

"The kids stood up," Jacobs said. "They said it was the best true-story movie they'd ever seen. It connects to kids in a way most documentaries don't. Teachers say they're emotional and passionate about the film, and the teachers are too."

Indeed, the two see high schools students and teachers as their core audiences.

Siskel and Jacobs also want to see Louder Than a Bomb poetry slam competitions in cities nationwide. They have already visited Tulsa, Okla., to help Coval establish one there, and have received requests from other cities.

Siskel and Jacobs, who have shown "Louder Than a Bomb" at festivals nationwide, are "thrilled" to bring it to Ebertfest 2011.

"I just think it's amazing what Roger and Chaz put together; we're just honored to be part of that group," Siskel said.

Siskel, of course, is a nephew of the late Chicago Tribune movie critic Gene Siskel, who was Ebert's TV partner on "Siskel & Ebert at the Movies."

"Growing up around him, going to movies with him, definitely made me a huge fan of film and movies," Jon Siskel said of his uncle. "Also he just had a big role in guiding me in my career. I had a moment when I was doing writing for newspapers and magazines. He knew of an opportunity coming up to get into TV and film and made an introduction and I moved out to Los Angeles. I started from there."

[Login](#) or [register](#) to post comments



Categories (4): News, Community Events, Film, Arts and Entertainment

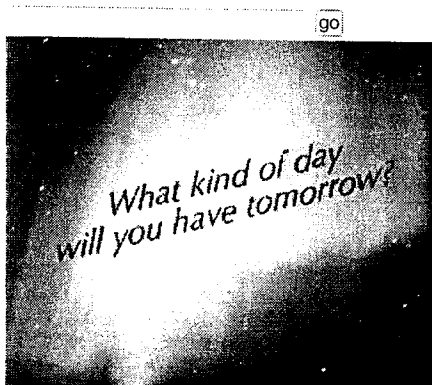
Location (4): Champaign County, Champaign, Local, Urbana

## Comments

*News-Gazette.com embraces discussion of both community and world issues. We welcome you to contribute your ideas, opinions and comments, but we ask that you avoid personal attacks, vulgarity and hate speech. News-Gazette.com reserves the right to remove any comment at its discretion, and we will block repeat offenders' accounts. To post comments, you must first be a registered user, and your username will appear with any comment you post. Happy posting.*

[Login](#) or [register](#) to post comments

## Search News Stories



## More Like This

- Ohio town in documentary reminds Ebert of Urbana
- Alliance will repeat film after fest ends
- Jewison visiting C-U for annual film festival
- Ebert couldn't resist adding a 13th entry to his annual film festival
- 2011 Roger Ebert's Film Festival schedule
- Ebert brings Linklater, Welles film to town

LOGIN Create new account Login problems?

Search:

Our Sites

## BROWSE THE BUSINESS DIRECTORY

Find a business:

**The News-Gazette**  
SERVING EAST CENTRAL ILLINOIS

News | Sports | Entertainment | Multimedia | Community  
Opinions | Classified | Shop | Subscribe  
Help



Sudoku Battleships  
Hashi KAKURU  
Crosswords and more...



Home

## Alliance will repeat film after fest ends

Wed, 04/27/2011 - 8:00am | Melissa Merli

CHAMPAIGN — If you miss "Louder Than a Bomb" during Eberfest, you will have another chance to see the documentary on Sunday, right after Roger Ebert's Film Festival ends at the Virginia Theatre.

### Other Related Content

- Documentary started with 'strange diversity'

The Champaign County Anti-Stigma Alliance, a major Eberfest sponsor, is not only sponsoring the "Bomb" festival screening but also will show the doc right after the festival ends, around 4 p.m. That screening will be free and open to the public; tickets to the Eberfest screening, starting at noon, are \$13 each.

After both, filmmakers Jon Siskel and Greg Jabobs and Kevin Coval, founder and artistic director of the Louder Than a Bomb poetry slam, will be on stage to discuss the 99-minute documentary about four Chicago high school teams preparing for and competing in the Louder Than a Bomb poetry slam.

Joining them after the Eberfest screening will be five Steinmetz High School student poets. Local young poets will perform on stage as well after the Anti-Stigma Alliance screening.

The local poets are involved in ACCESS Initiative, which focuses on families and youths with mental-health issues and involvement in the juvenile-justice system.

Login or register to post comments



Categories (4): News, Community Events, Film, Arts and Entertainment

Location (4): Champaign County, Champaign, Local, Urbana

Tags (1): Eberfest

### Comments

*News-Gazette.com embraces discussion of both community and world issues. We welcome you to contribute your ideas, opinions and comments, but we ask that you avoid personal attacks, vulgarity and hate speech. News-Gazette.com reserves the right to remove any comment at its discretion, and we will block repeat offenders' accounts. To post comments, you must first be a registered user, and your username will appear with any comment you post. Happy posting.*

Login or register to post comments

### Search News Stories

LOGIN Create new account Login problems?

Search:

Our Sites

## BROWSE THE BUSINESS DIRECTORY

Find a business:

**The News-Gazette**  
SERVING EAST CENTRAL ILLINOIS


News | Sports | Entertainment | Multimedia | Community  
Opinions | Classified | Shop | Subscribe  
Help



Home

## Teens are raising their voices in poetry showcase

Sat, 04/30/2011 - 8:30am | Julie Wurth

 Poetry isn't the most popular hobby among high school students, Jazzlyn Carter confesses, but she is now an official convert.

The 14-year-old Urbana High School freshman is one of 15 teens taking part in a poetry showcase organized by the Champaign County ACCESS Initiative to demonstrate the importance of family and youth involvement in the children's mental health movement.

Several of the teens will also perform at a "poetry slam" at the Virginia Theatre on Sunday after a free screening of "Louder Than a Bomb," a documentary about four Chicago high school teams competing with many others in a poetry slam.

The idea is to give teens a voice about issues that concern them, leading up to Children's Mental Health Awareness Week, which starts Sunday, said their coach, Aaron Ammons.

Domestic violence, bullying and other stressors affect teens' mental health, said Ammons, a local author and poet.

"This is about young people using the expression of the spoken word in poetry to deal with issues that they face as teens," he said. "They're using this creative expression and using their voice in a positive way and to help other people. That's what we're trying to celebrate here."

The ACCESS Initiative focuses on families and youths with mental-health issues and involvement in the juvenile-justice system.

Organizers recruited teens for the poetry project through area high schools and other organizations.

The students worked with Ammons to choose topics centered on trauma and resilience, ranging from suicide to homosexuality to peer pressure and learning disabilities. They attended five two-hour workshops where they watched "Louder Than a Bomb" and worked on their own poems, listening to each other perform and critiquing each other's work.

"This is not a contest. The point is the poetry and the relationships they build with the other students," Ammons said. "That sort of camaraderie, that's what we're really working on."

Carter is an aspiring songwriter who didn't think she'd be much of a poet until she got involved with the project. She's written gospel songs and other music, but the spoken word is "deeper," with no music to distract the listener, she said. The focus is purely on the words.

"I didn't feel like I would be good at writing a poem," Carter said, but she surprised herself. The writing came easily, and she put together her poem in three short bursts of creativity.



Photo by: Darrell Hoemann/The News-Gazette

Several members of a local poetry slam workshop pose for a photo Friday during a rehearsal at the Don Moyer Boys and Girls Club in Champaign. The group includes, top row from left, Reno Hines, Kamron Haley, Lonnie Johnson, Dante Scott and Keosha Gaines and, bottom row, Collette Harmon (wearing yellow), Jazzlyn Carter, Tamarra Likens, Deandre Lemons and Marshall Allston-Yeagle.

Her poem, "Murder of the Soul," describes how "violence is deeper than physical. You can murder someone on the inside with what you say," she said. Her goal is to encourage people to "watch what you say."

Carter said she didn't draw on any particular experience in her own life, though she says she has been hurt by words at times.

"It just came to me. It seems like this was something inside of me. I'm not sure exactly what it is. I just know your words can hurt people, especially at a young age. It soaks in," she said.

She reads her poem like a rap song, with strong emotion. The other teens encouraged Carter to "go deeper" after hearing the first section she wrote, and she did, invoking images of crime in later passages. She said the other teens were "speechless" when they heard the finished product.

The two-minute poem begins:

"I fight through this and I look around

seeing the things that try to hold us down

We say it's murder, and drugs,

from all those so-called thugs

but tell me what that really means

Tell me what you see in between

The lines of the words on my computer screen."

And later:

"The fact that you crush my soul feel no remorse for the sin?

You know what, that makes you worse than the dealer

more dangerous than that serial killer.

And worse than that murderer out there on the streets.

'Cause your words are like bullets and you're right in front of me."

Carter, who sings and plays the piano, has hopes of becoming a singer-songwriter some day, though she may go to medical school or law school as a "backup."

"I'm a performer at heart," she said.

She plans to keep up with the poetry, too, to help with her songwriting. She thinks the project was valuable because teens don't give much thought to poetry otherwise.

"Poetry really reaches people in a way nothing else can. You're not going to change people like this in a song. It just opens people's eyes and gets them to understand something new," she said.

Three of the students will perform at 6 p.m. Sunday at the Virginia Theatre following the free showing of "Louder Than a Bomb" at 4 p.m. by the Champaign County Anti-Stigma Alliance. (The film will also be shown at noon, by paid admission, as part of Ebertfest, and five Chicago Steinmetz High School poets will perform after both showings.)

All 15 local teen poets will also perform at two other free public venues:

7:30 to 9:30 p.m. today at the Independent Media Center, 202 S. Broadway Ave., U, as part of a "Poetry for the People Slam" with youth and adult performers.

6 to 8 p.m. Thursday at the "Teen SPEAK" Cafe at the Independent Media Center, coordinated by Ammons.

Besides Carter, the participants are: Keosha Gaines, Meaguell Gaines, Kamron Haley, Collette "Co-Co" Harmon, Tamarra Likens, Nailah Davis, Dante Scott, Lonnie Johnson, Marshall Allston-Yeagle, Summir Evans, Jemika Butler, Deandre Lemons, Rashod Fly and Preston Roseborough.

Login or register to post comments



Categories (2):

**“Reaching Out For Answers:  
Disability Resource Expo”  
Progress Report  
May, 2011**

The 5<sup>th</sup> annual Disability Resource Expo will be held on Saturday, October 22 at Lincoln Square Village in Urbana.

Eleven members of the Expo Steering Committee met for the first time this planning year on April 12. I'm pleased, again, to report that this group has maintained a consistent membership, with most members being with us since the inception of the Expo in 2007. We did welcome one new member, Diane Baker of Worn Jerabek Architects.

Members spent some time reviewing the participant and exhibitor evaluations from the 2010 Expo, and will utilize this input as we plan for the 2011 Expo.

The Exhibitor Committee met on May 10 to begin to identify potential new exhibitors. We were fortunate to be able to bring on approximately a dozen new exhibitors last year, and hope to do so again in 2011. The group also discussed some different options for Exhibitor Bingo, and explored possible organizations to invite that will address services to veterans.

The Marketing/Promotion Committee continues its work by talking with various businesses who may be interested in funding certain pieces of the Expo...example: printing, entertainment, Pride Room. We are currently awaiting a response from three businesses as to their intent for sponsorship. Donation request letters will be mailed in early to mid July. Billboard space has already been reserved for the month of October through Adams Outdoor Advertising. Save-The-Date flyers were distributed at the Anti-Stigma Alliance film on May 1 at the Virginia Theater.

The Entertainment Committee continues to pursue some top entertainment for this years' event. Our goal, as in past years, is to highlight performers who have a disability, or entertainment groups where persons with disabilities are active participants. It is also important to bring new entertainment to the event each year in order to attract participants.

The Accessibility Committee has received a commitment from our three veteran sign language interpreters to help us out again, and DRES will be formatting all of our materials again this year.

The remaining copies of the 2010 Resource Book are being used in our fundraising efforts. We printed 1,500 of these books, and have distributed most of them at this point.

Respectfully submitted,

Barb Bressner  
Expo Coordinator