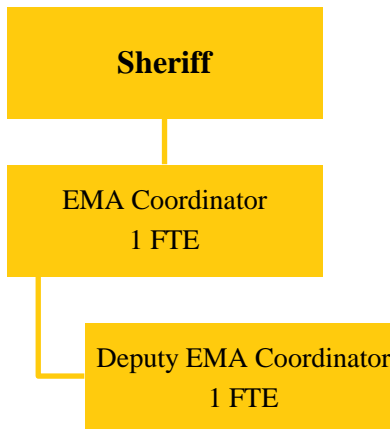


EMERGENCY MANAGEMENT AGENCY

Fund 080-043



Emergency Management Agency positions: 2 FTE

The Emergency Management Agency (EMA) of Champaign County was established pursuant to the Illinois Emergency Management Agency Act (20 ILCS 3305/1) which authorizes emergency management programs within the political subdivisions of the state.

MISSION STATEMENT

It is the mission of the Emergency Management Agency to provide a coordinated effort to ensure effective preparation, response and recovery for any natural or man-made disaster through the effective management of local, state, and federal assets and funding, and through constant assessment of potential hazard and disaster events.

BUDGET HIGHLIGHTS

During FY2022, the EMA will continue to:

- Recruit, expand, train and maintain the Champaign County Search and Rescue team.
- Work with and utilize the local Amateur Radio Operators and county weather spotters.
- Conduct outreach to townships and small towns to prepare for emergencies and encourage entering statewide mutual aid agreements and notification of severe weather potential for local activities.
- Conduct outreach to non-government agencies that service persons with disabilities and special needs for emergency preparedness.
- Input responders into the Salamander System and train personnel on its use for accountability in disasters.
- Inform and train agencies on record keeping requirements for the Federal Emergency Management Agency (FEMA) and the Illinois Emergency Management Agency (IEMA), especially concerning expense reimbursement.
- Promote the Local Emergency Planning Committee (LEPC) membership and activities regarding hazardous materials awareness and response.

FINANCIAL

Fund 080 Dept 043			2020	2021	2021	2022
			Actual	Original	Projected	Budget
331	91	HOM SEC-EMRGNCY MGMT PERF	\$74,558	\$52,000	\$67,118	\$52,000
331	99	DOT-HAZRD MATLS TRNG/PLAN	\$9,919	\$8,500	\$10,000	\$8,500
332	38	CURE PROGRAM	\$46,538	\$0	\$0	\$0
332	39	BJA FY20 COVID EMRGY GRNT	\$9,411	\$0	\$0	\$0
332	41	FEMA PA	\$0	\$0	\$9,036	\$0
		FEDERAL, STATE & LOCAL SHARED REVENUE	\$140,426	\$60,500	\$86,154	\$60,500
369	90	OTHER MISC. REVENUE	\$19,555	\$0	\$0	\$0
		MISCELLANEOUS	\$19,555	\$0	\$0	\$0
		REVENUE TOTALS	\$159,981	\$60,500	\$86,154	\$60,500
511	2	APPOINTED OFFICIAL SALARY	\$71,723	\$73,231	\$73,231	\$75,138
511	3	REG. FULL-TIME EMPLOYEES	\$50,910	\$58,393	\$58,393	\$59,613
511	5	TEMP. SALARIES & WAGES	\$8,250	\$700	\$700	\$700
		PERSONNEL	\$130,883	\$132,324	\$132,324	\$135,451
522	1	STATIONERY & PRINTING	\$39	\$284	\$0	\$284
522	2	OFFICE SUPPLIES	\$820	\$200	\$140	\$200
522	6	POSTAGE, UPS, FED EXPRESS	\$0	\$15	\$0	\$15
522	10	FOOD	\$0	\$300	\$0	\$300
522	15	GASOLINE & OIL	\$1,524	\$1,400	\$1,500	\$1,400
522	19	UNIFORMS	\$0	\$316	\$0	\$316
522	44	EQUIPMENT LESS THAN \$5000	\$9,156	\$100	\$0	\$100
522	93	OPERATIONAL SUPPLIES	\$5,214	\$800	\$0	\$800
		COMMODITIES	\$16,753	\$3,415	\$1,640	\$3,415
533	7	PROFESSIONAL SERVICES	\$0	\$9,000	\$0	\$9,000
533	18	NON-EMPLOYEE TRAINING,SEM	\$0	\$500	\$0	\$500
533	29	COMPUTER/INF TCH SERVICES	\$119	\$84	\$0	\$84
533	33	TELEPHONE SERVICE	\$9,787	\$11,500	\$10,000	\$11,500
533	40	AUTOMOBILE MAINTENANCE	\$999	\$500	\$250	\$2,500
533	42	EQUIPMENT MAINTENANCE	\$829	\$4,500	\$500	\$2,500
533	84	BUSINESS MEALS/EXPENSES	\$138	\$300	\$150	\$300
533	93	DUES AND LICENSES	\$525	\$185	\$185	\$185
533	95	CONFERENCES & TRAINING	\$0	\$1,500	\$250	\$1,500
534	37	FINANCE CHARGES,BANK FEES	\$147	\$0	\$20	\$0
534	40	CABLE/SATELLITE TV EXP	\$358	\$400	\$300	\$400
534	99	REMIT CC FINGERPRNTG FEES	\$243	\$130	\$85	\$208
		SERVICES	\$13,145	\$28,599	\$11,740	\$28,677
		EXPENDITURE TOTALS	\$160,781	\$164,338	\$145,704	\$167,543

ALIGNMENT to STRATEGIC PLAN

County Board Goal 1 – Champaign County is committed to be a high performing, open and transparent local government organization

- To maximize the utilization of our resources of the Regional Emergency Coordination Group (RECG) and its teams to include outside agency participation

County Board Goal 2 – Champaign County maintains high quality public facilities and highways and provides a safe rural transportation system and infrastructure

- Operate a fully functional County Emergency Operations Center with communication and command post capability
- Utilize Emergency Operations Center for training events and for numerous agency's exercises

County Board Goal 3 –Champaign County promotes a safe, just and healthy community

- Prepare for severe weather through implementation of severe weather preparedness training
- Educate the community on Emergency Preparedness through Community Outreach Programs
- Continue to work with local partners on functional needs citizens support programs

DESCRIPTION – EMA SERVICES

EMA is a State Mandated Agency to ensure that the County has a comprehensive Emergency Operation Plan. This plan addresses the way agencies will respond to and recover from major emergencies or disasters. The plan addresses the threats that could affect the residents of the County. Parts of the plan are exercised on an annual basis as well as the preparation of an after-action report that lists the strengths and weakness of the plan and an improvement plan. EMA works closely with the National Weather Service to send prompt warning to the residents during severe weather or other threats.

OBJECTIVES

1. Ensure proactive planning
2. Assess potential hazards
3. Respond to requests for assistance
4. Maintain state EMA accreditation
5. Exercise and evaluate Plans
6. Maintain NIMS compliance
7. Communicates to the public the potential for hazardous weather

PERFORMANCE INDICATORS

Indicator	FY2020 Actual	FY2021 Projected	FY2022 Budgeted
EMA Federal Funding	\$74,558	\$65,000	\$65,000
Exercises performed and evaluated	19	20	20
Number of individuals participating in exercises	100	100	100
Number of agencies participating in exercises	22	22	25
Activations of EOC for Severe Weather	0	1	1
Activations of EOC for other emergencies	3	3	2
Number of Individuals required to maintain NIMS compliance	18	18	18
Number of Individuals documented to be NIMS compliant	18	18	18
Number of Volunteer hours supporting the community	916	900	900