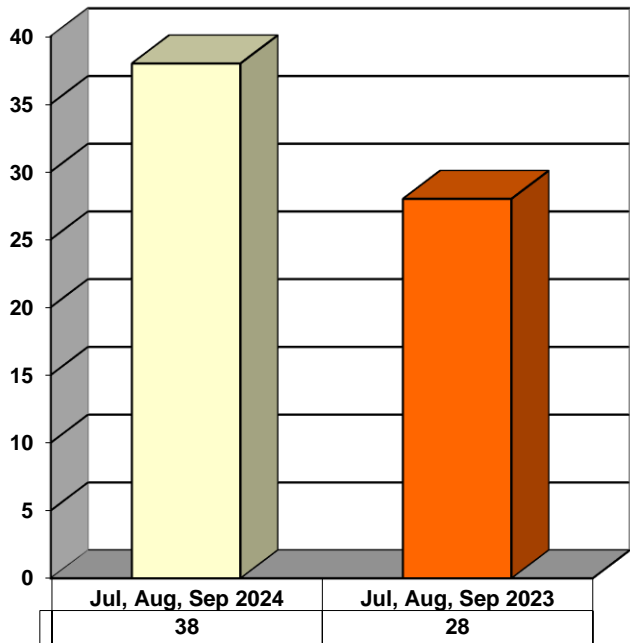
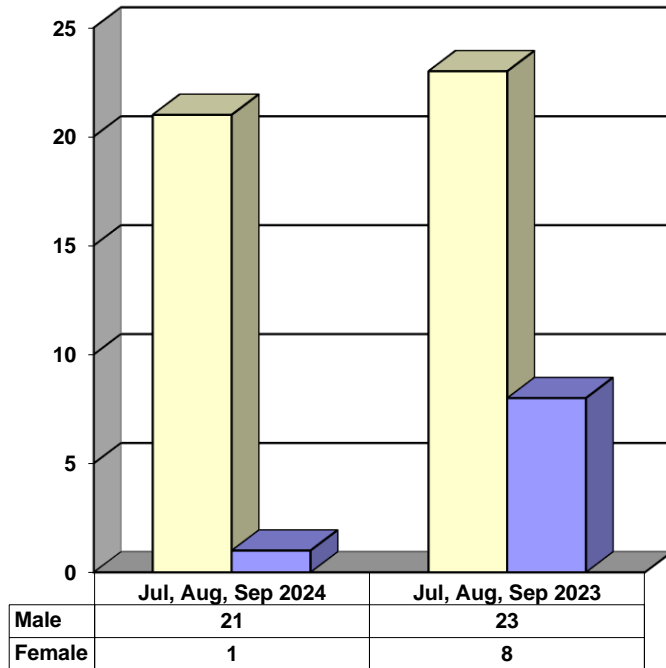


**JUVENILE SUPERVISION INFORMATION
MONTHS OF JULY, AUGUST, AND SEPTEMBER 2024
(Compared to Prior Year)**

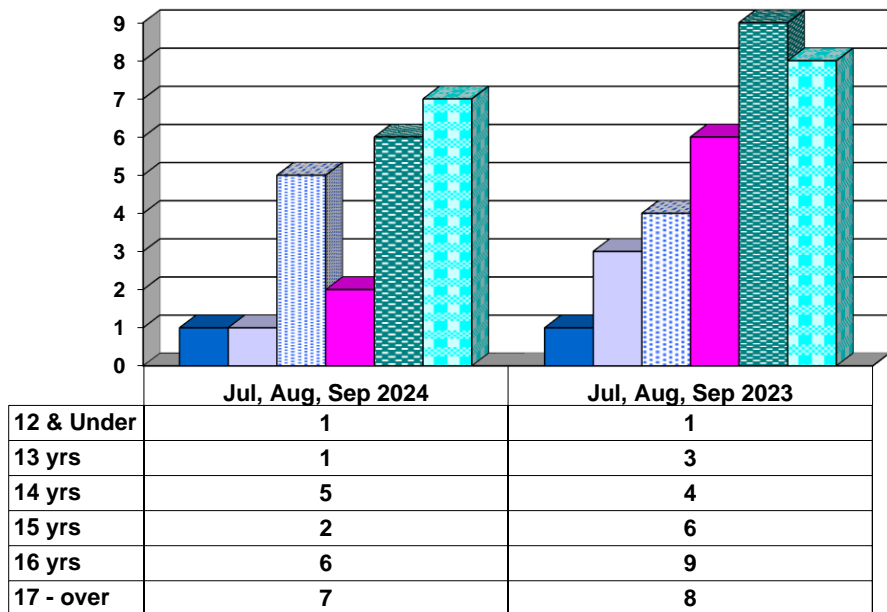
Juvenile Delinquency Petitions Filed



Gender Demographics for Juvenile Admissions

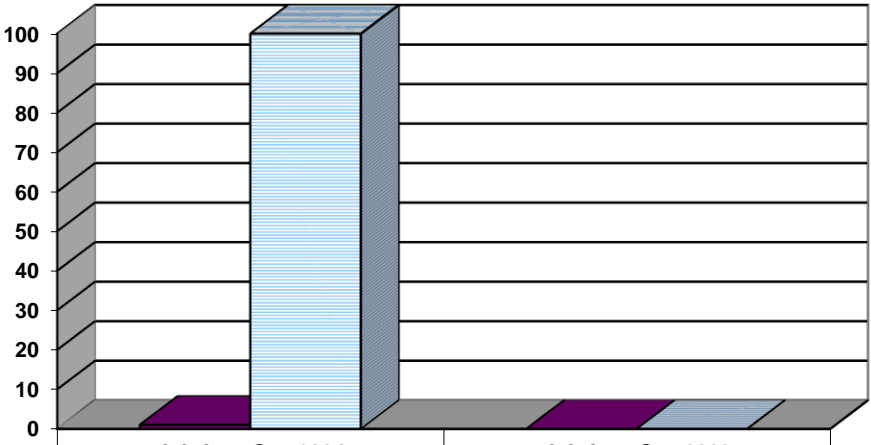


Age Demographics for Juvenile Admissions



12 & Under
 13 yrs
 14 yrs
 15 yrs
 16 yrs
 17 - over

Restitution Ordered in New Juvenile Cases

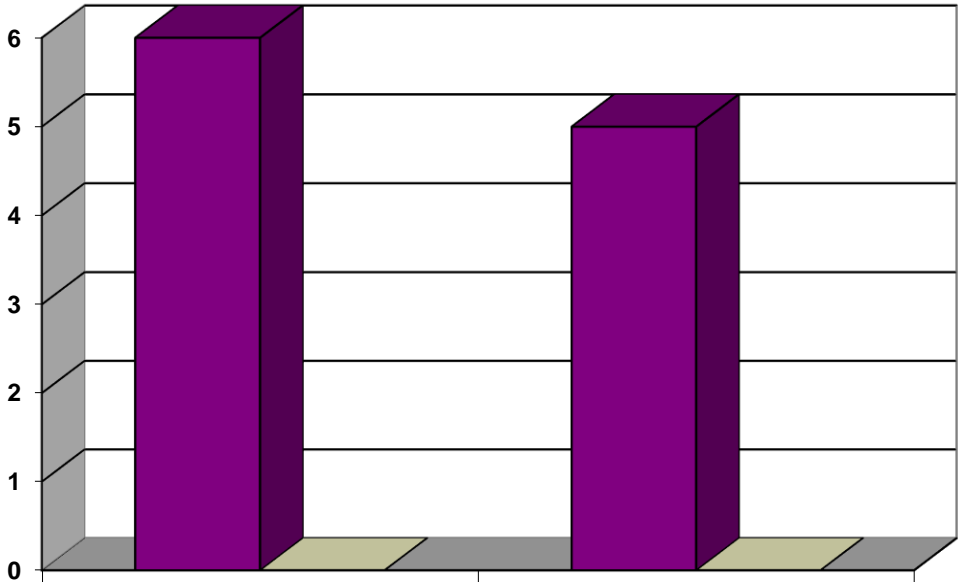


■ New cases ordered to pay

□ Total amount

	Jul, Aug, Sep 2024	Jul, Aug, Sep 2023
New cases ordered to pay	1	0
Total amount	\$100	\$0

Commitments to Illinois Department of Juvenile Justice

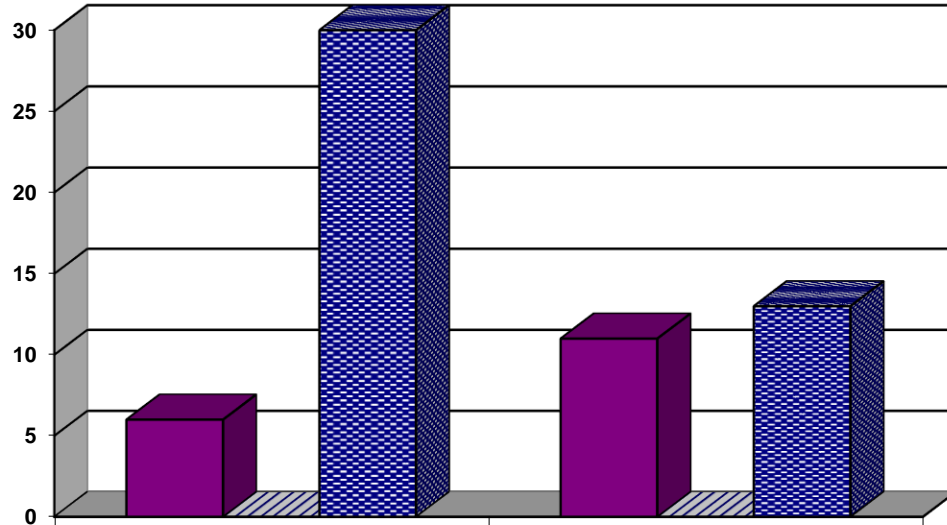


■ Full

□ Evaluation

	Jul, Aug, Sep 2024	Jul, Aug, Sep 2023
Full	6	5
Evaluation	0	0

Investigations Completed by Juvenile Division



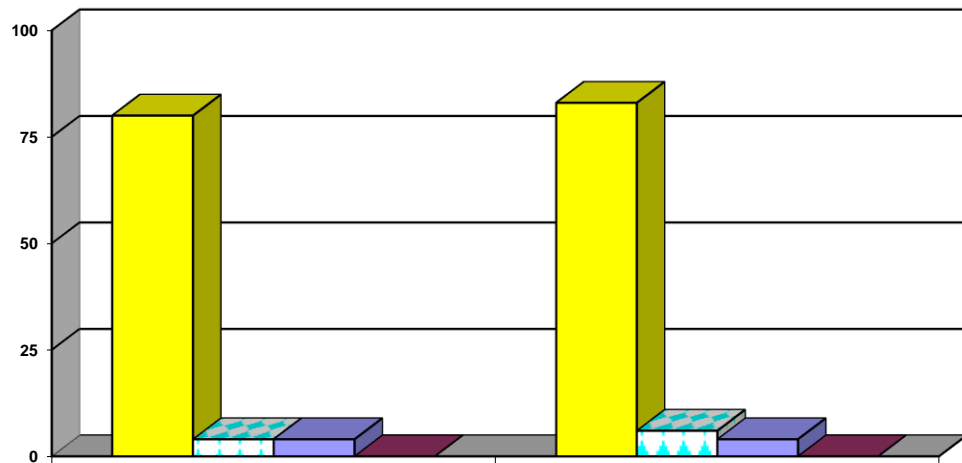
	Jul, Aug, Sep 2024	Jul, Aug, Sep 2023
Social Histories	6	11
Supplemental Social History	0	0
Remission/Review	30	13

■ Social Histories

▨ Supplemental Social History

■ Remission/Review

Juvenile Caseload at End of Reporting Periods



	September 2024	September 2022
Probation	80	83
Continued under Supervision	4	6
Informal	4	4
Other	0	0

■ Probation

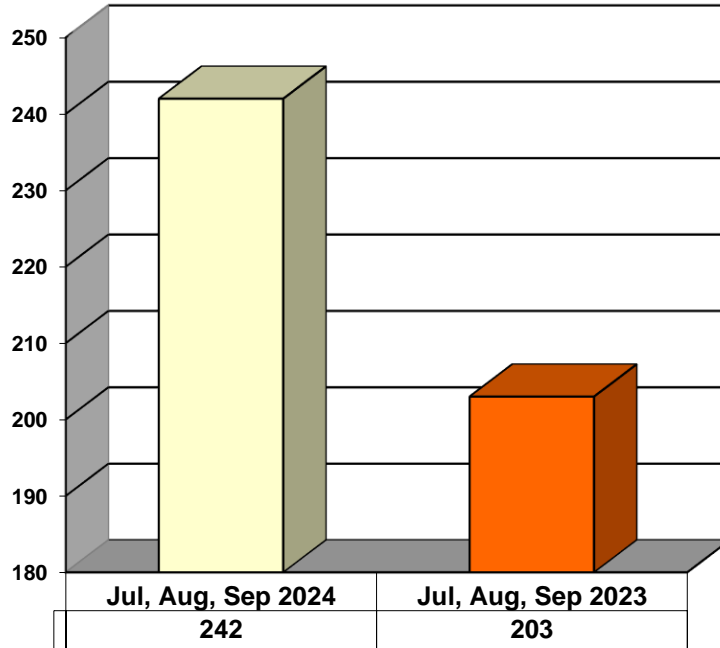
▨ Continued under Supervision

■ Informal

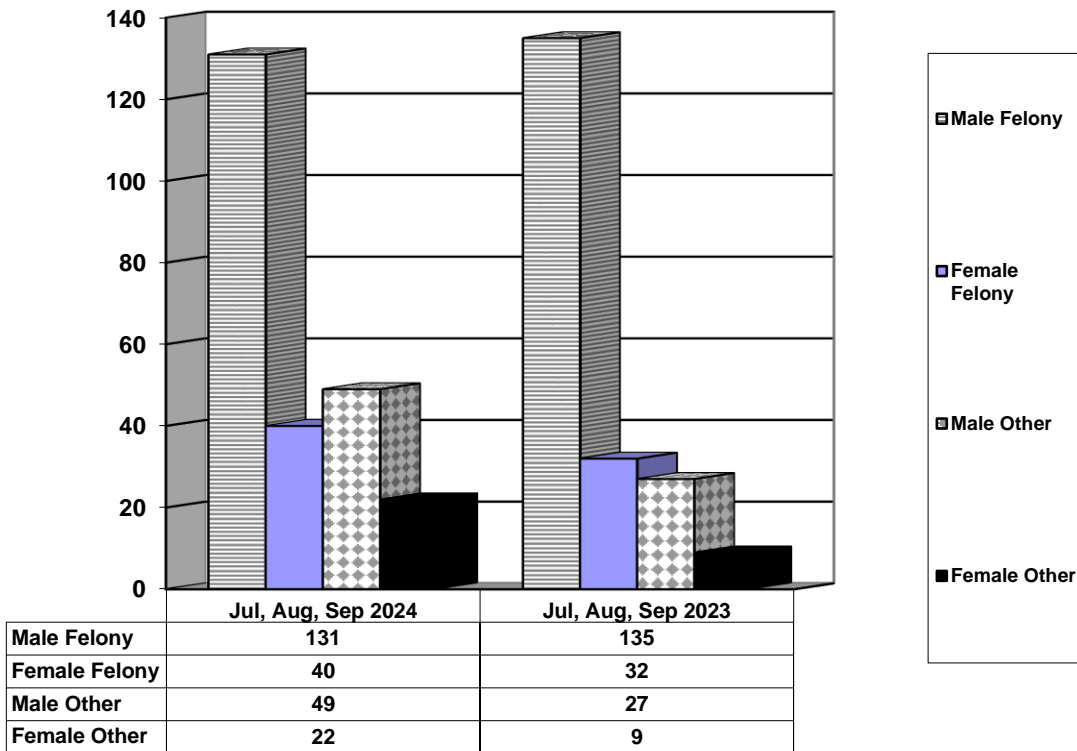
■ Other

**ADULT SUPERVISION INFORMATION
JULY, AUGUST, AND SEPTEMBER 2024
(Compared to Prior Year)**

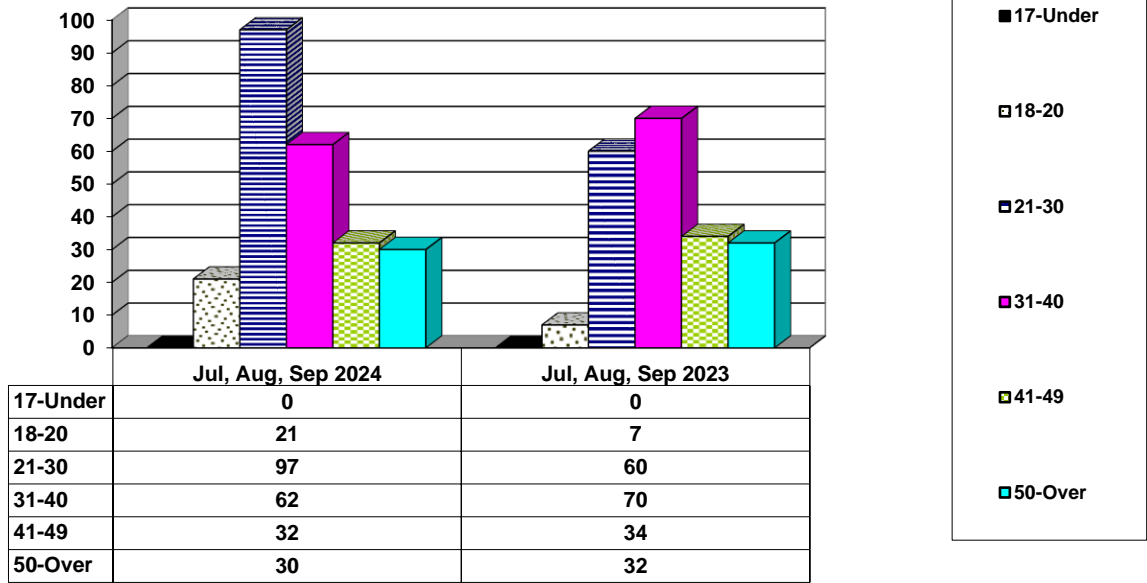
Adult Intakes Completed



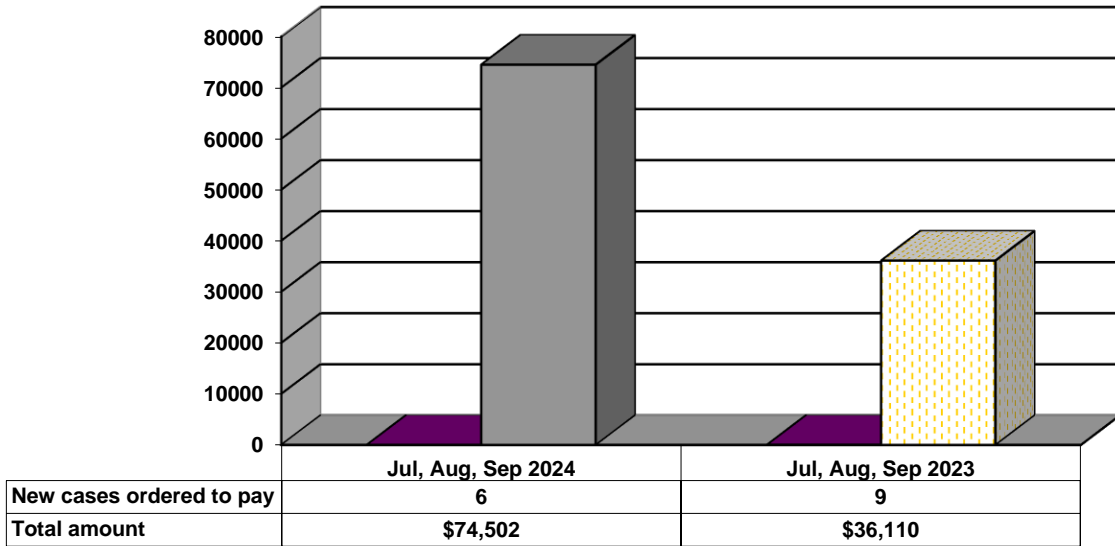
Gender Demographics for Adult Intakes



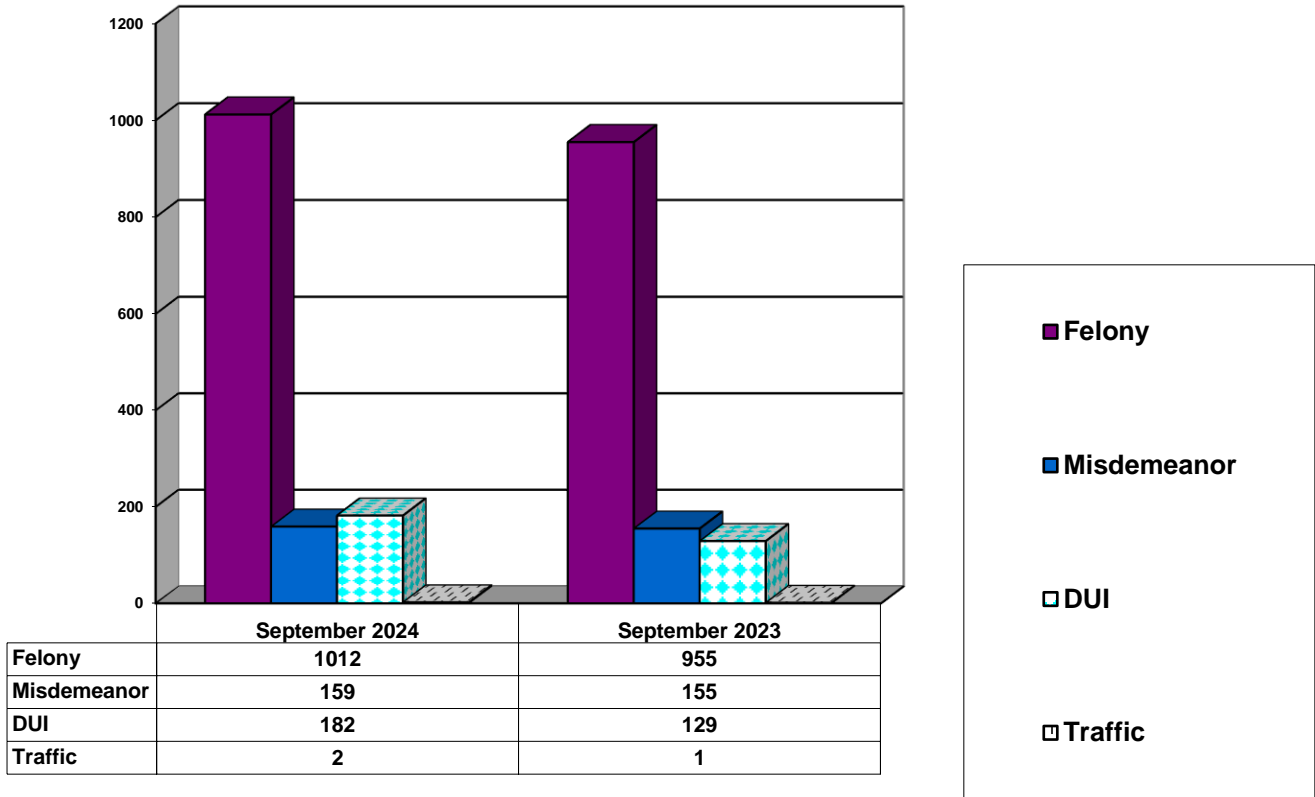
Age Demographics for Adult Intakes



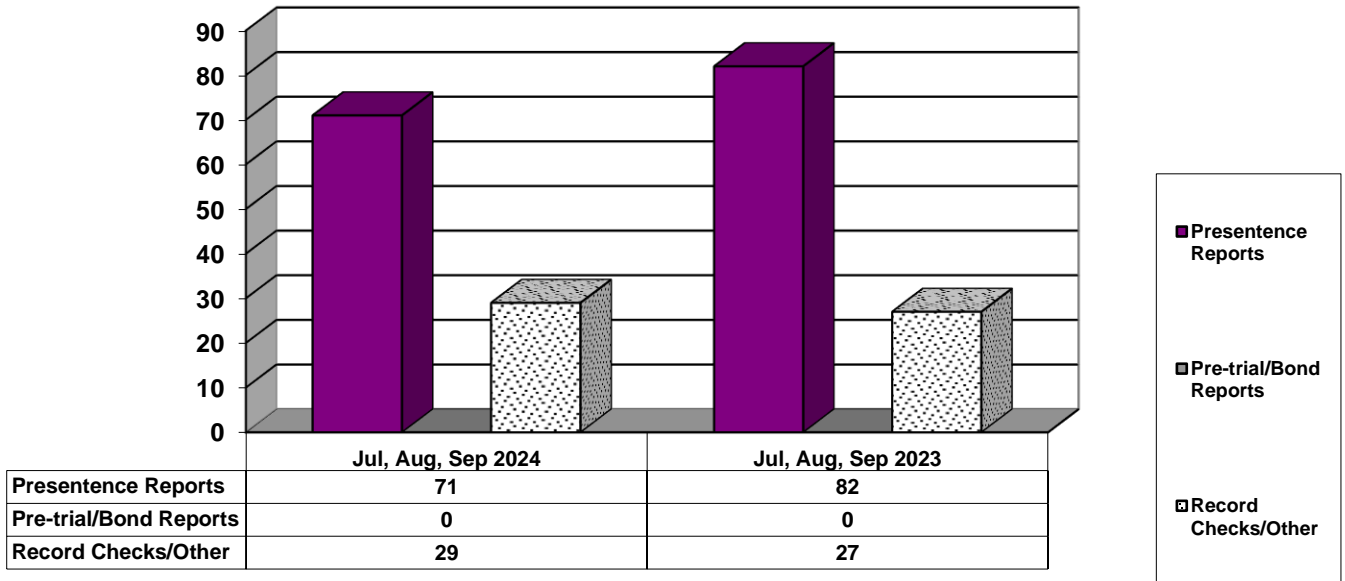
Restitution Ordered in New Adult Cases



Breakdown of Adult Caseload at End of Reporting Periods



Adult Investigations Completed



Commitments to Illinois Department of Corrections

