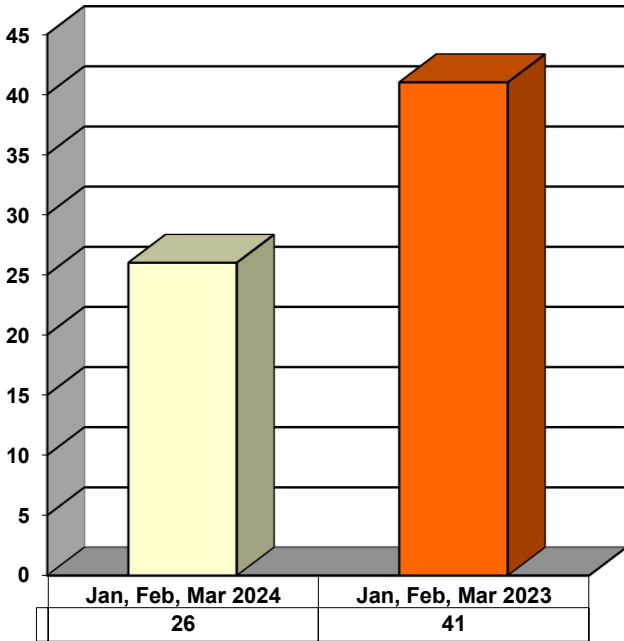
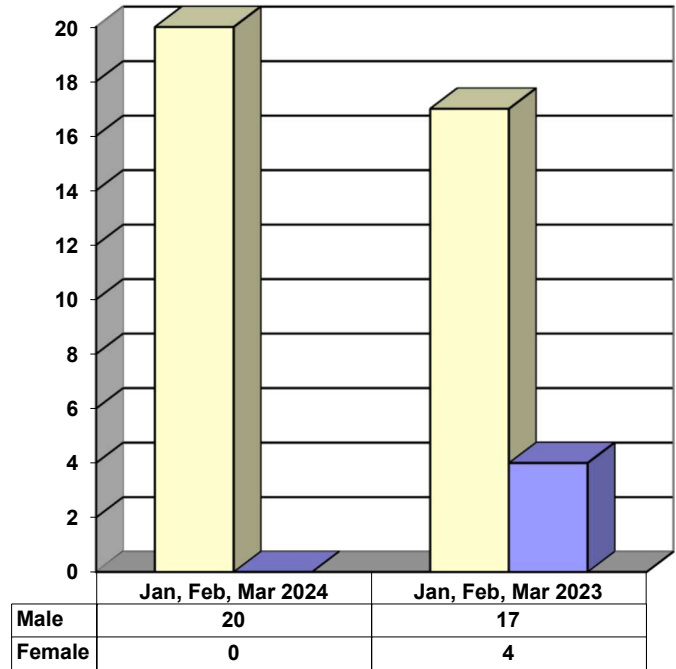


**JUVENILE SUPERVISION INFORMATION  
MONTHS OF JANUARY, FEBRUARY, AND MARCH 2024  
(Compared to Prior Year)**

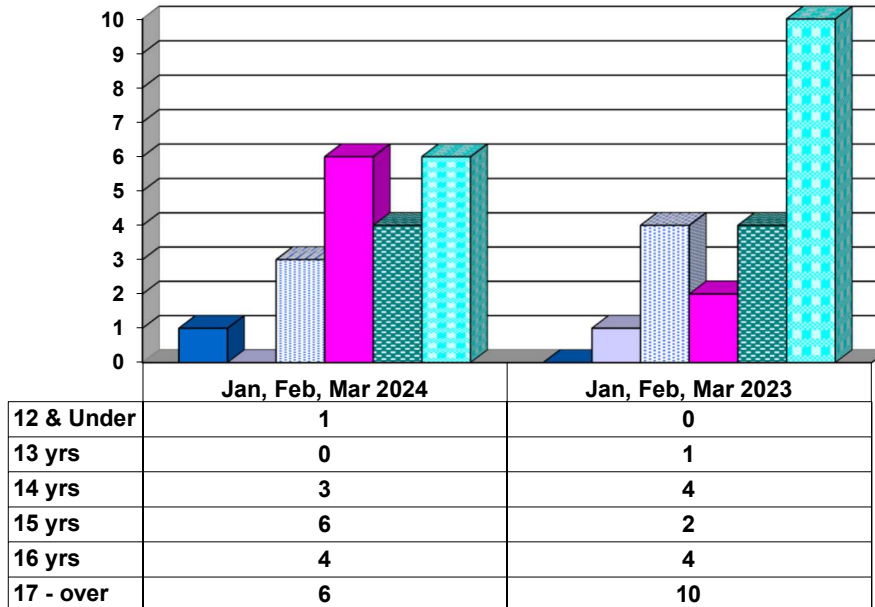
**Juvenile Delinquency Petitions Filed**



**Gender Demographics for Juvenile Admissions**

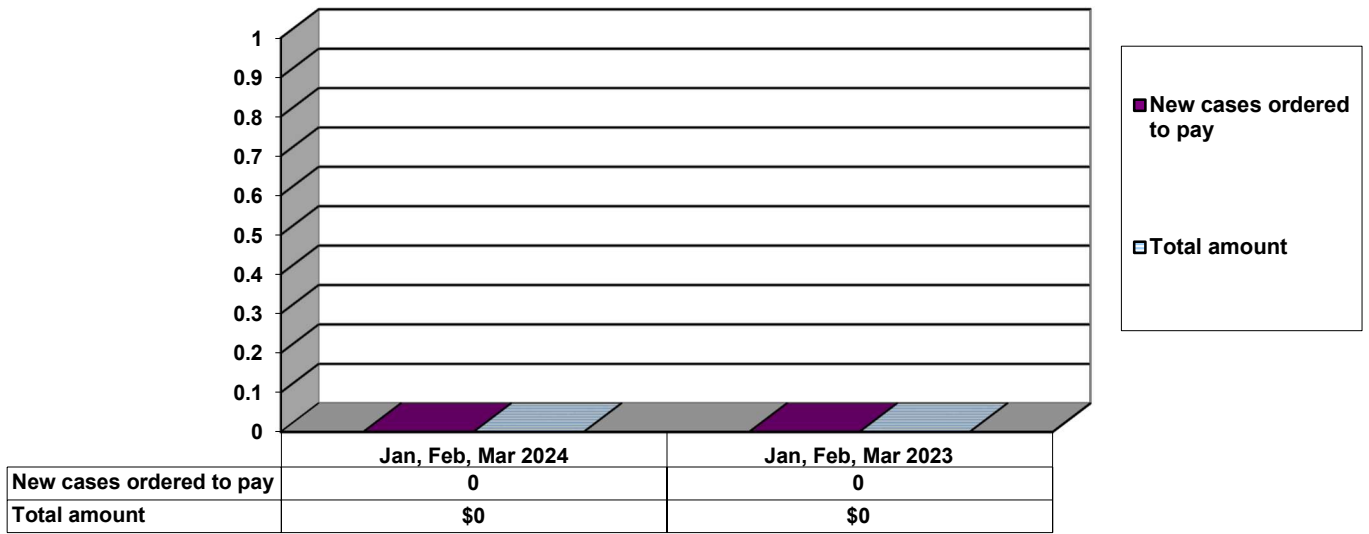


**Age Demographics for Juvenile Admissions**

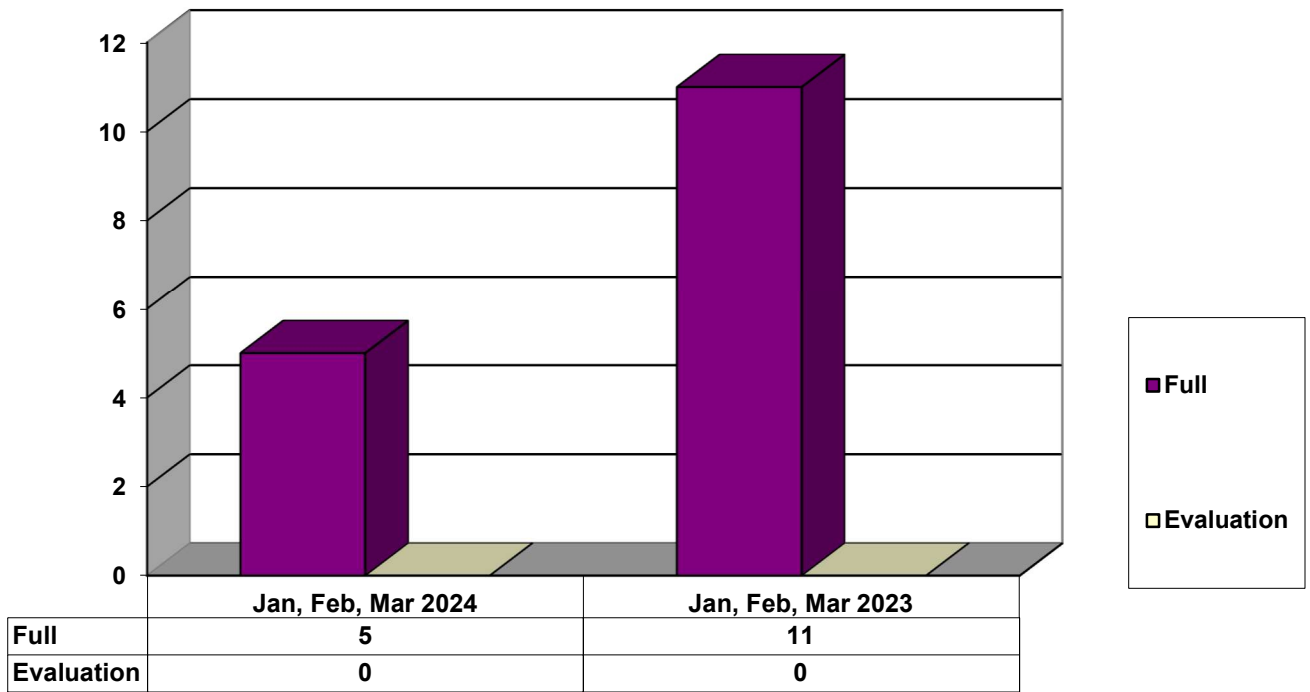


■ 12 & Under    
 ■ 13 yrs    
 ■ 14 yrs    
 ■ 15 yrs    
 ■ 16 yrs    
 ■ 17 - over

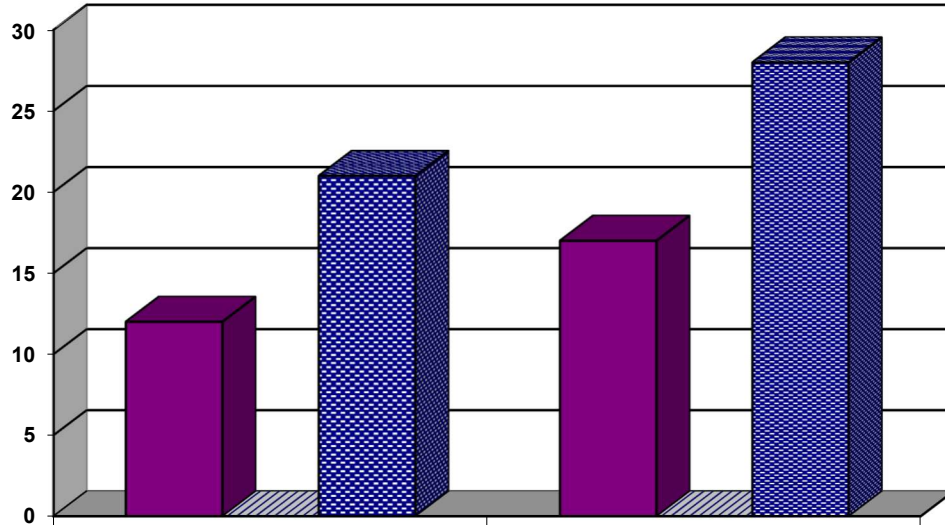
### Restitution Ordered in New Juvenile Cases



### Commitments to Illinois Department of Juvenile Justice



### Investigations Completed by Juvenile Division



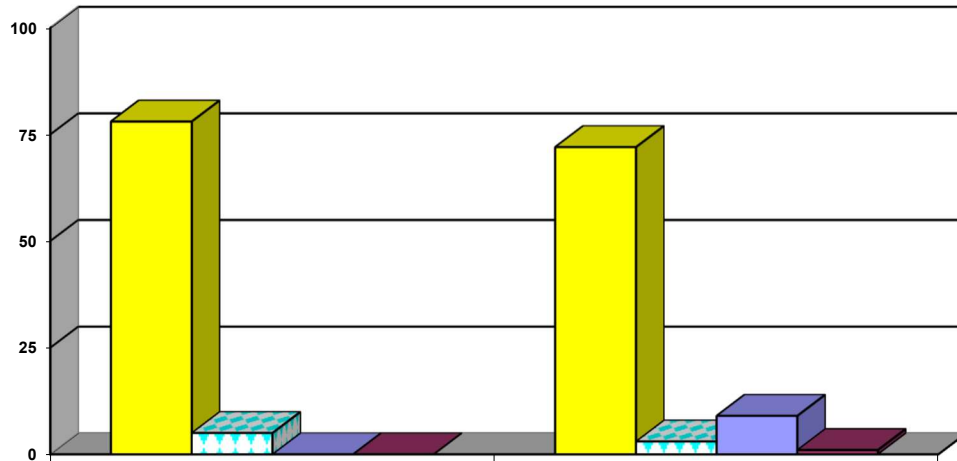
	Jan, Feb, Mar 2024	Jan, Feb, Mar 2023
Social Histories	12	17
Supplemental Social History	0	0
Remission/Review	21	28

■ Social Histories

▨ Supplemental Social History

■ Remission/Review

### Juvenile Caseload at End of Reporting Periods



	March 2024	March 2023
Probation	78	72
Continued under Supervision	5	3
Informal	0	9
Other	0	1

■ Probation

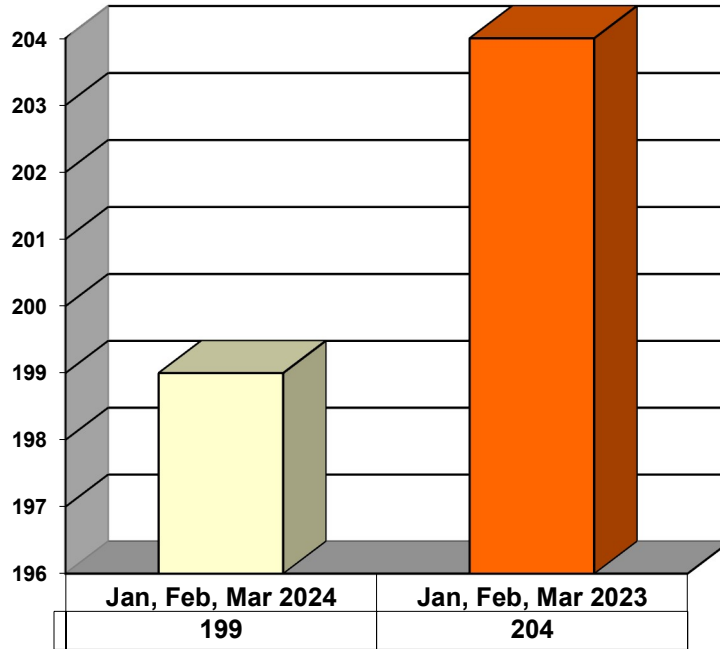
▨ Continued under Supervision

■ Informal

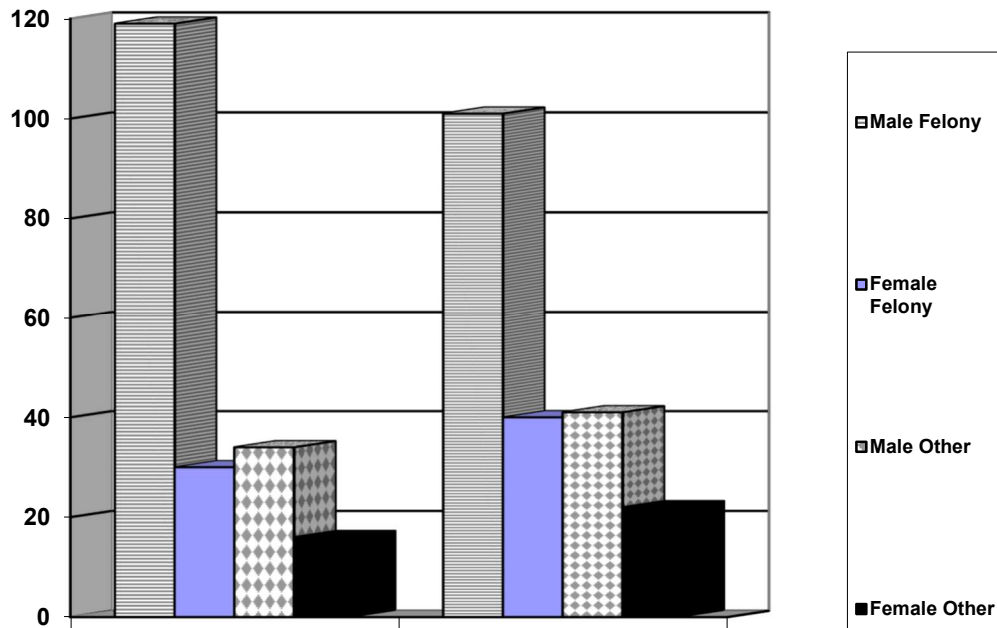
■ Other

**ADULT SUPERVISION INFORMATION  
MONTHS OF JANUARY, FEBRUARY, AND MARCH 2024  
(Compared to Prior Year)**

**Adult Intakes Completed**

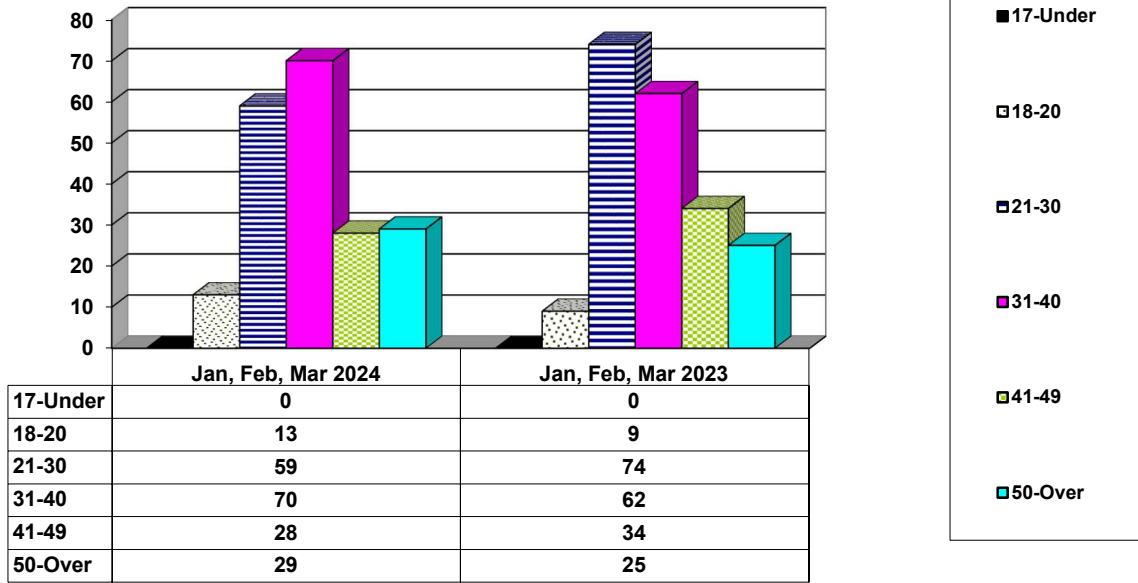


**Gender Demographics for Adult Intakes**

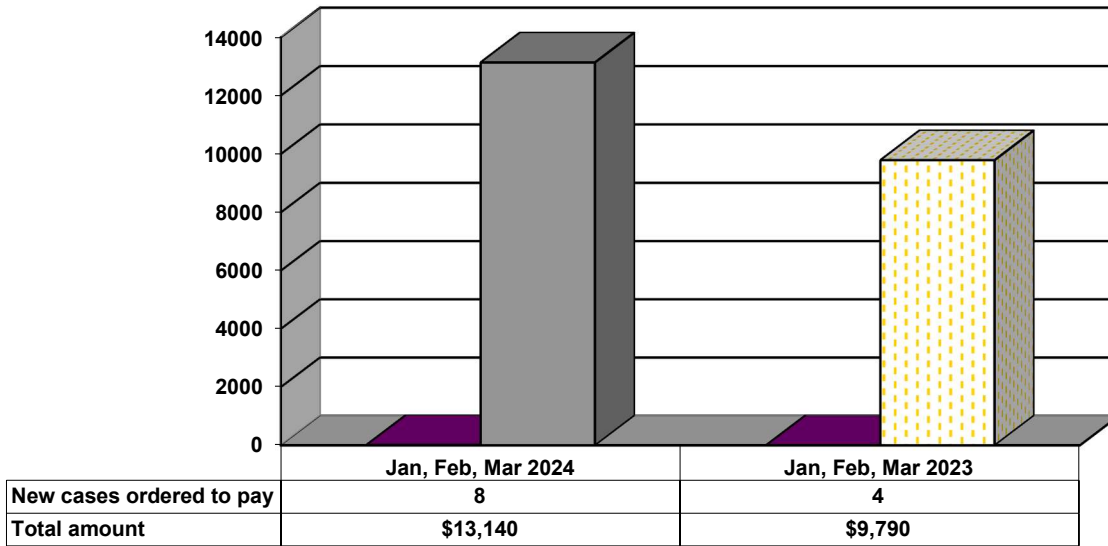


	Jan, Feb, Mar 2024	Jan, Feb, Mar 2023
Male Felony	119	101
Female Felony	30	40
Male Other	34	41
Female Other	16	22

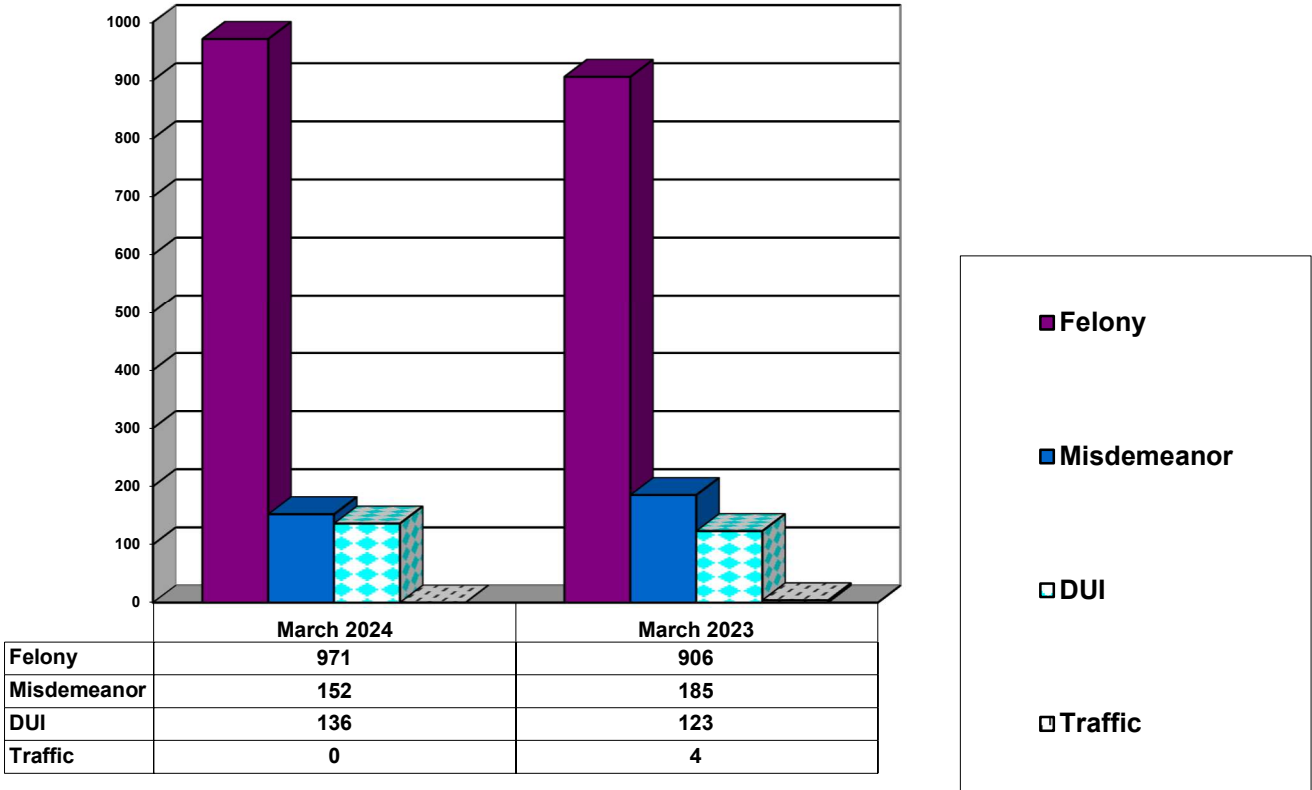
### Age Demographics for Adult Intakes



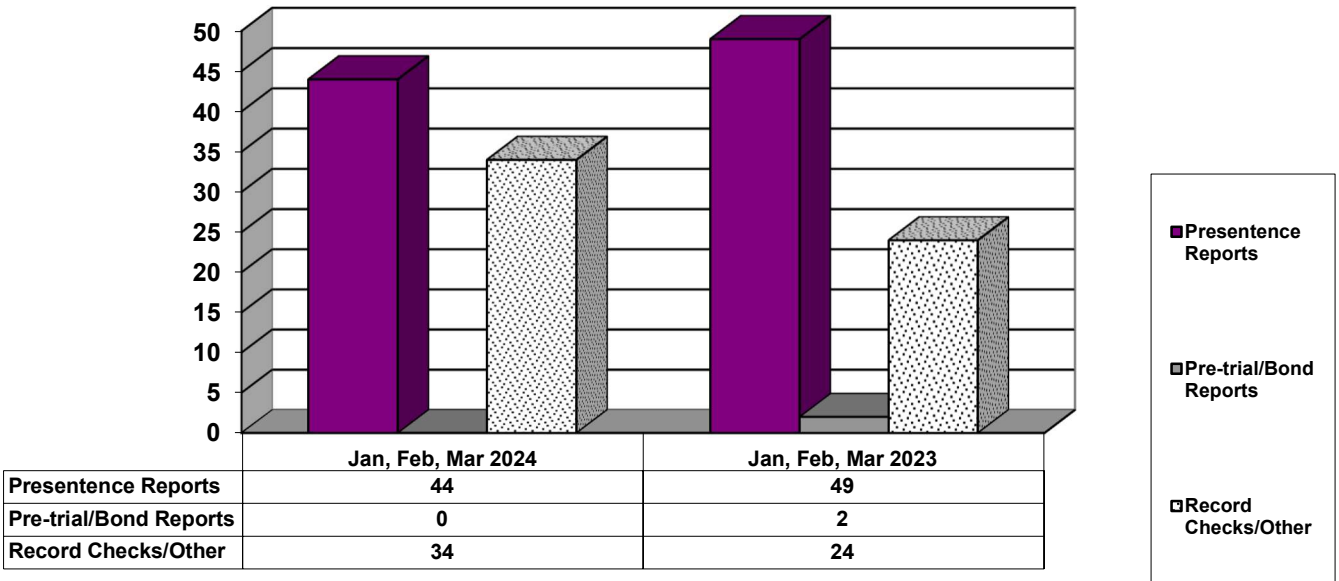
### Restitution Ordered in New Adult Cases



### Breakdown of Adult Caseload at End of Reporting Periods



### Adult Investigations Completed



### Commitments to Illinois Department of Corrections

