



**CHAMPAIGN COUNTY  
DEVELOPMENTAL  
DISABILITIES BOARD**  

---

**CHAMPAIGN COUNTY  
MENTAL HEALTH BOARD**

## Champaign County Mental Health Board

---

In fulfillment of our responsibilities under the Community Mental Health Act, the Champaign County Mental Health Board (CCMHB) presents the following documents for public review:

The CCMHB's Annual Report provides an accounting to the citizens of Champaign County of the CCMHB's activities and expenditures during the period of January 1, 2022 through December 31, 2022.

The CCMHB's Three-Year Plan for the period January 1, 2022 through December 31, 2024 presents the CCMHB's goals for development of Champaign County's system of community mental health, intellectual and developmental disabilities, and substance use disorder services and facilities, with One-Year Objectives for January 1, 2023 through December 31, 2023.

Any questions or comments regarding the CCMHB's activities or the county's behavioral health and developmental disability services can be directed to the Champaign County Mental Health Board; 1776 E. Washington; Urbana, IL 61802; phone (217) 367-5703, fax (217) 367-5741.

---

**Champaign County Mental Health Board**

**Fiscal Year 2022 Annual Report & Three-Year Plan 2022-2024**

**Table of Contents**

|   |       |
|---|-------|
| Board and Staff Listing                       | 1     |
| President's Report                            | 2     |
| Section I: Financial Reports and Service Data | 3     |
| Financial Report                              | 4     |
| CILA/IDD Special Initiatives Financial Report | 5     |
| Program Allocations                           | 6-7   |
| Service Categories                            | 8     |
| Utilization Summaries                         | 9-22  |
| Funding Distribution Charts                   | 23    |
| Service Demographics Charts                   | 24    |
| Section II: Three-Year Plan 2022-2024         | 25-37 |
| Three-Year Plan with FY23 Objectives          |       |

# **LISTING OF 2022 BOARD MEMBERS AND STAFF**

## **BOARD MEMBERS**

Mr. Joseph Omo-Osagie, President to July 1/Vice President July 1- December 31

Dr. Jon Paul Youakim, Vice President to July 1/President July 1- December 31

Mr. Matthew A. Hausman

Dr. Daphne Maurer

Ms. Elaine Palencia

Mr. Kyle Patterson

Ms. Jane Sprandel

Ms. Alexa McCoy

Ms. Molly McLay

## **STAFF MEMBERS**

Lynn Canfield  
Executive Director

Kim Bowdry  
Associate Director for Intellectual and Developmental Disabilities

Leon Bryson  
Associate Director for Mental Health & Substance Use Disorder Services

Stephanie Howard-Gallo  
Operations & Compliance Coordinator

Shandra Summerville  
Cultural & Linguistic Competence Coordinator

Chris Wilson  
Financial Manager

## CCMHB President's Report

As President of the Champaign County Mental Health Board (CCMHB), it is my pleasure to present our 2022 Annual Report. Per the Illinois Community Mental Health Act (405 ILCS 20/), this fulfills the annual financial reporting requirement, with accounting of the year's revenues and expenditures, amounts paid to agencies by program, and costs of the CILA project (now I/DD Special Initiatives), a collaboration with the Champaign County Board for Care of Persons with a Developmental Disability (CCDDB). Descriptions of funded programs and utilization data are also offered, with charts showing how financial resources were committed per sector, population, and service type. Closing out the report is the Three-Year Plan with Fiscal Year 2023 Objectives.

- From January through June, the second half of Program Year 2022 agency allocations were paid out. Amounts awarded (for the full 12 months) totaled \$4,774,186, plus County ARPA funds of \$770,436. ARPA funds provided an infusion of resources to address local needs resulting from or exacerbated by the pandemic.
- From July through December, the first half of Program Year 2023 allocations were paid out. The total of awards allocated for July 1, 2022 to June 30, 2023 was \$3,252,070.
- In July, "988" went into effect, establishing a national mental health crisis line and network of call centers. This had immediate impact on counties such as ours, where local funds and agency innovations had supported this component of crisis response. As this system evolves, impacted by new laws and community need, it remains important to the CCMHB.
- The CCMHB and CCDDB reviewed and approved a Request for Proposals for Evaluation Capacity Building and received an excellent proposal from the University of Illinois Family Resiliency Center, project to begin in May 2023.
- In July, the Board approved a second phase of financial management and accounting support for small or new agencies, through an independent consultant contract.
- Notably, our annual events were once again in person. We sponsored an anti-stigma film and related activities during Roger Ebert's Film Festival. Our very own Joseph Omo-Osagie participated in the post-screening discussion. The festival art show was well-attended, promoting artists and entrepreneurs who have disabilities or lived experience. The disABILITY Resource Expo also returned, at Market Place Mall, with over 1,100 attendees.

The changes around us - social, economic, political, and otherwise - require that we support agencies and community members through turbulent times and new challenges. We will continue to amplify community voices and support agencies' efforts to provide high quality care for our neighbors with behavioral health needs and intellectual and developmental disabilities.

With deep gratitude, we bid Kyle Patterson farewell as our County Board Representative from 2017-2022. Chair Patterson brought a strong commitment to the mission and was integral to advances we have made, particularly in consumer services and alignment of goals of the Boards. Board service is one of the most difficult volunteer roles, and he performed with great dedication.

Thank you for your interest in the CCMHB's work. What has been accomplished would not be possible without the commitment of fellow volunteer board members and dedicated staff.

Respectfully,

Jon Paul Youakim  
CCMHB President, July 1, 2022 to Present

## SECTION I: Financial Reports and Service Data

**CHAMPAIGN COUNTY MENTAL HEALTH BOARD**

**ANNUAL FINANCIAL REPORT**

**1/1/22 - 12/31/22**

|   | 2021             | 2022             |
|---|------------------|------------------|
| <b>Beginning of the Year Fund Balance</b>             | \$ -             | \$ 488,978       |
| <br><b>REVENUE</b>                                    |                  |                  |
| <b>General Property Taxes</b>                         | \$ 5,278,325     | \$ 5,492,390     |
| <b>Property Taxes - Back Tax</b>                      | -                | 8,824            |
| <b>Payment in Lieu of Taxes</b>                       | 3,679            | 1,474            |
| <b>Mobile Home Tax</b>                                |                  | 3,700            |
| <b>Local Government Revenue</b>                       |                  | -                |
| <b>Champ County Developmental Disabilities Board</b>  | 366,344          | 358,450          |
| <b>Interest Earnings</b>                              | 1,343            | 47,855           |
| <b>Gifts and Donations</b>                            | 100              | -                |
| <b>Disability Expo***</b>                             | 100              | -                |
| <b>Miscellaneous</b>                                  | 2,205            | 55,161           |
| <b>American Rescue Plan Act**</b>                     | 770,436          | -                |
| <b>TOTAL REVENUE</b>                                  | \$ 6,422,532     | \$ 5,967,854     |
| <br><b>EXPENDITURES</b>                               |                  |                  |
| <b>Administration &amp; Operating Expenses:</b>       |                  |                  |
| <b>Personnel</b>                                      | \$ 564,542       | \$ 564,444       |
| <b>Commodities</b>                                    | 8,632            | 10,930           |
| <b>Services</b>                                       | 295,970          | 283,065          |
| <b>Interfund Transfers*</b>                           | 972              | 6,908            |
| <b>Capital Outlay</b>                                 | -                | -                |
| <b>Sub-Total</b>                                      | \$ 870,116       | \$ 865,346       |
| <br><b>Grants and Contributions:</b>                  |                  |                  |
| <b>Program</b>  | 5,063,438        | 5,288,028        |
| <b>Capital</b>  | -                | -                |
| <b>Sub-Total</b>                                      | \$ 5,063,438     | \$ 5,288,028     |
| <br><b>TOTAL EXPENDITURES</b>                         | <br>\$ 5,933,554 | <br>\$ 6,153,375 |
| <br><b>Fund Balance at the End of the Fiscal Year</b> | <br>\$ 488,978   | <br>\$ 303,458   |

\*\*\* Starting in 2022, Disability Expo Revenue was combined with Misc Revenue

\*\* In 2021, ARPA Funds were received in full, but only half was expended. The other half was to be disbursed in 2022.

\*to CILA fund and to CCDDDB fund for share of revenue from Expo donations and miscellaneous

As of April 6, 2023, FY2022 financial statements are unaudited.

**CILA FACILITIES, *now* I/DD SPECIAL INITIATIVES FUND**

**ANNUAL FINANCIAL REPORT**

**1/1/22 - 12/31/22**

| <b>REVENUE</b>                               | <b>2021</b>          | <b>2022</b>          |
|--|----------------------|----------------------|
| <b>From Mental Health Board</b>              | \$ -                 | \$ -                 |
| <b>From Developmental Disabilities Board</b> | \$ 50,000.00         | \$ 50,000.00         |
| <b>Rent</b>                                  | \$ 2,926.56          | \$ -                 |
| <b>Other Misc Revenue</b>                    | \$ 179.93            | \$ 10,442.76         |
| <b>Sale of Fixed Asset</b>                   | \$ 226,017.05        | \$ 262,044.31        |
| <b>TOTAL REVENUE</b>                         | <u>\$ 279,123.54</u> | <u>\$ 322,487.07</u> |

**EXPENDITURES**

|   |                     |                     |
|---|---------------------|---------------------|
| <b>Mortgage Principal</b>               | \$ -                | \$ -                |
| <b>Mortgage Interest</b>                | \$ -                | \$ -                |
| <b>Commodities</b>                      | \$ 6,283.30         | \$ -                |
| <b>Professional Fees</b>                | \$ 3,372.66         | \$ 1,618.45         |
| <b>Utilities</b>                        | \$ 2,590.06         | \$ 1,604.39         |
| <b>Building/Landscaping Maintenance</b> | \$ 19,398.67        | \$ 14,059.79        |
| <b>Building Improvements</b>            | \$ 14,432.00        | \$ -                |
| <b>Other Services</b>                   | \$ 1,904.50         | \$ 161.00           |
| <b>TOTAL EXPENDITURES</b>               | <u>\$ 47,981.19</u> | <u>\$ 17,443.63</u> |

*As of April 6, 2023, FY2022 financial statements are unaudited.*

**CHAMPAIGN COUNTY MENTAL HEALTH BOARD  
PROGRAM ALLOCATIONS -- FY2022  
1/1/22 - 12/31/22**

| AGENCY/PROGRAM   | TOTAL PAID |
|--|------------|
| <b>CU at Home</b>  |            |
| Shelter Case Management (6 months)                                 | 128,346.00 |
| <b>CHAMPAIGN COUNTY CHILDREN'S ADVOCACY CENTER</b>                 |            |
| Children's Advocacy Center   | 56,425.00  |
| <b>CHAMPAIGN COUNTY CHRISTIAN HEALTH CENTER</b>                    |            |
| Mental Health Care   | 33,000.00  |
| <b>CHAMPAIGN COUNTY HEALTH CARE CONSUMERS</b>                      |            |
| CHW Outreach and Benefit Enrollment                                | 80,276.00  |
| Disability Services  | 71,500.00  |
| Justice Involved CHW Services & Benefits                           | 77,394.00  |
| <b>Agency Total</b>  | 229,170.00 |
| <b>CHAMPAIGN COUNTY REGIONAL PLANNING COMMISSION</b>               |            |
| Headstart - Early Childhood Mental Health Services (w DD amount**) | 336,803.00 |
| Homeless Services System Coordination                              | 53,094.00  |
| Justice Diversion Program (6 months)                               | 103,974.00 |
| Youth Assessment Center  | 76,350.00  |
| <b>Agency Total</b>  | 570,221.00 |
| <b>COMMUNITY SERVICE CENTER OF NORTHER CHAMPAIGN COUNTY</b>        |            |
| Resource Connection  | 68,605.00  |
| <b>COURAGE CONNECTION</b>  |            |
| Courage Connection   | 127,000.00 |
| <b>CRISIS NURSERY</b>  |            |
| Beyond Blue Champaign County                                       | 90,000.00  |
| <b>CUNNINGHAM CHILDREN'S HOME</b>                                  |            |
| ECHO Housing and Employment Support                                | 114,426.00 |
| Families Stronger Together   | 400,599.00 |
| <b>Agency Total</b>  | 515,025.00 |
| <b>DEVELOPMENTAL SERVICES CENTER</b>                               |            |
| Family Development **  | 596,522.00 |
| <b>DON MOYER BOYS &amp; GIRLS CLUB</b>                             |            |
| CUNC   | 110,000.00 |
| Community Coalition Summer Youth Programs                          | 107,000.00 |
| CU Change  | 100,000.00 |
| Youth and Family Services  | 160,000.00 |
| <b>Agency Total</b>  | 477,000.00 |
| <b>EAST CENTRAL ILLINOIS REFUGEE ASSISTANCE CENTER</b>             |            |
| Family Support and Strengthening                                   | 61,998.00  |
| <b>FAMILY SERVICE</b>  |            |
| Counseling   | 30,000.00  |
| Creative Social Connectivity for Seniors (6 months)                | 12,498.00  |
| Self Help Center   | 28,676.00  |
| Senior Counseling and Advocacy                                     | 162,350.00 |
| <b>Agency Total</b>  | 233,524.00 |
| <b>FIRST FOLLOWERS</b>   |            |



**CHAMPAIGN COUNTY MENTAL HEALTH BOARD  
PROGRAM ALLOCATIONS -- FY2022  
1/1/22 - 12/31/22**

| AGENCY/PROGRAM                                       | TOTAL PAID          |
|--|---------------------|
| FirstSteps Community Re-Entry House                  | 39,500.00           |
| Peer Mentoring for Re-entry                          | 95,000.00           |
| <b>Agency Total</b>                                  | <b>134,500.00</b>   |
| <b>GROW IN ILLINOIS</b>                              |                     |
| Peer Support   | 103,411.00          |
| <b>MAHOMET AREA YOUTH CLUB</b>                       |                     |
| BLAST  | 15,000.00           |
| Members Matter!                                      | 21,903.00           |
| <b>Agency Total</b>                                  | <b>36,903.00</b>    |
| <b>PROMISE HEALTHCARE</b>                            |                     |
| Mental Health Services with Promise                  | 350,117.00          |
| Promise Healthcare Wellness                          | 107,987.00          |
| <b>Agency Total</b>                                  | <b>458,104.00</b>   |
| <b>RAPE ADVOCACY COUNSELING EDUCATION SERVICES</b>   |                     |
| Sexual Violence Prevention Education                 | 63,000.00           |
| <b>ROSECRANCE CENTRAL ILLINOIS</b>                   |                     |
| Benefits Case Management (6 months)                  | 40,296.00           |
| Child & Family Services (3 months)                   | 19,893.00           |
| Criminal Justice PSC                                 | 312,174.00          |
| Crisis, Access, & Benefits (6 months)                | 101,984.00          |
| Crisis Co-Response Team (6 months)                   | 103,974.00          |
| Fresh Start (6 months)                               | 42,703.00           |
| Prevention Services (6 months)                       | 30,000.00           |
| Recovery Home  | 164,124.00          |
| Specialty Courts                                     | 169,464.00          |
| <b>Agency Total</b>                                  | <b>984,612.00</b>   |
| <b>TERRAPIN STATION SOBER LIVING</b>                 |                     |
| Recovery Home  | 54,002.00           |
| <b>UP CENTER OF CHAMPAIGN COUNTY (UNITING PRIDE)</b> |                     |
| Children, Youth, and Families Program                | 86,607.00           |
| <b>URBANA NEIGHBORHOOD CONNECTIONS</b>               |                     |
| Community Study Center                               | 34,000.00           |
| <b>WELL EXPERIENCE</b>                               |                     |
| Family Services/Well Family Care Program             | 90,002.00           |
| <b>WIN RECOVERY</b>                                  |                     |
| Re-Entry & Recovery Home                             | 81,386.00           |
| <b>GRAND TOTAL</b>                                   | <b>5,313,363.00</b> |

\*\* Programs for people with ID/DD, per Intergovernmental Agreement with the Champaign County Developmental Disabilities Board  
As of April 6, 2023, FY2022 financial statements are unaudited.

## **Service Totals – Brief Narrative of What the Service Categories Represent**

The Champaign County Mental Health Board funds a wide range of services through local human service providers of varying size and sophistication. The CCMHB invests in services that range from helping mothers and families with newborn babies into early childhood to supporting youth through adolescence and young adulthood to assisting adults and families dealing with life's challenges to helping the elderly with activities of daily living. The not for profit and government agencies that provide services with CCMHB funds range from small agencies with only a few employees and volunteers to large multi-million dollar agencies with over a hundred employees. Descriptions of the service activities supported in current and previous years are available at <http://www.co.champaign.il.us/MHBDDDB/PublicDocuments.php> and <http://ccmhddbrds.org>.

Regardless of their size, agencies are required to report on services delivered using four categories. Those categories must be broad enough to provide a certain amount of flexibility to account for how and to whom the programs delivered services. The four categories are Community Service Event (CSE), Service Contact (SC), Non-Treatment Plan Client (NTPC), and Treatment Plan Client (TPC). Each agency identifies, within each broadly defined category, what will be reported. Definitions of CSEs and SCs relate to types of activities. Definitions of TPCs and NTPCs relate to who has been served and require a certain level of documentation associated with the service. Some programs may only report under one of the categories, others may report on all four. Which and how many categories an agency reports activity under depends on the services provided by the program.

Community Service Events (CSEs) can be public events, work associated with a news interview or newspaper article, consultations with community groups and caregivers, classroom presentations, and small group workshops and training to promote a program or educate the community. Meetings directly related to planning such events may also be counted here. Examples: Family Service Self-Help Center planning and hosting of a biannual self-help conference; newsletters published by the East Central Illinois Refugee Mutual Assistance Center.

A Service Contact (SC), also referred to as a screening contact or service encounter, represents the number of times a program has contact with consumers. Sometimes this can be on behalf of someone who is being served by the program. Or it can be sharing of information, fielding a call about services, or doing an initial screenings or assessment. Example: number of calls answered by the Crisis Line run by Rosecrance.

A Non-Treatment Plan Client (NTPC) is someone for whom services are provided and a record of the service exists but an individualized treatment plan has not been necessary or one was initiated but does not completed. Example: a person who comes into the domestic violence shelter at Courage Connection but leaves within a few days before fully engaging in services.

A Treatment Plan Client (TPC) has traditionally meant people engaged in services where an assessment and treatment plan have been completed and case records are maintained. This applies to agencies such as Promise Healthcare, Rosecrance, and others. It can also represent an individual receiving a higher level of care within the spectrum of services provided within a program.

Most contracts are funded as grants while a few are paid on a fee for service basis or submit individual-level claims reports. For the two latter, details include number and type of units of service.

# Utilization Summaries for PY2022

## Champaign County Mental Health Board

### Funded Programs

TPC = Treatment Plan Client  
NTPC = Non-Treatment Plan Client  
CSE = Community Service Event  
SC = Screening Contact or Service Contact  
Other = as defined in individual program contract

*Many of the contract award amounts listed are not equal to actual cost of the program, as agencies are completing independent audit reports, which will be used to determine any excess revenue to be returned; excess revenue often results from understaffing, one cause of underutilization. These may result in future revisions to this report.*

*Detail on each program's performance toward defined consumer outcomes during the contract period, July 1, 2021 to June 30, 2022, is available at <http://ccmhddbrds.org>, among downloadable public files toward the bottom of the page. The relevant document is titled "CCMHB PY22 Performance Outcome Reports."*

---

#### ***Priority: Intellectual/Developmental Disabilities - Collaboration with Champaign County Developmental Disabilities Board (CCDDB), focus on Young Children***

---

#### ***Champaign County Regional Planning Commission Head Start/Early Head Start Early Childhood Mental Health Services \$121,999 (for I/DD Services)***

Support from Social Skills & Prevention Coaches including: assisting teaching staff and parents in writing individualized social-emotional goals to include in lesson plans for children identified through screening; developing with parents and teaching staff an Individual Success Plan for children who exhibit challenging behaviors; offering teachers social and emotional learning strategies; monitoring children's progress and outcomes; and providing information to families and staff. Facilitation of meetings with a child's parent(s) and teaching staff throughout the process of the child receiving services as well as supporting parents and teaching staff with resources, training, coaching, and modeling. (*\$204,370 of the total contract is for Mental Health services, and \$121,999 is for I/DD – targets and data are combined for both populations and reported here.*)

**Utilization targets:** 90 TPC, 400 NTPC, 5 CSE, 3,000 SC, 12 Other (workshops, trainings, professional development efforts with staff and parents).

**Utilization actual:** 163 TPC, 421 NTPC, 4 CSE, 2954 SC, 15 Other (workshops, trainings, professional development efforts with staff and parents).

DSC

**Family Development \$596,522**

Serves children birth to five years, with or at risk of developmental disabilities and their families. FDC responds to needs with culturally responsive, innovative, evidence-based services. Early detection and prompt, appropriate intervention can improve developmental outcomes for children with delays and disabilities and children living in at-risk environments. Family-centered intervention maximizes the gifts and capacities of families to provide responsive intervention within familiar routines and environments.

**Utilization targets:** 655 TPC, 200 SC, 15 CSE.

**Utilization actual:** 815 TPC, 173 SC, 13 CSE

---

### ***Priority: System of Care for Children, Youth, Families***

---

#### *Champaign County RPC Head Start/Early Head Start*

**Early Childhood Mental Health Services** \$204,370 (for MH Services)

*See above for service information and year-end data, disability types combined.*

#### *Courage Connection*

**Courage Connection** \$127,000

A family's immediate safety is intimately connected to their long-term success. A community's stability is threatened when any family is in danger. Courage Connection helps victims and survivors of domestic violence rebuild their lives through advocacy, housing, counseling, court advocacy, self-empowerment, community engagement, and community collaborations.

**Utilization targets:** 440 TPC, 115 NTPC, 610 SC, 150 CSE

**Utilization actual:** 691 TPC, 137 NTPC, 614 SC, 199 CSE

#### *Crisis Nursery*

**Beyond Blue – Champaign County** \$90,000

Serves mothers who have or are at risk of developing perinatal depression (PD), targeting mothers who demonstrated risk factors for PD and are pregnant or have a child under age one. Individual and group support and education to facilitate healthy parent-child engagement. Research suggests that 10-20% of mothers suffer from PD, nearly half are undiagnosed. Addresses risk factors that lead to emotional disturbances and multiagency and system involvement in children. Works to increase awareness of PD and reduce stigma.

**Utilization targets:** 33 TPC, 77 NTPC, 522 SC, 128 CSE, 1138 Other (hours of in-kind/respite care)

**Utilization actual:** 33 TPC, 80 NTPC, 423 SC, 104 CSE, 1685.5 Other

#### *Cunningham Children's Home*

**Families Stronger Together** \$403,107

Trauma informed, culturally responsive, therapeutic services to build resiliency in families with youth aged ten to seventeen who are or at risk of involvement in the juvenile justice system. Level of engagement with the family is based on

assessed need and can last anywhere from one month to ten months. The therapeutic services apply the Attachment, Regulation, and Competency (ARC) treatment framework. Range of services provided can include individual therapy, family therapy, psychoeducation services, care coordination, intensive family engagement, and aftercare.

**Utilization targets:** 50 TPC, 25 NTPC, 1125 SC, 10 CSE

**Utilization actual:** 43 TPC, 13 NTPC, 820 SC, 13 CSE

#### *DREAAM House*

##### **DREAAM Big!** \$100,000

A prevention and early intervention program for boys, aimed at cultivating academic excellence and social emotional health. Designed to increase positive outcomes (academic achievement, self-efficacy, social mobility) and decrease negative outcomes (suspensions, low educational performance, violence).

Evidence-informed components: 1) day-long summer program, 2) 5-day week, after-school program, 3) school-based mentoring, 4) Saturday athletic activities, and 5) family engagement and training. Embedded in each component is social emotional learning and behavioral health instruction to foster transfer of skills from DREAAM House to school to home. DREAAM Big! expands the program.

**Utilization targets:** 115 TPC, 100 NTPC, 450 SC, 25 CSE

**Utilization actual:** 124 TPC, 114 NTPC, 439 SC, 27 CSE

#### *Don Moyer Boys & Girls Club*

##### **CU Change** \$100,000

The program seeks to impact under-resourced youth with potential for high school graduation by providing group and individual support, counseling, life skills training, and exposure to positive cultural and healthy life choices.

Emphasizes academic support, community engagement, interactive, hands on learning experiences and exposure to positive life alternatives. Assists youth with navigating obstacles to success in the school environment, increasing positive peer and community involvement and developing a positive future plan.

**Utilization targets:** 50 TPC, 70 NTPC, 1000 SC, 144 CSE

**Utilization actual:** 27 TPC, 14 NTPC, 172 SC, 83 CSE

#### *Don Moyer Boys & Girls Club*

##### **CUNC** \$110,000

An initiative designed to increase community understanding of trauma and expand community capacity to implement trauma-informed practices and procedures. Goals are: addressing the needs of those impacted by trauma and violence and creating more supportive and healed communities. Accomplished through training community members, focusing on youth leaders and elder helpers, and educating the community about trauma and trauma-informed care. Emphasis is placed on increased access to trauma informed, culturally responsive skills-based groups and resiliency building opportunities through groups for mothers and caregivers impacted by community violence; groups for

adults impacted by gun violence; and groups or community workshops for teens designed to build social connections.

**Utilization targets:** 120 NTPC, 150 SC, 127 CSE

**Utilization actual:** 215 NTPC, 143 SC, 129 CSE

*Don Moyer Boys & Girls Club*

**Community Coalition Summer Initiatives \$107,000**

Services and supports by specialized providers, through subcontract to Don Moyer Boys and Girls Club, to engage Champaign County's youth in a range of positive summer programming: strengthening academics; developing employment skills and opportunities; athletics; music and arts instruction; etc. Supports and reinforces System of Care principles and values particularly relative to system-involved youth impacted with emotional and environmental challenges. Reports to and through the Champaign County Community Coalition.

**Utilization targets:** 700 NTPC, 14000 SC, 40 CSE, 500 Other

**Utilization actual:** 32 CSE, 11400 SC, 870 NTPC, 300 Other

*Don Moyer Boys & Girls Club*

**Youth and Family Services \$160,000**

Family-driven, youth-guided services for and with families and children experiencing mental health and/or emotional challenges. Supports are offered at home, in school, and in the community for optimal recovery. Partnering with caregivers to provide the best-fit, most comprehensive services and supports possible. Peer-driven support from those with lived experiences and challenges, educational opportunities to make informed decisions, and technical support to help navigate complicated systems for the best possible outcomes for each individual and their family.

**Utilization targets:** 35 TPC, 20 NTPC, 400 SC, 10 CSE

**Utilization actual:** 18 TPC, 14 NTPC, 840 SC, 21 CSE

*Mahomet Area Youth Club*

**Bulldogs Learn & Succeed Together (BLAST) \$15,000**

Programming for students K-12 includes enrichment activities, academic help, and cultural and community-based programming. MAYC partnered with Mahomet Seymour Schools District in this endeavor for several reasons: it allows the use of district facilities, providing a safe and structured environment, children participate in activities in their own school community, additional contact with teachers, school staff, social workers, and guidance counselors, specialized learning spaces (including computer labs, gyms, music and art rooms), access to a variety of caring community volunteers, and most importantly, an inclusive environment that brings students from all economic backgrounds together. Open to all students but targeting low income and/or struggling students, making the program available at no cost.

**Utilization targets:** 12 TPC, 80 NTPC, 2200 SC, 1000 CSE

**Utilization actual:** 17 TPC, 123 NTPC, 7262 SC, 1546 CSE

*Mahomet Area Youth Club*

**MAYC Members Matter! \$21,905**

Emphasizes five core values: Character and Stewardship; Health and Life Skills; Education and Leadership; Creative Arts and Expression, and Sports and Recreation. The MAYC Junior High Club operates Monday thru Friday from 3:30 to 6:00pm on school days that provides a safe place for up to 40 students at no cost, to study, socialize with peers, play sports and games, and establish meaningful relationships with caring adults. Goals for this program are consistent attendance at school, improved grades, and graduating on time. The out-of-school program operates Monday thru Friday from 7am to 6pm, offering activities including educational STEM related projects/activities, arts and crafts, recreation and physical fitness including swimming and trips around the community. Goals for this program are increased meaningful adult and peer connections, physical activity, knowledge of health and nutrition, food security, brain stimulating activities and retention of knowledge gained during the school year.

**Utilization targets:** 15 TPC, 150 NTPC, 5750 SC, 200 CSE

**Utilization actual:** 38 TPC, 388 NTPC, 6251 SC, 281 CSE

*Rosecrance Central Illinois*

**Prevention Services \$60,000**

An evidence-based life skills and drug education curriculum for Champaign County students. Programs available for preschool through high school. Sessions on health risks associated with the use of alcohol, tobacco and other drugs. Life skills sessions may include instruction on and discussion of refusal skills, self-esteem, communicating with parents, and related social issues. Prevention team are active members of several anti-drug and anti-violence community-wide coalitions working to reduce youth substance abuse.

**Utilization targets:** 975 CSE

**Utilization actual:** 1377 CSE

*UP Center (Uniting Pride) of Champaign County*

**Children, Youth & Families Program \$86,603**

Serves LGBTQ adolescents aged 11-18; LGBTQ families; and children dealing with issues related to the stigmatization of their gender and sexual identifications and identities. Services include provision of social-emotional supports, non-clinical crisis intervention, case management referrals, risk reduction strategies, strengths development, community-building events, and management of adult volunteers within this program. Program provides a weekly adolescent non-clinical support group.

**Utilization targets:** 90 NTPC, 250 SC, 50 CSE

**Utilization actual:** 145 NTPC, 333 SC, 273 CSE

*Urbana Neighborhood Connections*

**Community Study Center \$25,500**

Empowerment zone which youth benefit from productive year-round academic, recreational, and social-emotional supplements. Point of contact for information,

linkage and referral to community resources. Study Center provides opportunity to engage school aged youth in non-traditional, practical intervention and prevention approaches for addressing difficulties. In individual and group activities facilitated/supervised by program staff and volunteers, participants can process feelings in a secure and supportive environment.

**Utilization targets:** 75 NTPC

**Utilization actual:** 163 NTPC

---

***Priority: Crisis Response and Intervention***

---

*Champaign County Children's Advocacy Center (CAC)*

**Children's Advocacy** \$56,425

Promoting healing and justice for children/youth who have been sexually abused. Offers a family-friendly initial investigative interview site; supportive services for the child and non-offending family promoting healing; and abuse investigation coordination. Most of the young people served are victims of sexual abuse. Provides services for victims of severe physical abuse and of child trafficking. Trauma inflicted by these crimes is deep; with the right help the young person can begin to heal.

**Utilization targets:** 225 TPC, 45 NTPC, 270 SC, 8 CSE

**Utilization actual:** 270 TPC, 49 NTPC, 198 SC, 10 CSE

*Champaign County Health Care Consumers*

**Justice Involved CHW Services & Benefits** \$77,394

Community Health Worker services for people at the Champaign County jail. Services are offered on-site, to improve access to care upon discharge/release. Provider also coordinates with related programs and coalitions, toward improved response for those in crisis or incarcerated.

**Utilization targets:** 100 TPC, 20 NTPC, 160 SC, 8 CSE, 8 Other (Rx fund)

**Utilization actual:** 90 TPC, 34 NTPC, 722 SC, 12 CSE, 12 Other (Rx fund)

*Champaign County Regional Planning Commission – Community Services*

**Justice Diversion Program** \$207,948

The primary connection point for case management and services for persons who have Rantoul Police Department Crisis Intervention Team (CIT) and/or domestic contacts, offering case management with a goal to reduce criminal recidivism and help clients develop and implement plans to become successful and productive members of the community, offering law enforcement an alternative to formal processing. The JDP develops additional community resources and access to services in Rantoul and rural residents of the County. The expansion covers staff responding through the Sheriff's Office plus coordination of the justice-involved efforts.

**Utilization targets:** 52 TPC, 140 NTPC, 250 SC, 20 CSE

**Utilization actual:** 65 TPC, 103 NTPC, 80 SC, 131 CSE



*Champaign County Regional Planning Commission – Community Services*

**Youth Assessment Center (YAC) \$76,350**

Screens youth for risk factors and links youth/families to support and restorative community services. The YAC provides an alternative to prosecution for youth involved in delinquent activity. Case managers, using Trauma Informed Care and BARJ principles, screen juvenile offenders referred to our program to identify issues that might have influenced the offense and link youth to services to address the identified issues. Focused on helping youth be resilient, resourceful, responsible and contributing members of society.

**Utilization targets:** 55 TPC, 20 NTPC, 40 SC, 40 CSE, 50 Other (1<sup>st</sup> time refer)

**Utilization actual:** 34 TPC, 2 NTPC, 38 SC, 179 CSE, 104 Other (1<sup>st</sup> time refer)

*Family Service of Champaign County*

**Counseling \$30,000**

Affordable, accessible counseling services to families, couples and people of all ages. Clients are given tools and supports to successfully deal with life challenges such as divorce, marital and parent/child conflict, depression, anxiety, abuse, substance abuse/dependency and trauma. Strength-based, client driven services utilize family and other natural support systems and are respectful of the client's values, beliefs, traditions, customs and personal preferences. This program also collaborates with the Champaign County Drug Court, offering family and individual counseling to participants.

**Utilization targets:** 40 TPC, 30 NTPC

**Utilization actual:** 24 TPC, 13 NTPC

*FirstFollowers*

**FirstSteps Community Reentry House \$39,500**

A transition house for adult men returning home to Champaign County after incarceration. The program provides rent free housing in a five-bedroom house donated for use by the Housing Authority of Champaign County. Up to four men can be housed at a time. Staff assist the residents in transition, help them set up plans of action and goals, provide transportation to potential employment or service opportunities, and facilitate their integration into the community. Projected length of engagement is between three months to a year.

**Utilization targets:** 12 TPC, 30 NTPC, 10 SC, 12 CSE

**Utilization actual:** 8 TPC, 29 NTPC, 10 SC, 13 CSE

*First Followers*

**Peer Mentoring for Re-entry \$95,000**

Mission is to build strong and peaceful communities by providing support and guidance to the formerly incarcerated, their loved ones, and the community. Offers assistance in job searches, accessing housing and identification as well as emotional support to assist people during the transition from incarceration to the community. In addition, we carry out advocacy work aimed at reducing the

stigma associated with felony convictions and attempt to open doors of opportunity for those with a criminal background.

**Utilization targets:** 95 TPC, 290 NTPC, 60 SC, 15 CSE

**Utilization actual:** 37 TPC, 125 NTPC, 30 SC, 25 CSE

*Rosecrance Central Illinois*

**Criminal Justice PSC** \$304,350

Individuals at the Champaign County Jail receive screening and, as appropriate, mental health assessment, substance abuse assessment, counseling, case management, individual and/or intensive outpatient substance abuse treatment, and linkage to additional supports as needed in the community.

**Utilization targets:** 90 TPC, 125 NTPC, 600 SC

**Utilization actual:** 74 TPC, 233 NTPC, 459 SC

*Rosecrance Central Illinois*

**Fresh Start** \$85,409

Aimed at addressing the root cause of the violence, customized for our community in coordination with the Champaign Community Coalition's Fresh Start Initiative, involving a 3-pillar approach – Community, Law Enforcement, and a Case Manager. Identifies and focuses on individuals with history of violent, gun-related behaviors. Participants are offered an alternative to violence, with intensive case management, assistance accessing services (such as medical, dental, behavioral health) to address immediate personal or family issues and to overcome barriers to employment, housing, education.

**Utilization targets:** 15 TPC, 10 NTPC, 10 SC, 90 CSE, 50 Other

**Utilization actual:** 14 TPC, 12 NTPC, 7 SC, 103 CSE, 226 Other

*Rosecrance Central Illinois*

**Specialty Courts** \$169,464

People sentenced to Champaign County Drug Court receive substance use disorder assessment, individualized treatment planning, individual counseling sessions, and a wide array of education and therapeutic groups. Case manager provides intensive case management to connect the clients to overcome barriers to treatment, such as access to food, clothing, medical and dental services, mental health treatment, employment, housing, education, transportation, and childcare.

**Utilization targets:** 50 TPC, 1400 SC, 4 CSE, 5,000 Other = # hours case management, # hours counseling. Other represents services funded by other sources leveraged through CCMHB support for non-billable activities crucial to the operation of the Specialty Court.

**Utilization actual:** 28 TPC, 663 SC, 3 CSE, Other 3,425 (hours assessment, hours case management, and hours counseling).

*Women in Need (WIN) Recovery*

**Re-Entry & Recovery Home** \$69,488

Gender-responsive, trauma-informed health-promoting services for women as an alternative to incarceration upon reentry. Supports include service navigation and assistance to meet individualized self-identified needs that may include housing, case management, support plan with self-identified goals and assessments of progress, physical/mental/emotional health care services, substance misuse/trauma recovery, education, employment, legal assistance, leadership training, peer-facilitated support groups, civic participation/community outreach, family therapy/reunification, compliance with parole/probation/DCFS/other agencies, and recovery-based programming. All residents are provided curriculum books for trauma, parenting, and recovery classes.

**Utilization targets:** 7 CSE, 20 SC, 0 NTPC, 30 TPC

**Utilization actual:** 13 CSE, 65 SC, 9 NTPC, 42 TPC

---

### ***Priority: Innovative Practices and Access to Behavioral Health Services***

---

#### *Champaign County Christian Health Center*

##### **Mental Health Care at CCCHC \$33,000**

Mental health screenings, primary care, prescriptions, and referrals to specialized care as needed. Any uninsured and underinsured resident of Champaign County, typically between the ages of 18 and 64, is eligible. Primary care providers treat or refer those with MH conditions, especially anxiety and depression. With this grant CCCHC will recruit new psychiatrists, psychologists, and counselors to provide direct MH care, greatly enhancing community resources. Recruiting strategies: contacting hospitals and health care facilities to promote CCCHC; targeting organizations that have potential MH volunteers; and connecting with a psychiatrist who runs a residency program to bring services to CCCHC patients. The expansion will support a paid part-time psychologist or psychiatrist.

**Utilization targets:** 160 TPC, 80 NTPC, 6 CSE

**Utilization actual:** 55 TPC, 47 NTPC, 2 CSE

#### *Champaign County Health Care Consumers*

##### **CHW Outreach & Benefit Enrollment \$80,274**

Enrollment in health insurance and other public benefit programs; help with maintenance of benefits; case management; education and outreach. Enrollment in Medicaid, Medicaid Managed Care, private plans through ACA Marketplace, Medicare for those eligible by virtue of age or disability, Medicare Extra Help, Medicare Savings Program to reduce the out-of-pocket costs, hospital/clinic financial assistance programs. Help applying for Promise Healthcare's sliding scale and completing the new patient packet. In-house Rx Fund for low-income individuals, enrollment in pharmaceutical assistance programs, SNAP and SafeLink phone program. Access to affordable dental and vision care. Case-management, referrals, advocacy to access other benefits and social services.

**Utilization targets:** 160 TPC, 36 NTPC, 650 SC, 20 CSE, 32 Other (Rx fund)

**Utilization actual:** 184 TPC, 7 NTPC, 1,835 SC, 21 CSE, 19 Other (Rx fund)

*Champaign County Health Care Consumers*

**Disability Services \$71,500**

Evaluations of disabling conditions and determinations of whether to apply for SSI or SSDI or both (depending on client's work history); assistance applying for SSI and/or SSDI; appealing adverse SSI and SSDI decisions; and coordinating with attorney, if necessary to appeal decisions. CCHCC will also provide emotional/psychological support for individuals applying for SSI or SSDI. Often, the decision to apply for disability, and the process of doing so, can be challenging to the individual as they must come to terms with the idea that they are "disabled." Additional services to be provided to help facilitate approval for SSI/SSDI include helping clients to access various health services to document their disabling conditions.

**Utilization targets:** 20 TPC, 5 NTPC, 640 SC, 4 CSE, 5 Other (Rx fund)

**Utilization actual:** 28 TPC, 14 NTPC, 940 SC, 4 CSE, 8 Other (Rx fund)

*Champaign County Regional Planning Commission – Community Services*

**Homeless Services System Coordination \$51,906**

Coordinator position to: support, facilitate, and direct the IL-503 Continuum of Care (CoC) aka Champaign County Continuum of Service Providers to the Homeless; to support the body's mission to end homelessness in Champaign County through a coordinated network of resources for those who are homeless or at-risk of becoming homeless; coordinate efforts across the CoC membership to support its goals and the Homeless Emergency and Rapid Transition to Housing (HEARTH) Act regulations; and build and maintain collaborative partnerships with CoC membership and affiliates, working closely with the CoC Executive Committee.

**Utilization targets:** 30 TPC, 40 SC, 26 CSE

**Utilization actual:** 31 TPC, 38 SC, 47 CSE

*Community Service Center of Northern Champaign County*

**Resource Connection \$68,609**

A multi-service program aimed at assisting residents of northern Champaign County with basic needs and connecting them with mental health and other social services. Serves as a satellite site for various human service agencies providing mental health, physical health, energy assistance, and related social services. Features an emergency food pantry, prescription assistance, clothing and shelter coordination, and similar services for over 1,700 households in northern Champaign County.

**Utilization targets:** 1150 NTPC, 4000 SC, 2200 Other (contacts with other agencies using CSCNCC as a satellite site)

**Utilization actual:** 620 NTPC, 2632 SC, 1023 Other

*Cunningham Children's Home*

**ECHO Housing and Employment Support \$101,604**

Works closely with individuals who are homeless or at risk of homelessness, through intensive case management and care coordination geared towards promoting permanent housing and employment and resolving barriers. The Case Manager takes a holistic approach to supportive services by countering possible barriers to goal stability (e.g., basic needs, child care, physical health, and mental health). Participants receive weekly services that last until 90 days after obtaining both housing and employment. Frequency of contact can vary depending on the need of the client, ranging from weekly to bi-monthly to monthly, and last up to a year.

**Utilization targets:** 20 TPC, 24 NTPC, 568 SC, 25 CSE

**Utilization actual:** 19 TPC, 5 NTPC, 846 SC, 37 CSE

#### *East Central IL Refugee Mutual Assistance Center*

##### **Family Support and Strengthening \$62,000**

Supports and strengthens refugee and immigrant families transitioning and adjusting to American culture and expectations. Provides orientation, information/referral, counseling, translation/interpretation services, culturally appropriate educational workshops, and help accessing entitlement programs. Bi-monthly newsletter and assistance to refugee/immigrant mutual support groups. Staff speaks nine languages and accesses community volunteers to communicate with clients in languages not on staff.

**Utilization targets:** 50 CSE, 15 Other (hours of workshops)

**Utilization actual:** 89 CSE, 13 Other

#### *Family Service of Champaign County*

##### **Self-Help Center \$28,430**

Information about and referral to local support groups. Provides assistance to develop new support groups and maintaining and strengthening existing groups. Program maintains a database of Champaign County support groups, national groups, and groups in formation. Information is available online and in printed directory and specialized support group listings. Provides consultation services, workshops, conferences, educational packets and maintains a lending library of resource materials.

**Utilization target:** 270 CSE

**Utilization actual:** 291 CSE

#### *Family Service of Champaign County*

##### **Senior Counseling & Advocacy \$162,350**

For Champaign County seniors and their families. Services are provided in the home or in the community. Caseworkers assist with needs and challenges faced by seniors, including grief, anxiety, depression, isolation, other mental health issues, family concerns, neglect, abuse, exploitation and need for services or benefits acquisition. Assists seniors providing care for adult children with disabilities and adults with disabilities age 18-59 experiencing abuse, neglect or financial exploitation.

**Utilization targets:** 400 TPC, 500 NTPC, 2500 SC

**Utilization actual:** 346 TPC, 182 NTPC, 998 SC

### *GROW in Illinois*

#### **Peer Support \$77,239**

Mutual-help; peer to peer 12-step program provides weekly support groups for mental health sufferers of all races and genders. GROW complements the work of professional providers by connecting people with others in similar situations and empowering participants to do that part which they can and must be doing for themselves and with one another. While professional providers offer diagnosis and treatment, consumer-providers offer essential rehabilitation and prevention services because of firsthand experience with the recovery process. Groups offered include in-person as well as virtual sessions for men and for women and are held in various locations around the County including the Champaign County Jail.

**Utilization targets:** 115 NTPC, 1,000 SC, 3 CSE

**Utilization actual:** 54 NTPC, 467 SC, 28 CSE

### *Promise Healthcare*

#### **Mental Health Services with Promise \$350,117**

On-site mental health services to achieve the integration of medical and behavioral health care as supported by both the National Council for Community Behavioral Healthcare and the National Association of Community Health Centers. Mental health and medical providers collaborate, make referrals, and even walk a patient down the hall to meet with a therapist. Patients receive mental illness treatment through counselor, psychiatrist or primary care provider. Counseling and psychiatry are available to patients at Frances Nelson and the satellite site at the Rosecrance Walnut Street location.

**Counseling Utilization targets:** 500 TPC, 2750 SC

**Counseling Utilization actual:** 619 TPC (average # TPCs per quarter =155; highest quarter total = 182), 1770 SC

**Psychiatric Utilization targets:** 1600 TPC, 850 NTPC receiving psych meds through primary care, 7500 SC psychiatric service encounters, 0 CSE lunch and learn sessions, 60% Other as denials (reported by business office).

**Psychiatric Utilization actual:** 4801 TPC (average # TPCs per quarter =1200; highest quarter total = 1221), 1064 NTPC (average # NTPCs seen in a quarter =266; highest quarter total = 298), 7837 psychiatric service encounters, 3 CSE lunch and learn sessions, 8.8% Other (claims denial rate).

### *Promise Healthcare*

#### **Promise Healthcare Wellness \$107,987**

Support, case management, medication assistance, and benefit enrollment for patients with non-clinical barriers to achieving optimum medical and mental health care. Patients who have a mental health need, those who have psychosocial support needs, and those who have been identified as having barriers to executing their treatment plan are prioritized for Wellness services. Coordinators assist patients with access to medications, social service needs, linkage with

other agencies, and enrolling eligible patients in Medicaid and Marketplace insurance. The program is also charged with facilitating care at our Rosecrance satellite and supporting collaborations and outreach.

**Utilization targets:** 205 TPC, 480 NTPC, 1600 SC, 30 CSE, 2400 Other (enrolled in healthcare coverage)

**Utilization actual:** 211 TPC (average # TPCs per quarter = 53, highest quarter total = 55), 567 NTPC (average # NTPCs per quarter = 142, highest quarter total = 186), 873 SC, 38 CSE, 3045 Other

#### *Rape Advocacy, Counseling & Education Services*

##### **Sexual Violence Prevention Education \$63,000**

The only agency charged with providing comprehensive services to victims of sexual assault in Champaign County. Trauma-informed counseling, 24-hour crisis hotline, and in-person advocacy at hospital Emergency Departments and at meetings with law enforcement or Courthouse. Also offers prevention education to thousands of local children and adults per year and conducts community events to further the aim to create a world free of sexual violence.

**Utilization targets:** 4000 (# attending) SC, 600 CSE, 40 Other (JDC presentations)

**Utilization actual:** 5757 (# attending) SC, 964 CSE, 0 Other

#### *Rattle the Stars*

##### **Suicide Prevention Education \$86,500 (ended Q1, decreased to \$21,625)**

Designed to build skills and improve competence to encourage intervention between peers, and by parents and adults. Covering three core areas for intervention: what to look for to recognize mental illness, mental health crises, and suicidal thoughts; how to intervene by using appropriate and effective communication skills; and accessing necessary resources for professional care. Developed from evidence informed models and adheres to best practices suggested by nationally recognized mental health and suicide prevention agencies.

**Utilization targets:** 200 CSE

**Utilization actual:** 27 CSE. Contract terminated on September 30, 2021

#### *Rosecrance Central Illinois*

##### **Crisis, Access, & Benefits \$203,960**

A 24-hour program including Crisis Team and Crisis Line. Clinicians provide immediate intervention by responding to crisis line calls and conducting crisis assessments throughout Champaign County. The Crisis Team works closely with hospitals, local police, the University, and other local social service programs. Offers access services including information, triage, screening, assessment, and referral for consumers and members of the community.

**Utilization targets:** 1000 NTPC (intake screenings, mental health assessments), 3000 SC (crisis calls), 15 CSE, Other = 250 (benefits applications).

**Utilization actual:** 668 NTPC (intake screening or mental health assessments), 3505 SC (crisis calls), 8 CSE, Other = 225 benefits applications.

Program also reports 564 (in county) Crisis team contacts (not a subset of crisis calls) and 703 mental health assessments by Crisis team.

*Rosecrance Central Illinois*

**Recovery Home \$200,000**

Therapeutic interventions that facilitate: removal of barriers for safe/supportive housing; 12-Step support involvement; independent living skills; education/vocational skills; identification and use of natural supports; use of community resources; and peer support. Evidence based practices to be used include: 12-Step model and peer support; Level system; Case Management; and Contingency management initiatives.

**Utilization targets:** 22 TPC, 70 SC

**Utilization actual:** 27 TPC, 61 SC

*Terrapin Station Sober Living, Inc.*

**Recovery Home \$47,000**

Strength-based case management, grounded in the principles that all individuals have the capacity to change and grow. Focused on individual strengths, not pathology. The individual is the director of their care and their recovery. Weekly group services and house meetings provided. Also provided: intensive individualized case management; support activities for daily living and relapse prevention skills; access to vocational/educational programs; assistance in linking clients to medical, psychiatric, counseling; and dental services in the community; education on money management/budgeting; education on accessing peer or community supports and activities such as church, AA/NA meetings, other sobriety based/mental health support groups, recreational activities, transportation services, and service work/volunteer/work opportunities.

**Utilization targets:** 13 NTPC

**Utilization actual:** 8 NTPC

*The Well Experience*

**Family Services \$80,000**

Services provided to Black/African American girls, women, teens, and families. Services include wraparound services, crisis management, mental health services, etc. and are dedicated to underserved, oppressed, and at-risk populations who are referred for services. Our goal is never to turn a family away when they are in need of social service support. Programs provided include: Wraparound Support, Universal Support, RENEW Her, WELL Mentoring, Girls To Life, The SET, Well Teen Moms, HERE For the Girl, TEEN Talk, Family Game Night, Well Fitness, Mothering While Black, Remote Learning Hub, WELL Kids Summer, and After School Program.

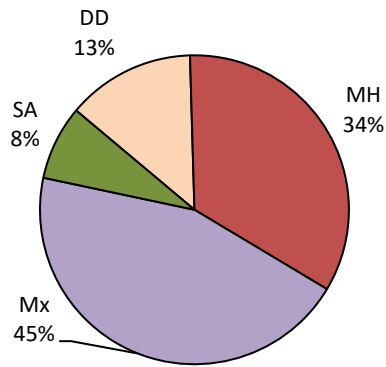
**Utilization targets:** 4 CSE, 300 SC, 150 NTPC, 50 TPC

**Utilization actual:** 7 CSE, 1542 SC, 262 NTPC, 157 TPC



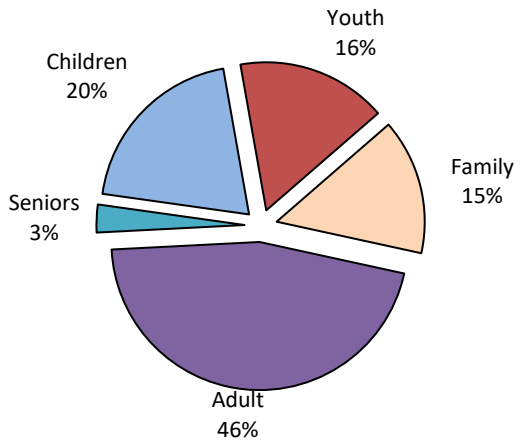
# Appropriation of CCMHB Funds by Sector, Population, and Service - Program Year 2022

**CCMHB PY22 Appropriation by Community Mental Health Sector**



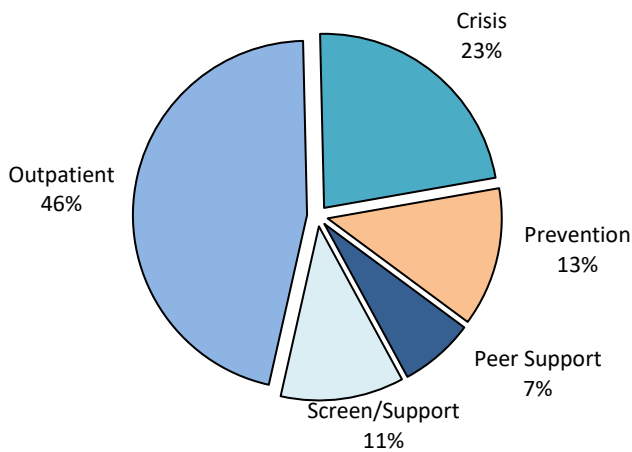
Appropriation by Sector/Diagnosis Type:  
 Developmental Disabilities - 13%  
 Mental Health - 34%  
 Substance Use Disorders - 8%  
 Multiple Diagnoses - 45%

**CCMHB PY22 Appropriation by Target Population**



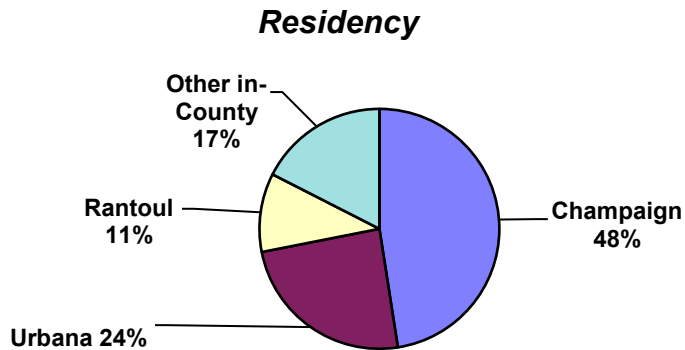
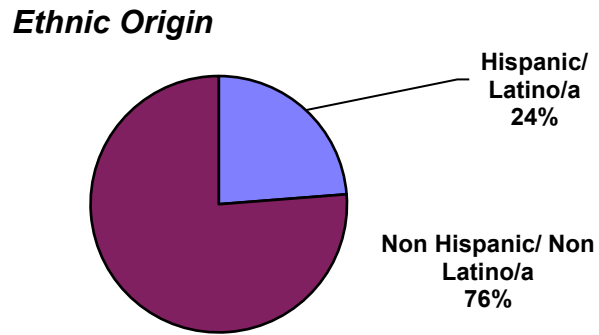
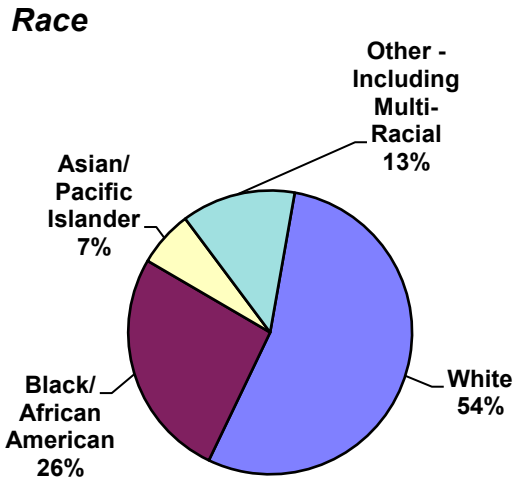
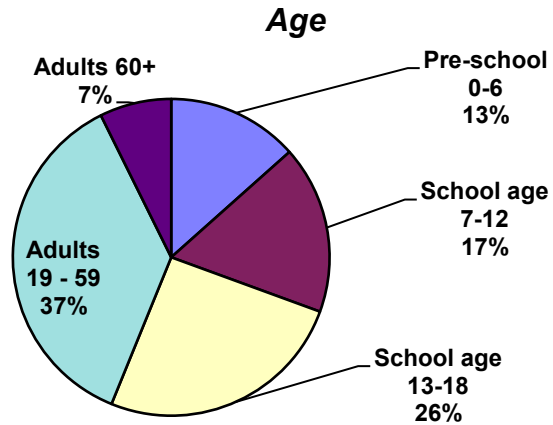
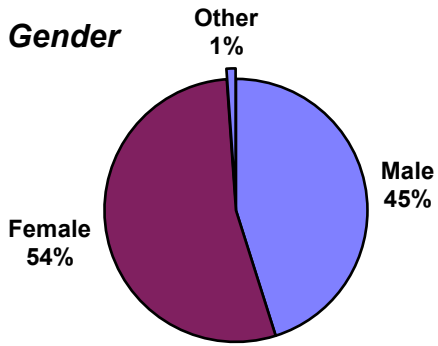
Appropriation by Age Range of Target Population:  
 Children - 20%  
 Youth - 16%  
 Adult - 46%  
 Seniors - 3%  
 Families - 15%

**CCMHB PY22 Appropriation by Type of Service**



Appropriation by Type of Service:  
 Crisis - 23%  
 Prevention - 13%  
 Peer Support - 7%  
 Screening/Support - 11%  
 Outpatient - 46%

## DEMOGRAPHIC AND RESIDENCY DATA FOR PERSONS SERVED IN PY2022



SECTION II: Three-Year Plan 2022-2024  
with FY 2023 One-Year Objectives

**CHAMPAIGN COUNTY MENTAL HEALTH BOARD**

# **THREE-YEAR PLAN**

**FOR**

**FISCAL YEARS 2022-2024**

**(1/1/2022 – 12/31/2024)**

**WITH**

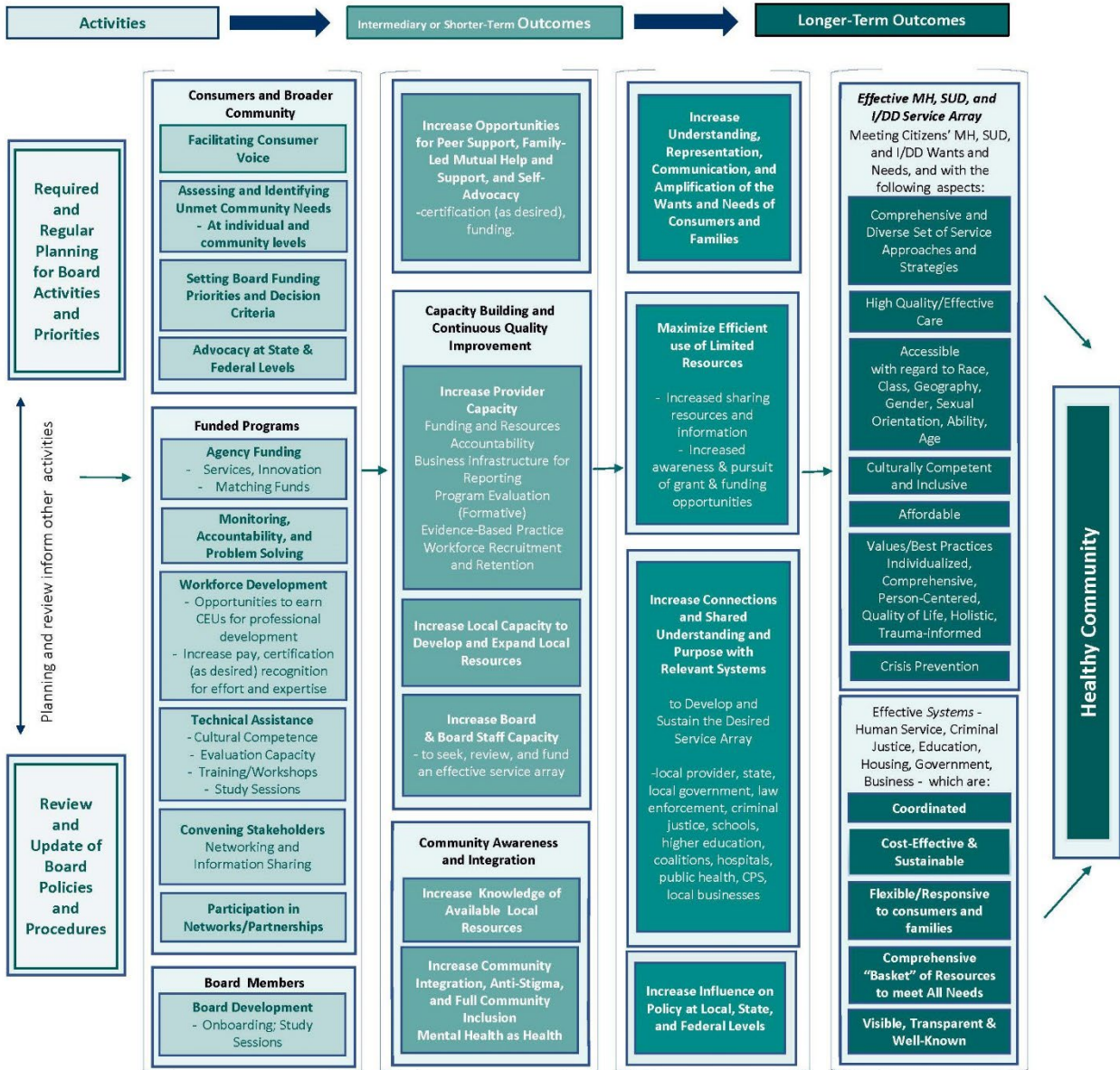
**ONE YEAR OBJECTIVES**

**FOR**

**FISCAL YEAR 2023**

**(1/1/2023 – 12/31/2023)**

Purpose:  
*To promote health and wellbeing in the community through the promotion of a local system of services for the prevention and treatment of mental or emotional, intellectual or developmental, and substance use disorders, in accordance with the assessed priorities of the citizens of Champaign County.*



**Champaign County Mental Health Board**  
**Three Year Plan for 2022-2024 with One Year Objectives**

*Logic Model Developed by Board and Staff with the UIUC Evaluation Capacity Building Project Team during Spring 2021*

## **CHAMPAIGN COUNTY MENTAL HEALTH BOARD**

**WHEREAS**, the Champaign County Mental Health Board has been established under Illinois Revised Statutes (405 ILCS – 20/Section 0.1 et. seq.) in order to "construct, repair, operate, maintain and regulate community mental health facilities to provide mental health services as defined by the local community mental health board, including services for, persons with a developmental disability or substance use disorder, for residents thereof and/or to contract therefor..."

**WHEREAS**, the Champaign County Mental Health Board is required by the Community Mental Health Act to prepare a one- and three-year plan for a program of community mental health services and facilities;

**THEREFORE**, the Champaign County Mental Health Board does hereby adopt the following Mission Statement and Statement of Purposes to guide the development of the mental health plan for Champaign County:

### **MISSION STATEMENT**

*The mission of the CCMHB is the promotion of a local system of services for the prevention and treatment of mental or emotional, intellectual or developmental, and substance use disorders, in accordance with the assessed priorities of the citizens of Champaign County.*

### **STATEMENT OF PURPOSES**

1. To plan, coordinate, evaluate, and allocate funds for the comprehensive local system of mental health, intellectual and developmental disabilities, and substance use disorder services for Champaign County.
2. To promote family-friendly community support networks for the at-risk, underserved, and general populations of Champaign County.
3. To increase public and private support for the local system of services.
4. To further develop systematic exchange of information about local services and needs between the public/private service systems and the CCMHB.

To accomplish these purposes, the Champaign County Mental Health Board must collaborate with the public and private sectors in providing the resources necessary for the effective functioning of the community mental health system.

# **COORDINATED SYSTEMS OF CARE**

## **Goal #1:**

Support a continuum of services to improve the quality of life experienced by individuals with mental or emotional disorders, substance use disorders, or intellectual and/or developmental disabilities and their families residing in Champaign County.

**Objective 1.1:** With clear connection between the model and best outcomes for people served, encourage use of appropriate evidence-based, evidence-informed, recommended, innovative, or promising practice models. (Allocation Priority/Criteria Objective)

**Objective 1.2:** Promote wellness for people with mental illnesses, substance use disorders, or intellectual and/or developmental disabilities to prevent and reduce early mortality, through support services including access to services addressing basic needs, enrollment in benefit plans and coordinated access to primary care. (Allocation Priority/Criteria Objective)

**Objective 1.3:** Support development or expansion of residential and employment supports for persons with behavioral health diagnoses and no other payor source. (Allocation Priority/Criteria Objective)

**Objective 1.4:** Encourage and participate in community efforts to prevent overdose deaths and expand substance use disorder prevention and treatment. (Allocation Priority/Criteria and Collaboration/Coordination Objective)

**Objective 1.5:** Build resiliency and support recovery e.g. peer supports, outside of a clinical setting. Peer-run/operated, mutual help groups support professional medical therapy for recovery, maintenance of recovery, and familial support. (Allocation Priority/Criteria Objective)

**Objective 1.6:** Utilizing expertise of consultant(s) selected through RFP2022-010, build evaluation capacity of contracted providers in order to

improve positive outcomes for those engaging in funded services. (Policy Objective)

**Objective 1.7:** Engage with consultant(s) selected through RFP2022-010 to improve providers' ability to set internal goals for advancing program performance outcome evaluation. (Policy Objective)

**Objective 1.8:** Support targeted efforts for workforce recruitment and retention initiatives, with level of assistance linked to length of service commitment. (Allocation Priority/Criteria Objective)

**Objective 1.9:** Enable providers to implement flexible service options, such as telehealth or other virtual means, to maintain access and engagement with clients and community. (Collaboration/Coordination Objective)

## **Goal #2:**

Sustain commitment to addressing health disparities experienced by historically underinvested populations.

**Objective 2.1:** Support an inclusive network of culturally and linguistically responsive and family driven support groups. (Allocation Priority/Criteria Objective)

**Objective 2.2:** Provide technical assistance for continuous improvement of funded agency providers' cultural and linguistic competence plans to meet the needs of all people served. (Collaboration/Coordination Objective)

**Objective 2.3:** Encourage providers and other community-based organizations to allocate resources to provide training, seek technical assistance, provide language access and communication assistance, and pursue other professional development activities for all staff and governing or advisory boards to advance cultural and linguistic competence. (Allocation Priority/Criteria Objective)

**Objective 2.4:** Where families and communities are disproportionately impacted by incarceration, encourage the development of social networks



and improved access to resources. (Allocation Priority/Criteria and Policy Objective)

**Objective 2.5:** Assess and address the needs of residents of rural areas and farm communities, with assistance from the Regional Health Plan Collaboration. (Collaboration/Coordination and Policy Objective)

**Objective 2.6:** With assistance from the Regional Health Plan Collaboration, assess the impact of public health threats on racial, ethnic, gender and/or sexual minority groups or other at-risk populations in Champaign County. Encourage providers to improve health and behavioral health outcomes for all residents. (Collaboration/Coordination and Allocation Priority/Criteria Objective)

**Goal #3:**

On behalf of all eligible Champaign County residents, improve access to the supports, services, and resources currently available and beneficial to some.

**Objective 3.1:** Participate in and report on various coordinating councils whose missions align with the needs of the populations of interest to the Board with the intent of strengthening coordination between providers in the delivery of services. (Collaboration/Coordination Objective)

**Objective 3.2:** Communicate on issues of mutual interest with the C-U Public Health District and the Champaign County Board. (Collaboration/Coordination Objective)

**Objective 3.3:** Engage with CUPHD, United Way, Carle Foundation Hospital, and OSF in the Regional Health Plan Collaboration toward the next Community Health Improvement Plan. (Collaboration/Coordination Objective)

**Objective 3.4:** Increase awareness of community services and access to information on when, where, and how to apply for services, including

through system navigators and expanded language access.  
(Collaboration/Coordination Objective)

**Objective 3.5:** Encourage providers to offer services in neighborhood community centers to reach all areas and people of Champaign County.  
(Collaboration/Coordination Objective)

**Goal #4:**

Continue the collaborative working relationship with the Champaign County Board for Care and Treatment of Persons with a Developmental Disability (CCDDB).

**Objective 4.1:** Coordinate integration, alignment, and allocation of resources with the CCDDB to ensure the efficacious use of resources for people with I/DD. (Allocation Priority/Criteria Objective)

**Objective 4.2:** Assess alternative service strategies that empower people with I/DD and increase access to integrated community settings. (Policy Objective)

**Objective 4.3:** Collaborate with the CCDDB on promoting inclusion and respect for people with I/DD. (Allocation Priority/Criteria and Collaboration/Coordination Objective)

**Objective 4.4:** Collaborate with the CCDDB for use of the funds from the sale of the CILA homes to meet the needs of Champaign County residents with I/DD with significant support needs. (Policy and Allocation Priority/Criteria Objective)

## ***CHILDREN AND FAMILY FOCUSED PROGRAMS AND SERVICES***

**Goal #5:**

Building on progress achieved through the six-year Cooperative Agreement between the Federal Substance Abuse and Mental Health Services Administration (SAMHSA), the Illinois Department of Human Services (IDHS), and the Champaign County Mental

Health Board (CCMHB), sustain the SAMHSA/IDHS system of care model.

**Objective 5.1:** Participate in the Champaign County Community Coalition and other system of care initiatives. (Collaboration/Coordination Objective)

**Objective 5.2:** Sustain and build on the successes of Champaign County family-run organizations that incorporate family-driven and youth-guided principles in use of peer support specialists, and other peer-to-peer supports to assist multi-system involved youth and their families (Allocation Priority/Criteria Objective)

**Objective 5.3:** Support development of a coordinated response to community violence, including gun violence, that leverages existing investments by the Board in prevention and early intervention services for children, youth, and families, with funds from other funders to mitigate the public health crisis associated with community violence and in particular gun violence. (Collaborative/Coordination and Policy Objective)

**Objective 5.4:** Promote and support those targeted interventions that specifically address historical trauma experienced by African American and other minority youth. (Allocation Priority/Criteria Objective)

**Objective 5.5:** Sustain commitment to building systems that are trauma-informed, family-driven, youth-guided, and culturally responsive. (Policy Objective)

**Objective 5.6:** Acknowledging racial trauma as a mental health issue, develop or identify an appropriate response. (Policy Objective)

**Objective 5.7:** Identify or create opportunities to advocate at local, state, and national levels for full implementation and funding of safety net, screening, and crisis response for all children and families, including those

with multi-system involvement or encountering multiple barriers to success and health. (Collaboration/Coordination Objective/Policy Objective)

## **CRIMINAL JUSTICE AND MENTAL HEALTH SYSTEM COLLABORATION**

### **Goal #6:**

Divert persons with behavioral health needs or intellectual and/or developmental disabilities from the criminal justice system, as appropriate.

**Objective 6.1:** Continue involvement in the Crisis Intervention Team Steering Committee in support of increased collaboration between law enforcement and crisis service providers toward positive health and behavioral health outcomes for all Champaign County residents. (Collaboration/Coordination Objective)

**Objective 6.2:** Sustain efforts to engage persons with behavioral health diagnoses re-entering the community from jail or prison or with recent involvement with the criminal justice system, in treatment and other support services such as the Champaign County Problem Solving Court and reentry services. (Allocation Priority/Criteria Objective)

**Objective 6.3:** Support integrated planning and service coordination for adults involved in the criminal justice system through participation in the Champaign County Reentry Council or similar body to address identified needs. (Collaboration/Coordination Objective)

**Objective 6.4:** Through the National Association of County Behavioral Health and Developmental Disability Directors (NACBHDD), in its partnership with the National Association of Counties (NACo), use and promote technical assistance and support through collaborative and mentorship opportunities aimed at improving outcomes for those with behavioral health needs and justice system involvement. (Collaboration/Coordination Objective)

### **Goal #7:**

In conjunction with the Champaign County Sheriff's Office, other law enforcement, and community stakeholders, pursue a

continuum of services as an alternative to incarceration and/or overutilization of local emergency departments for persons with behavioral health needs or developmental disabilities.

**Objective 7.1:** Support local collaborations to increase housing and employment supports for persons with a mental illness, substance use disorder, and/or intellectual and developmental disabilities. (Allocation Priority/Criteria and Collaboration/Coordination Objective)

**Objective 7.2:** Identify supports and services which reduce unnecessary incarceration and institutionalization, including behavioral health assessments, crisis stabilization, and treatment for addictions. (Collaboration/Coordination Objective)

**Objective 7.3:** Collaborate in the planning and implementation of 988, mobile crisis response, and other crisis supports. (Allocation Priority/Criteria Objective, Collaboration/Coordination Objective)

**Goal #8:**

Support interventions for youth who have juvenile justice system involvement.

**Objective 8.1:** Through participation on the Youth Assessment Center Advisory Committee or other similar collaboratives, advocate for community and education-based interventions contributing to positive youth development and decision-making. (Collaboration/Coordination Objective)

**Objective 8.2:** Through participation in the Champaign County Community Coalition and other community focused initiatives, encourage multi-system collaborative approaches for improving outcomes for youth and families and communities. (Collaboration/Coordination Objective)

## ***COMMUNITY ENGAGEMENT & ADVOCACY***

**Goal #9:**

Address the need for acceptance, inclusion, and respect associated with a person's or family members' mental illness, substance use disorder, intellectual and/or developmental

disability through broad based community education efforts to increase community acceptance and positive self-image.

**Objective 9.1:** Continue support for and involvement in efforts to promote inclusion and challenge stigma and discrimination, such as the disABILITY Resource Expo, Ebertfest, National Children's Mental Health Awareness Day, and other related community education events.  
(Collaboration/Coordination Objective)

**Objective 9.2:** Promote substance use disorder prevention initiatives as a community education tool targeting youth and young adults.  
(Collaboration/Coordination Objective)

**Objective 9.3:** Promote behavioral health community education initiatives, such as National Depression Screening Day, to encourage individuals to be screened and seek further assistance where indicated.  
(Collaboration/Coordination Objective)

**Objective 9.4:** Encourage and support efforts to more fully integrate people with behavioral health disorders and/or intellectual and/or developmental disabilities into community life in Champaign County.  
(Allocation Priority/Criteria Objective)

**Objective 9.5:** Support Mental Health First Aid for Adults, Youth, and Teens, to encourage community members to provide first responder support for people that may be experiencing signs and symptoms of a crisis. (Collaboration/Coordination Objective)

**Objective 9.6:** Support development of web-based resources to make information on community services more accessible and user-friendly.  
(Collaboration/Coordination Objective)

## **Goal #10:**

Engage with other local, state, and national stakeholders on emerging issues.

**Objective 10.1:** Monitor the local impacts of changes in Medicaid and Managed Care and advocate through active participation in the Association of Community Mental Health Authorities of Illinois (ACMHAI)

and other statewide associations and advocacy groups.  
(Collaboration/Coordination Objective)

**Objective 10.2:** Track state implementation of class action suit settlements involving persons with intellectual and/or developmental disabilities or mental illness, e.g. Ligas Consent Decree and Williams Consent Decree, and advocate for the allocation of state resources sufficient to meet needs of clients returning to home communities or seeking fuller integration in their communities. (Policy Objective)

**Objective 10.3:** Maintain active participation in the National Association of County Behavioral Health and Developmental Disability Directors (NACHBDD), National Association of Counties (NACo), and like-minded national organizations, to understand trends, best practices, and innovations and to advocate at the national level.  
(Collaboration/Coordination Objective)

**Objective 10.4:** Monitor State actions to implement terms of the NB vs Norwood Consent Decree (through the Pathways to Success program) to improve access and treatment to children and youth for community based mental health and behavioral health care under the Early and Periodic Screening, Diagnostic, and Treatment (EPSDT) provisions of the Medicaid Act. (Policy Objective)

**Objective 10.5:** Advocate at the state and national levels on the issue of behavioral health and intellectual and developmental disability workforce shortages. (Policy Objective)

***Approved November 16, 2022***