

# CHAMPAIGN COUNTY SHERIFF'S OFFICE

## ANNUAL REPORT 2019



**DUSTIN D. HEUERMAN, SHERIFF**

This page intentionally left blank.

## LETTER FROM THE SHERIFF

It has been my pleasure to serve as your Champaign County Sheriff over the last year. In a profession that is both challenging and rewarding, my goal at the end of the day is to ensure my Office is serving those living in, working in, and visiting Champaign County to the best of our abilities. As a taxpayer, voter, and resident of the county myself, along with my family and friends, I strive for a county that is safe and welcoming for everyone.

This past full year as your Sheriff has shown me the amazing things the Sheriff's Office is doing to help contribute to this safe and welcoming county along with some improvements that can be made. In the coming year I hope to expand on the foundation that was laid in 2019 – increased outreach to rural communities, increased community resources and alternatives to incarceration for those who pose no danger to our communities, and a facility that adequately allows us to meet the needs of our inmates, employees and operations.

In a world that appears torn between conflicting views and opinions, and where it can sometimes be difficult to listen beyond the “loudest voice,” I vow to always give you my honest, professional opinion on criminal justice topics that relate to the Sheriff's Office and our county, regardless of personal views, so an informed decision can be made on how to overcome the challenges we experience. After all, my staff and I work in this environment every day!

One of my main goals as Sheriff is transparency. It is my hope that this annual report helps me accomplish this goal by helping you become more familiar with my Office and the great things we are doing. I look forward to the challenges that lie ahead, as well as partnering with you to help combat community issues in order to continue to make Champaign County a safe and welcoming environment for all who experience it!

Sincerely,



Dustin D. Heuerman  
Champaign County Sheriff



# CONTENTS

Mission and Objectives _____	5
Mission _____	5
Law Enforcement Division Objectives _____	5
Corrections Division Objectives _____	5
Administrative Leadership Team _____	6
Patrol Division _____	7
Patrol Statistics _____	8
Civil Process _____	13
K-9 Patrol Deputies _____	14
Personnel Changes _____	15
Deputy of the Year _____	16
Investigations Division _____	17
Investigations Statistics _____	17
Crime Scene Investigations _____	17
School Resource Officers _____	18
Administrative Services Division _____	19
Corrections Division _____	20
Personnel Changes _____	21
Correctional Officer of the Year _____	22
Corrections Statistics _____	22
Electronic Home Detention (EHD) _____	33
Corrections Programs _____	34
Court Security Division _____	35
Personnel Changes _____	35
Emergency Management Agency _____	36
Community Engagement _____	37
Goals for the Future _____	38

# MISSION AND OBJECTIVES

## Mission

It is the mission of the Champaign County Sheriff's Office to provide a high level of professional and ethical service to all people living in and visiting Champaign County without bias or discrimination; to uphold the Constitutions of the United States and the State of Illinois; to exceed state, federal and industry standards; and to collaborate with community stakeholders to accomplish community initiatives and combat community-identified problems.



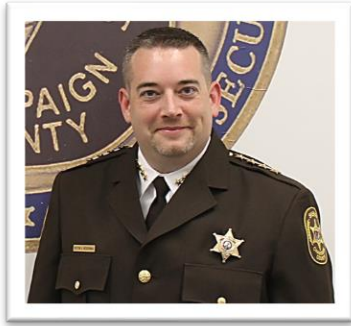
## Law Enforcement Division Objectives

- To serve all residents and visitors of Champaign County equally without bias or discrimination.
- To be as transparent as possible to the communities we serve.
- To use technology and data to provide the most efficient, effective and professional service possible.
- To collaborate with other local departments and community organizations to meet common goals.
- To hire and retain professional, ethical and diverse employees.

## Corrections Division Objectives

- Provide a safe & secure environment adequate for meeting inmate needs within the correctional center without bias or discrimination.
- Use technology to more efficiently and accurately process and evaluate inmates upon intake.
- Adequately address the needs of an increasingly “special population” of inmates.
- Collaborate with relevant stakeholders in pursuit of alternatives to incarceration for nonviolent offenders.
- Partner with community organizations to develop programs to help reduce recidivism upon release.
- To hire and retain professional, ethical and diverse employees.

# ADMINISTRATIVE LEADERSHIP TEAM



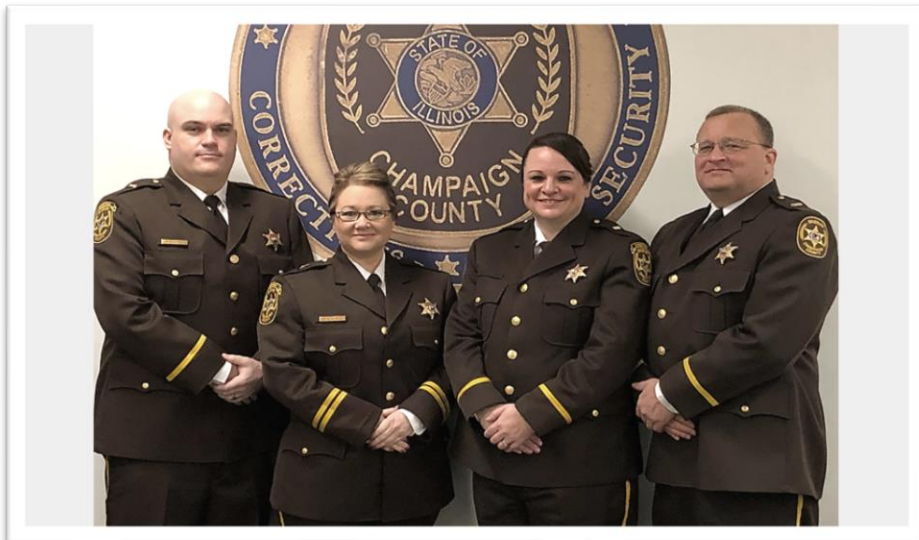
Dustin D. Heuerman  
Sheriff



Shannon Barrett  
Chief Deputy



Teresa Schlein  
Executive Assistant to  
the Sheriff



Corrections Leadership: Lt. Ryan Snyder, Captain Karee Voges, Lt. Jenna Good & Lt. Robert Cravens



Staci Sherrick  
Assistant to the Jail  
Superintendent

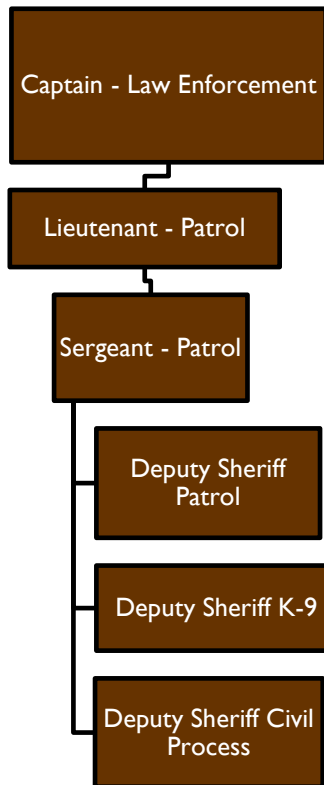


Law Enforcement Leadership: Lt. Tony Shaw, Captain Shane Cook, Lt. Curt Apperson & Lt. Dave Sherrick



Sarah Goodwin  
Records Supervisor

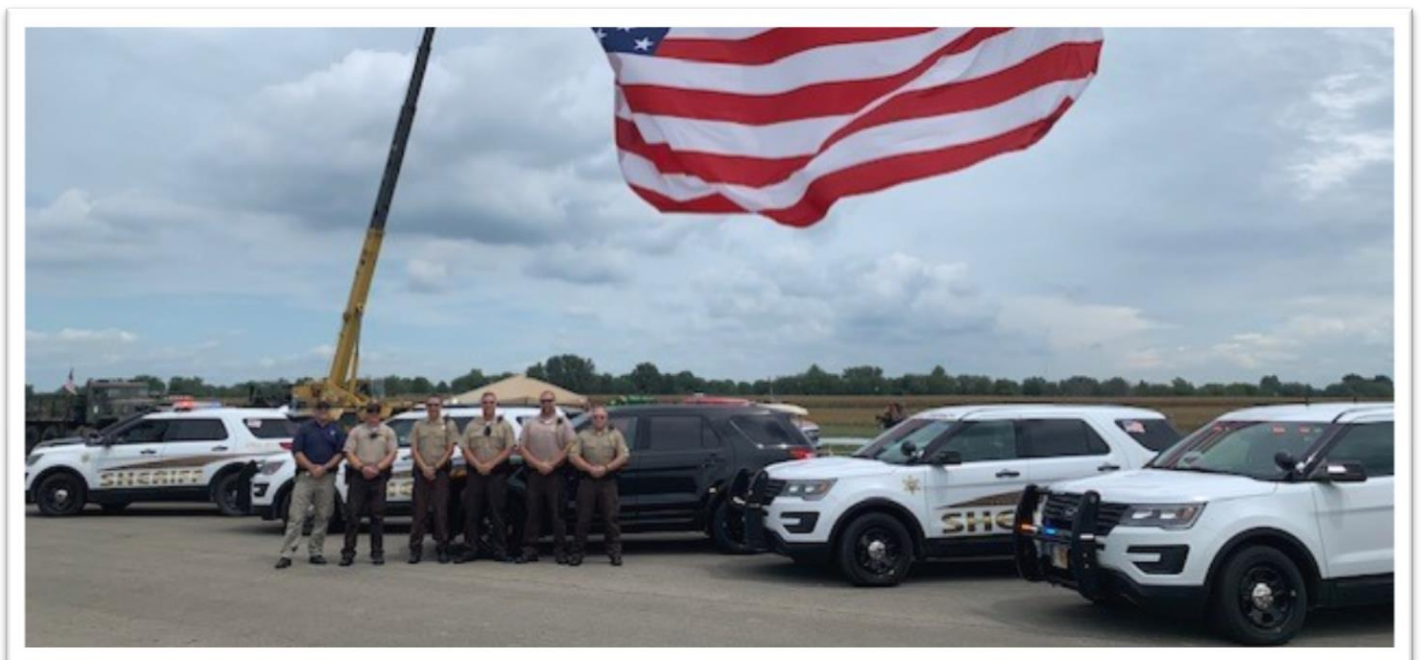
# PATROL DIVISION



Under the leadership of Lt. Tony Shaw, the Patrol Division is responsible for providing law enforcement services to Champaign County. We serve as the primary law enforcement agency for approximately 50,000 residents in unincorporated areas of the county. We also contract with several villages in Champaign County for patrol services.

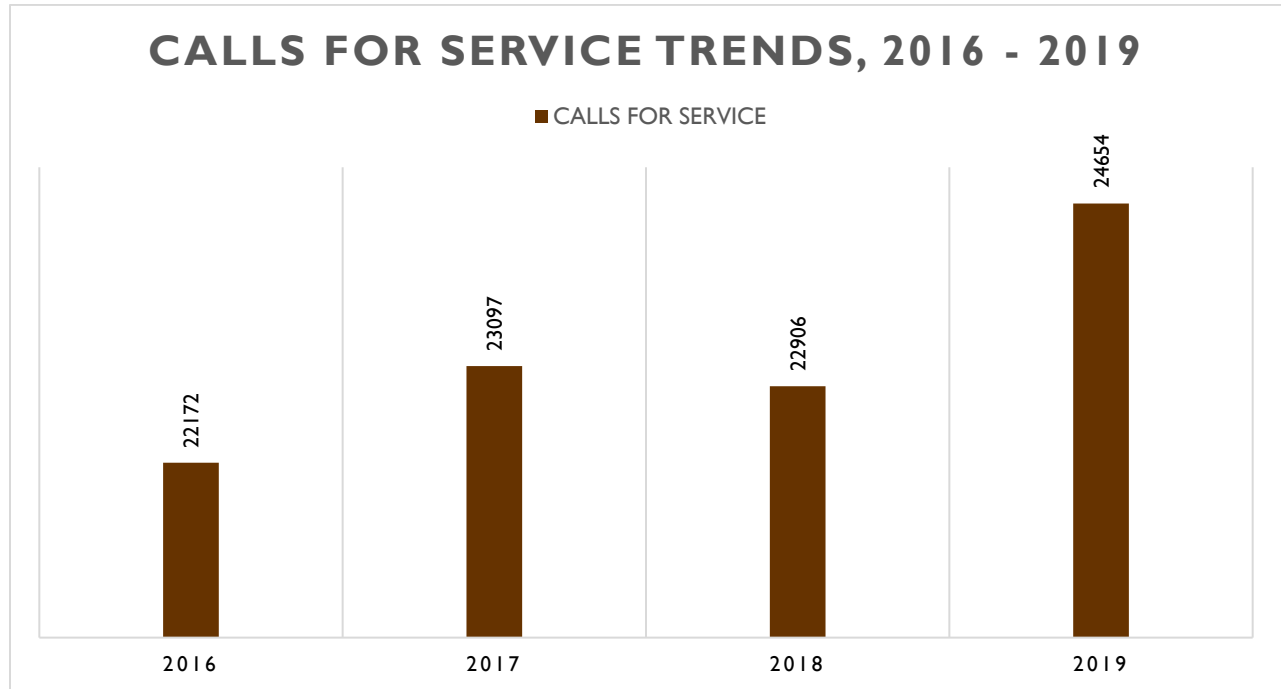
As deputy sheriffs have jurisdiction county-wide, we also provide assistance to other police departments in the county when requested. The Patrol Division is made up of four teams that work 12 hours each. There are 8 shift Sergeants (2 Sergeants on each shift) and 30 patrol deputies. Deputies respond to emergency and nonemergency calls for service in their assigned beats, conduct proactive activities like foot patrol and traffic

stops, and are frequently engaged in community-based activities and events. The Patrol Division is also responsible for civil process service and K-9 deputies.



## Patrol Statistics

As one can see with the following graphs, the Sheriff's Office saw an increase in both calls for service and arrests in 2019.

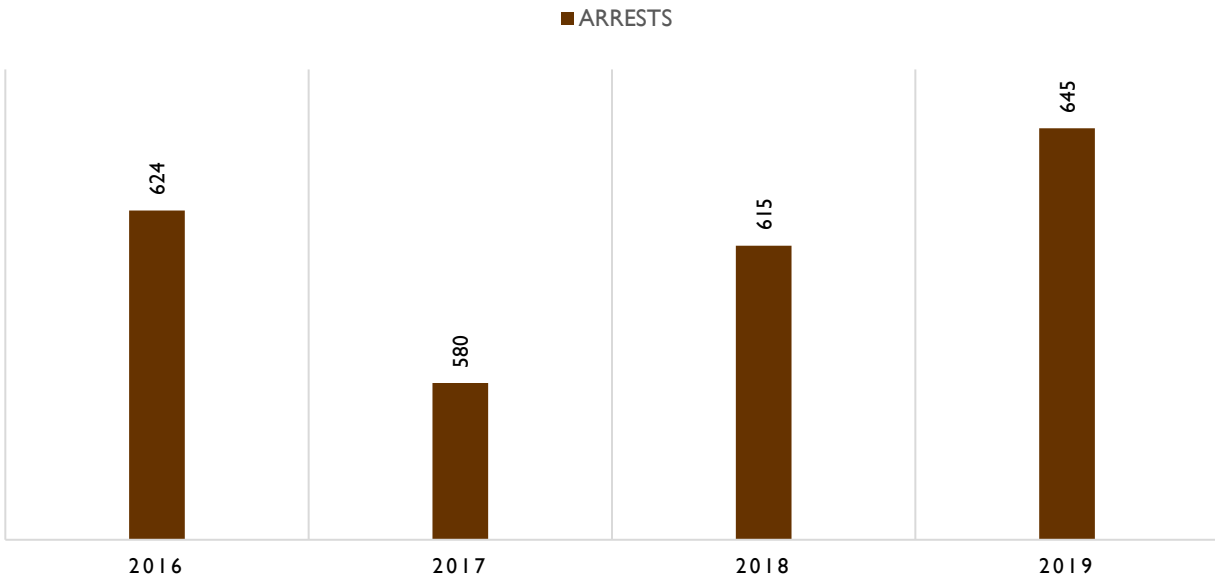


Of the 645 arrests (not including Notice to Appear or traffic citations), the following reasons topped the list:

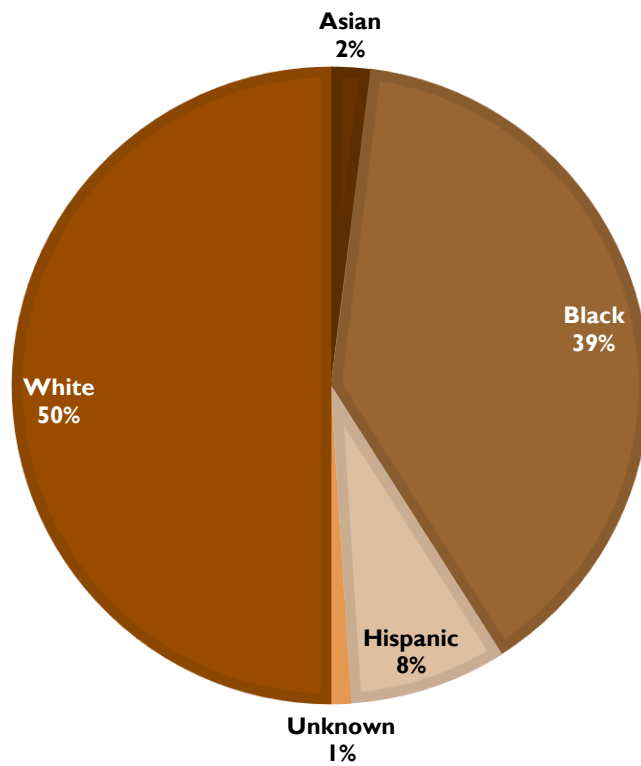
- Arrest on Out of County Warrant (35%)
- Domestic Battery/Aggravated Domestic Battery (16%)
- Driving Under the Influence of Alcohol (12%)
- Driving while License Revoked or Suspended (8%)



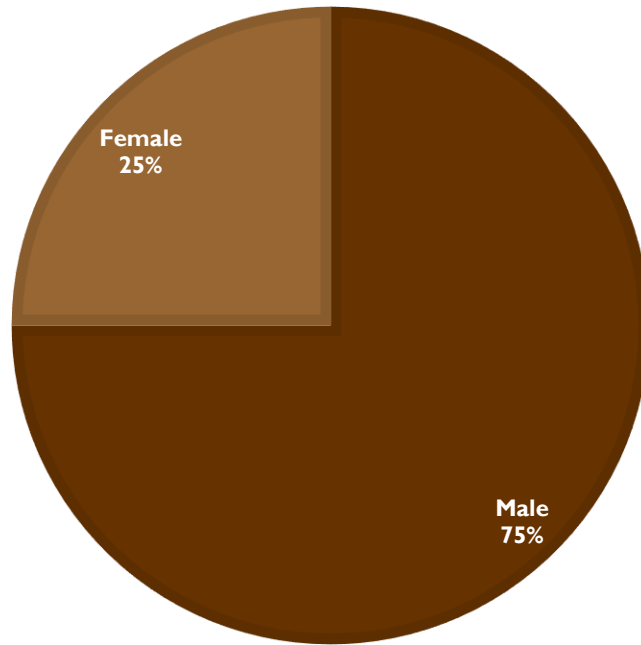
### CCSO ARREST TRENDS, 2016 - 2019



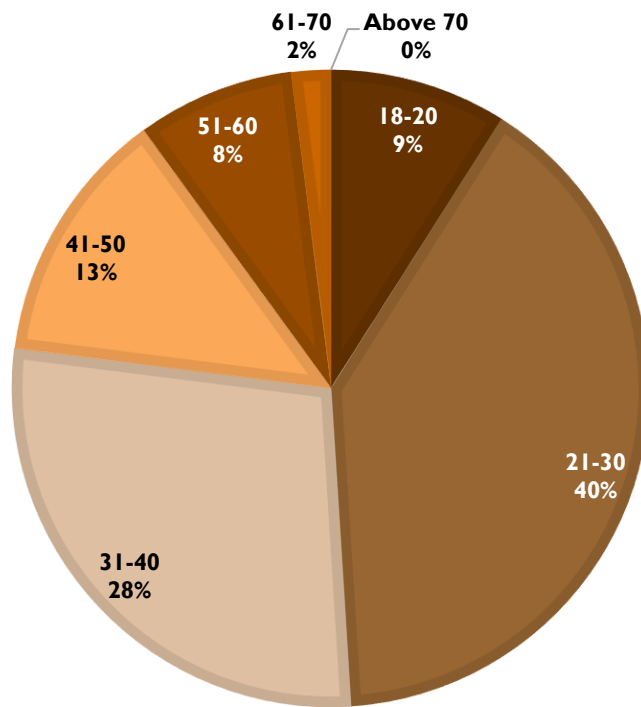
### CCSO ARRESTS BY RACE, 2019



### CCSO ARRESTS BY GENDER, 2019

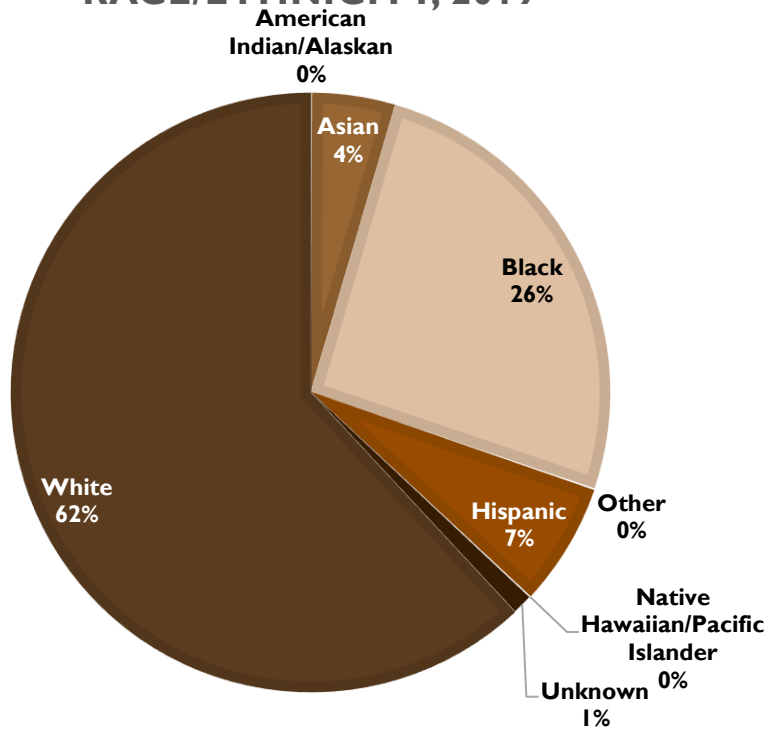


### CCSO ARRESTS BY AGE, 2019

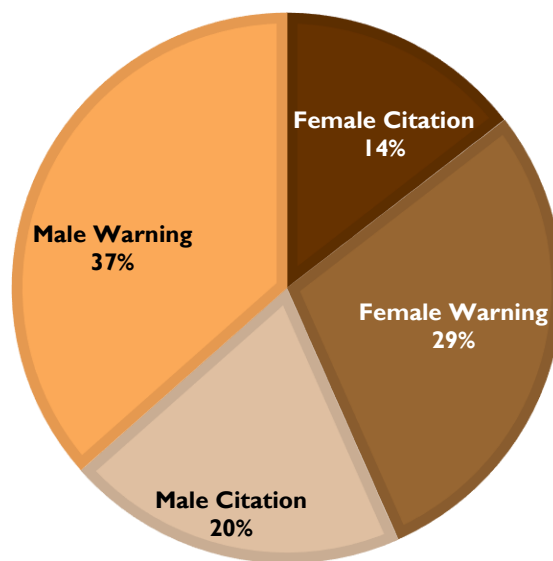


Sheriff's deputies also issued 1,883 traffic citations and 3,511 traffic warnings in 2019.

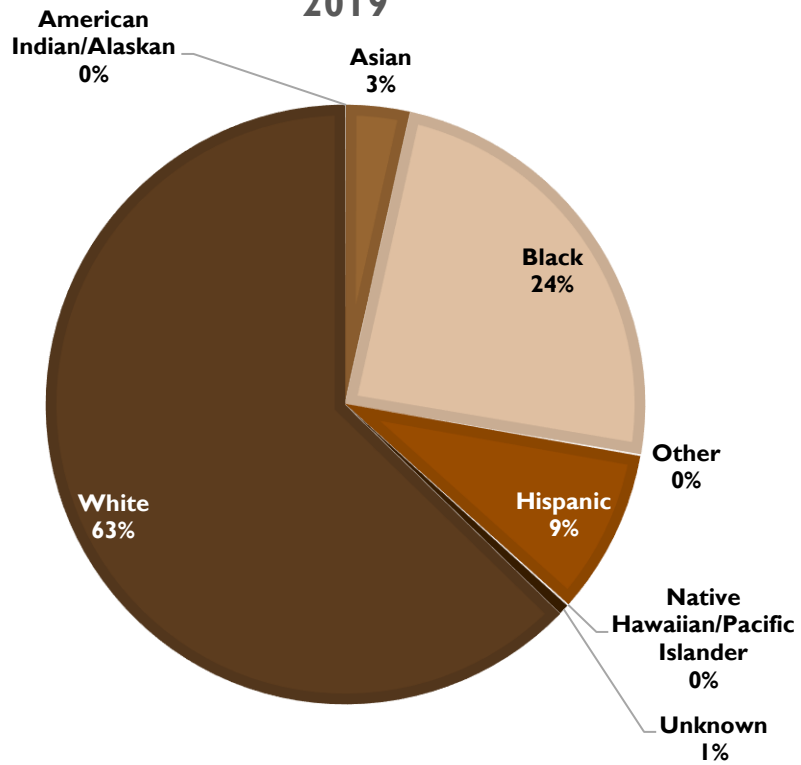
### TOTAL TRAFFIC CITATIONS & WARNINGS BY RACE/ETHNICITY, 2019



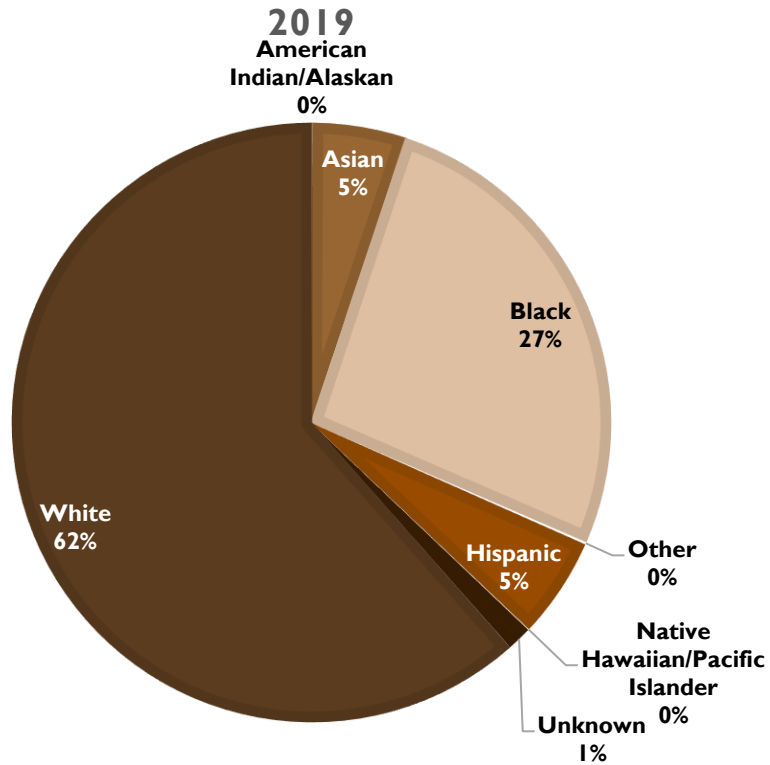
### TRAFFIC CITATIONS & WARNINGS BY GENDER, 2019



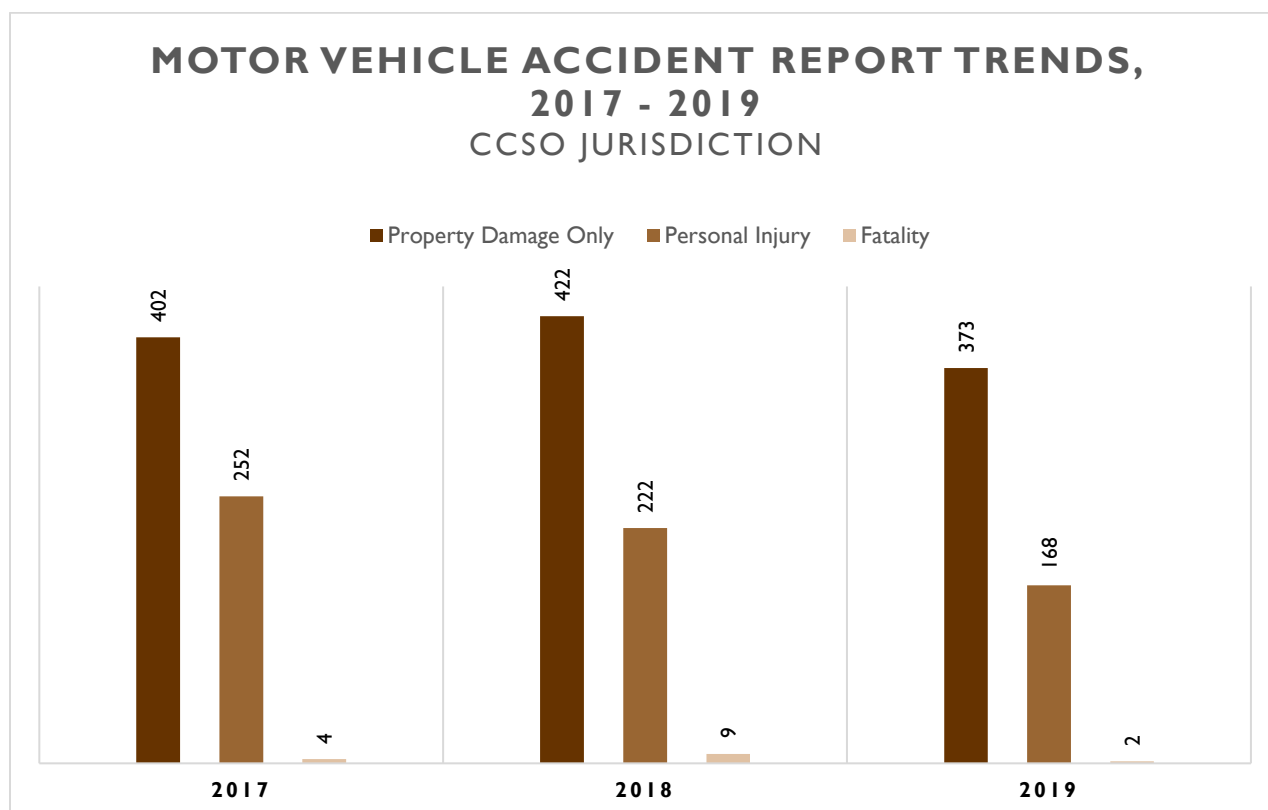
### TOTAL TRAFFIC CITATIONS BY RACE/ETHNICITY, 2019



### TOTAL TRAFFIC WARNINGS BY RACE/ETHNICITY, 2019



In 2019, Sheriff's deputies responded to 543 motor vehicle accidents on roadways within the county where CCSO is the primary law enforcement agency. Accidents on State routes, U.S. routes and Interstates are routinely handled by the Illinois State Police, therefore would not be counted in this number even if CCSO assisted with the accident. CCSO also does not generally investigate motor vehicle accidents that occur within the city limits of Champaign, Urbana, Mahomet or Rantoul unless extenuating circumstances exist.



## Civil Process

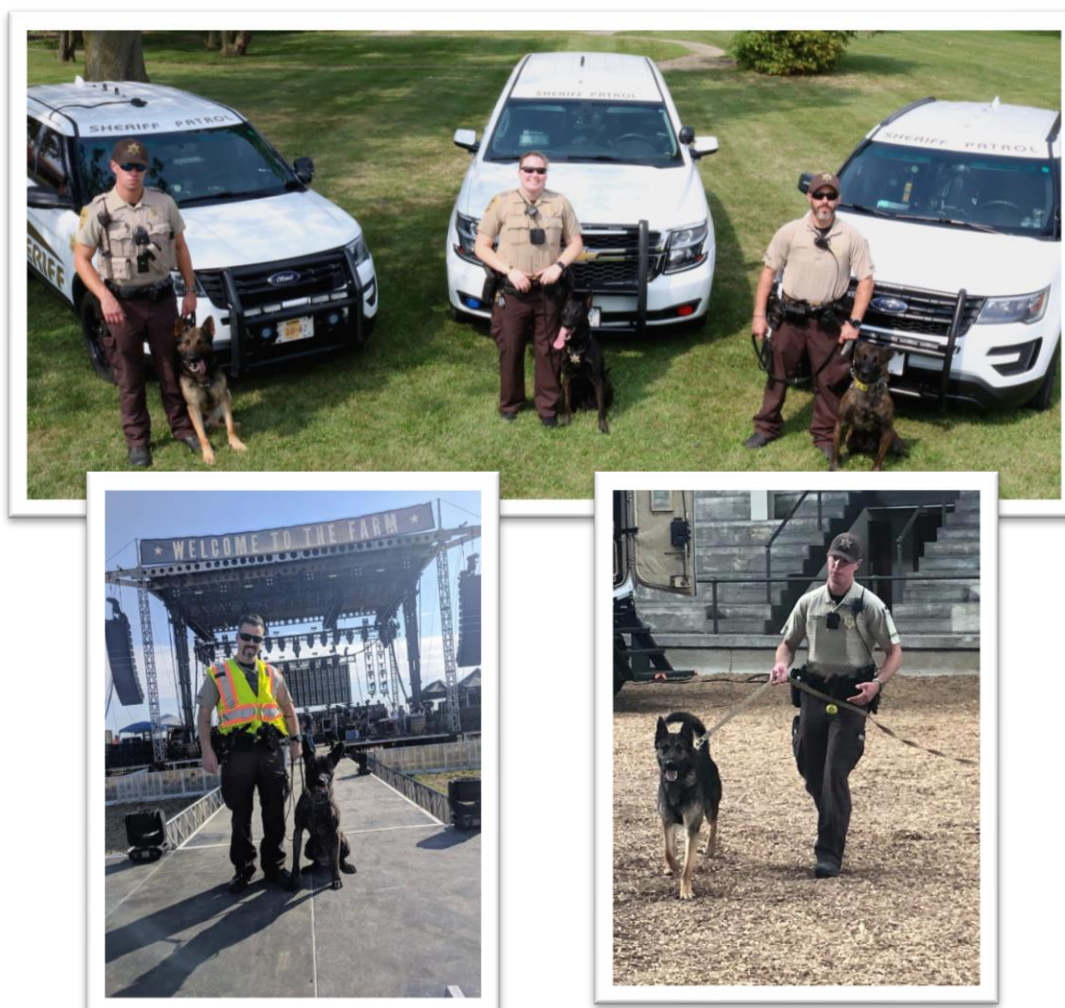
One unique function of the Sheriff's Office is civil paper service. The Sheriff's Office has two full-time Civil Process Servers, who are also sworn deputies, responsible for serving all civil papers in Champaign County. These might include orders of protection, eviction notices or summons to appear in court.

In 2019, deputies served 7,756 civil papers in Champaign County.

## K-9 Patrol Deputies

The patrol division has three K-9 deputies. These canine assets are routinely used for locating illicit contraband and tracking for missing persons. There is one K-9 on day shift and one K-9 on each of the night shifts.

In 2019, the Sheriff's Office K-9 team used the K-9s 156 times for various tasks such as detecting controlled substances, searching for missing people, tracking suspects who had fled a crime scene and searching for firearms that had been discarded. As a result, 39 arrests were made, 1.5 kilograms of marijuana were seized, 80 grams of cocaine were seized, 106 grams of methamphetamine were seized, 2 grams of heroin were seized, and two discarded handguns were located.



## Personnel Changes

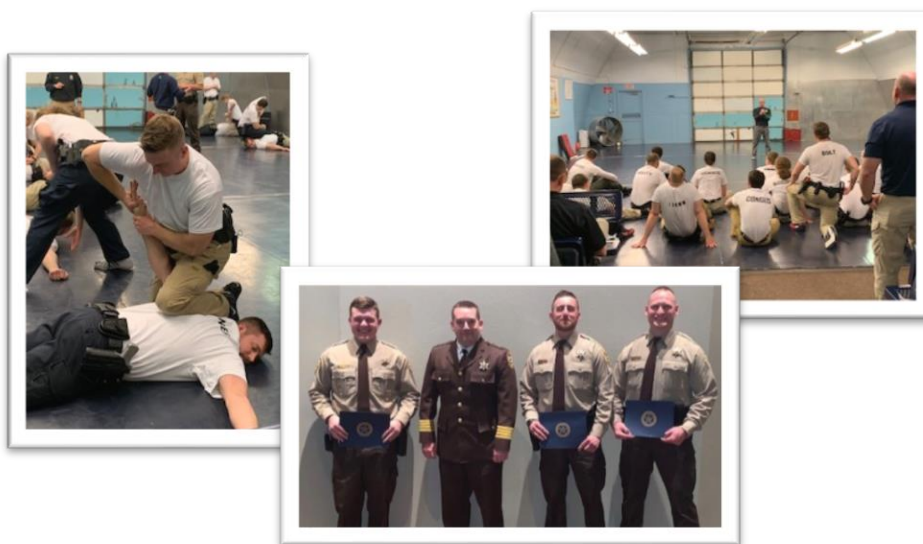
In 2019 CCSO had several personnel changes. Congratulations to Deputy Tracy Wagner, Sgt. Will Davis and Lt. Brian Mennenga for entering retirement!



Sheriff Heuerman also had an opportunity to promote Deputy Mark McCallister, Deputy Seth Herrig and Deputy Ed Moody to Patrol Sergeant and Sergeant Dave Sherrick to Lieutenant.



Sheriff Heuerman also swore-in several new patrol deputies in 2019: two lateral deputies with experience at other agencies and six deputies who are getting their start at CCSO. Once hired, deputies go through a rigorous field training process that lasts for months. New deputies are also required to attend a 14-week, certified police academy before starting their field training. A variety of topics are covered, including Illinois law, community policing, combating implicit bias, effective communication/de-escalation techniques and control tactics, among others. It takes approximately eight months and \$40,000 to get a new deputy ready for solo patrol.



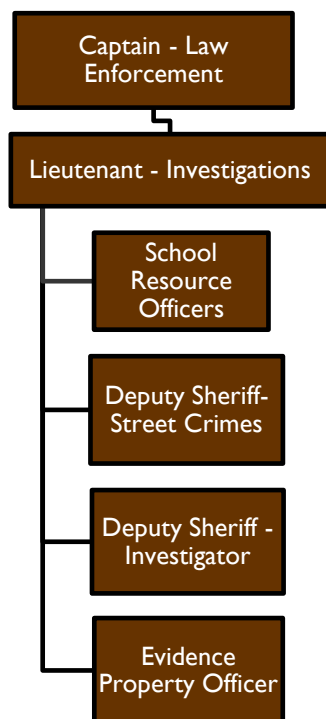
## Deputy of the Year

Investigator Dwayne Roelfs was the Sheriff's Office's Deputy of the Year. In addition to the great investigative work Investigator Roelfs does every day, he was selected for this award due to solving a "cold-case" murder that occurred in the county in 2009.





# INVESTIGATIONS DIVISION



Under the leadership of Lt. Curt Apperson, the Investigations Division is responsible for the investigation of a variety of crimes that occur in areas of the county where the Sheriff's Office serves as the primary police agency. They also provide support to other local departments upon request. The Investigations Division has five full time Investigators and an Evidence Property Officer.

In addition to criminal investigators, the Sheriff's Office also has a deputy assigned to the Street Crimes Task Force, which is a multijurisdictional task force with Urbana Police Department, Champaign Police Department and University of Illinois Police Department. One of the major priorities of this task force is to work toward reducing violent crime in Champaign County.

## Investigations Statistics

In 2019 our Investigations Division investigated approximately 207 crimes of a wide variety, including property crimes, crimes against persons, financial crimes, and "cold case" missing persons and homicides.

## Crime Scene Investigations

Five deputies from the Investigations and Patrol Divisions also have specialized training as Crime Scene Investigators and are utilized to collect evidence from crime scenes when needed.



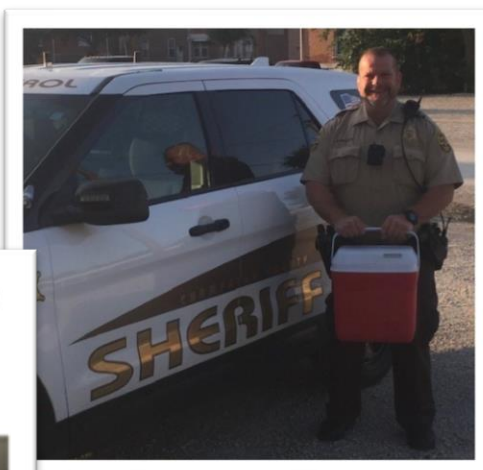
## School Resource Officers

The Sheriff's Office has two School Resource Officers (SRO). The role of a SRO is to not only be present in schools in case of an incident, but more importantly to create a mentoring relationship with students through day-to-day contact. Deputy Franzen has served the Unity school district for years while Deputy Hallett, who serves the St. Joseph & Prairieview-Ogden school districts, transitioned into this role in mid-2019. These SROs also coordinate with the school districts to help prepare plans in the case of an emergency. Both Deputy Franzen and Deputy Hallett are active in the school districts both on and off duty.

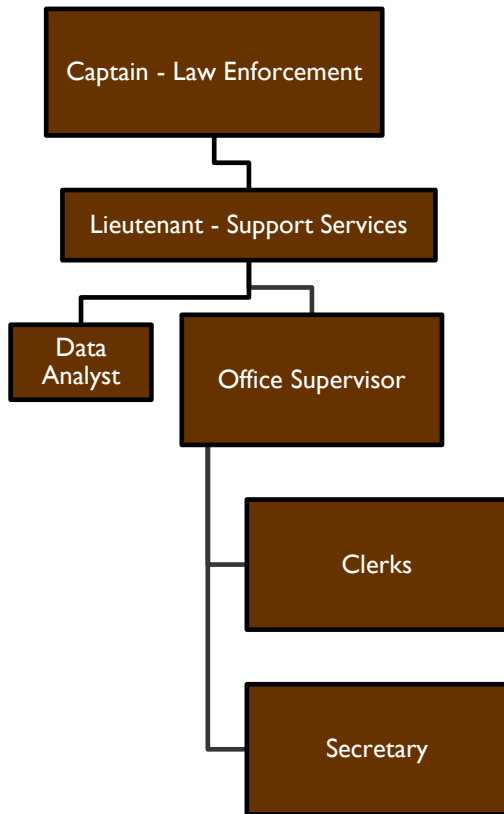


### SJ-O Shop and Go helps to meet unspoken needs

dani · December 11, 2019 · 4 minutes read



# ADMINISTRATIVE SERVICES DIVISION



Under the leadership of Lt. Dave Sherrick and Office Supervisor Sarah Goodwin, the Administrative Services Division is likely the first point of contact someone will have when coming to the Sheriff's Office. In addition to this vital customer service role, the Division enters, processes and maintains Sheriff's Office records including warrants, traffic citations, orders of protection and other civil papers. The Administrative Services team works diligently to ensure accurate records are processed in a timely fashion.

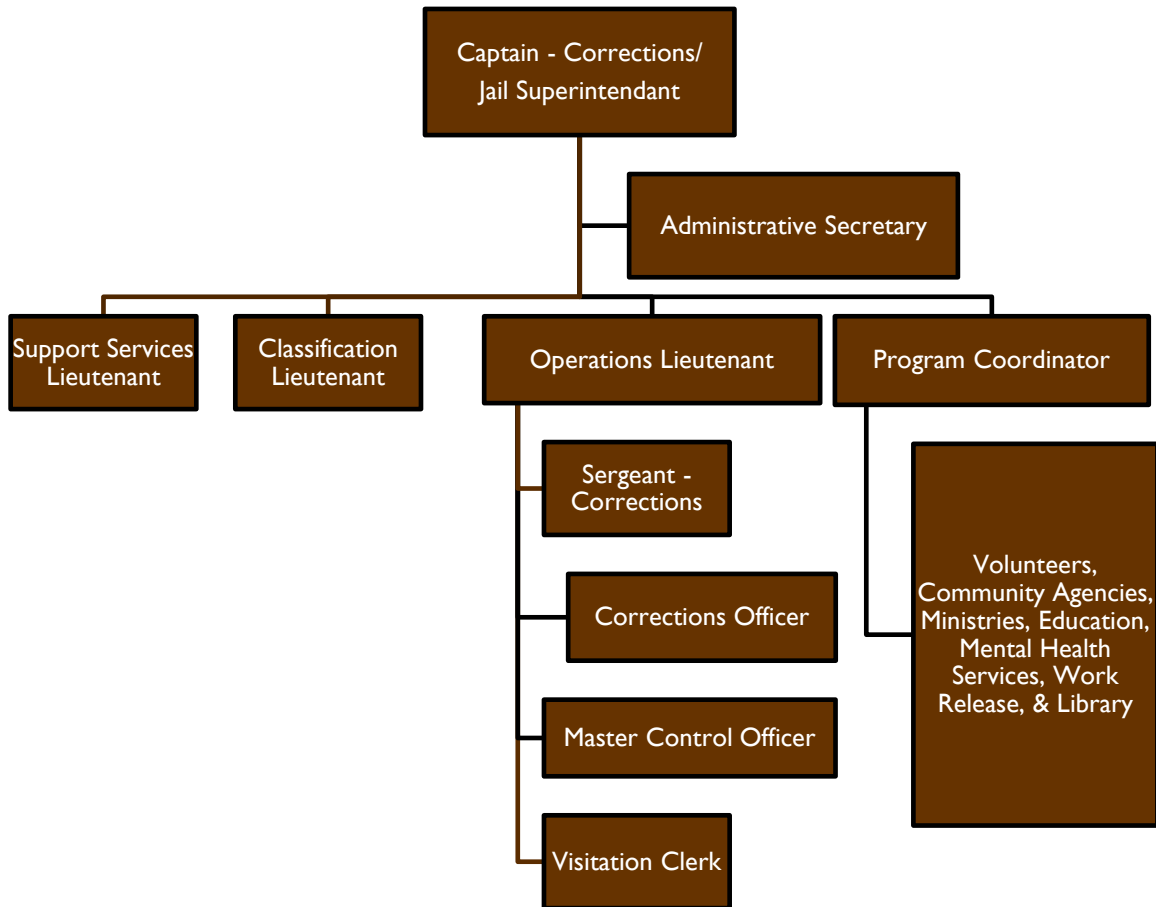
In 2019, Sheriff Heuerman added a data analyst position to the Administrative Services Division in order to better collect and analyze crime statistics

and other data. This data will be used to help show the Sheriff and his office how to best utilize their resources and evaluate whether additional resources are needed to help address community issues and trends.

In 2019, the Administrative Services Division processed 7,756 civil papers, 2,603 warrants and 5,394 traffic citations and warnings, among various other tasks.



# CORRECTIONS DIVISION



Under the leadership of the Jail Superintendent, Captain Karee Voges, Champaign County has two facilities for inmates – the Downtown jail and the Satellite jail. All those arrested in Champaign County on state charges come to the Champaign County Jail. Over the past few years, the jail has seen an increase in mental health and medical needs of inmates, which it is required by law to address. While the Sheriff's office does not have a say in who is arrested by other departments or who is remanded to custody by a Judge, we are required to adequately address inmate needs while in custody as well as provide a safe and secure environment for both inmates and correctional staff.



Two of the biggest issues affecting the Champaign County Jail, and jails across the nation, are mental health and classification issues. As such, an initiative has been underway to not only provide a facility that can adequately address the mental health and medical needs of inmates in custody, but also work to build community alternatives to divert people from jail who do not pose a safety risk and might be better served with community alternatives to incarceration. Regarding classification, some inmates cannot be around others – female inmates, inmates with mental health issues, and rival gang members are some examples. This has caused strain on jail resources to adequately meet classification standards while maintaining a safe facility for inmates and correctional staff.



## Personnel Changes

In 2019, Corrections had several personnel changes. Congratulations to CO Glass, CO Umbarger, and our programs coordinator, Nancy Griffin, for entering retirement!



Sheriff Heuerman swore in seven new Correctional Officers. Once hired, these officers attend a five-week corrections academy and undergo months of field training at the jails before released on their own.

Sheriff Heuerman also hired six full-time or part-time Control Operators. These “Controllers” operate the doors at the jails and help ensure safety for the Correctional Officers.

## Correctional Officer of the Year

More is asked of our Correctional Officers today than ever before. Not only are correctional officers charged with supervising inmates who are in the jails, but they are also responsible for the physical and mental wellbeing of inmates. Correctional Officers today have to be not only physically capable of doing the job, but also mentally capable. Characteristics of an effective Correctional Officer include excellent communication and reasoning skills, as well as the ability to remain professional and unbiased regardless of the inmate or the inmate's behavior.

Correctional Officer Rikki McComas was the Sheriff's Office's Correctional Officer of the Year and displays all of these qualities on a daily basis.



## Corrections Statistics

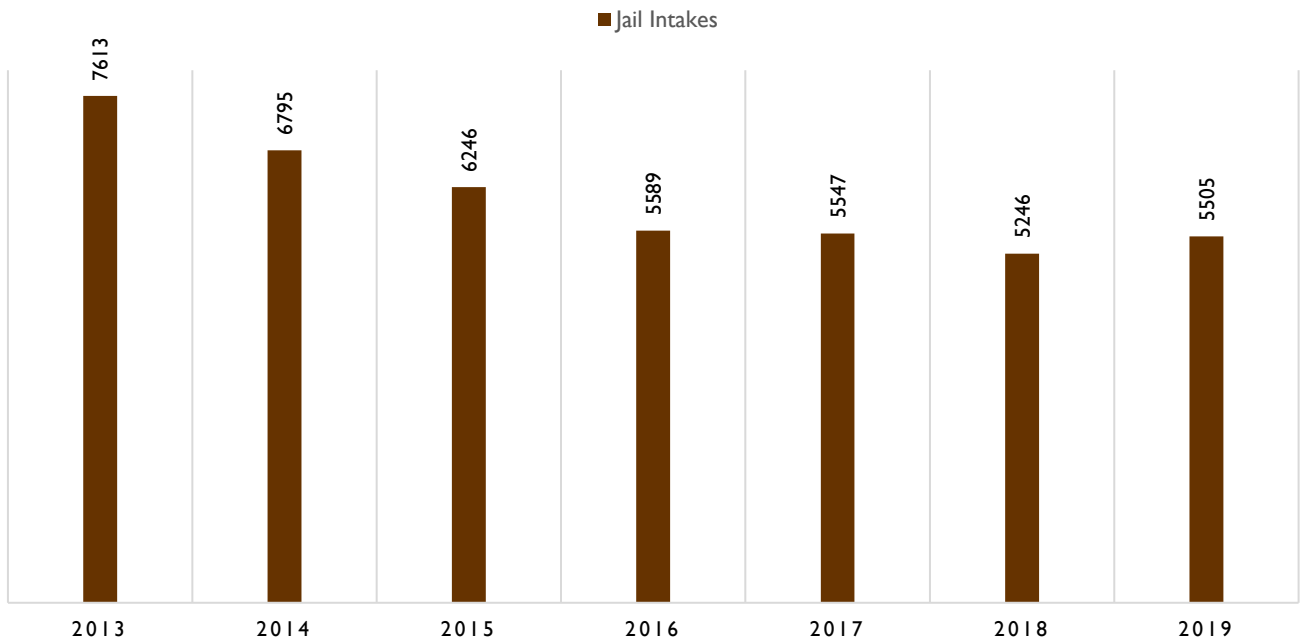
Many of the arrestees who are brought to the jail either bond out immediately or shortly after arraignment when their bond is set. On average in 2019, there were 15 intakes per day and 14 releases per day. There was a total of 5505 arrestees brought to the Champaign County Jail in 2019.

These arrestees represented 226 different charges. The top five charges in 2019 were:

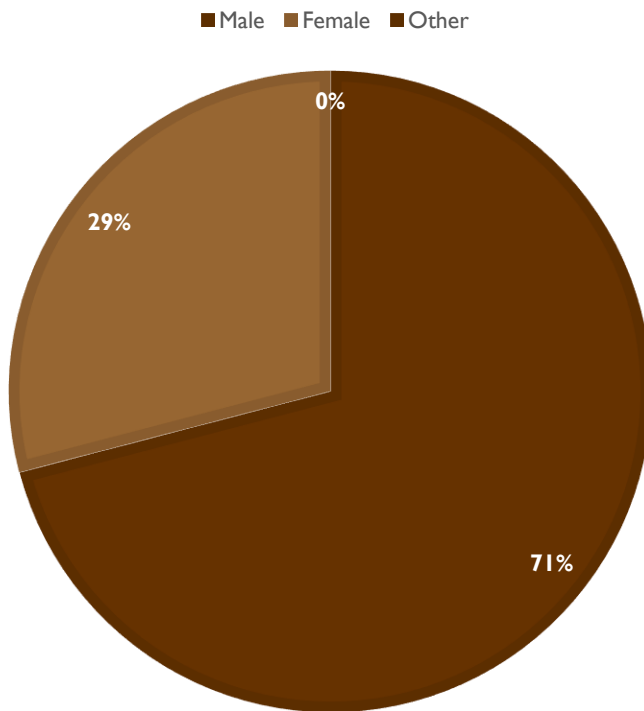
- Driving with a Suspended or Revoked Driver's License (11.77%)
- Domestic Battery (8.09%)
- Out of County Warrant (5.65%)
- Driving Under the Influence of Alcohol (4.75%)
- Retail Theft (3.67%)

In many cases arrestees were charged with multiple offenses per arrest.

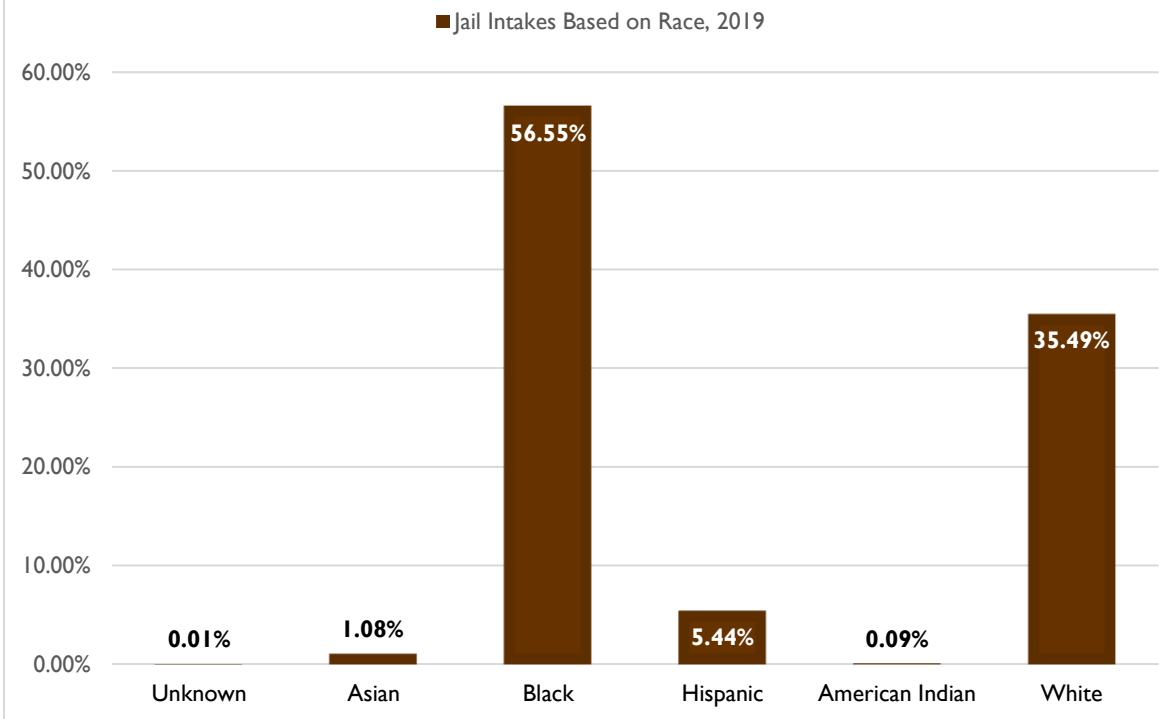
### ANNUAL JAIL INTAKE TRENDS, 2013 - 2019



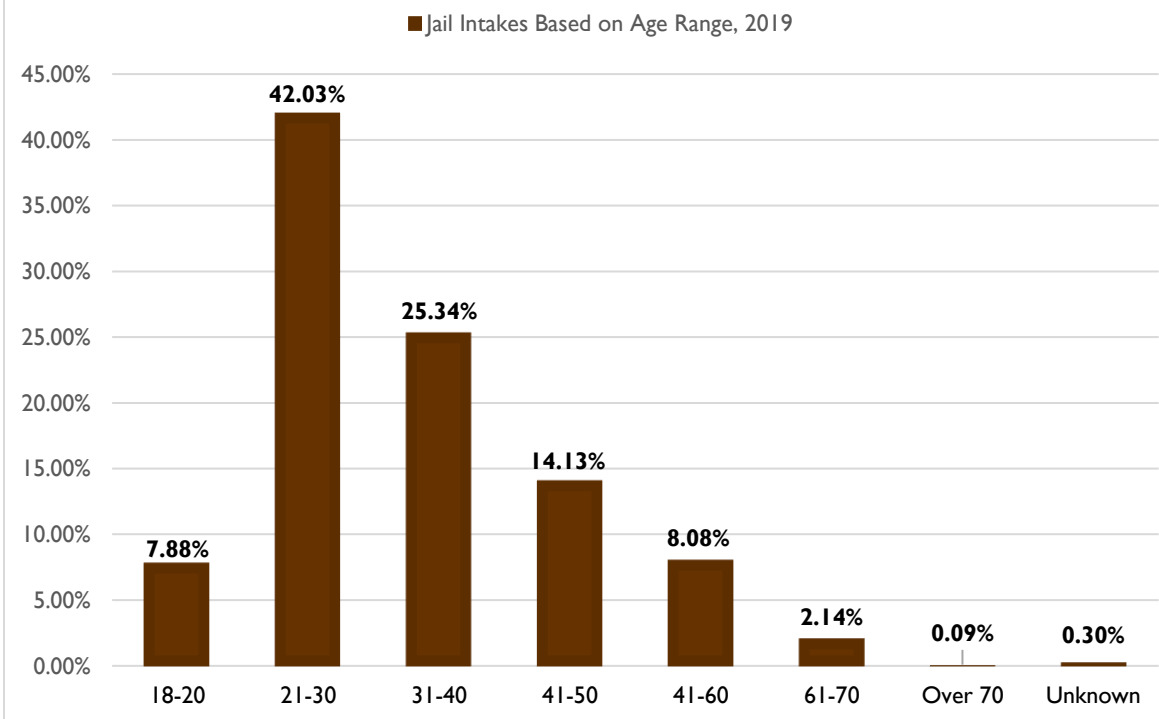
### JAIL INTAKES BASED ON GENDER, 2019



### JAIL INTAKES BASED ON RACE, 2019



### JAIL INTAKES BASED ON AGE RANGE, 2019

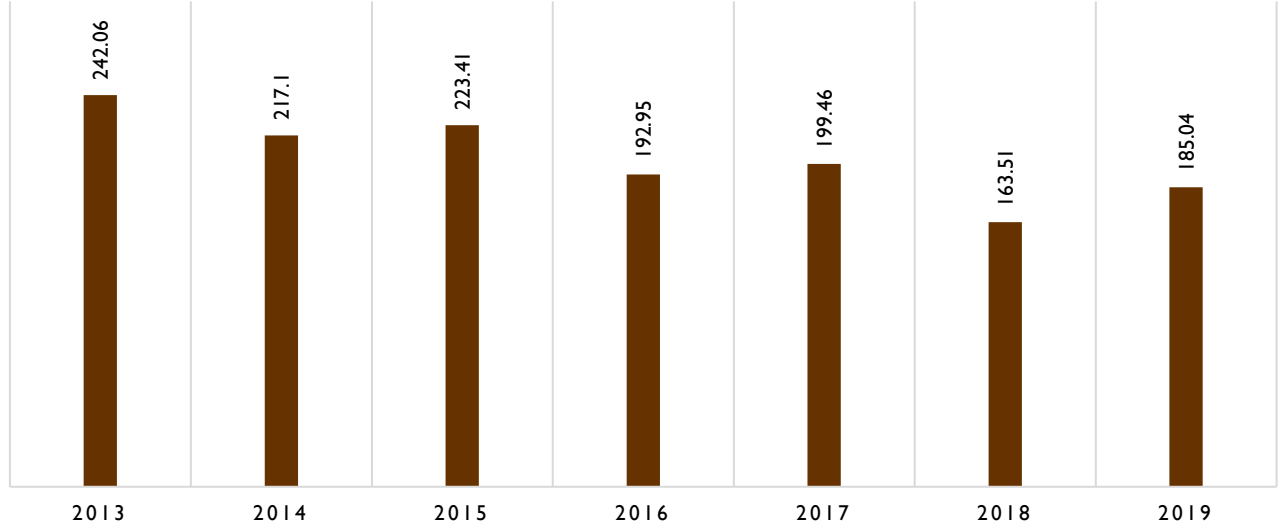




### AVERAGE DAILY POPULATION JAIL TRENDS, 2013 - 2019

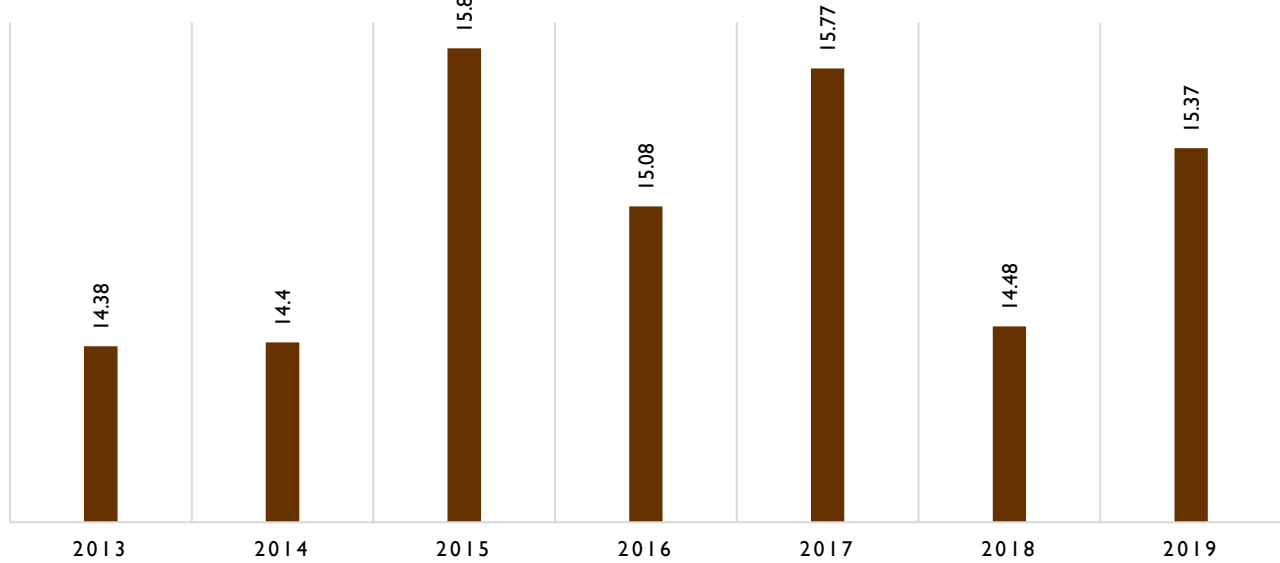
(DOES NOT INCLUDE ELECTRONIC HOME DETENTION)

■ Average Daily Population

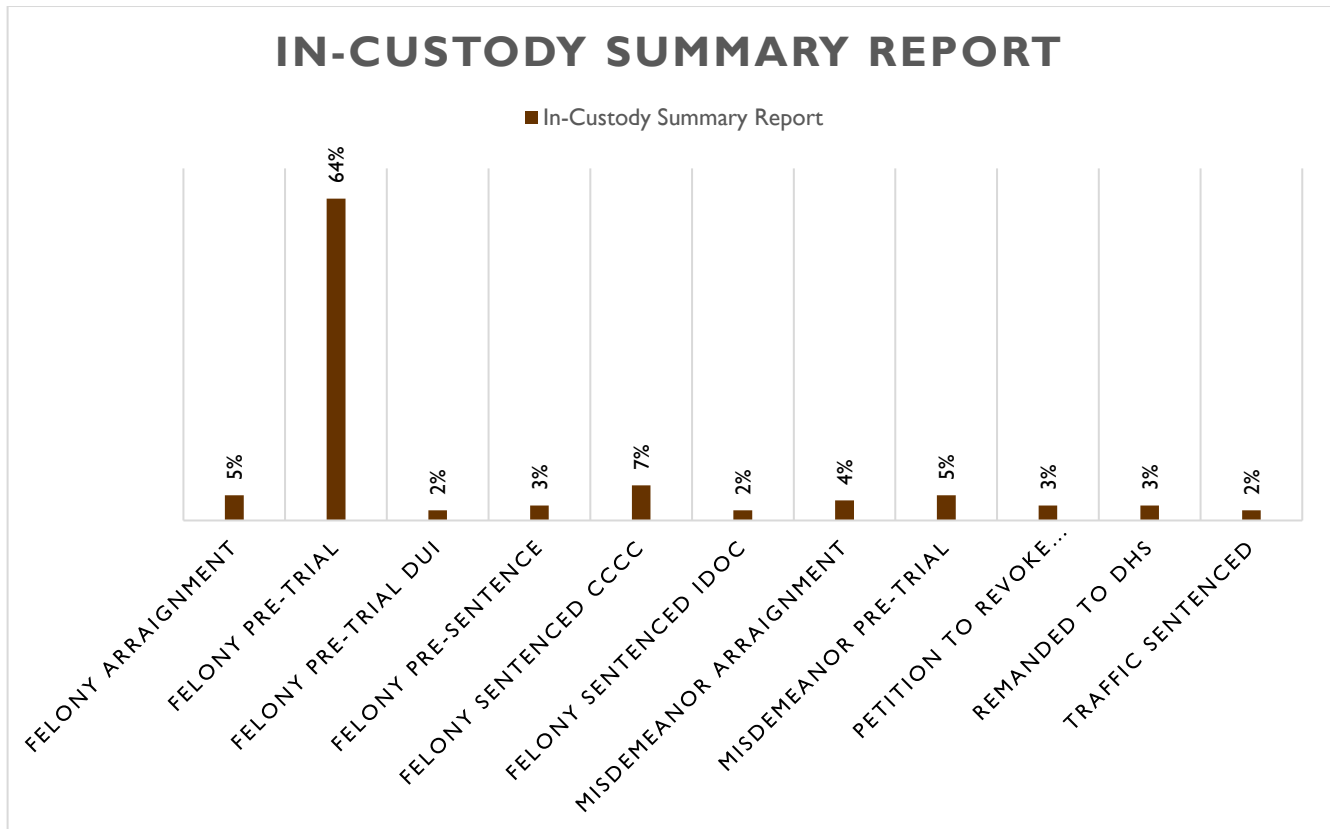


### AVERAGE # OF DAYS IN CUSTODY TRENDS, 2013 - 2019

■ Average # of Days in Custody



Below is a yearly average of the “status” of an inmate at the Champaign County Jail in 2019.



<b>Felony Arraignment –</b>	Arrested for an offense punishable by a year or more in prison, but not yet arraigned
<b>Felony Pre-Trial –</b>	Arraigned by Judge and bond set (or remanded into custody); has not yet posted bond to get released
<b>Felony Pre-Trial DUI –</b>	Same as “felony pre-trial” but DUI related
<b>Felony Pre-Sentence –</b>	Found guilty of a felony offense and awaiting sentencing
<b>Felony Sentenced CCCC –</b>	Serving sentence for a felony conviction in Champaign County Jail
<b>Felony Sentenced IDOC –</b>	Waiting to be transported to Dept. of Corrections to serve sentence
<b>Misdemeanor Arraignment –</b>	Arrested for an offense punishable by up to 364 days in jail, but not yet arraigned
<b>Misdemeanor Pre-Trial –</b>	Arraigned by Judge and bond set (or remanded into custody); has not yet posted bond to get released
<b>Petition to Revoke –</b>	In the process of having probation revoked
<b>Remanded to DHS –</b>	Found unfit to stand trial and is waiting on open bed at Department of Human Services
<b>Traffic Sentenced –</b>	Serving sentence for a traffic conviction in Champaign County Jail

It can be very difficult to get the “whole picture” of inmates that come to the Champaign County Jail. As such, here is a “snapshot” of inmates in-custody on October 25, 2019. This date has no significance other than it is when the data was recorded, and provides a good, general overview of the average jail population. You might find the below key helpful when looking at the data.

**Fel** = Felony Offense

**Mis** = Misdemeanor Offense

**Traf** = Traffic Offense

**Civ** = Civil Warrant for Child Support Delinquency

**Remand DHS** = Found unfit to stand trial and is waiting to be accepted by the Department of Human Services

**New Charge** = just arrested and bond has not yet been set by Judge

**No Bond** = cannot be released on bond

**10%** = must post 10% of listed bond to be released

**FC** = must post full amount of bond

**Sentenced** = Serving a sentence in jail for a conviction in Champaign County

**Days in Jail** = Length of time in jail on October 25, 2019 when the report was generated

AGE	SEX	RACE	TYPE	CHARGES	BOND	
41	M	B	Fel Fel	Aggravated Assault/Unlawful Use of Weapon/Battery/Crim Tres to Prop Probation Violation-Criminal Trespass	\$15,000.00 \$20,000.00	10% 10%
63	M	W	Fel Fel	Aggravated Battery to Peace Officer/Aggravated Battery-Strangle Aggravated Unlawful Use of Weapon/Possession of Firearm with revoked FOID	\$30,000.00 \$50,000.00	10% 10%
45	F	W	Fel Mis Mis	Aggravated Battery to Senior Citizen Domestic Battery Criminal Damage to Property	New Charge	---
22	M	B	Fel	Battery with a Firearm	\$750,000.00	10%
22	M	B	Fel ---	Aggravated Battery w Firearm/Agg Discharge Firearm/Unlawful Poss Weapon Parole Hold	\$500,000.00 No Bond	10% ---
27	M	B	Fel	Aggravated Battery with Deadly Weapon	\$50,000.00	10%
24	M	B	Fel	Aggravated Battery /Domestic Battery	\$25,000.00	10%
43	M	B	Fel	Aggravated Battery/Fail to Register	\$50,000.00	10%
53	M	B	Fel	Aggravated Battery w/ Firearm/Unlawful Possession Weapon by Felon	\$750,000.00	10%
50	M	B	Fel	Aggravated Discharge Firearm/Poss Stolen Firearm/Aggravated Assault	\$750,000.00	10%
27	M	B	Fel ---	Aggravated Discharge/Poss Stolen Firearm/Unlawful Use of Weapon Parole Hold	\$225,000.00 No Bond	10% ---
24	M	H	Fel	Aggravated Discharge/UUW/Poss Stole FA/Agg DomBatt/Aggravated Assault	\$500,000.00	10%
36	M	B	Fel	Aggravated Domestic Battery	No Bond	---

30	M	W	Fel Fel	Aggravated Domestic Battery Use Forged CC/Theft - McLean Co Warrant	\$50,000.00 \$10,000.00	10% 10%
24	M	B	Fel	Aggravated Domestic Battery-Strangle	\$25,000.00	10%
32	M	B	Fel	Aggravated Domestic Battery/Agg Batt/Dom Batt/DUR/Reck Driv/Flee Elude	\$150,000.00	10%
23	M	B	Fel	Aggravated Domestic Battery/Domestic Battery	\$50,000.00	10%
36	M	B	Fel	Aggravated Domestic Battery/Domestic Battery	\$50,000.00	10%
55	M	B	Fel	Aggravated DUI	\$200,000.00	10%
30	M	B	Fel	Aggravated DUI	Sentenced	---
24	M	B	Fel	Aggravated DUI-No Valid DL	\$25,000.00	10%
33	M	W	Fel Fel Fel	Aggravated DUI/Aggravated Fleeing & Eluding/Resist PO Aggravated DUI Driving on Revoked License	\$250,000.00 \$50,000.00 \$50,000.00	10% 10% 10%
30	M	W	Fel	Aggravated DUI/Driving on Revoked License	\$10,000.00	10%
24	M	B	Fel Fel ---	Aggravated Fleeing & Eluding/Possession of Drug Paraphernalia Possession of a Stolen Firearm Parole Hold	\$25,000.00 \$100,000.00 No Bond	10% 10% ---
40	M	W	Fel Mis Fel	Aggravated Intimidation Driving on Suspended License/Poss Drug Para/Possession of Cannabis Contempt - Douglas Co Warrant	New Charge New Charge \$1,500.00	--- --- 10%
22	M	B	Fel	Aggravated Unlawful Use of Weapon	Sentenced	---
43	M	W	Mis	Aggravated Assault	\$5,000.00	10%
25	F	B	Mis Mis	Aggravated Assault Battery	\$2,000.00 \$1,500.00	10% 10%
38	M	B	Mis	Aggravated Assault/Crim Trespass	\$5,000.00	10%
57	M	B	Mis	Aggravated Assault/Crim Trespass	Remand DHS	---
31	F	W	Fel	Aggravated Batt to Peace Officer	Remand DHS	---
54	M	B	Fel Fel	Aggravated Batt to Transit Employee Robbery	\$3,000.00 \$75,000.00	10% 10%
21	M	B	Fel	Aggravated Battery with a Firearm	\$500,000.00	10%
45	M	B	Fel	Aggravated Battery	\$5,000.00	10%
35	F	W	Fel	Aggravated Battery	Remand DHS	---
46	M	W	Fel	Aggravated Battery	Remand DHS	---
24	M	B	Fel Fel Fel ---	Aggravated Battery Armed Robbery/Aggravated Robbery Aggravated Battery in a Public Place Parole Hold	\$100,000.00 \$250,000.00 \$10,000.00 No Bond	10% 10% 10% --
40	F	W	Fel Fel	Aggravated Battery - Held for residential treatment Retail Theft - Held for residential treatment	Sentenced	---
51	M	B	Fel	Aggravated Battery Police Officer/Resist PO/Driving on Revoked License	\$75,000.00	10%
20	M	W	Fel	Aggravated Battery to Police Officer	Sentenced	---
26	M	B	Fel	Aggravated Battery w Firearm/Unlawful Use of Weapon	\$500,000.00	10%
20	M	B	Fel	Aggravated Battery with a Firearm	\$500,000.00	10%

61	M	W	Fel Fel	Aggravated Criminal Sexual Abuse Stalking	\$200,000.00 \$25,000.00	10% 10%
25	M	W	Fel Mis Fel Mis	Aggravated Criminal Sexual Abuse Aggravated Assault Aggravated Battery to Police Officer/Bodily Harm Criminal Damage to Property	Remand DHS	---
32	M	W	Fel	Aggravated Domestic Battery	Sentenced	---
35	M	W	Fel	Aggravated Domestic/Domestic Battery	\$50,000.00	10%
60	M	W	Fel	Aggravated DUI	\$100,000.00	10%
35	M	W	Fel	Aggravated DUI	\$150,000.00	10%
23	F	W	Fel	Aggravated DUI	Sentenced	---
48	M	W	Fel	Aggravated DUI	Sentenced	---
31	M	W	Fel	Aggravated DUI	Sentenced	---
29	M	B	Fel Fel	Aggravated DUI Driving with a Revoked License	Sentenced Sentenced	---
18	M	B	Fel	Aggravated Fleeing	\$50,000.00	10%
34	M	B	Fel ---	Armed Habitual Criminal Parole Hold	\$500,000.00 No Bond	10% ---
24	M	B	Fel ---	Armed Habitual Crim/Unlawful use of Weapon by a Felon/Poss CS/Dom Batt Parole Hold	\$100,000.00 No Bond	10% ---
25	M	W	Fel	Armed Robbery	\$50,000.00	10%
25	M	B	Fel	Armed Robbery	\$100,000.00	10%
19	M	B	Fel	Armed Robbery/Aggravated Robbery	\$200,000.00	10%
18	M	B	Fel	Armed Violence/Bank Robbery/Aggravated Battery	\$1,000,000.00	10%
27	M	B	Fel	Armed Violence / Possession of a Stolen Firearm / Unlawful Possession of a Weapon by a Felon / Deface Firearm / Delivery Cannabis / Resist Police Officer	\$150,000.00	10%
19	M	B	Fel Fel	Attempted Murder/Aggravated Battery w/Firearm / UUW Felon Prob Viol - Morgan Co Warrant	\$1,000,000.00 \$10,000.00	10% 10%
51	M	W	Fel	Attempted Residential Burglary	\$25,000.00	10%
30	M	B	Fel	Attempted Murder	\$500,000.00	10%
45	M	W	Mis	Battery	\$5,000.00	10%
24	M	B	Mis Mis Mis Traf	Battery Domestic Battery Domestic Battery DUS - Vermilion Co Warrant	\$3,000.00 \$4,000.00 \$5,000.00 \$3,000.00	10% 10% 10% 10%
29	M	B	Fel	Burglary/Possession of Weapon by a Felon/Theft/Agg Poss Stolen Firearm	\$250,000.00	10%
49	M	W	Fel	Burglary/Resist Peace Officer	\$5,000.00	10%
30	M	W	Fel	Burglary/Resist PO	\$2,500.00	10%
37	M	W	Civ Mis	Child Support Warrant Domestic Battery	\$2,500.00 \$5,000.00	FC 10%
31	M	W	Civ Fel	Child Support Warrant Possession of a Weapon by Felon	\$12,000.00 \$25,000.00	FC 10%
34	M	B	Fel	Crim Damage to Prop/DUS/Unlawful Possession of a Weapon by a Felon	No Bond	---
29	M	B	Fel	Crim Sexual Assault	\$250,000.00	10%

38	M	W	Fel	Crim Sexual Assault/Aggravated Criminal Sexual Abuse	\$100,000.00	10%
28	M	B	Fel	Criminal Sexual Abuse	\$47,000.00	10%
56	M	B	Fel	Criminal Trespass to Residence - Person Present	Sentenced	---
22	M	B	Fel	Deliver Controlled Substance/Domestic Battery/Aggravated Battery	\$50,000.00	10%
30	M	B	Fel	Delivery Cannabis	\$100,000.00	10%
			Civ	Child Support Warrant	\$2,500.00	10%
			---	Parole Hold	No Bond	---
57	M	B	Fel	Domestic Battery	\$40,000.00	10%
23	M	W	Fel	Domestic Battery with Priors	\$50,000.00	10%
36	M	B	Mis	Domestic Battery-Bodily Harm	\$5,000.00	10%
41	M	W	Mis	Domestic Battery-Bodily Harm	Sentenced	---
20	M	B	Fel	Domestic Battery/Aggravated Battery to a Senior Citizen Violation Order of Protection	New Charges	---
27	M	B	Fel	Domestic Battery/Battery with Priors/Battery/Resist Police Officer	\$25,000.00	10%
			Mis	Battery	\$2,000.00	10%
27	M	B	Mis	Domestic Battery	\$2,000.00	10%
32	M	B	Fel	Domestic Battery	\$25,000.00	10%
20	M	B	Fel	Domestic Battery	\$25,000.00	10%
42	M	W	Fel	Domestic Battery	\$25,000.00	10%
41	M	B	Fel	Domestic Battery	\$75,000.00	10%
33	M	W	Fel	Domestic Battery	\$100,000.00	10%
25	M	W	Mis	Domestic Battery	New Charge	---
36	M	B	Mis	Domestic Battery	New Charge	---
37	M	W	Mis	Domestic Battery	New Charge	---
50	M	B	Mis	Domestic Battery	New Charge	---
23	M	B	Mis	Domestic Battery	\$3,500.00	10%
			Fel	Armed Violence	\$100,000.00	10%
25	M	B	Mis ---	Domestic Battery Parole Hold	\$25,000.00 No Bond	10% ---
40	M	B	Fel ---	Domestic Battery Parole Hold	\$5,000.00 No Bond	10% ---
37	M	B	Fel	Domestic Battery	\$10,000.00	10%
			Fel	Retail Theft	\$10,000.00	10%
			Fel	Retail Theft	\$10,000.00	10%
24	F	B	Fel	Driving on Suspended License	Sentenced	---
28	M	B	Traf	Driving on Suspended License - Jackson Co Warrant	\$3,000.00	10%
			Fel	Murder/Unlawful Use of Weapon	\$1,000,000.00	10%
36	M	B	Fel	Driving with a Revoked License	Sentenced	---
27	M	B	Traf	Driving with a Suspended License	\$260.00	FC
52	M	W	Fel	DUI	Sentenced	---
43	M	B	Fel	DUI/DUI with Blood Alcohol Content >.08/No Driver's License	\$3,000.00	10%

42	M	B	Unk Fel Fel	Driving with a Revoked License - Chicago PD Warrant Driving with a Revoked (DUR) License Driving with a Revoked License - Iroquois County Warrant	\$50,000.00 Sentenced	10% --- ---
22	M	B	Fel	Escape/Theft	Sentenced	---
50	M	W	Fel	Fail to Register as Sex Offender	\$10,000.00	10%
23	M	B	Fel	Felon in Possession/Use of Weapon	\$75,000.00	10%
26	M	B	Traf Fel	Flee Elude Police Officer Unlawful Possession of Weapon by Felon/UL Poss Controlled Substance	\$1,000.00 \$500,000.00	10% 10%
27	F	B	Fel	Flee Elude PO/Criminal Damage to Property	Sentenced	---
24	M	B	Fel	Fugitive from Justice - Boone Co, MO - Robbery	\$150,000.00	10%
31	M	B	Fel Fel Fel Fel	Fugitive from Justice - Oakland Co, MI - Prob Viol Driving with a Revoked License DUR Robbery	No Bond Sentenced Sentenced Sentenced	---
30	M	B	Fel	Home Invasion/Agg Batt to PO/Unlawful Possession Wpn/Agg UUW/Dom Batt	\$200,000.00	10%
26	M	B	Fel	Interfere w/ Report of Domestic Battery	Sentenced	---
65	M	B	Fel Fel	Manufacture/Delivery of Controlled Substance/Possession Controlled Substance Delivery of Controlled Substance	\$25,000.00 \$100,000.00	10% 10%
26	M	B	Fel Fel	Man/Del Controlled Substance/Poss w Int Del/Possession Weapon by Felon Man/Del Controlled Substance	\$750,000.00 \$250,000.00	10% 10%
37	M	B	Fel	Man/Del Controlled Substance/Unlawful Use of Weapon	\$500,000.00	10%
25	M	B	Fel Fel	Manufacture/Delivery of Cocaine Man/Del of Cocaine - Cook Co Warrant	\$75,000.00 No Bond	10% ---
37	M	H	Fel	Manufacture of Ecstasy 200>600 Pills	\$500,000.00	10%
42	M	B	Fel Fel	Motor Vehicle Theft Burglary	\$25,000.00 \$50,000.00	10% 10%
23	M	B	Fel	Murder	\$2,000,000.00	10%
31	M	W	Fel	Murder	\$10,000,000.00	10%
38	M	B	Fel	Murder	No Bond	---
25	M	B	Fel ---	Murder Parole Hold	\$5,000,000.00 No Bond	10% ---
23	M	B	Traf Fel	No Driver's License Unlawful Use of Weapon by Felon	\$3,000.00 \$150,000.00	10% 10%
21	F	B	Fel Fel	Possession of a Controlled Substance Possession of Look-a-like Substance	New Charge	---
37	M	NA	Fel ---	Possession of Meth / Man Del Cannabis/Poss Cann/Resist PO Parole Hold	\$11,960.00 No Bond	FC ---
20	M	W	Fel	Possession Stolen Motor Vehicle/DUI/Fail to Notify Damage	\$10,000.00	10%
55	M	W	Fel	Possession Stolen Vehicle	\$75,000.00	10%
30	M	W	Fel Fel Fel	Possession Stolen Vehicle Possession Stolen Vehicle Theft-Control Intent with Prior	\$200,000.00 \$75,000.00 \$19,910.00	10% 10% FC

22	M	B	Fel Fel	Possession Stolen Vehicle - Iroquois Co Warrant Theft of Motor Vehicle	\$10,000.00 \$5,000.00	10% 10%
33	M	B	Fel Fel	Possession w Intent to Del/Unlawful Possession Weapon by Felon Man/Del Controlled Substance / Man/Del I<15gr Cocaine	\$500,000.00 \$240.00	10% FC
49	M	H	Fel	Poss/Del Meth/Poss Meth/Poss CS/Del Cann/Poss Weapon by Felon	\$1,000,000.00	10%
25	M	W	Fel	Possession of a Stolen Vehicle	\$10,000.00	10%
20	M	B	Fel	Possession of Weapon by Felon/Poss FA no FOID/Agg UUW	\$15,000.00	10%
32	M	H	Fel Traf	Predatory Criminal Sexual Assault Leaving Scene - McLean Co Warrant	\$250,000.00 \$1,000.00	10% 10%
54	M	B	Fel	Predatory Criminal Sexual Assault, Victim <13	\$500,000.00	10%
53	M	B	Fel Fel	Predatory Criminal Sexual Assault/Crim Sex Assault Petition to Revoke-Burglary	\$100,000.00 \$3,000.00	10% 10%
35	M	B	Fel	Predatory Criminal Sexual Assault, Victim <13	\$250,000.00	10%
43	M	B	Fel	Predatory Criminal Sexual Assault, Victim <13	\$250,000.00	10%
49	M	B	Fel	Predatory Criminal Sexual Assault, Victim <13	\$400,000.00	10%
33	M	B	Fel	Probation Violation - Attempted Criminal Sexual Assault	\$100,000.00	10%
33	M	W	Fel	Probation Violation - Driving While Revoked	Sentenced	---
51	M	W	Fel	Probation Violation - Aggravated DUI/No Valid Driver's License	Remand DHS	---
40	M	W	Fel	Probation Violation - Driving While Revoked	\$14,690.00	FC
41	M	W	Fel Fel	Probation Violation - Theft Probation Violation - Residential Burglary	\$19,100.00 \$200,000.00	FC 10%
36	M	B	Fel	Residential Burglary	\$25,000.00	10%
26	M	W	Fel Fel	Residential Burglary/UL Possession Controlled Substance/Crim Tres Residence Residential Burglary/Theft	\$25,000.00 \$15,000.00	10% 10%
42	M	W	Fel Civ Fel Mis Mis Fel Mis	Residential Burglary/Unlawful Possession of a Stolen Vehicle Child Support Warrant Burglary - Effingham Co Warrant Violation of Order of Protection Violation of Order of Protection Residential Burglary Criminal Damage to Property	\$75,000.00 \$70,000.00 \$30,000.00 \$25,000.00 \$25,000.00 \$75,000.00 \$670.00	10% 10% 10% 10% 10% 10% FC
33	F	B	Fel Fel Fel	Residential Burglary/Credit Card Fraud/Burglary to Motor Vehicle/ID Theft Probation Violation-Possession of Stolen Vehicle Probation Violation-Theft	\$10,000.00 \$5,000.00 \$5,000.00	10% 10% 10%
53	M	B	Fel	Residential Burglary	\$50,000.00	10%
34	M	B	Fel	Residential Burglary	\$100,000.00	10%
32	F	B	Fel	Resist Police Officer	\$10,000.00	10%
54	M	B	Fel	Retail Theft	\$9,160.00	FC
22	F	B	Fel	Robbery	\$50,000.00	10%
27	M	B	Fel	Robbery/Theft/Domestic Battery	\$25,000.00	10%
26	M	B	Mis	Theft	\$190.00	FC
43	M	B	Fel	Theft	Sentenced	---



37	F	B	Fel Mis	Theft Criminal Trespass to Land	\$5,000.00 \$3,000.00	10% 10%
39	M	B	Fel	Theft over \$500	\$75,000.00	10%
40	F	W	Fel	Theft w/ priors	\$9,070.00	FC
35	M	B	Fel	Threaten Public Official	Sentenced	---
38	M	B	Fel Fel	Threaten Public Official Man/Del Controlled Substance/Aggravated Battery	\$15,000.00 \$50,000.00	10% 10%
28	M	W	Fel ---	Unlawful Possession Weapon by a Felon/Agg Flee Elude PO/DUR Parole Hold	\$150,000.00 No Bond	10% ---
25	M	B	Fel	Unlawful Possession of a Weapon by Felon	\$50,000.00	10%
31	M	B	Fel	Unlawful Restraint/Domestic Battery	\$50,000.00	10%
52	M	B	Fel	Unlawful Poss CS/Delivery Controlled Substance/Poss Firearm w/ no FOID	\$100,000.00	10%
21	M	B	Fel	Unlawful Possession of Weapon by Felon	\$250,000.00	10%
52	M	B	Fel	Unlawful Possession with Intent to deliver controlled substance	\$50,000.00	10%
23	M	B	Fel	Unlawful Restraint	Sentenced	---
59	M	B	Fel Mis	Unlawful Restraint/Aggravated Assault Criminal Damage to Property	\$15,000.00 \$10,000.00	10% 10%
19	M	B	Fel Fel	Unlawful Use of Weapon Murder	\$30,000.00 \$1,000,000.00	10% 10%
22	M	B	Mis	Violation Order of Protection	\$30,000.00	10%
58	M	W	Mis	Violation Order of Protection	\$1,140.00	FC
31	M	B	Fel Fel	Violation Order of Protection Criminal Damage to State Prop/Resist	\$50,000.00 \$540.00	10% FC
25	M	B	Fel Fel ---	Violation Order Protection Aggravated Domestic Battery/Criminal Sexual Assault Parole Hold	\$75,000.00 \$100,000.00 No Bond	10% 10% ---

## Electronic Home Detention (EHD)

Some offenders who are sentenced by the court can participate in our EHD program. This program is for nonviolent offenders and allows the offender to still work in the community while serving their sentence at home. Coordinated by Officer Kevin McCallister, the location of offenders in this program is electronically monitored and participants are held accountable for strict guidelines, including random checks by Sheriff's Office staff. If found to be in noncompliance with the established, agreed upon rules of the program, the offender will spend their remaining sentence in the jail.

The average number of EHD clients per month in 2019 was 32.

## Corrections Programs

The philosophy of Champaign County Corrections is that programs should be offered for inmates who want to leave jail in a better state than when they came to jail. In 2019, the number of programs offered to inmates increased from 22 to 28, with plans for adding more. However due to a lack of space, volunteer schedules, and classification issues, program offerings are limited.

### MEN'S PROGRAMS

- Christian Church Services
- Christian Bible Study
- GED
- Anger Management
- Movie Critic Class/Discussion
- Bilingual Bible Study
- Mindfulness Training
- GROW (*Mental Health & Wellness Support Group*)
- Alcoholics Anonymous
- Narcotics Anonymous
- Celebrate Recovery (*faith-based addiction recovery*)
- Individual Bible Study
- Moral Reconation Therapy
- Muslim Prayer Session
- The Power of Man (*religion-based transformational session*)
- Parenting Class
- Money Management Course

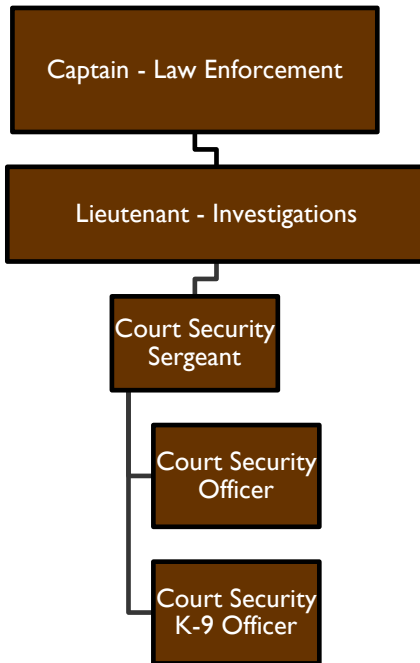
### WOMEN'S PROGRAMS

- Movie Critic Class/Discussion
- Alcoholics Anonymous
- Christian Church Services
- The Art of the Kingdom (*religion-based art project*)
- Christian Recovery Program
- Narcotics Anonymous
- Parenting Class
- Zentangle Art Class

### POTENTIAL FUTURE PROGRAMS

- Food & Nutrition
- New Jail Ministry
- Muslim Class
- Motivational Interviewing
- Barber
- Business class
- Writing class

# COURT SECURITY DIVISION

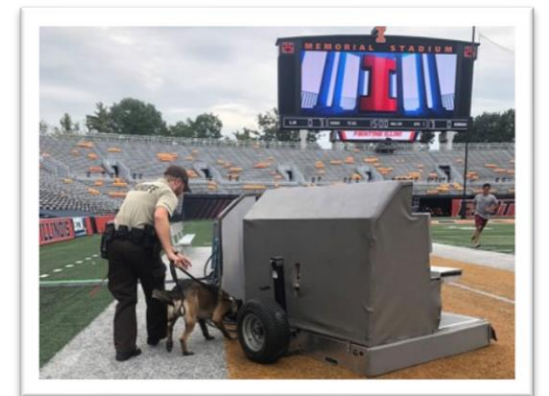


Under the leadership of Lt. Curt Apperson and Sgt. Michelle Mennenga, the Court Security Division is responsible for maintaining a safe courthouse.

By law, the Sheriff is required either to attend or have a representative present in every county court proceeding that occurs in Champaign County.

There are thirteen Court Security Officers covering eleven courtrooms and the screening area at the front

doors of the courthouse. Court Security also includes an explosives K-9 which can frequently be seen patrolling the inside and outside of the building. As one of only two explosives detection K-9s in the area, our K-9 also assists neighboring departments helping to ensure special events are safe.



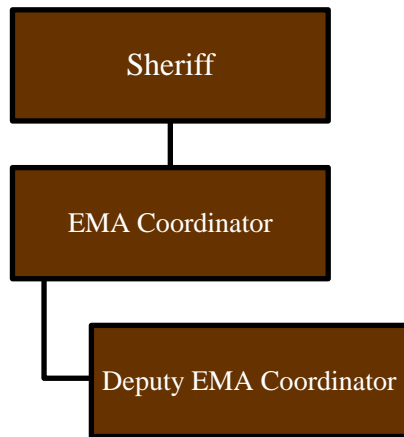
## Personnel Changes

In 2019, Court Security had several personnel changes. Congratulations to CSO Feeney for his retirement and to CSO Mennenga for her promotion to Court Security Sergeant.



Sheriff Heuerman also swore in four new Court Security Officers – two who transferred from Corrections and two who were new to the Sheriff's Office.

# EMERGENCY MANAGEMENT AGENCY



In Champaign County, the Champaign County Emergency Management Agency (EMA) falls under the leadership of the Sheriff. EMA has two full time employees.

One of the major functions of EMA is to coordinate with municipalities in Champaign



County for emergency/disaster preparedness. EMA also works closely with the local hospitals and other healthcare facilities to help them prepare for emergencies.

Champaign County EMA has a mobile command center that can be on location of an emergency or disaster in a short amount of time and helps support a coordinated response. EMA also maintains one of the two Emergency Operations Centers in Champaign County, which is activated during times of disaster or emergency.



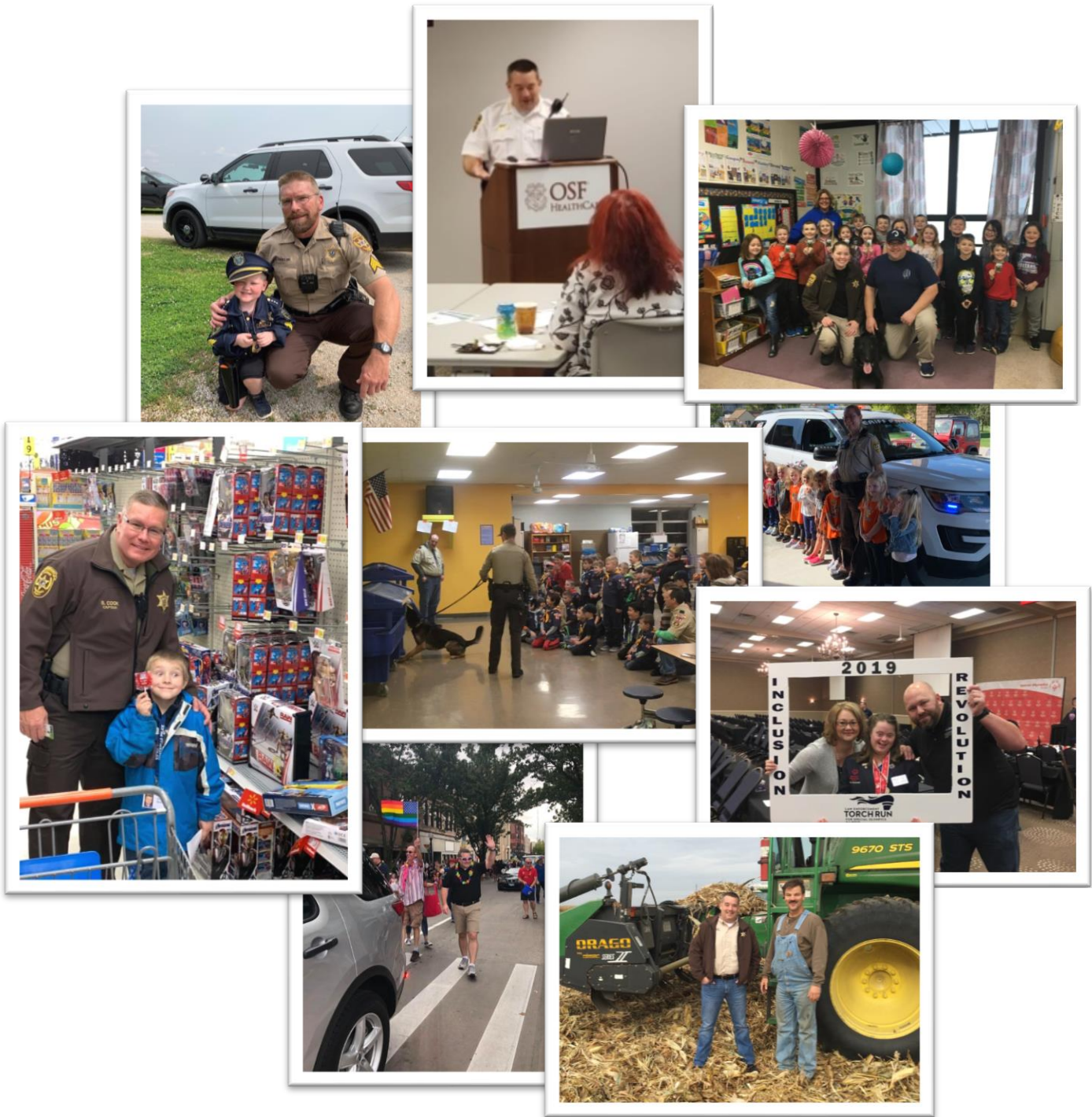
Highlights from EMA in 2019 include:

- Handing out 28 weather alert radios;
- Training 105 new weather spotters;
- Facilitating 31 emergency preparedness exercises;
- Coordinating 30 community events to ensure “weather safety” for the event.
- Responding to 3 search and rescue calls staffed by volunteers.



# COMMUNITY ENGAGEMENT

The Sheriff's Office takes a lot of pride in its community engagement. While making traffic stops and criminal arrests is necessary, a lot of emphasis is also put on making a positive impact in Champaign County through non-enforcement means. Some examples might include show-and-tell at a local school, a "ride-along" with a local farmer to get a new perspective on things, showing support for the diversity of Champaign County by walking in a parade and giving public presentation.



## GOALS FOR THE FUTURE

As we look forward to 2020, the Sheriff's Office has several goals. While impossible to highlight all of them here, below are a few things we will work on in 2020:

- Increase recruitment of diverse employees;
- Work on community alternatives to incarceration for those who might be better served outside of jail;
- Plan for consolidation into one facility that allows us to adequately meet the needs of our special management inmates;
- Reduce the number of accidents on Champaign County roadways;
- Increase community policing in rural areas of the County;
- Increase employee training;
- Increase community engagement and collaboration.

LEARNING FROM THE PAST,  
CHANGING FOR THE FUTURE.