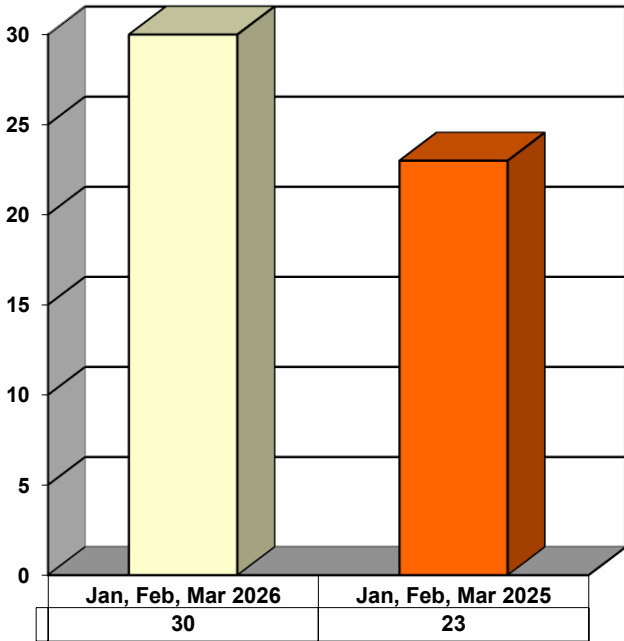
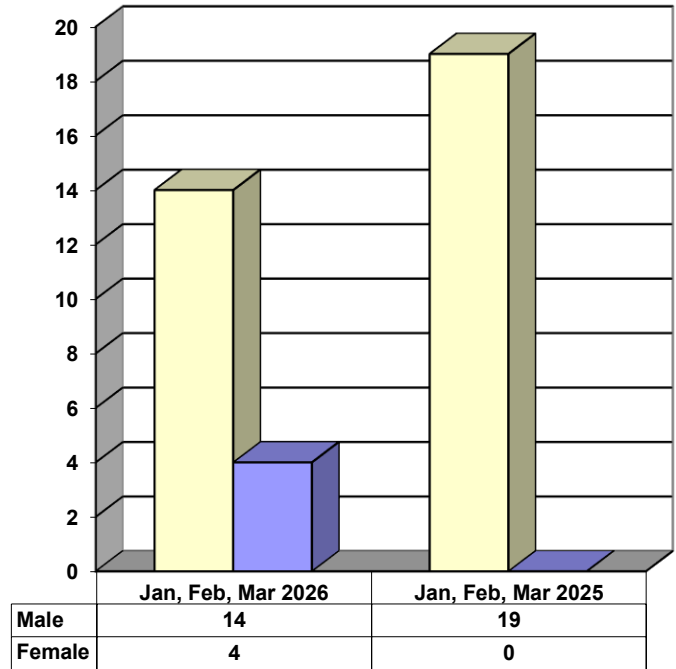


JUVENILE SUPERVISION INFORMATION
MONTHS OF JANUARY, FEBRUARY, AND MARCH 2026
 (Compared to Prior Year)

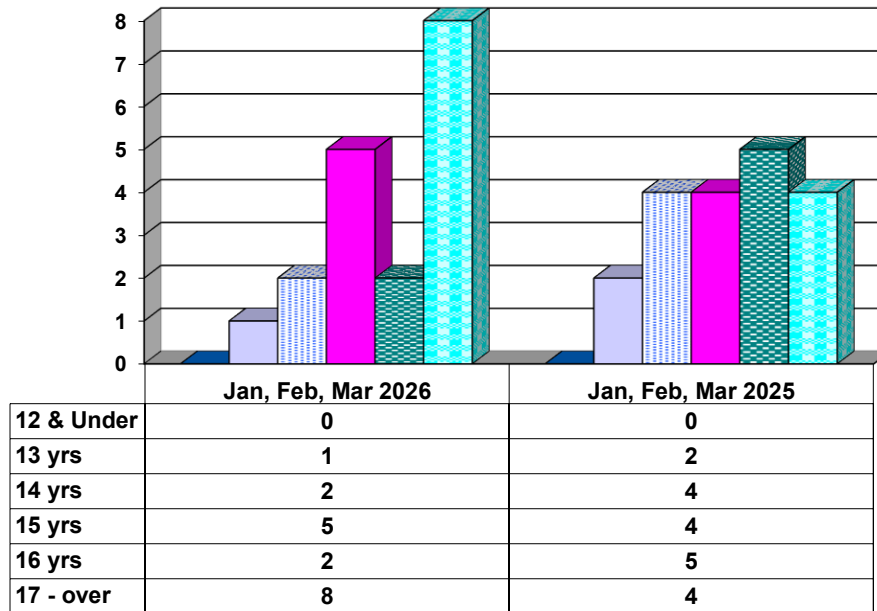
Juvenile Delinquency Petitions Filed



Gender Demographics for Juvenile Admissions

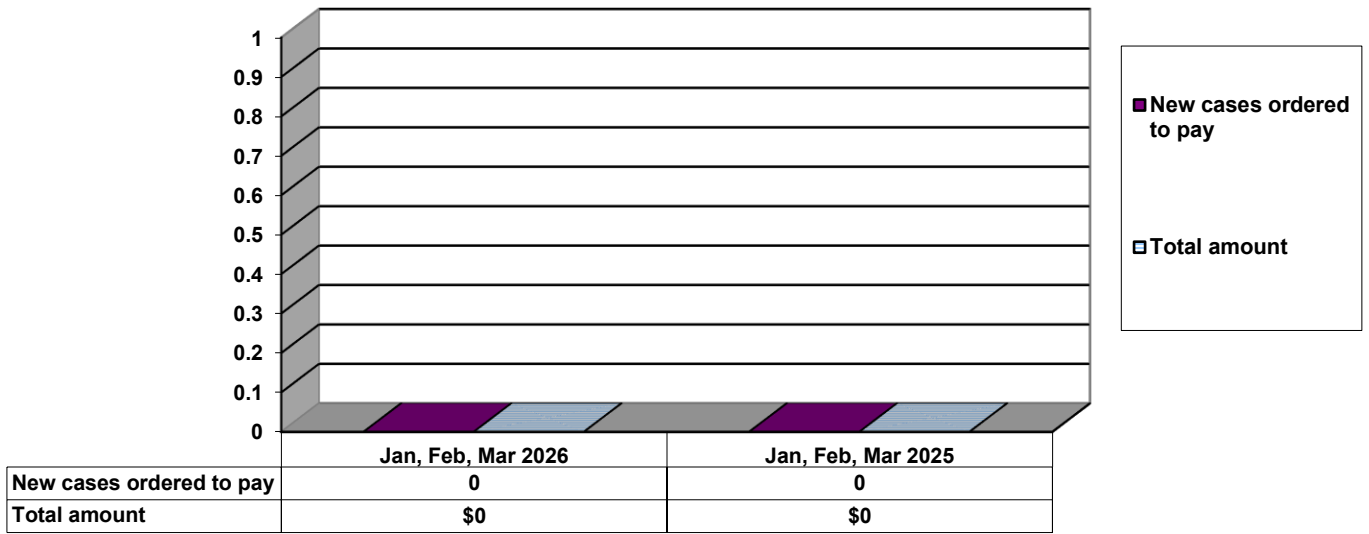


Age Demographics for Juvenile Admissions

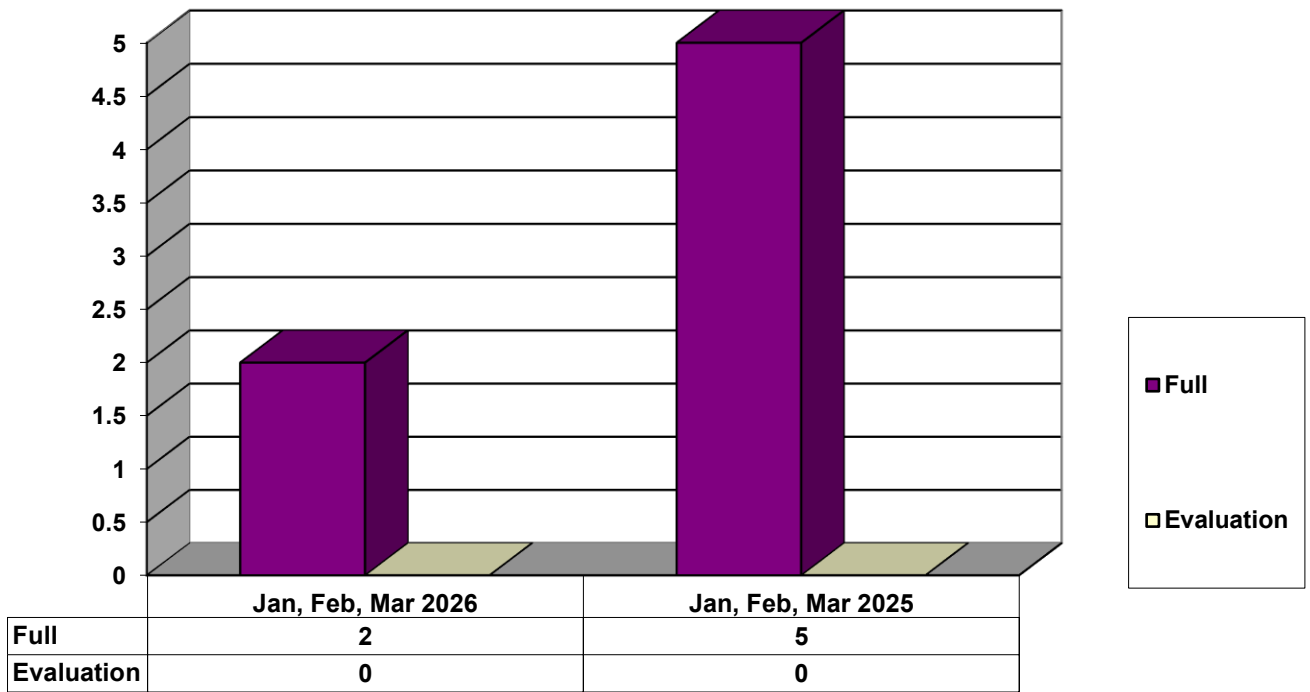


12 & Under
 13 yrs
 14 yrs
 15 yrs
 16 yrs
 17 - over

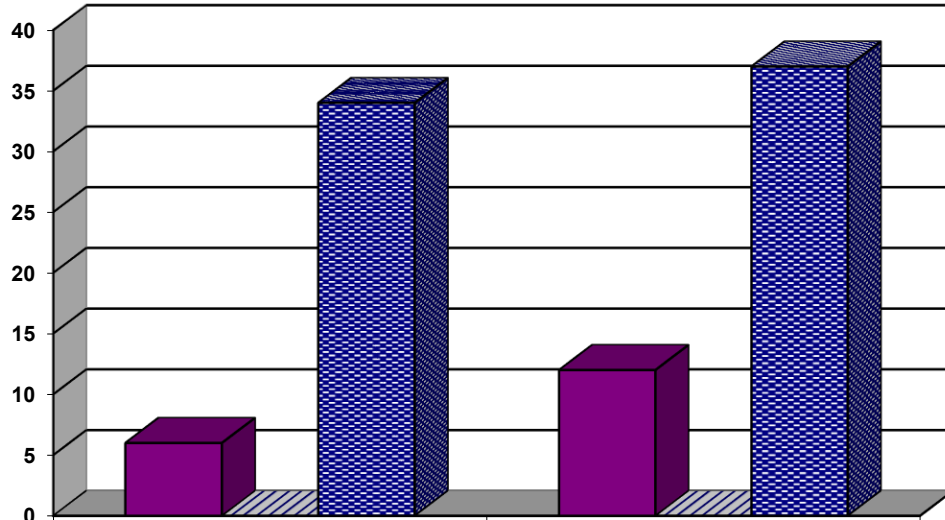
Restitution Ordered in New Juvenile Cases



Commitments to Illinois Department of Juvenile Justice



Investigations Completed by Juvenile Division



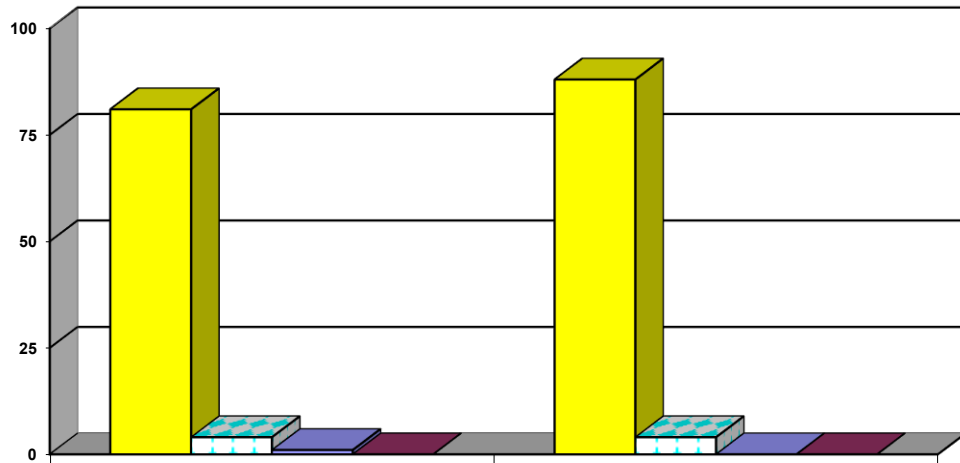
	Jan, Feb, Mar 2026	Jan, Feb, Mar 2025
Social Histories	6	12
Supplemental Social History	0	0
Remission/Review	34	37

■ Social Histories

▨ Supplemental Social History

■ Remission/Review

Juvenile Caseload at End of Reporting Periods



	March 2026	March 2025
Probation	81	88
Continued under Supervision	4	4
Informal	1	0
Other	0	0

■ Probation

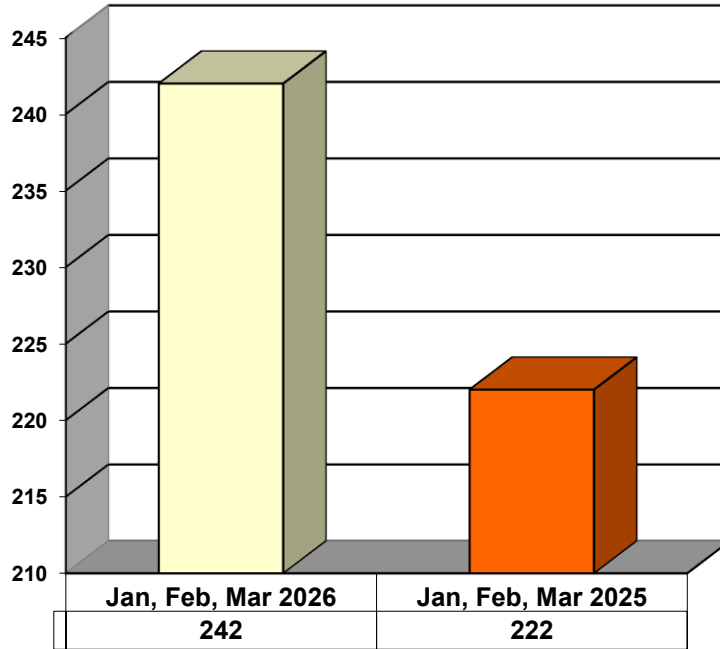
▨ Continued under Supervision

■ Informal

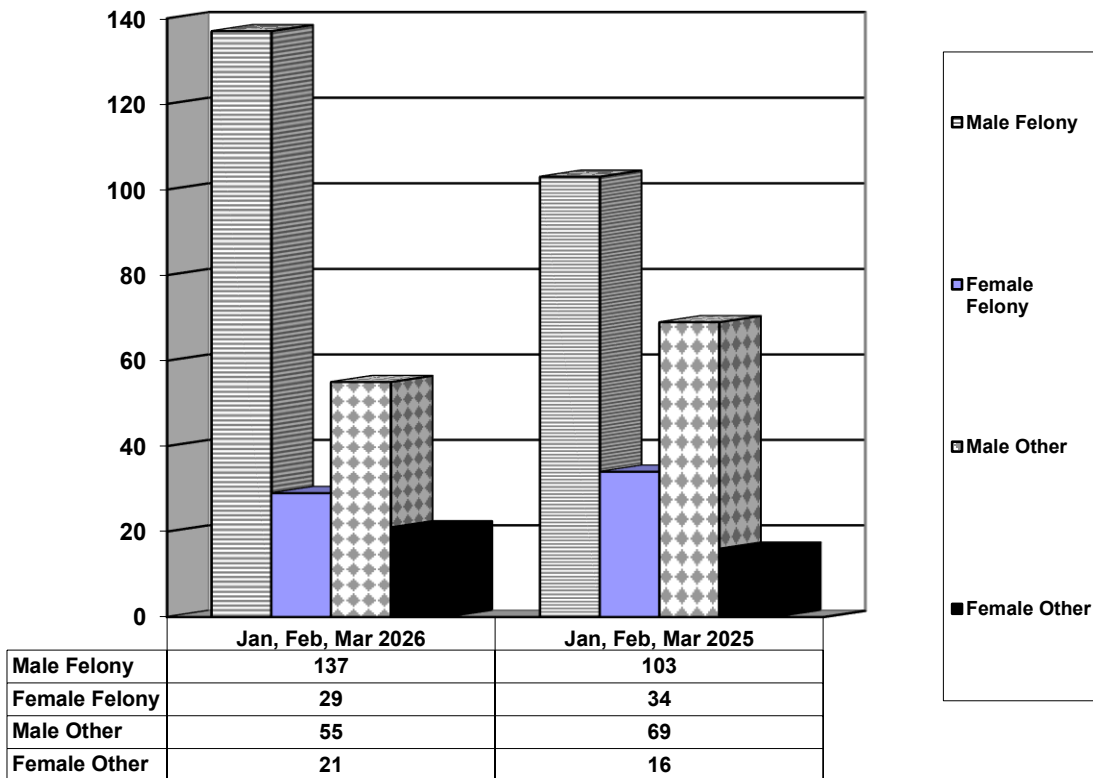
■ Other

**ADULT SUPERVISION INFORMATION
MONTHS OF JANUARY, FEBRUARY, AND MARCH 2026
(Compared to Prior Year)**

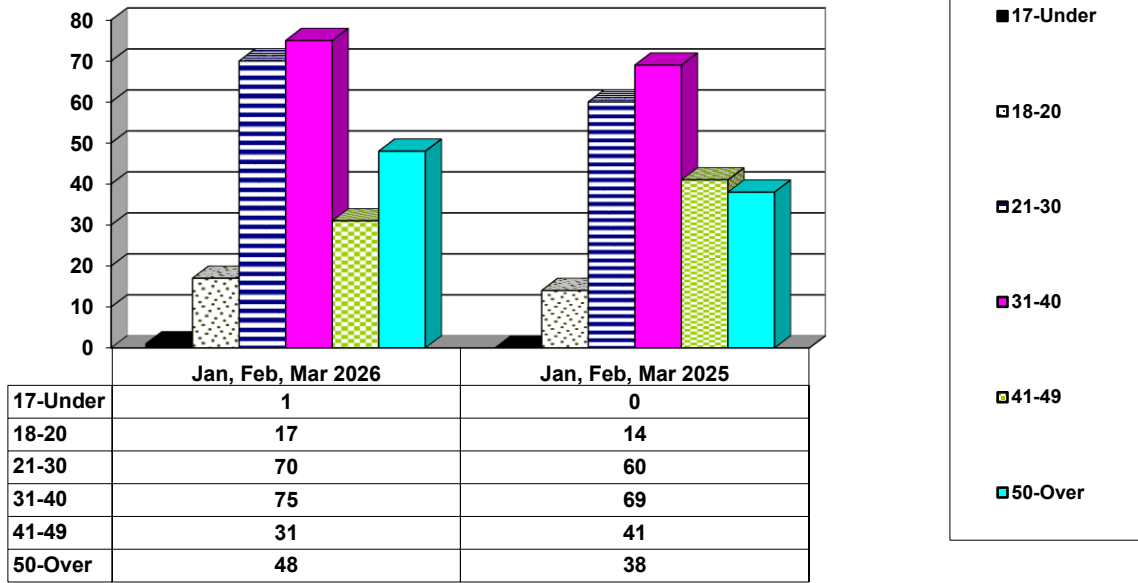
Adult Intakes Completed



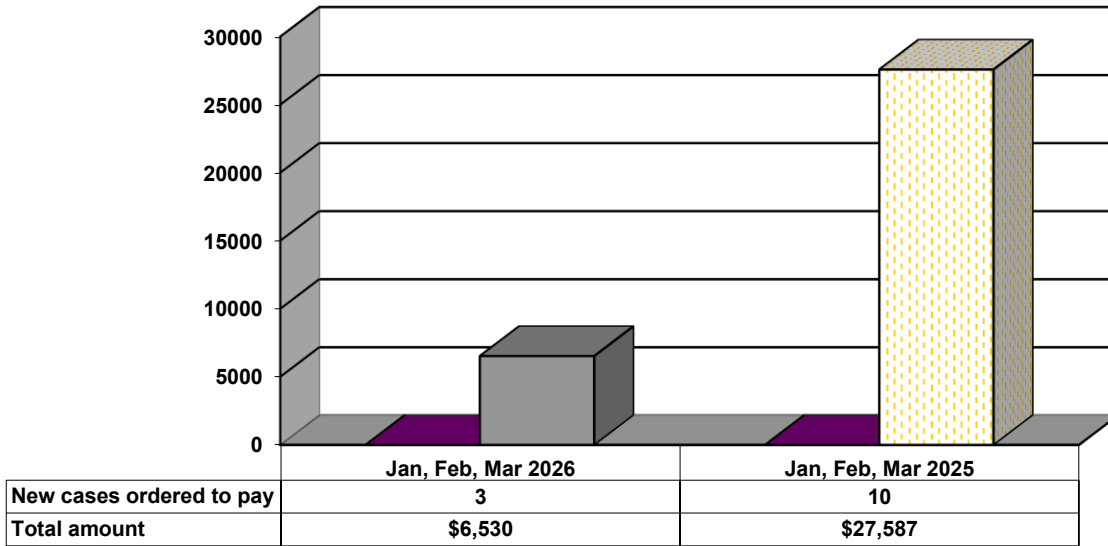
Gender Demographics for Adult Intakes



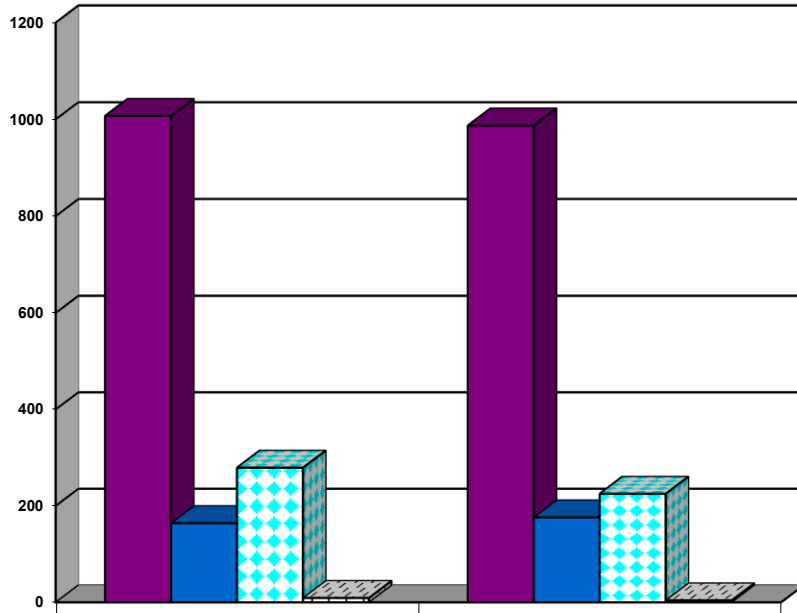
Age Demographics for Adult Intakes



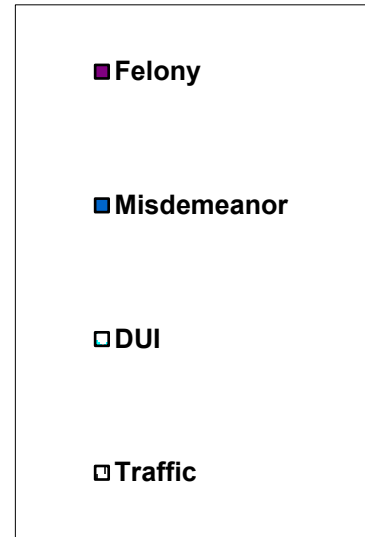
Restitution Ordered in New Adult Cases



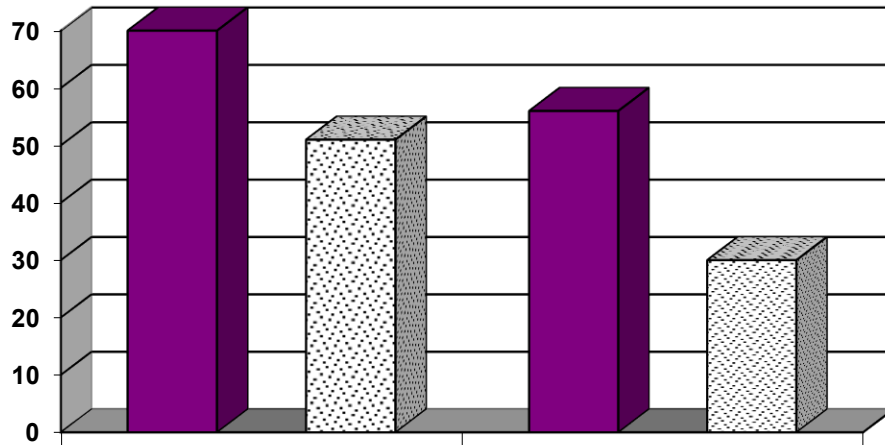
Breakdown of Adult Caseload at End of Reporting Periods



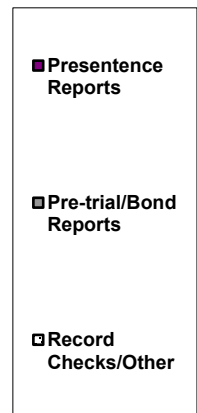
	March 2026	March 2025
Felony	1007	987
Misdemeanor	164	176
DUI	279	225
Traffic	9	4



Adult Investigations Completed



	Jan, Feb, Mar 2026	Jan, Feb, Mar 2025
Presentence Reports	70	56
Pre-trial/Bond Reports	0	0
Record Checks/Other	51	30



Commitments to Illinois Department of Corrections

